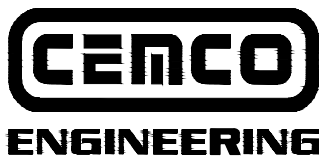


NON-LOAD BEARING WALL SYSTEMS

DET.NO	DETAIL NAME	DETAIL DESCRIPTION
1	Deflection Track Assembly	Single Track With Double Flat Strap
1A	Deflection Track Assembly	CEMCO FAS Track DL2 With Double Flat Strap
2	Deflection Track Assembly	Single Track With Cold-Rolled Channel (CRC) and Clip Angle
2A	Deflection Track Assembly	CEMCO FAS Track DL2 With Cold-Rolled Channel (CRC) and Clip Angle
3	Deflection Track Assembly	Double Deflection Track
3A	Deflection Track Assembly	Double Deflection Track With CEMCO FAS Track DL2
4	Deflection Track Assembly	Single CEMCO Slotted Track (CST)
4A	Deflection Track Assembly	CEMCO FAS Track DL
5	Wall Deflection	CEMCO DEFLEX Vertical Slide Clip
6	Bridging	Single Flat Strap With Blocking
7	Bridging	Double Flat Strap With Blocking
8	Bridging	Cold-Rolled Channel (CRC) With Clip Angle
9	Window Non-Load Bearing	Single Track Header and Sill, Single Jamb Stud
10	Window Non-Load Bearing	Single Track Header and Sill, Boxed Jamb Stud
11	Window Non-Load Bearing	Single Track Header and Sill, Back-to-Back Jamb Stud
12	Door Non-Load Bearing	Single Track Header and Single Jamb Stud
13	Door Non-Load Bearing	Single Track Header and Boxed Jamb Stud
14	Door Non-Load Bearing	Single Track Header and Back-to-Back Jamb Stud
15	Non-Load Bearing Wall	Interior Wall Framed Above Ceiling With Diagonal Brace
16	Non-Load Bearing Wall	Interior Wall Framed to Ceiling With Diagonal Brace

NON-LOAD BEARING WALL SYSTEMS, DETAIL NUMBER AND DETAIL DESCRIPTION



1001-A PITTSBURG ANTIOCH HWY
PITTSBURG, CA 94565
ENG. DEPT. 925.473-9340
FAX 925.473.9124
www.cemcosteel.com

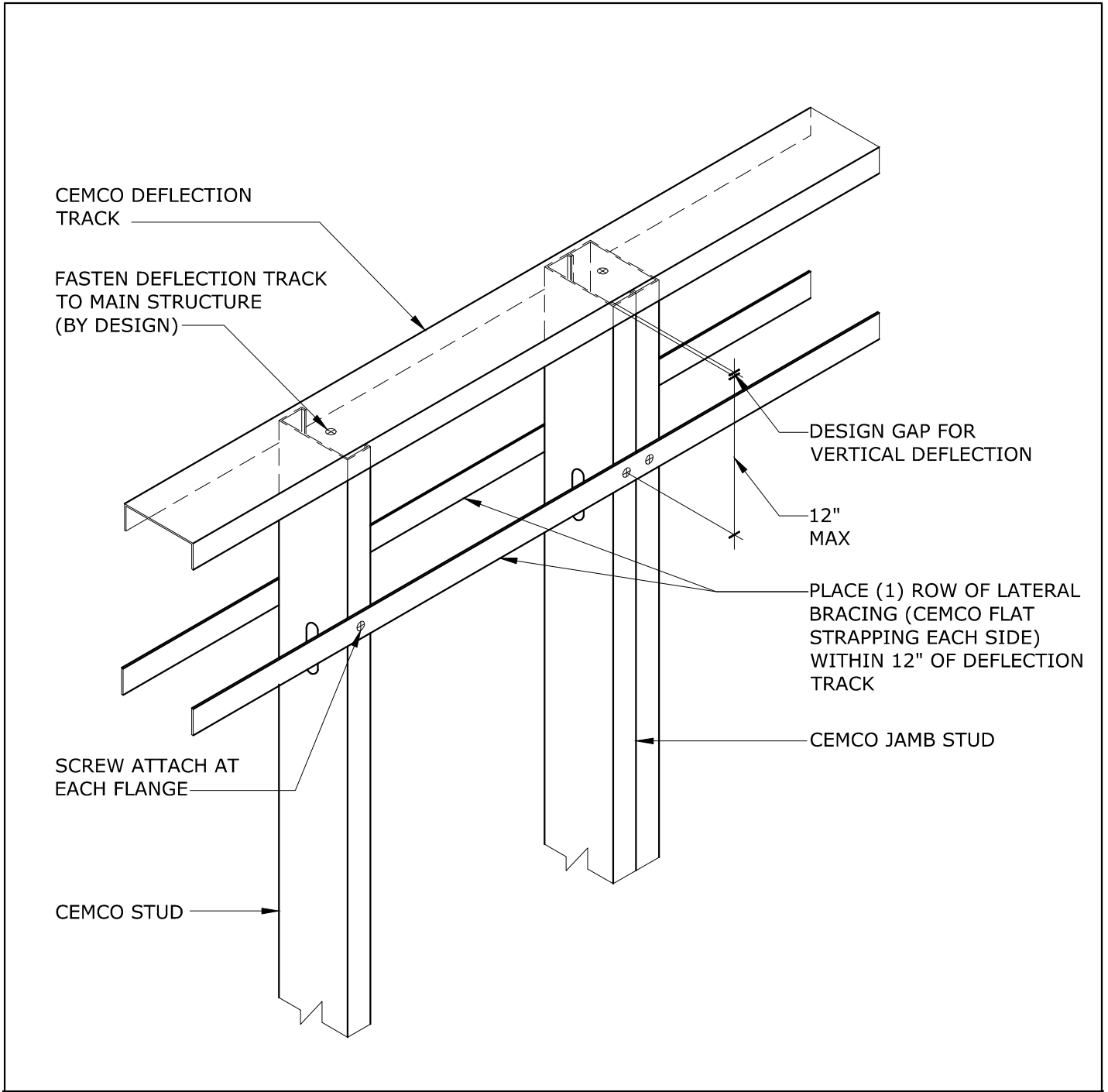
DISCLAIMER:

CEMCO assumes no liability for failure resulting from the use of it's drawings, or for failure resulting from the use of alternate materials, or improper application or installation. This drawing is supplied solely to assist in the selection and application of CEMCO products. This drawing is generic in nature and should not be used in design or construction without an independent evaluation by a qualified Architect or Engineer of Record.


CATEGORY:

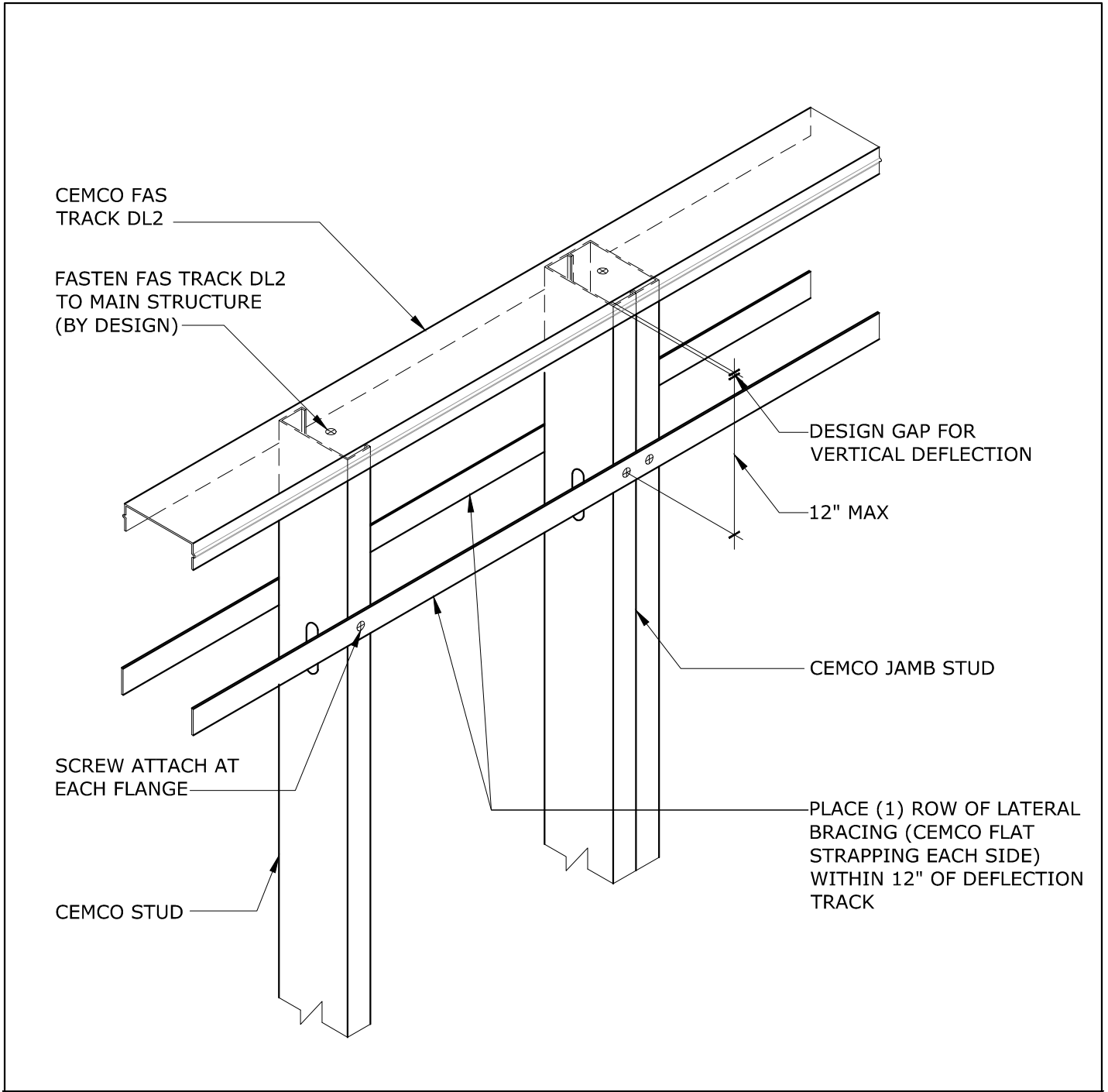
**NON-LOAD
BEARING WALL
DETAILS**

REV: 0
RELEASE: 12/12/2011



1 DEFLECTION TRACK ASSEMBLY - SINGLE TRACK WITH DOUBLE FLAT STRAP SCALE: N.T.S.

 <p>CEMCO ENGINEERING 1001-A PITTSBURG ANTIOCH HWY PITTSBURG, CA 94565 ENG. DEPT. 925.473-9340 FAX 925.473.9124 www.cemcosteel.com</p>	<p>DISCLAIMER:</p> <p>CEMCO assumes no liability for failure resulting from the use of it's drawings, or for failure resulting from the use of alternate materials, or improper application or installation. This drawing is supplied solely to assist in the selection and application of CEMCO products. This drawing is generic in nature and should not be used in design or construction without an independent evaluation by a qualified Architect or Engineer of Record.</p>	<p>CATEGORY:</p> <p>NON-LOAD BEARING WALL DETAILS</p>
	<p>REV: 0 RELEASE: 12/12/2011</p>	



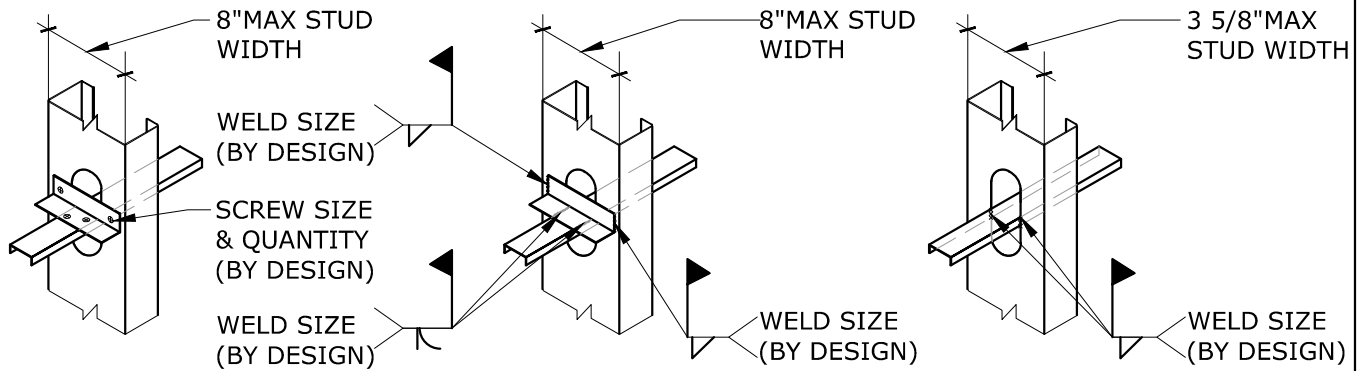
1A DEFLECTION TRACK ASSEMBLY - FAS TRACK DL2 WITH DOUBLE FLAT STRAP SCALE: N.T.S.

CEMCO ENGINEERING
 1001-A PITTSBURG ANTIOCH HWY
 PITTSBURG, CA 94565
 ENG. DEPT. 925.473-9340
 FAX 925.473.9124
 www.cemcosteel.com

DISCLAIMER:
 CEMCO assumes no liability for failure resulting from the use of it's drawings, or for failure resulting from the use of alternate materials, or improper application or installation. This drawing is supplied solely to assist in the selection and application of CEMCO products. This drawing is generic in nature and should not be used in design or construction without an independent evaluation by a qualified Architect or Engineer of Record.

CATEGORY:
NON-LOAD BEARING WALL DETAILS

REV: 0
 RELEASE: 12/12/2011

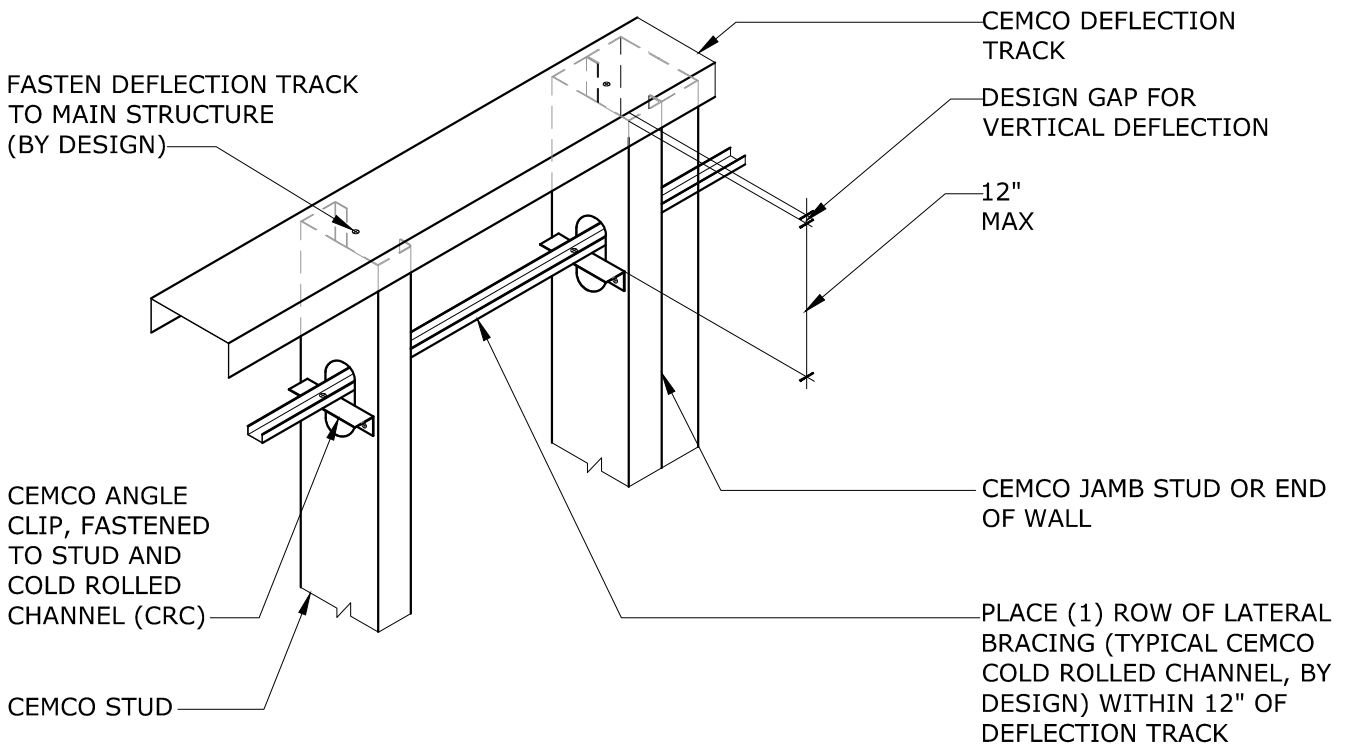


OPTION 1:
SCREWED ATTACHMENT
OF LATERAL BRACING

OPTION 2:
WELDED ATTACHMENT
OF LATERAL BRACING

OPTION 3:
WELDED ATTACHMENT
OF LATERAL BRACING

BRACING ATTACHMENTS



2 DEFLECTION TRACK ASSEMBLY - SINGLE TRACK WITH COLD-ROLLED CHANNEL SCALE: N.T.S.



CEMCO ENGINEERING
1001-A PITTSBURG ANTIOCH HWY
PITTSBURG, CA 94565
ENG. DEPT. 925.473-9340
FAX 925.473.9124
www.cemcosteel.com

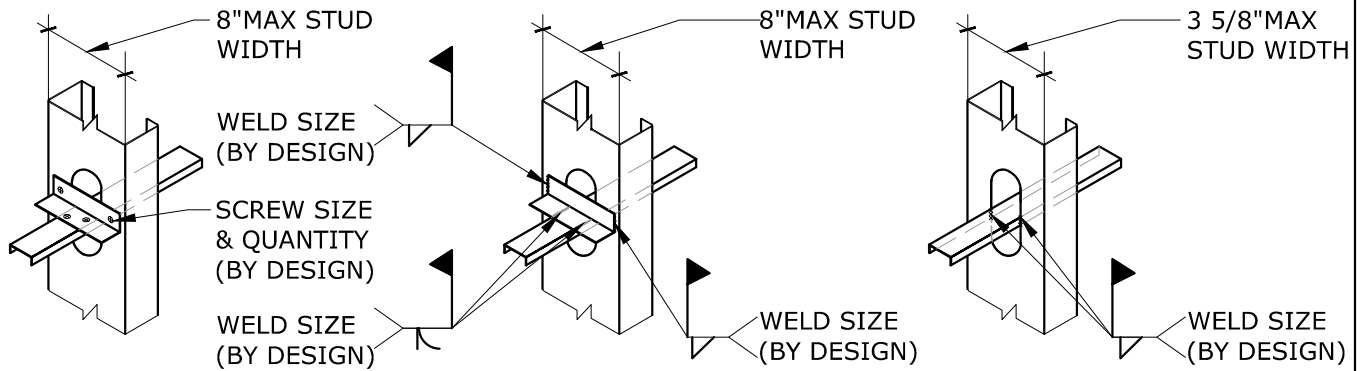
DISCLAIMER:

CEMCO assumes no liability for failure resulting from the use of it's drawings, or for failure resulting from the use of alternate materials, or improper application or installation. This drawing is supplied solely to assist in the selection and application of CEMCO products. This drawing is generic in nature and should not be used in design or construction without an independent evaluation by a qualified Architect or Engineer of Record.

CATEGORY:

NON-LOAD BEARING WALL DETAILS

REV: 0
RELEASE: 12/12/2011

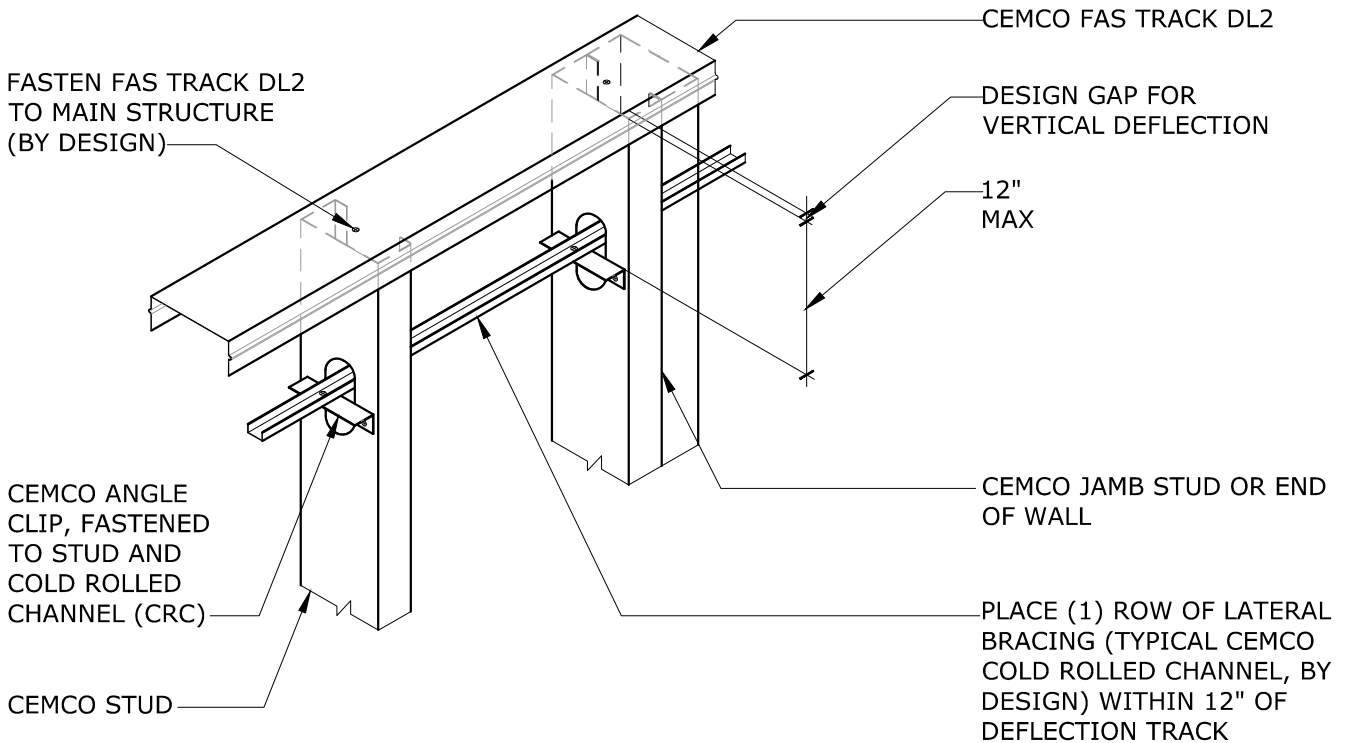


OPTION 1:
SCREWED ATTACHMENT
OF LATERAL BRACING

OPTION 2:
WELDED ATTACHMENT
OF LATERAL BRACING

OPTION 3:
WELDED ATTACHMENT
OF LATERAL BRACING

BRACING ATTACHMENTS



2A DEFLECTION TRACK ASSEMBLY - FAS TRACK DL2 WITH COLD-ROLLED CHANNEL SCALE: N.T.S.



1001-A PITTSBURG ANTIOCH HWY
PITTSBURG, CA 94565
ENG. DEPT. 925.473-9340
FAX 925.473.9124
www.cemcosteel.com

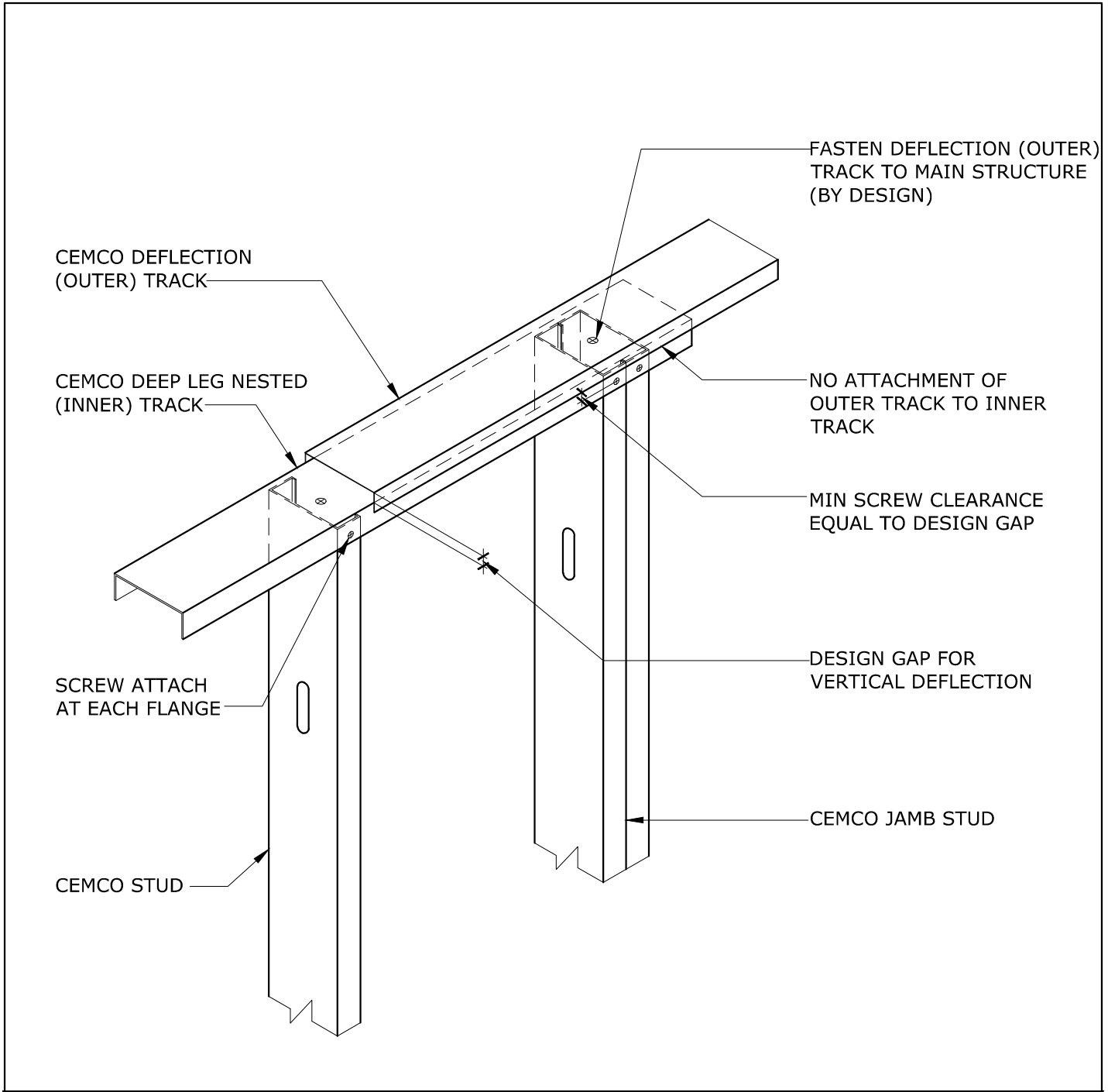
DISCLAIMER:

CEMCO assumes no liability for failure resulting from the use of it's drawings, or for failure resulting from the use of alternate materials, or improper application or installation. This drawing is supplied solely to assist in the selection and application of CEMCO products. This drawing is generic in nature and should not be used in design or construction without an independent evaluation by a qualified Architect or Engineer of Record.


CATEGORY:

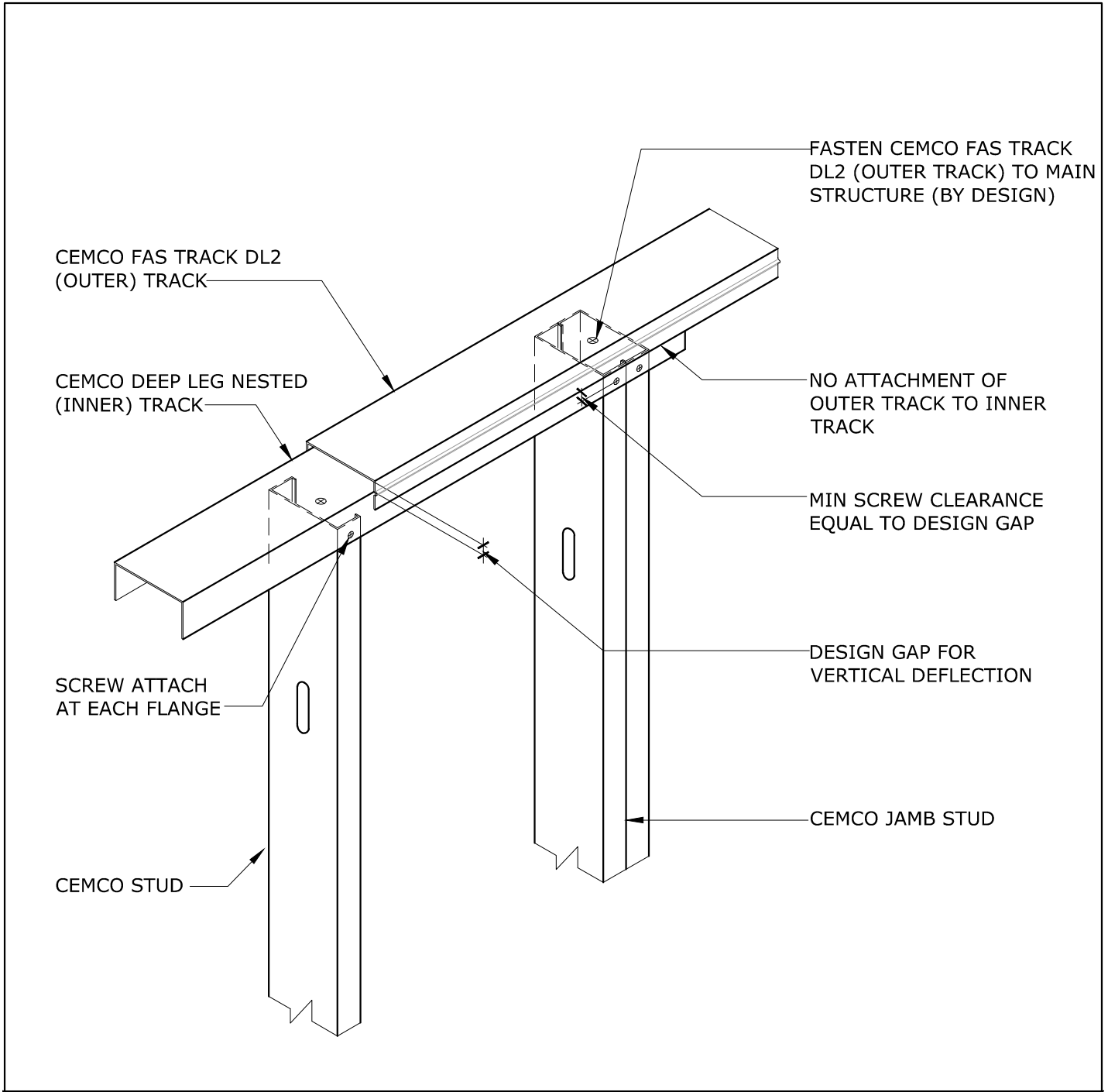
NON-LOAD BEARING WALL DETAILS

REV: 0
RELEASE: 12/12/2011




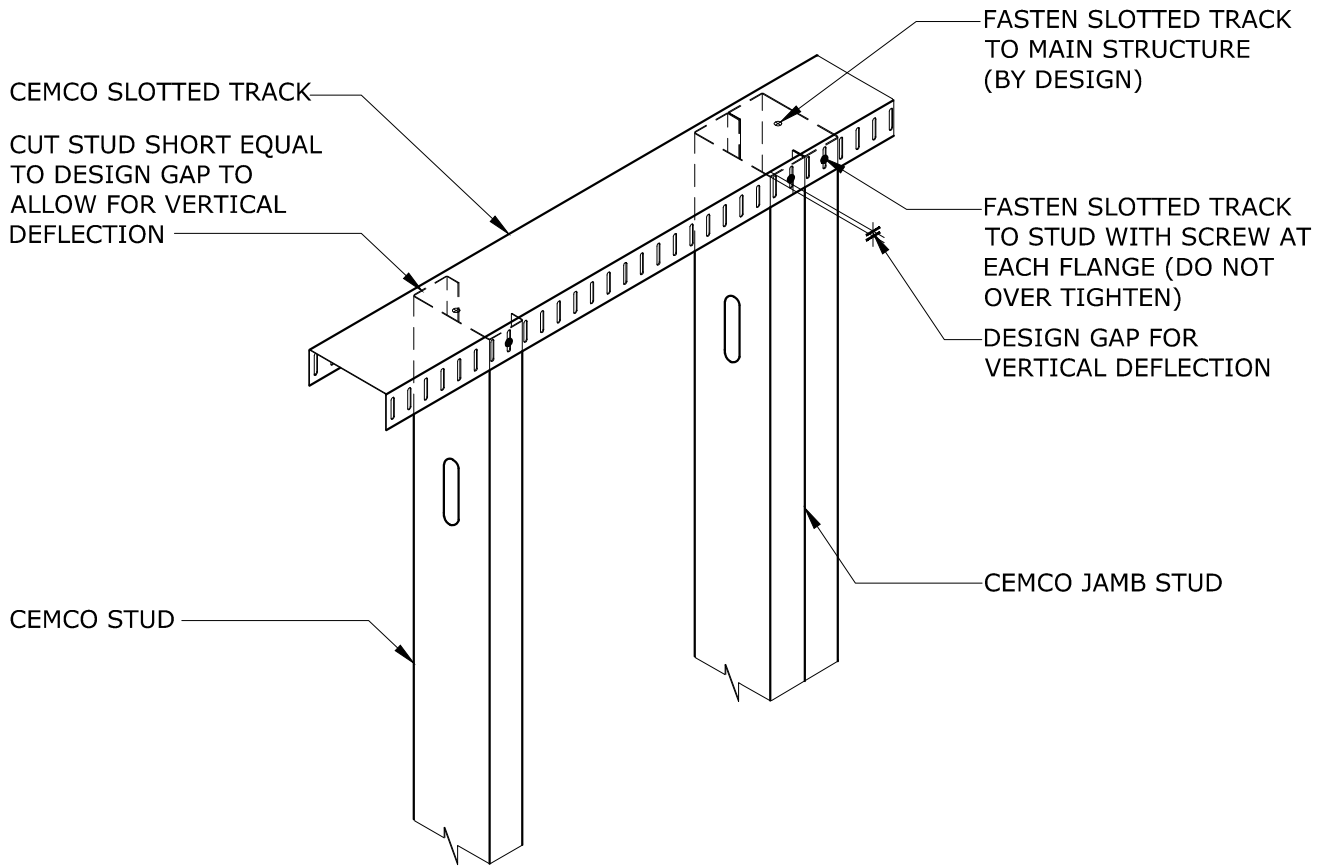
3 DEFLECTION TRACK ASSEMBLY - DOUBLE DEFLECTION TRACK SCALE: N.T.S.

 <p>CEMCO ENGINEERING 1001-A PITTSBURG ANTIOCH HWY PITTSBURG, CA 94565 ENG. DEPT. 925.473-9340 FAX 925.473.9124 www.cemcosteel.com</p>	<p>DISCLAIMER:</p> <p>CEMCO assumes no liability for failure resulting from the use of it's drawings, or for failure resulting from the use of alternate materials, or improper application or installation. This drawing is supplied solely to assist in the selection and application of CEMCO products. This drawing is generic in nature and should not be used in design or construction without an independent evaluation by a qualified Architect or Engineer of Record.</p>	<p>CATEGORY:</p> <p>NON-LOAD BEARING WALL DETAILS</p>
	<p>REV: 0 RELEASE: 12/12/2011</p>	

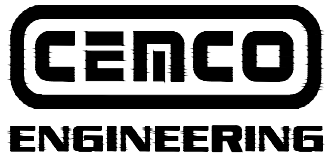


3A DEFLECTION TRACK ASSEMBLY - DOUBLE DEFLECTION TRACK WITH CEMCO FAS TRACK DL2 SCALE: N.T.S.

 <p>CEMCO ENGINEERING 1001-A PITTSBURG ANTIOCH HWY PITTSBURG, CA 94565 ENG. DEPT. 925.473-9340 FAX 925.473.9124 www.cemcosteel.com</p>	<p>DISCLAIMER:</p> <p>CEMCO assumes no liability for failure resulting from the use of it's drawings, or for failure resulting from the use of alternate materials, or improper application or installation. This drawing is supplied solely to assist in the selection and application of CEMCO products. This drawing is generic in nature and should not be used in design or construction without an independent evaluation by a qualified Architect or Engineer of Record.</p>	<p>CATEGORY:</p> <p>NON-LOAD BEARING WALL DETAILS</p>
	<p>REV: 0 RELEASE: 12/12/2011</p>	



4 DEFLECTION TRACK ASSEMBLY - SINGLE SLOTTED TRACK SCALE: N.T.S.



1001-A PITTSBURG ANTIOCH HWY
 PITTSBURG, CA 94565
 ENG. DEPT. 925.473-9340
 FAX 925.473.9124
 www.cemcosteel.com

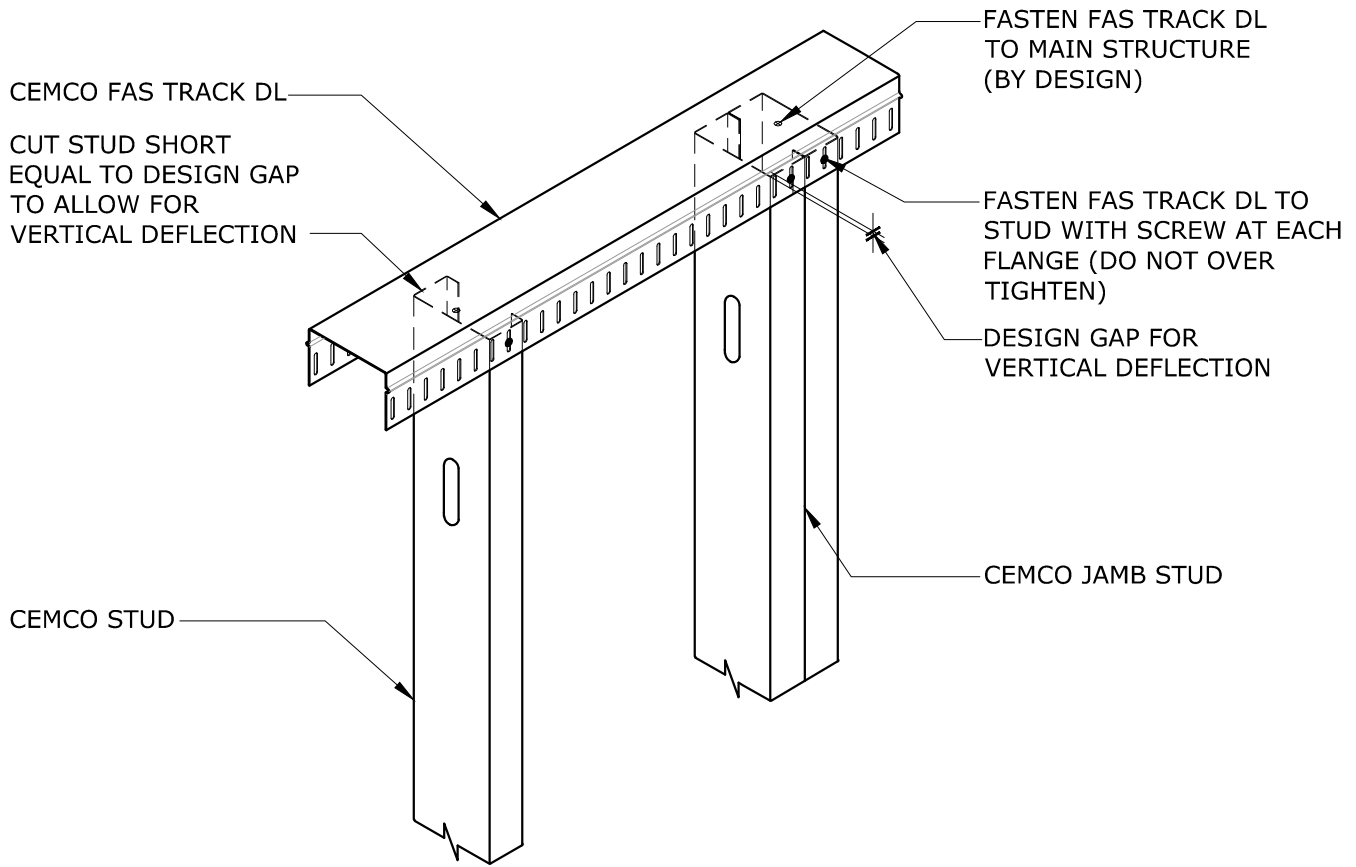
DISCLAIMER:

CEMCO assumes no liability for failure resulting from the use of it's drawings, or for failure resulting from the use of alternate materials, or improper application or installation. This drawing is supplied solely to assist in the selection and application of CEMCO products. This drawing is generic in nature and should not be used in design or construction without an independent evaluation by a qualified Architect or Engineer of Record.

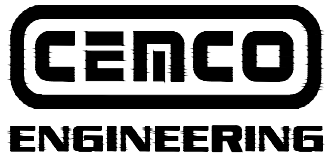
CATEGORY:

NON-LOAD BEARING WALL DETAILS

REV: 0
RELEASE: 12/12/2011



4A DEFLECTION TRACK ASSEMBLY - FAS TRACK DL SCALE: N.T.S.



1001-A PITTSBURG ANTIOCH HWY
 PITTSBURG, CA 94565
 ENG. DEPT. 925.473-9340
 FAX 925.473.9124
 www.cemcosteel.com

DISCLAIMER:
 CEMCO assumes no liability for failure resulting from the use of it's drawings, or for failure resulting from the use of alternate materials, or improper application or installation. This drawing is supplied solely to assist in the selection and application of CEMCO products. This drawing is generic in nature and should not be used in design or construction without an independent evaluation by a qualified Architect or Engineer of Record.

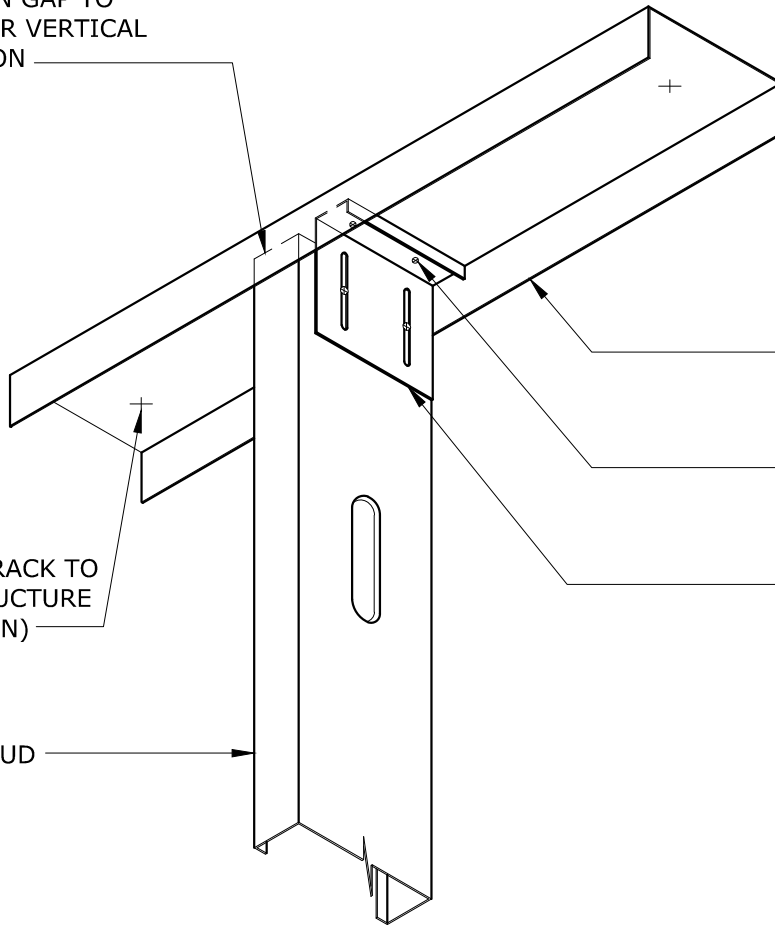
CATEGORY:
NON-LOAD BEARING WALL DETAILS

REV: 0
 RELEASE: 12/12/2011

CUT STUD SHORT EQUAL
TO DESIGN GAP TO
ALLOW FOR VERTICAL
DEFLECTION

FASTEN TRACK TO
MAIN STRUCTURE
(BY DESIGN)

CEMCO STUD



CEMCO TRACK

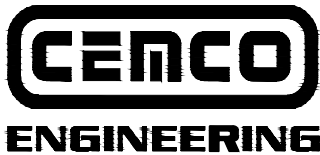
SCREW ATTACH (SCREW
SIZE & QUANTITY,
BY DESIGN)

CEMCO DEFLEX CLIP
(BY DESIGN)

5

WALL DEFLECTION - CEMCO DEFLEX VERTICAL SLIDE CLIP

SCALE: N.T.S.



1001-A PITTSBURG ANTIOCH HWY
PITTSBURG, CA 94565
ENG. DEPT. 925.473-9340
FAX 925.473.9124
www.cemcosteel.com

DISCLAIMER:

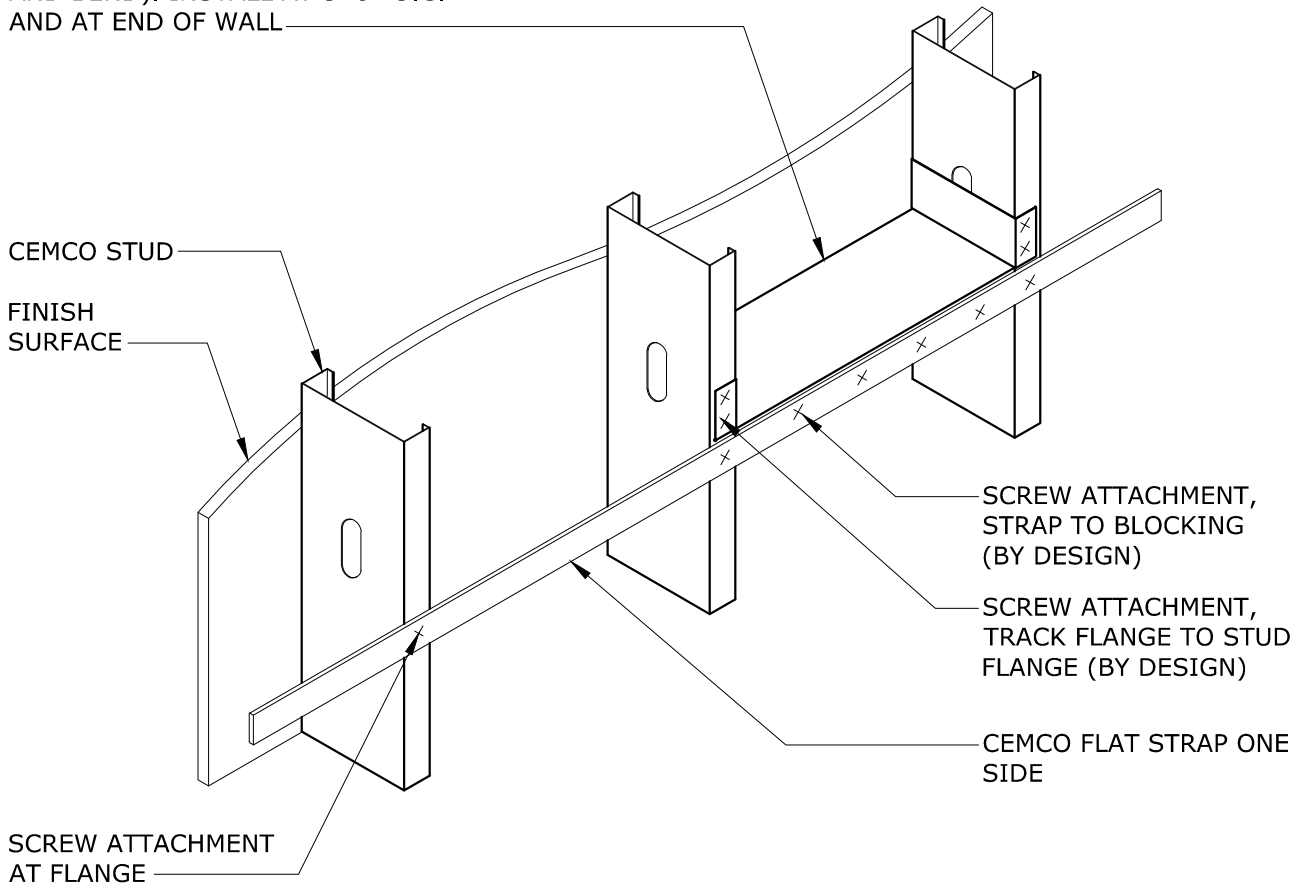
CEMCO assumes no liability for failure resulting from the use of it's drawings, or for failure resulting from the use of alternate materials, or improper application or installation. This drawing is supplied solely to assist in the selection and application of CEMCO products. This drawing is generic in nature and should not be used in design or construction without an independent evaluation by a qualified Architect or Engineer of Record.

CATEGORY:

**NON-LOAD
BEARING WALL
DETAILS**

REV: 0
RELEASE: 12/12/2011

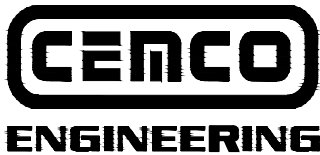
CEMCO TRACK BLOCK PIECE TO MATCH WALL STUD (CLIP FLANGE AND BEND). INSTALL AT 8'-0" O.C. AND AT END OF WALL



6

BRIDGING - SINGLE FLAT STRAP WITH BLOCKING

SCALE: N.T.S.



1001-A PITTSBURG ANTIOCH HWY
 PITTSBURG, CA 94565
 ENG. DEPT. 925.473-9340
 FAX 925.473.9124
 www.cemcosteel.com

DISCLAIMER:

CEMCO assumes no liability for failure resulting from the use of it's drawings, or for failure resulting from the use of alternate materials, or improper application or installation. This drawing is supplied solely to assist in the selection and application of CEMCO products. This drawing is generic in nature and should not be used in design or construction without an independent evaluation by a qualified Architect or Engineer of Record.

CATEGORY:

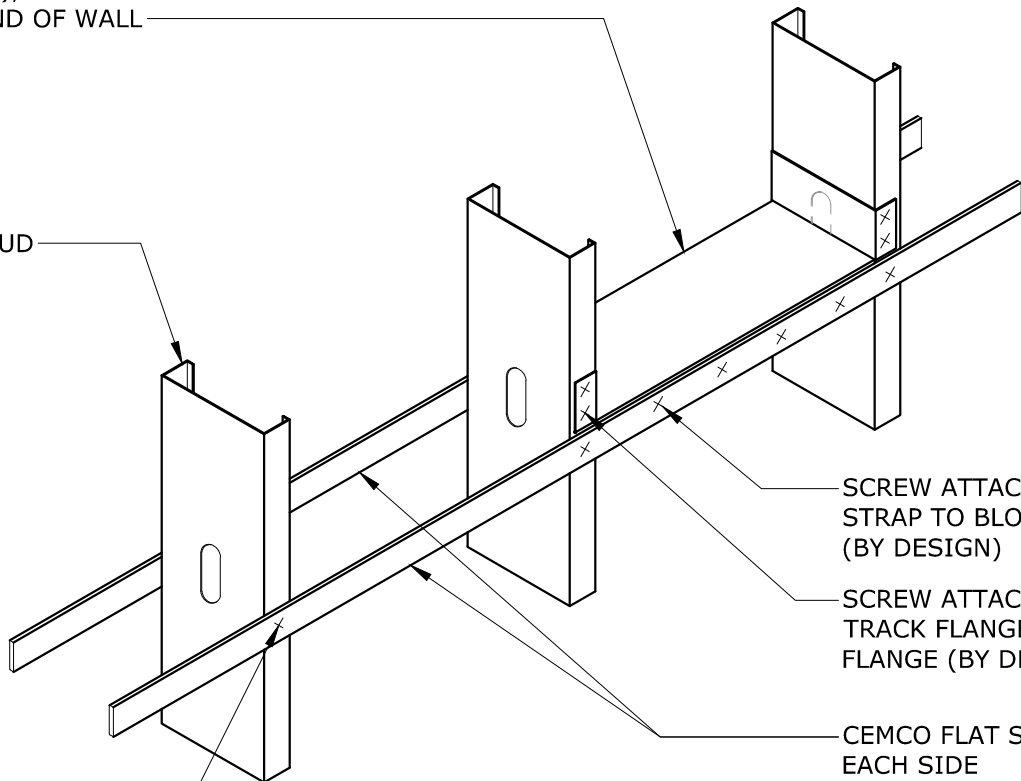
NON-LOAD BEARING WALL DETAILS

REV: 0
 RELEASE: 12/12/2011

CEMCO TRACK BLOCK PIECE TO MATCH WALL STUD (CLIP FLANGE AND BEND), INSTALL AT 8'-0" O.C. AND AT END OF WALL

CEMCO STUD

SCREW ATTACHMENT AT EACH FLANGE



SCREW ATTACHMENT STRAP TO BLOCKING (BY DESIGN)

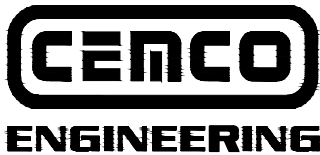
SCREW ATTACHMENT, TRACK FLANGE TO STUD FLANGE (BY DESIGN)

CEMCO FLAT STRAP AT EACH SIDE

7

BRIDGING - DOUBLE FLAT STRAP WITH BLOCKING

SCALE: N.T.S.



1001-A PITTSBURG ANTIOCH HWY
 PITTSBURG, CA 94565
 ENG. DEPT. 925.473-9340
 FAX 925.473.9124
 www.cemcosteel.com

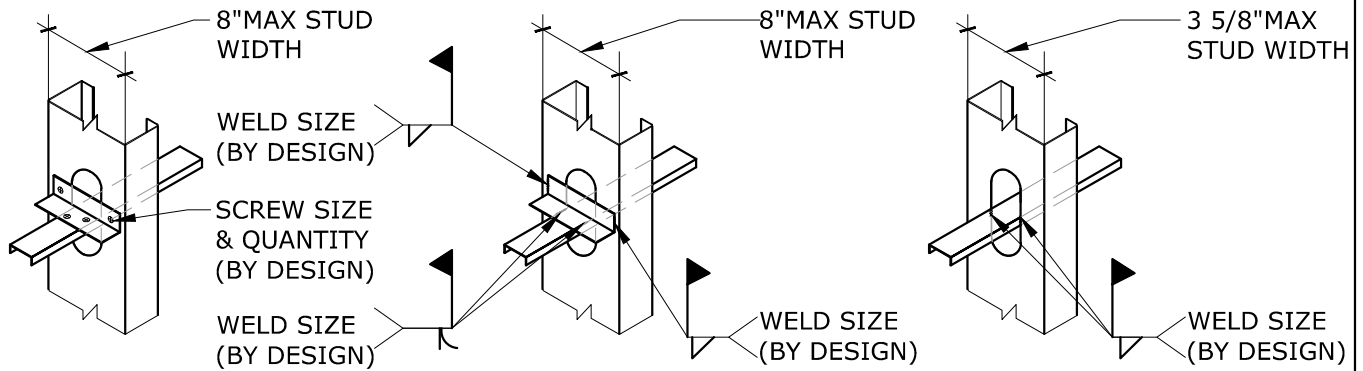
DISCLAIMER:

CEMCO assumes no liability for failure resulting from the use of it's drawings, or for failure resulting from the use of alternate materials, or improper application or installation. This drawing is supplied solely to assist in the selection and application of CEMCO products. This drawing is generic in nature and should not be used in design or construction without an independent evaluation by a qualified Architect or Engineer of Record.

CATEGORY:

NON-LOAD BEARING WALL DETAILS

REV: 0
 RELEASE: 12/12/2011



OPTION 1:
SCREWED ATTACHMENT
OF LATERAL BRACING

OPTION 2:
WELDED ATTACHMENT
OF LATERAL BRACING

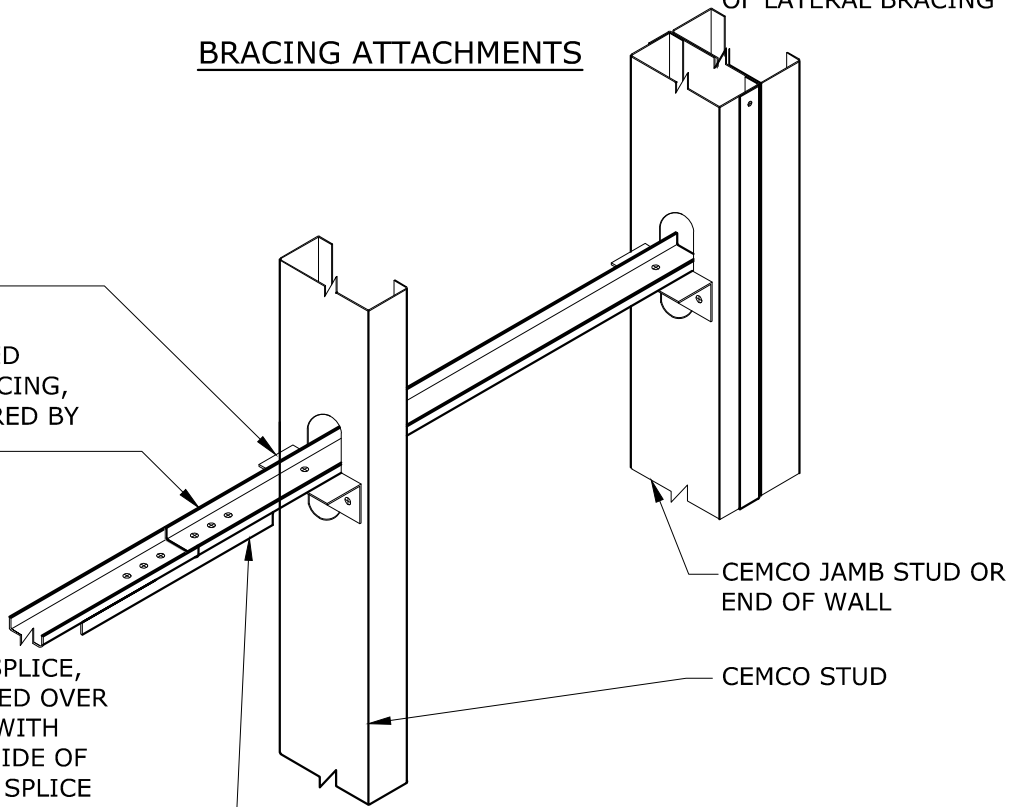
OPTION 3:
WELDED ATTACHMENT
OF LATERAL BRACING

BRACING ATTACHMENTS

CEMCO ANGLE CLIP,
FASTENED TO STUD
AND CRC CHANNEL
(BY DESIGN)

CEMCO COLD ROLLED
(CRC) LATERAL BRACING,
(SPACED AS REQUIRED BY
DESIGN)

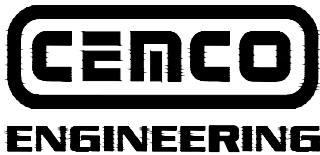
LATERAL BRACING SPLICE,
CEMCO CRC INVERTED OVER
CENTER OF SPLICE WITH
SCREWS ON EACH SIDE OF
SPLICE (LENGTH OF SPLICE
CONNECTION AND QUANTITY
OF SCREWS BY DESIGN)



CEMCO JAMB STUD OR
END OF WALL

CEMCO STUD

8 BRIDGING - COLD ROLLED CHANNEL WITH CLIP ANGLE SCALE: N.T.S.



1001-A PITTSBURG ANTIOCH HWY
PITTSBURG, CA 94565
ENG. DEPT. 925.473-9340
FAX 925.473.9124
www.cemcosteel.com

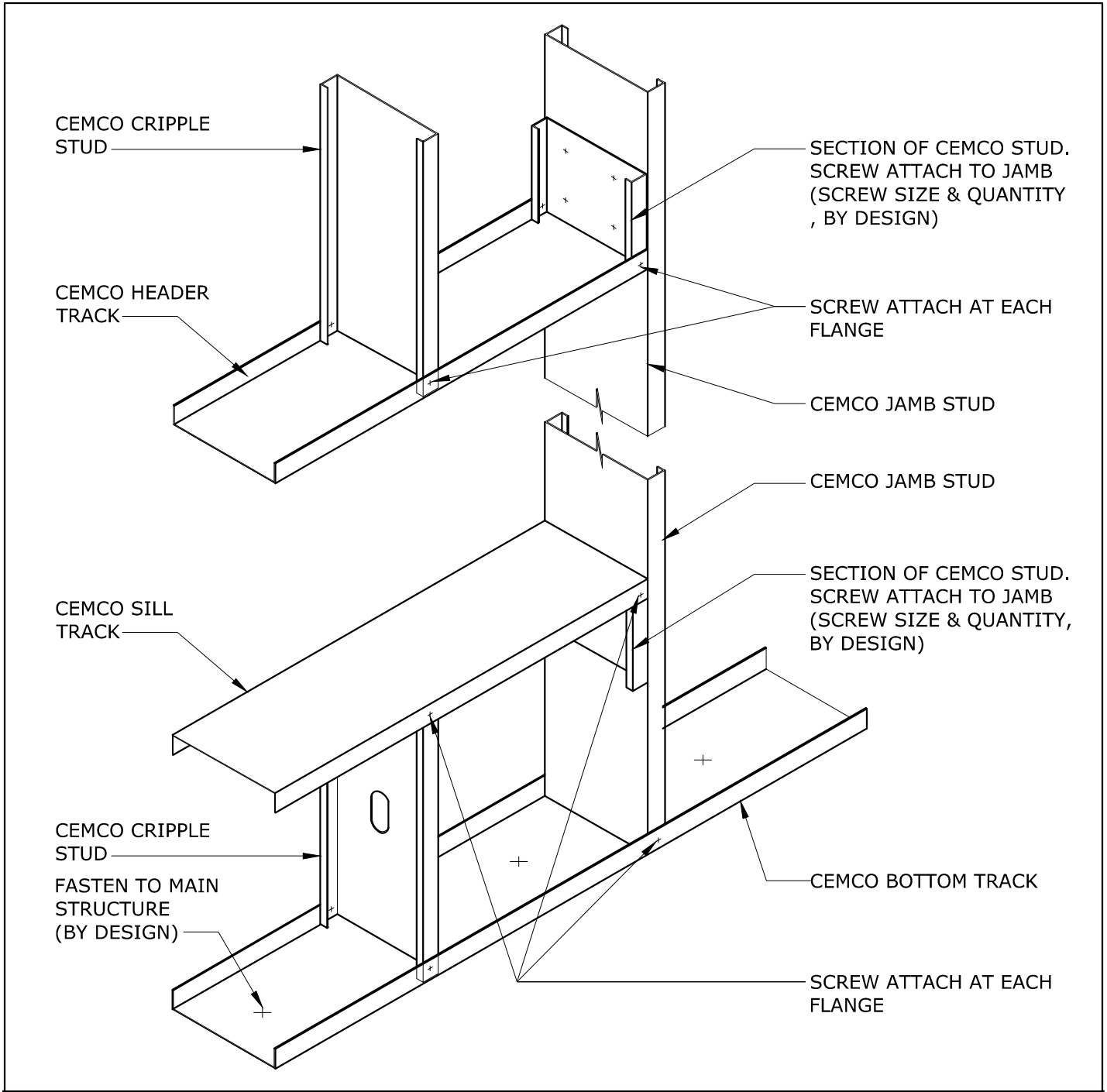
DISCLAIMER:

CEMCO assumes no liability for failure resulting from the use of it's drawings, or for failure resulting from the use of alternate materials, or improper application or installation. This drawing is supplied solely to assist in the selection and application of CEMCO products. This drawing is generic in nature and should not be used in design or construction without an independent evaluation by a qualified Architect or Engineer of Record.

CATEGORY:

**NON-LOAD
BEARING WALL
DETAILS**

REV: 0
RELEASE: 12/12/2011



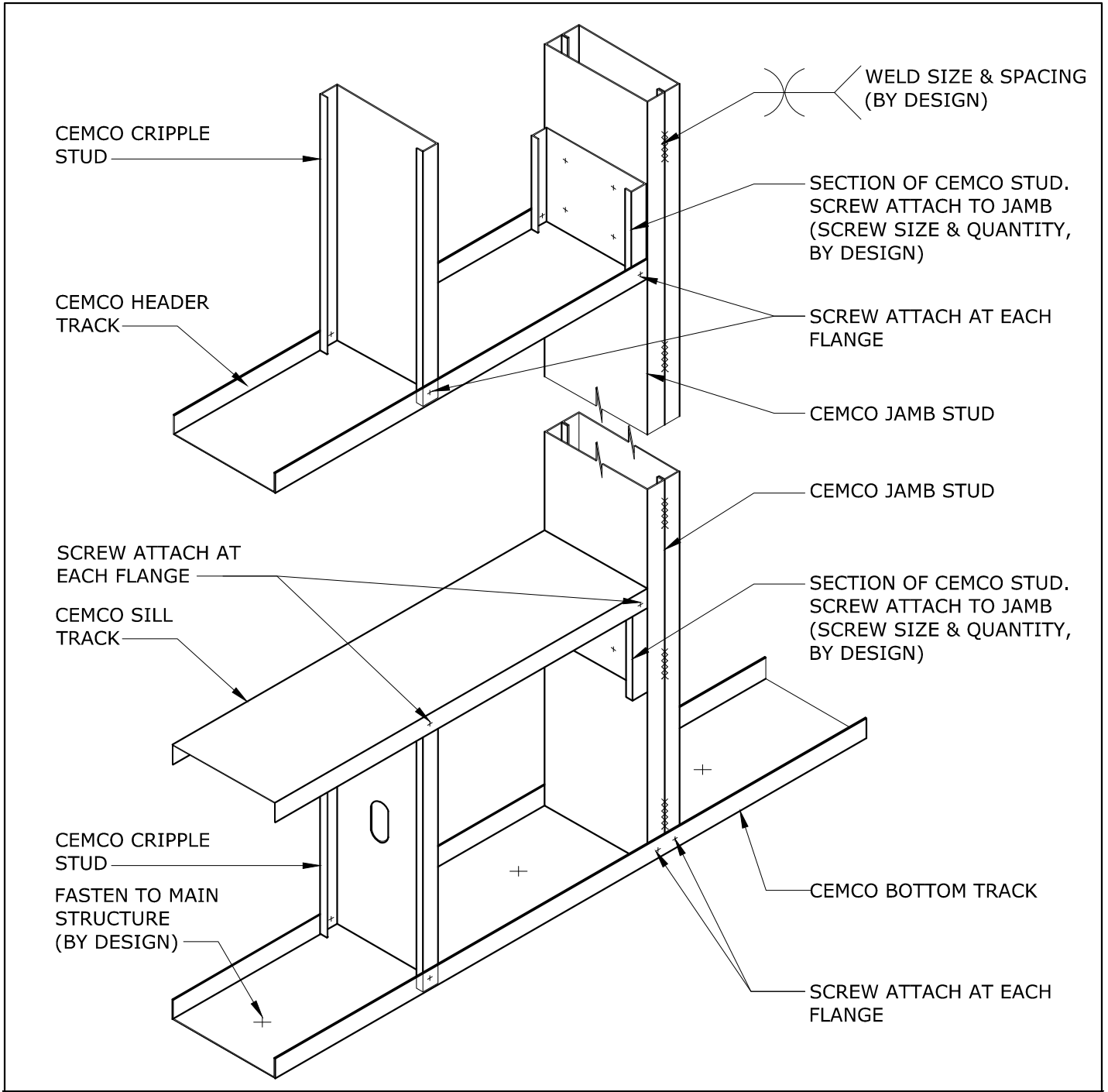
9 WINDOW NON-LOAD BEARING SINGLE TRACK HEADER & SILL, SINGLE JAMB SCALE: N.T.S.

CEMCO ENGINEERING
 1001-A PITTSBURG ANTIOCH HWY
 PITTSBURG, CA 94565
 ENG. DEPT. 925.473-9340
 FAX 925.473.9124
 www.cemcosteel.com


DISCLAIMER:
 CEMCO assumes no liability for failure resulting from the use of it's drawings, or for failure resulting from the use of alternate materials, or improper application or installation. This drawing is supplied solely to assist in the selection and application of CEMCO products. This drawing is generic in nature and should not be used in design or construction without an independent evaluation by a qualified Architect or Engineer of Record.

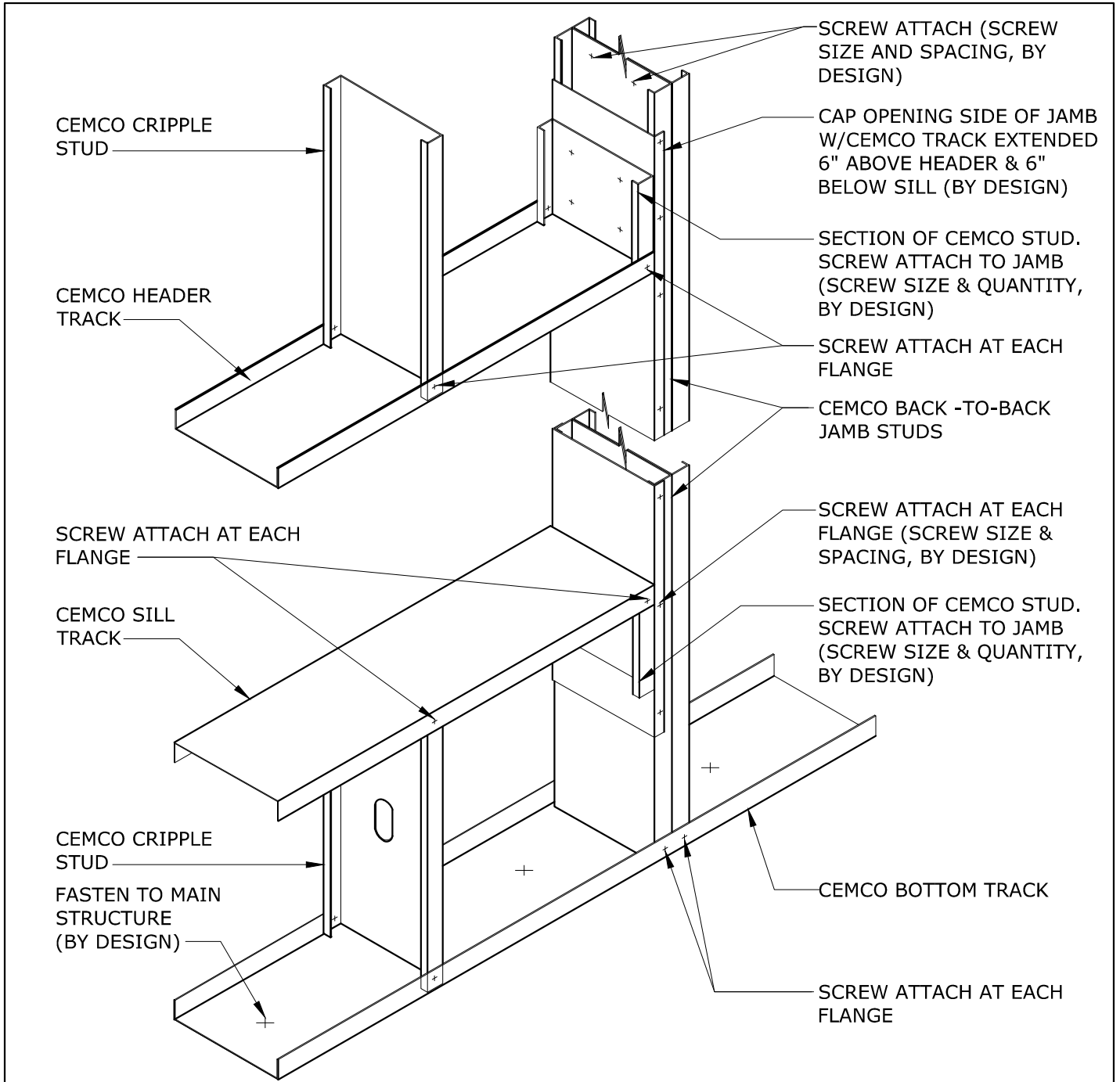
CATEGORY:
NON-LOAD BEARING WALL DETAILS

REV: 0
 RELEASE: 12/12/2011



10 WINDOW NON-LOAD BEARING SINGLE TRACK HEADER & SILL, BOXED JAMB SCALE: N.T.S.

 <p>CEMCO ENGINEERING 1001-A PITTSBURG ANTIOCH HWY PITTSBURG, CA 94565 ENG. DEPT. 925.473-9340 FAX 925.473.9124 www.cemcosteel.com</p>	<p>DISCLAIMER:</p> <p>CEMCO assumes no liability for failure resulting from the use of it's drawings, or for failure resulting from the use of alternate materials, or improper application or installation. This drawing is supplied solely to assist in the selection and application of CEMCO products. This drawing is generic in nature and should not be used in design or construction without an independent evaluation by a qualified Architect or Engineer of Record.</p>	<p>CATEGORY:</p> <p>NON-LOAD BEARING WALL DETAILS</p>
	<p>REV: 0 RELEASE: 12/12/2011</p>	



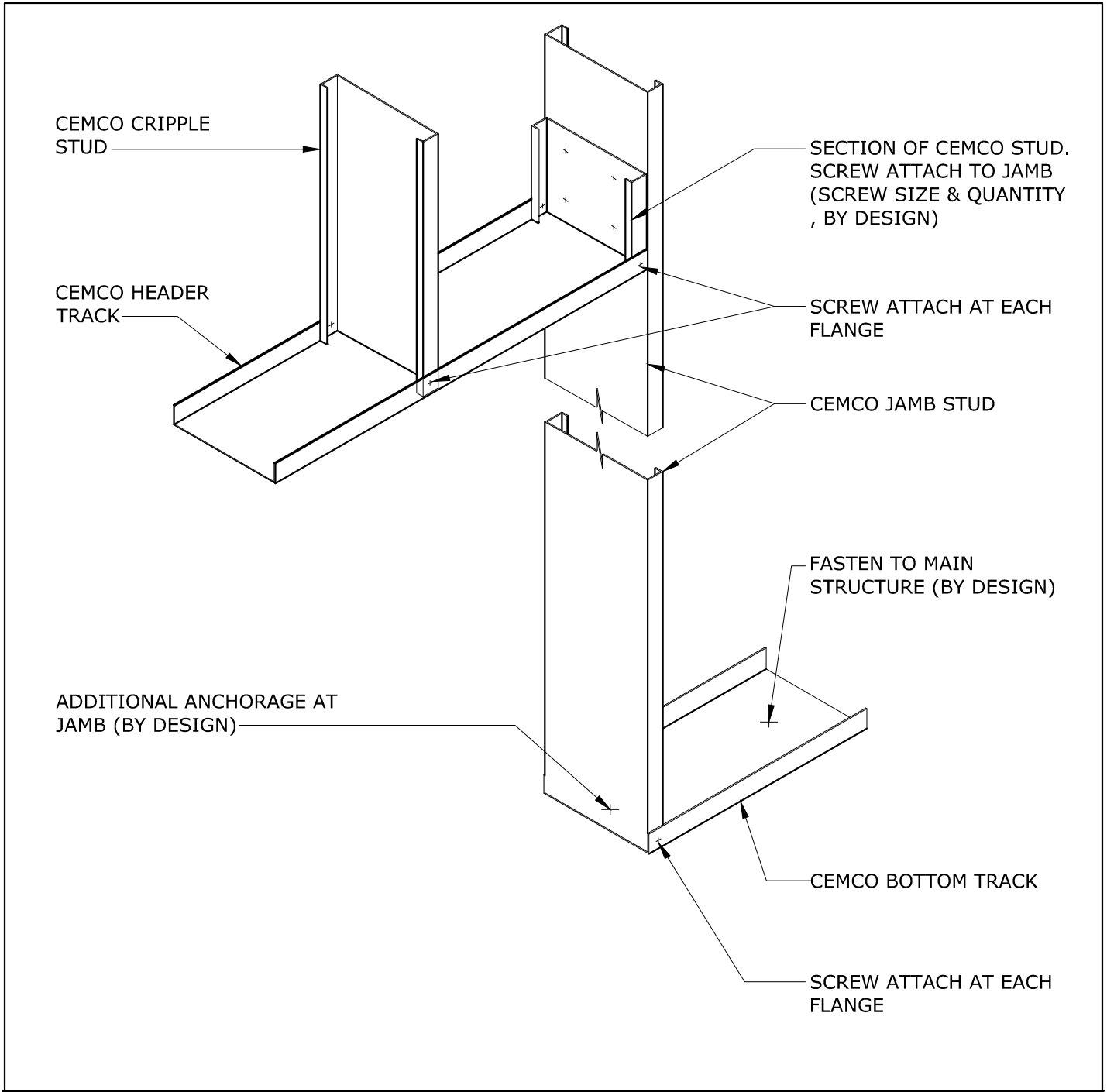
11 WINDOW NON-LOAD BEARING SINGLE TRACK HEADER & SILL, BACK-TO-BACK JAMB SCALE: N.T.S.

CEMCO ENGINEERING
 1001-A PITTSBURG ANTIOCH HWY
 PITTSBURG, CA 94565
 ENG. DEPT. 925.473-9340
 FAX 925.473.9124
 www.cemcosteel.com

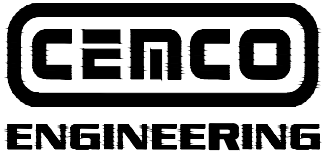
DISCLAIMER:
 CEMCO assumes no liability for failure resulting from the use of it's drawings, or for failure resulting from the use of alternate materials, or improper application or installation. This drawing is supplied solely to assist in the selection and application of CEMCO products. This drawing is generic in nature and should not be used in design or construction without an independent evaluation by a qualified Architect or Engineer of Record.

CATEGORY:
NON-LOAD BEARING WALL DETAILS

REV: 0
 RELEASE: 12/12/2011



12 DOOR NON-LOAD BEARING SINGLE TRACK HEADER & SINGLE JAMB SCALE: N.T.S.



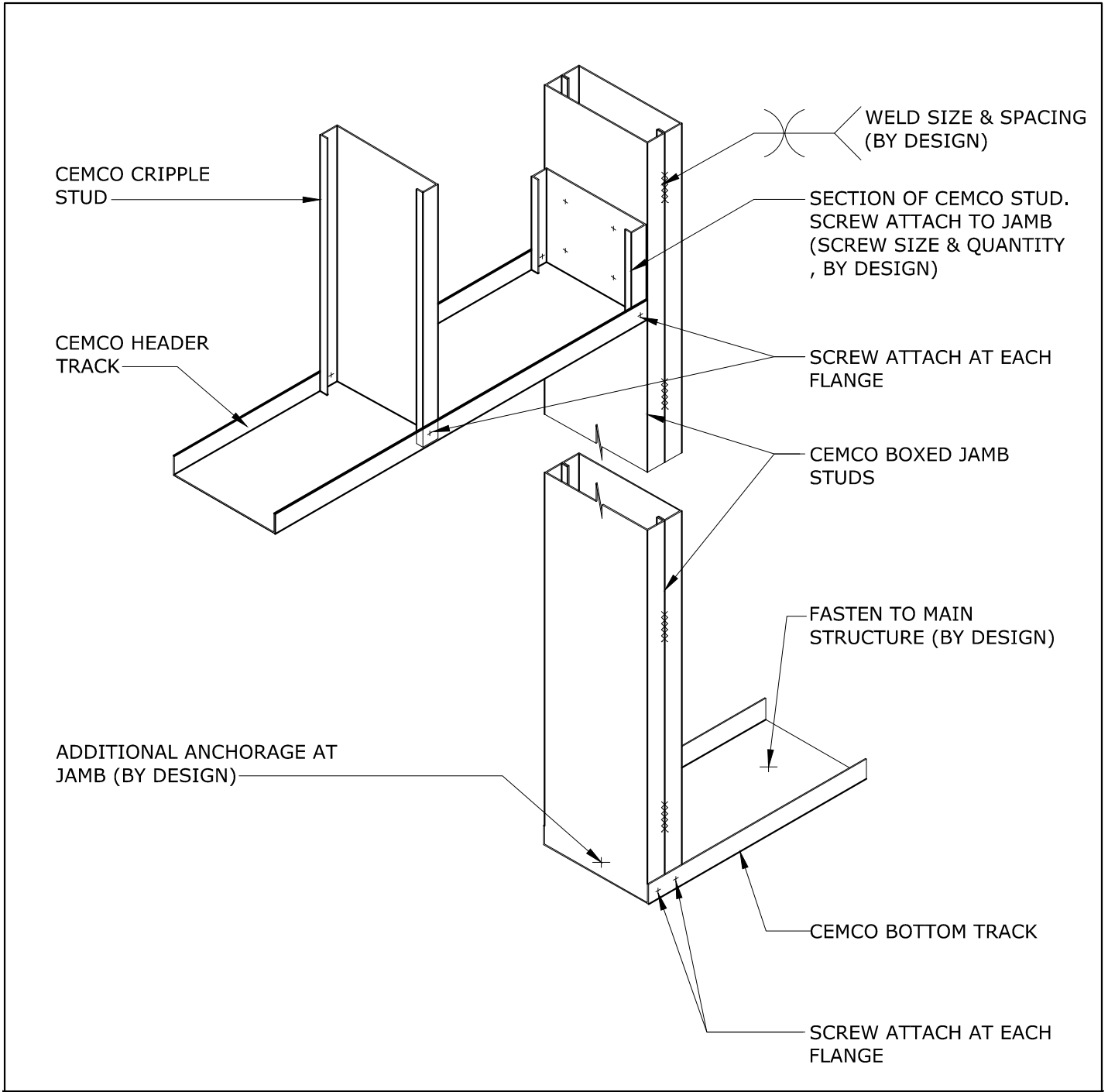
1001-A PITTSBURG ANTIOCH HWY
 PITTSBURG, CA 94565
 ENG. DEPT. 925.473-9340
 FAX 925.473.9124
 www.cemcosteel.com

DISCLAIMER:


CEMCO assumes no liability for failure resulting from the use of it's drawings, or for failure resulting from the use of alternate materials, or improper application or installation. This drawing is supplied solely to assist in the selection and application of CEMCO products. This drawing is generic in nature and should not be used in design or construction without an independent evaluation by a qualified Architect or Engineer of Record.

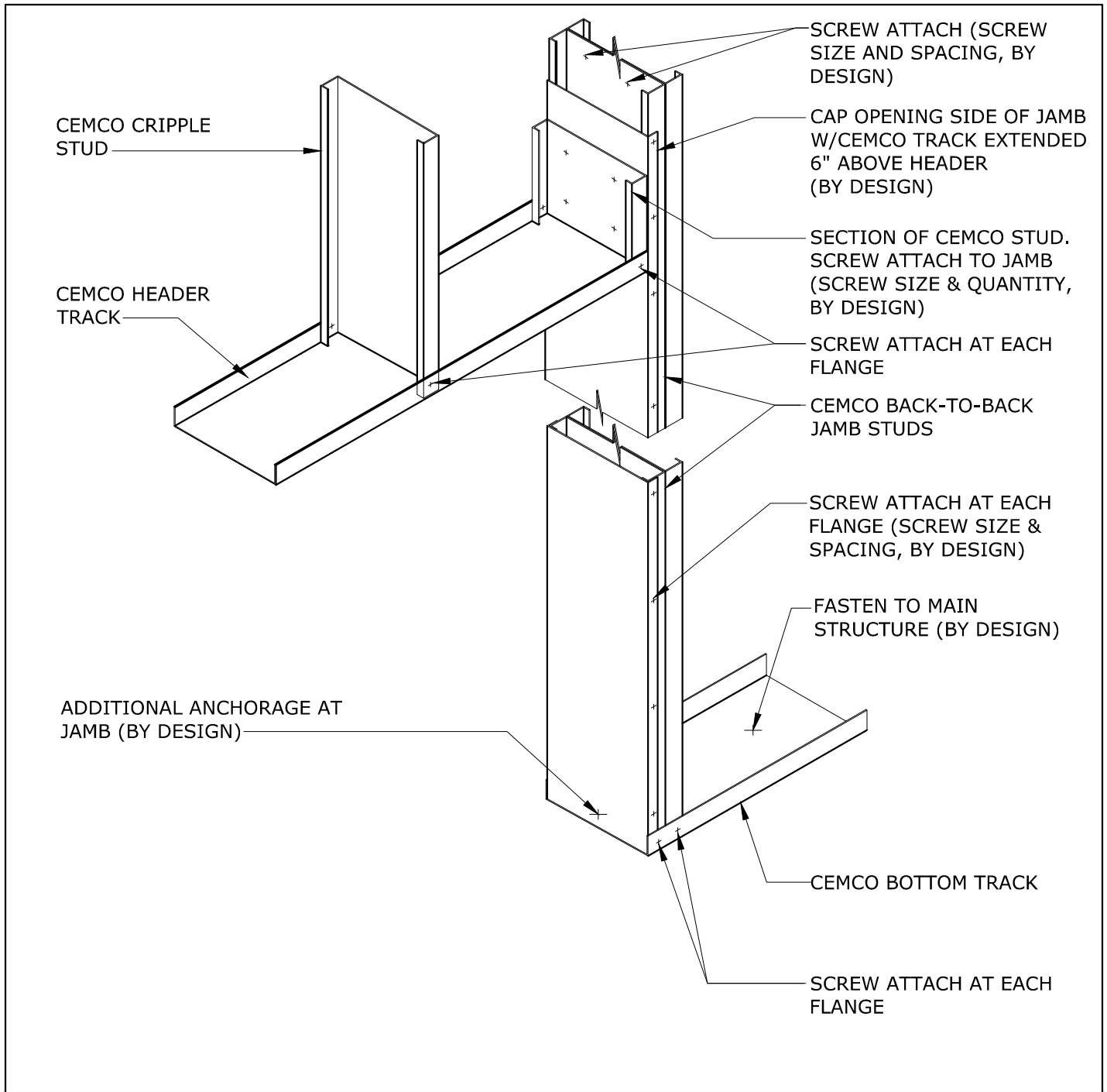
CATEGORY:

NON-LOAD BEARING WALL DETAILS

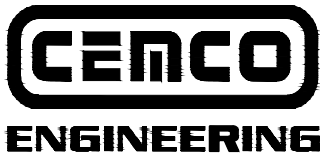


13 DOOR NON-LOAD BEARING SINGLE TRACK HEADER & BOXED JAMB SCALE: N.T.S.

 <p>CEMCO ENGINEERING 1001-A PITTSBURG ANTIOCH HWY PITTSBURG, CA 94565 ENG. DEPT. 925.473-9340 FAX 925.473.9124 www.cemcosteel.com</p>	<p>DISCLAIMER:</p> <p>CEMCO assumes no liability for failure resulting from the use of it's drawings, or for failure resulting from the use of alternate materials, or improper application or installation. This drawing is supplied solely to assist in the selection and application of CEMCO products. This drawing is generic in nature and should not be used in design or construction without an independent evaluation by a qualified Architect or Engineer of Record.</p>	<p>CATEGORY:</p> <p>NON-LOAD BEARING WALL DETAILS</p>
	<p>REV: 0 RELEASE: 12/12/2011</p>	



14 DOOR NON-LOAD BEARING SINGLE TRACK HEADER & BACK-TO-BACK JAMB SCALE: N.T.S.



1001-A PITTSBURG ANTIOCH HWY
 PITTSBURG, CA 94565
 ENG. DEPT. 925.473-9340
 FAX 925.473.9124
 www.cemcosteel.com

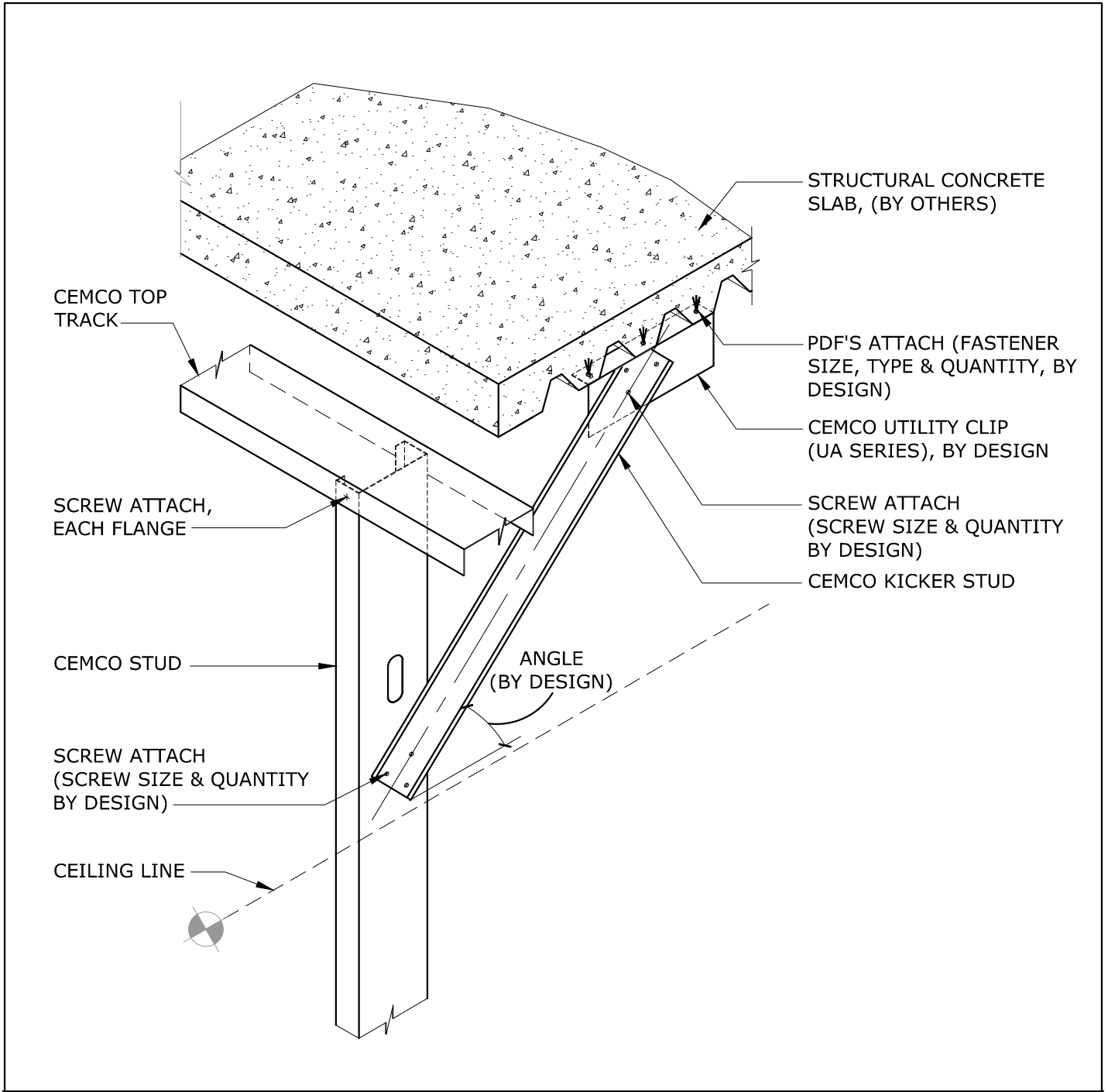
DISCLAIMER:

CEMCO assumes no liability for failure resulting from the use of it's drawings, or for failure resulting from the use of alternate materials, or improper application or installation. This drawing is supplied solely to assist in the selection and application of CEMCO products. This drawing is generic in nature and should not be used in design or construction without an independent evaluation by a qualified Architect or Engineer of Record.


CATEGORY:

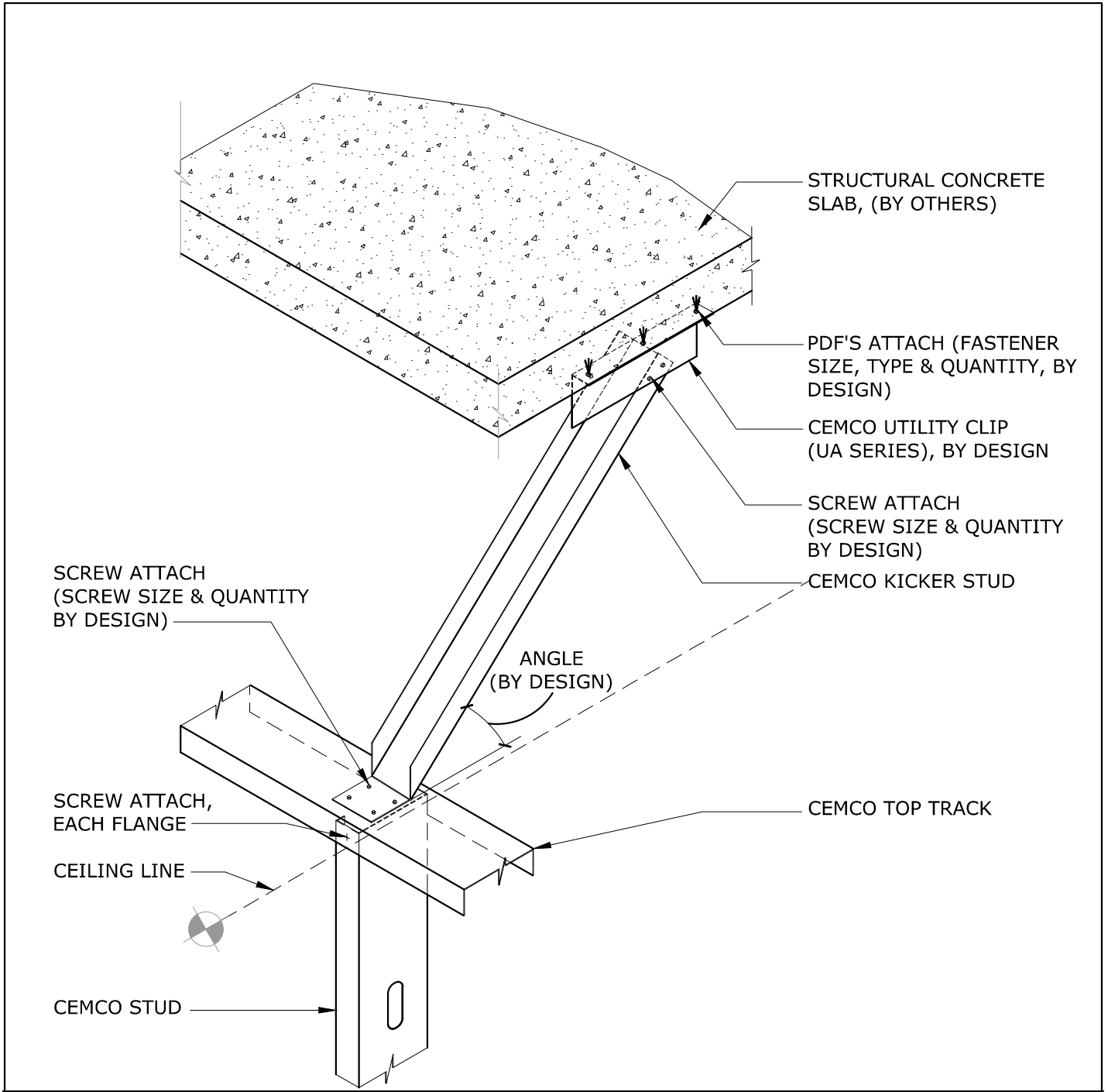
NON-LOAD BEARING WALL DETAILS

REV: 0
 RELEASE: 12/12/2011



15 NON-LOAD BEARING WALL - INTERIOR WALL FRAMED ABOVE CEILING WITH DIAGONAL BRACE SCALE: N.T.S.

 <p>CEMCO ENGINEERING 1001-A PITTSBURG ANTIOCH HWY PITTSBURG, CA 94565 ENG. DEPT. 925.473-9340 FAX 925.473.9124 www.cemcosteel.com</p>	<p>DISCLAIMER:</p> <p>CEMCO assumes no liability for failure resulting from the use of it's drawings, or for failure resulting from the use of alternate materials, or improper application or installation. This drawing is supplied solely to assist in the selection and application of CEMCO products. This drawing is generic in nature and should not be used in design or construction without an independent evaluation by a qualified Architect or Engineer of Record.</p>	<p>CATEGORY:</p> <p>NON-LOAD BEARING WALL DETAILS</p>
	<p>REV: 0 RELEASE: 12/12/2011</p>	



16 NON-LOAD BEARING WALL - INTERIOR WALL FRAMED TO CEILING WITH DIAGONAL BRACE SCALE: N.T.S.

CEMCO ENGINEERING
 1001-A PITTSBURG ANTIOCH HWY
 PITTSBURG, CA 94565
 ENG. DEPT. 925.473-9340
 FAX 925.473.9124
 www.cemcosteel.com

DISCLAIMER:
 CEMCO assumes no liability for failure resulting from the use of it's drawings, or for failure resulting from the use of alternate materials, or improper application or installation. This drawing is supplied solely to assist in the selection and application of CEMCO products. This drawing is generic in nature and should not be used in design or construction without an independent evaluation by a qualified Architect or Engineer of Record.

CATEGORY:
NON-LOAD BEARING WALL DETAILS

REV: 0
 RELEASE: 12/12/2011