

Water Management Products



CEMCO is addressing the need for water management in stucco with a new line of nine accessories that aim to combat the gamut of moisture intrusion scenarios.

All of the products have dual functions. First, they serve as stucco grounds to maintain the proper thickness. Second, they function as flashings to divert water away from the water-resistant barrier.

The products, manufactured in 25-gauge materials with a G90 galvanized coating, also answer architects' and contractors' urgent call for stucco accessories that resist corrosion.

* PATENT PENDING

ALSO AVAILABLE IN
G90 Copper



Steel Framing and Metal Lath

**Corporate Office &
Southern California
Manufacturing Facility**

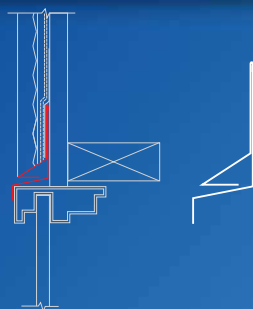
263 North Covina Lane
City of Industry, CA 91744
800.775.2362 Phone
626.330.7598 Fax

**Northern California
Manufacturing Facility**

1001-A Pittsburg Antioch Hwy
Pittsburg, CA 94565
925.473.9340 Phone
925.473.9341 Fax

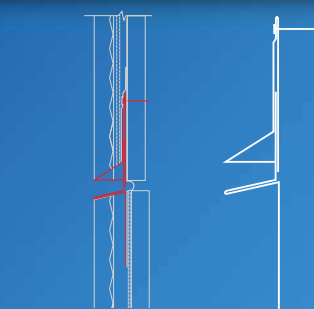
**Denver Colorado
Manufacturing Facility**

490 Osage Street
Denver, CO 80204
303.572.3626 Phone
303.572.3627 Fax



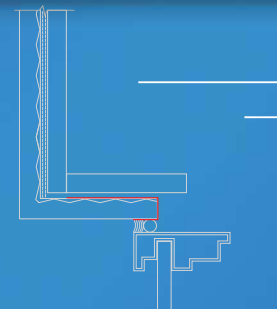
#3 Flashing Screed*

USAGE: One-piece Z-flashing weep screed combination for application at window head.



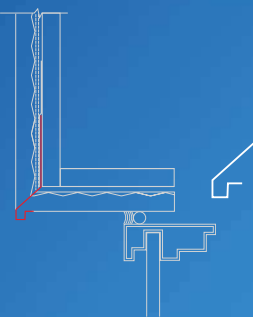
M-Slide Expansion Joint™*

USAGE: Two-piece expansion joint provides exceptional movement and water management capabilities.



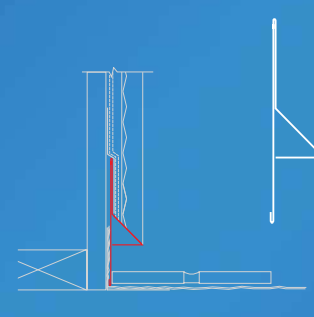
J-Series Casing Bead

USAGE: Non-perforated to enable casing bead to have flashing capabilities available in 36 different size options.



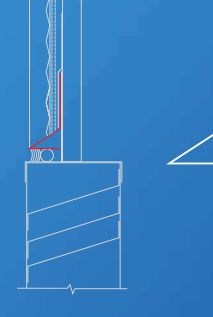
#12 Soffit Drip Edge*

USAGE: For application at soffits and recessed windows; provides drainage and drip edge.



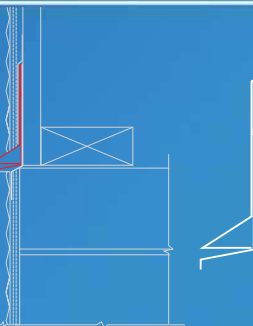
#7 Extended*

USAGE: One-piece flashing weep screed for applications at decks where flashing is needed to protect waterproof membrane.



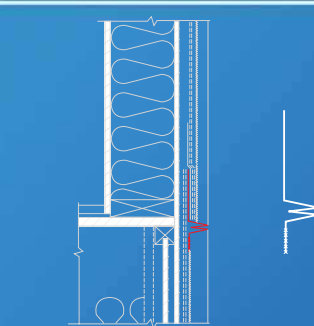
#6 Drip Head

USAGE: For application above vents and doors; water can weep out of the slope leg and solid return leg used for sealant application.



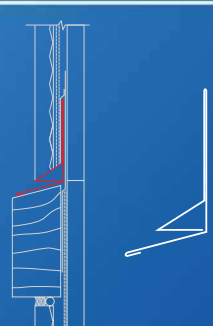
#9 Transition Control Joint*

USAGE: One-piece drainage accessory for application at substrate transitions between masonry and framed walls.



#15 Solid Leg*

USAGE: One-piece horizontal control joint that provides a drainage point in the stucco assembly.



#17 Base Flashing*

USAGE: One-piece counter flashing weep screed combination for transitions between dissimilar materials.

Dimensions and Specification Sheets can be downloaded at
www.cemcosteel.com