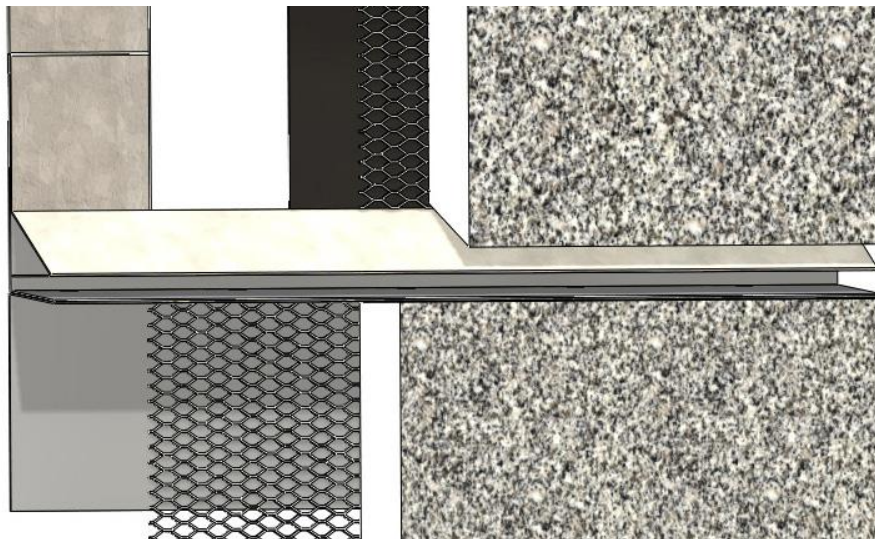
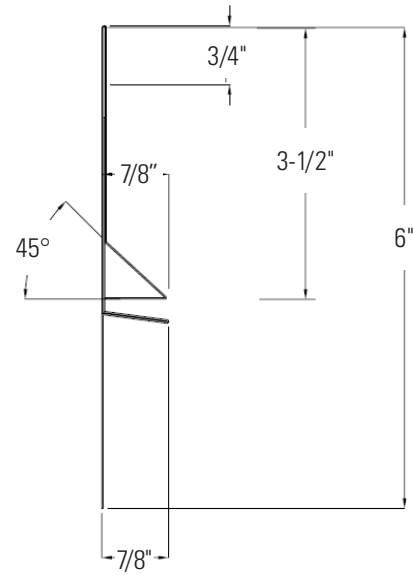
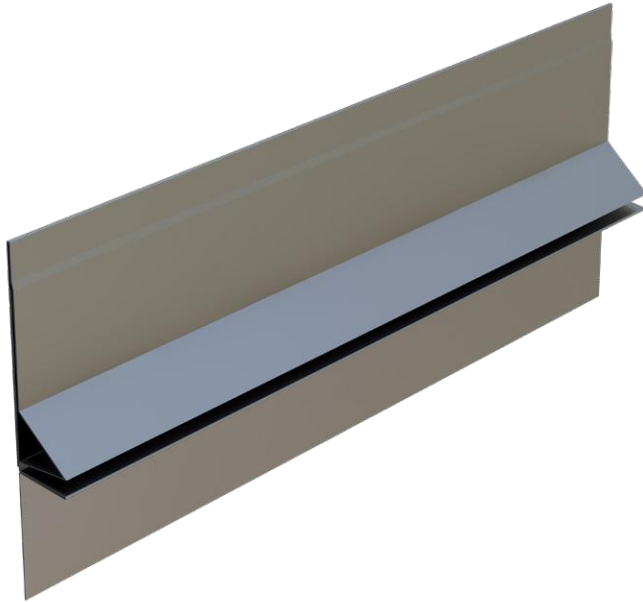


## M-SLIDE EXPANSION JOINT™ SPECIFICATION



The **M-SLIDE EXPANSION JOINT™** is manufactured for application where movement is anticipated. The self-aligning two-piece design allows for 1-inch vertical movement while maintaining a watertight assembly for plaster walls. M-Slide expansion joint is part of CEMCO's Water Management Line of stucco accessories fabricated from minimum 0.018-inch thick hot-dipped galvanized steel complying with ASTM A653 having a minimum G-90 coating complying with ASTM A925. **Water tested per ASTM E1105. US PATENT NO. 7,673,421 B2.**

Size	Pcs./Bundle	Length	Ft./Bundle	Wt./Bundle	Pcs./Pallet
7/8" (0.875")	10	10'	100	9.4 lbs.	200

### Technical Services

Technical Services: 800.416.2278  
Structural Engineering/Design: 925.473.9340  
www.cemcosteel.com



This technical information reflects the most current information available and supersedes any and all previous publications effective September 18, 2024.  
09-18-24 AT