

CertainTeed

1/4" Flex

Gypsum Board

Product Data and Submittal

Product Description

CertainTeed 1/4" Flex is a gypsum board specially designed for curved applications. Curved partitions and surfaces present an aesthetic alternative to conventional flat construction, enabling interior designers, building owners and home owners to create soft, innovative looks. CertainTeed 1/4" Flex provides the greater installation flexibility required to take the contour of frame placement. Available in 1/4" (6.35 mm) thickness, CertainTeed 1/4" Flex is ideal for curved staircases and ceilings as well as column enclosures in low and high-rise residences, sport facilities, schools, condominiums and office areas.

CertainTeed 1/4" Flex is composed of gypsum core enclosed in ivory-colored face paper and liner back paper. The gypsum is inherently non-combustible. The edges of the face side are slightly tapered for easy joint treatment. Like all CertainTeed Gypsum Board Products, CertainTeed 1/4" Flex can be painted, textured, or wallpapered to desired aesthetic tastes.

Because it is more lightweight, CertainTeed 1/4" Flex is easier to install than other gypsum board products.

In many gypsum board applications, wetting or dampening methods had to be used to achieve desired curvatures. When using CertainTeed 1/4" Flex, minimum bending radii (as indicated on chart in this data sheet) can be achieved using proper dry installation methods (without wetting or dampening). For continuity, two layers of CertainTeed Flex's 1/4" (6.35 mm) thickness marries with adjacent constructions which commonly use 1/2" (12.7 mm) gypsum board.

Under normal atmospheric conditions and changes, expansion and contraction of CertainTeed 1/4" Flex gypsum board is negligible.

Advantages

- High edge hardness.
- No wavy edges, warps, bows or deformities.
- Uniform high-strength cores eliminate crumbling, cracking.
- Edge tapers consistent to form perfect joints.
- Excellent thermal barrier and sound attenuation qualities.

Limitations

- All materials should be kept dry by being stored indoors.
- All materials should be neatly stacked flat on a level platform.
- Not recommended for exterior application.
- Not recommended for use where greater than normal moisture resistance is required.
- Not recommended for continuous exposure to temperatures exceeding 125°F (52°C).

Product Data

Thicknesses: 1/4" (6,35 mm)

Widths: 4' (1220 mm) estándar

Lengths: 8', 12' estándar
(2440, 3660 mm)

Weight: 1.0 lb/ft² (4.9 kg/m²)

Core: Gypsum (non-combustible) premium quality natural (mined) gypsum, recycled gypsum and DSG (from flue gas desulphurisation, FGD) are used to manufacture CertainTeed Gypsum Board Products.

Edge: Tapered, paper bound - factory finished

End: Square-factory cut

Continued on back

Job Name

Contractor

Date

Products Specified:

Submittal Approvals
(Stamps or Signatures)

CertainTeed
SAINT-GOBAIN

Packaging: Two pieces per bundle, face-to-face and end-taped

Special widths, lengths or edges may be available on special order. Consult your CertainTeed sales representative.

Technical Data

Surface Burning Characteristics

All CertainTeed 1/4" Flex Gypsum Board have a Flame Spread rating of 15 and Smoke Developed rating of 0, in accordance with ASTM E84, (UL 723, UBC 8-1, NFPA 255, CAN/ULC-S102).

Applicable Standards and References

- ASTM C1396
- ASTM C36 standards
- ASTM C840
- Gypsum Association GA-216
- Gypsum Association GA-214
- ICC International Building Code (IBC)
- National Building Code of Canada (NBCC)

Installation

For application of plastic-finished rigid wall panels, recommendations of the panel manufacturer should be followed.

Finishing Standards

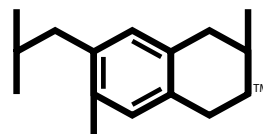
To improve fastener concealment where gypsum panel walls and ceilings will be subjected to strong artificial or natural side lighting and/or decorated with a gloss paint (egg shell, semi-gloss or gloss), the gypsum panel surface should be skim coated with joint compound to equalize suction before painting. (Level 5 Finish)

Notice

The information in this document is subject to change without notice. CertainTeed assumes no responsibility for any errors that may inadvertently appear in this document.

MINIMUM BENDING RADII

Application	Board Applied Vertical (Parallel to Framing)		Board Applied Horizontal (Perpendicular to Framing)	
	min. bend radii	max. stud spacing	min. bend radii	max stud spacing
Outside (convex) Dry	12" (300 mm)	6" (150 mm)	30" (760 mm)	9" (225 mm)
Inside (concave) Dry	20" (500 mm)	8" (200 mm)	30" (760 mm)	9" (225 mm)
Outside (convex) Wet	7" (175 mm)	5" (125 mm)	14" (360 mm)	6" (150 mm)
Inside (concave) Wet	10" (250 mm)	6" (150 mm)	20" (500 mm)	8" (200 mm)



Health Product DECLARATION

The Health Product Declaration™ and logo is owned by the Health Product Declaration Collaborative™ and is used with permission.



ASK ABOUT ALL OF OUR OTHER CERTAINTEED® PRODUCTS AND SYSTEMS:

ROOFING • SIDING • TRIM • DECKING • RAILING • FENCE
GYPSUM • CEILINGS • INSULATION

www.certainteed.com <http://blog.certainteed.com>

CertainTeed Corporation
20 Moores Road
Malvern, PA 19355

Professional: 800-233-8990
Consumer: 800-782-8777