

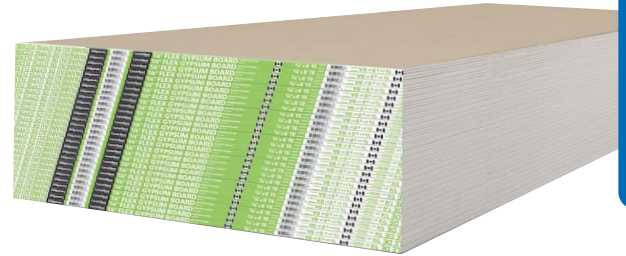


Job Name _____

Contractor _____

Date _____

Products Specified _____



1/4" Flex Drywall Panel

CertainTeed 1/4" Flex is a gypsum board specially designed for curved applications. Curved partitions and surfaces present an aesthetic alternative to conventional flat construction, enabling interior designers, building owners and home owners to create soft, innovative looks. CertainTeed 1/4" Flex provides the greater installation flexibility required to take the contour of frame placement. CertainTeed 1/4" Flex is composed of gypsum core enclosed in ivory-colored face paper and liner back paper. The gypsum is inherently non-combustible. The edges of the face side are slightly tapered for easy joint treatment.

BASIC USES

CertainTeed 1/4" Flex is ideal for curved staircases and ceilings as well as column enclosures in low and high-rise residences, sport facilities, schools, condominiums and office areas. Because it is lighter, CertainTeed 1/4" Flex is easier to install than other gypsum board products.

In many gypsum board applications, wetting or dampening methods had to be used to achieve desired curvatures. When using CertainTeed 1/4" Flex, minimum bending radii (as indicated on chart in this data sheet) can be achieved using proper dry installation methods (without wetting or dampening). For continuity, two layers of CertainTeed Flex's 1/4" (6.35 mm) thickness marries with adjacent constructions which commonly use 1/2" (12.7 mm) gypsum board. Under normal atmospheric conditions and changes, expansion and contraction of CertainTeed 1/4" Flex gypsum board is negligible.

ADVANTAGES

- High edge hardness.
- No wavy edges, warps, bows or deformities.
- Uniform high-strength cores eliminate crumbling, cracking.
- Edge tapers consistently to form perfect joints.
- GREENGUARD Gold Certified.

PRODUCT DATA

PROPERTIES	
Thickness	1/4" (6.4 mm)
Width	4' (1220 mm)
Length	8' (2440 mm), 12' (3660 mm)
Weight	1.0 lb/ft ² (4.9 kg/m ²)
Edges	Tapered
Packaging	Two pieces per bundle, face-to-face and end-taped.

Custom lengths may be available on special order. Consult your CertainTeed sales representative.

TECHNICAL DATA

APPLICABLE STANDARDS AND REFERENCE	
Product Standard	ASTM C1396
Installation Guidelines	ASTM C840 / GA-216
Finishing Guidelines	ASTM C840 / GA-214
Code References	International Building Code (IBC)
Code References	International Residential Code (IRC)
Code References	National Building Code of Canada (NBCC)

PHYSICAL PROPERTIES	1/4" (6.4 mm) FLEX	TEST METHOD
Nominal Width	4' (1220 mm)	-
Standard Lengths	8' (2440 mm), 12' (3660 mm)	-
Face Surface	Paper	-
Weight - lb/ft ² (kg/m ²)	1.0 lb/ft ² (4.9 kg/m ²)	-
Edge Profile	Tapered	
Surface Burning Characteristics - Flame Spread	15 (15)	ASTM E84 / UL 723 (CAN/ULC-S102)
Surface Burning Characteristics - Smoke Developed	0 (0)	ASTM E84 / UL 723 (CAN/ULC-S102)
Surface Burning Characteristics	Class A	ASTM E84 / UL 723 (CAN/ULC-S102)
Nail Pull	≥ 36 lbf (160 N)	ASTM C473 (Method B)
Core Hardness - End	≥ 11 lbf (49 N)	ASTM C473 (Method B)
Core Hardness - Edge	≥ 11 lbf (49 N)	ASTM C473 (Method B)
Flexural Strength - Parallel	≥ 16 lbf (71 N)	ASTM C473 (Method B)
Flexural Strength - Perpendicular	≥ 46 lbf (205 N)	ASTM C473 (Method B)
Humidified Deflection	N/A	ASTM C473

MINIMUM BENDING RADII	Board Applied Vertical (Parallel to Framing)		Board Applied Horizontal (Perpendicular to Framing)	
	min. bend radii	max. stud spacing	min. bend radii	max. stud spacing
Outside (convex) Dry	12" (300 mm)	6" (150 mm)	30" (760 mm)	9" (225 mm)
Inside (concave) Dry	20" (500 mm)	8" (200 mm)	30" (760 mm)	9" (225 mm)
Outside (convex) Wet	7" (175 mm)	5" (125 mm)	14" (360 mm)	6" (150 mm)
Inside (concave) Wet	10" (250 mm)	6" (150 mm)	20" (500 mm)	8" (200 mm)

INSTALLATION

LIMITATIONS

- Exposure to continuous moisture or extreme temperatures should be avoided. Not recommended for continuous exposure to temperatures exceeding 125°F (52°C).
- 1/4" Flex Drywall Panel is not recommended for ceiling applications.
- Ceiling framing spacing should not exceed 16" (406 mm) o.c.
- Wall framing spacing should not exceed 16" (406 mm) o.c.
- Store indoors and off ground surface.
- Panels should be stacked flat with care taken to prevent sagging or damage to edges, ends and surfaces.
- Storing panel lengthwise, leaning against the framing, is not recommended.
- Store indoors and off ground surface. Storage should be in accordance with the Gypsum Association GA-801, *Handling and Storage of Gypsum Panel Products*.
- Panels should be carried, not dragged, to place of installation to prevent damaging finished edges.
- Cutting and scoring should be done from the face side.
- In cold weather or during joint finishing, temperatures within the enclosure should stay within the range of 50° to 95°F (10° to 35°C) and with sufficient ventilation to carry off excess moisture.

DECORATION

CertainTeed® 1/4" Flex Drywall Panel accepts most types of paints, texture and wall covering materials. The surface shall be primed with a full-bodied latex primer before applying a final decorative material. This will equalize the suction between the joint compounds and the paper surface.

For best painting results, all surfaces, including joint compound, should be clean, dust-free and not glossy. If glossy paints are used, a thin skim coat of compound over the entire surface, Level 5 finish, is recommended to reduce highlighting or joint photographing. This method is also recommended for areas of critical sidelighting of natural or artificial light sources.

A sealer application under wallpaper or other wall covering is also recommended so the panel surface will not be damaged if the covering is subsequently removed during redecorating. Joint treatment must be thoroughly dry before proceeding with primer-sealer application and final decoration.

BIM/CAD INFORMATION

The BIM and CAD UL fire rated assemblies and sound assemblies can be found on CertainTeed's BIM and CAD Design Studio at bimlibrary.saint-gobain.com/certainteed. CertainTeed's BIM and CAD Design Studio provides BIM and CAD details to many UL fire rated assemblies and sound assemblies in easy to view experience. Plus, downloadable Revit and DWG and PDF CAD Details are available.

SUSTAINABILITY

Sustainable documentation, including recycled content, EPDs, HPDs, VOC Certifications, can be found at saintgobain.ecomedes.com.

NOTICE

The information in this document is subject to change without notice. CertainTeed assumes no responsibility for any errors that may inadvertently appear in this document.

For Fire Resistance, no warranty is made other than conformance to the standard under which the assembly was tested. Minor discrepancies may exist in the values of ratings, attributable to changes in materials and standards, as well as differences between testing facilities. Assemblies are listed as "combustible" (wood framing) and "noncombustible" (concrete and/or steel construction).

USGBC® and the related logo are trademarks owned by the U.S. Green Building Council® and are used with permission.



The Health Product Declaration* logo is a trademark or service mark of Health Product Declaration Collaborative, Inc., in the United States and in other countries and is being used herein under license.



CertainTeed Canada

CEILINGS • GYPSUM • INSULATION • ROOFING • SIDING • TRIM

2424 Lakeshore Rd. West, Mississauga, ON L5J 1K4 800-233-8990 certainteed.ca