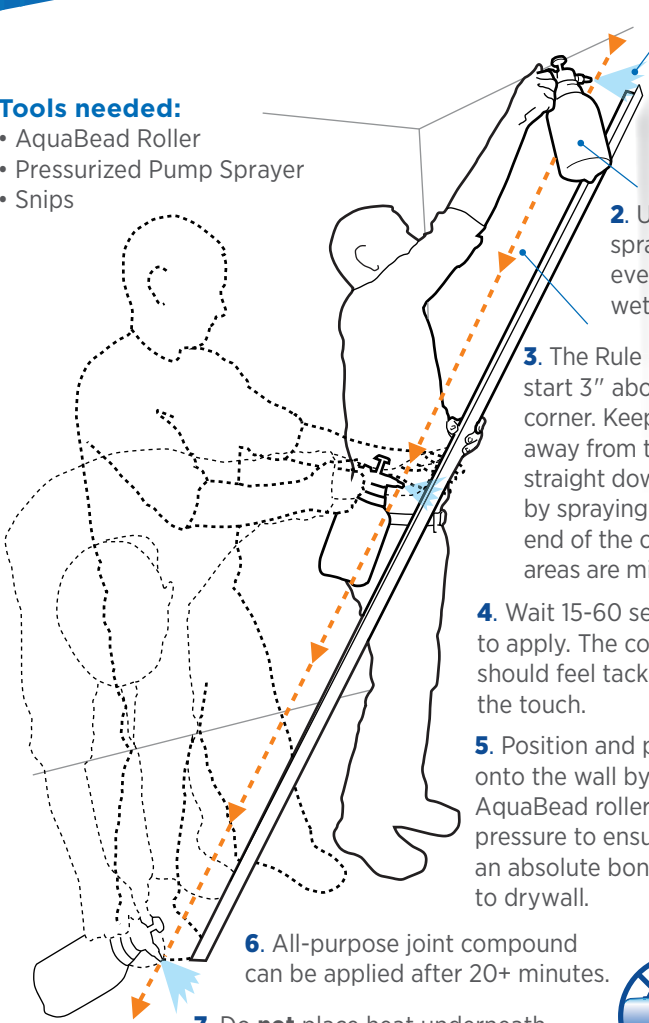


Important Application Steps

Tools needed:

- AquaBead Roller
- Pressurized Pump Sprayer
- Snips



1. Place cut corners at an angle against wall when spraying them so that excess water runs off.

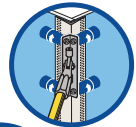
2. Use a pressurized sprayer to ensure even coverage when wetting corners.

3. The Rule of 3: When spraying, start 3" above the top of the corner. Keep the sprayer 3" away from the corner and spray straight down the middle. Finish by spraying at least 3" below the end of the corner so no areas are missed.

4. Wait 15-60 seconds to apply. The corner should feel tacky to the touch.



5. Position and press the corner onto the wall by hand. Use the AquaBead roller, applying solid pressure to ensure an absolute bond to drywall.



6. All-purpose joint compound can be applied after 20+ minutes.

7. Do **not** place heat underneath or close to the corners at any time.



For more information visit certainteed.com
or call 800-233-8990.