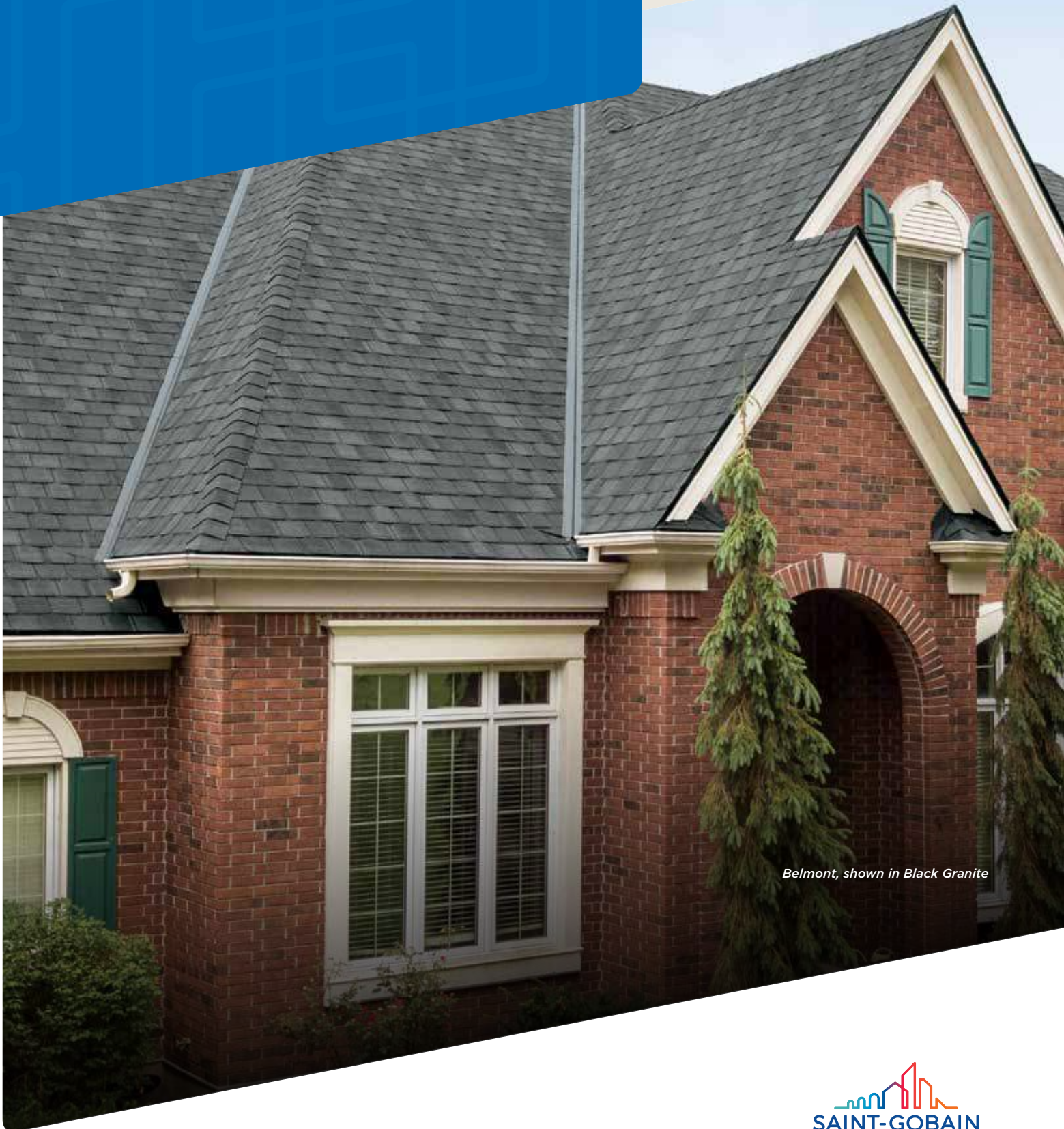


# Belmont<sup>®</sup>

Luxury Roofing Shingles

 **certainteed**  
SAINT-GOBAIN



*Belmont, shown in Black Granite*

  
SAINT-GOBAIN





**NOTE:** Due to limitations of printing reproduction, CertainTeed can not guarantee the identical match of the actual product color to the graphic representations throughout this publication.





# Designed to inspire.

# Engineered for strength.

The classic look of slate, masterfully replicated in high performing asphalt shingles.

Belmont® by CertainTeed puts luxury roofing well within your reach.

Ideal for homes with steep-sloped roofs where the aesthetic of slate is preferred.

The color palette includes deep blacks and grays and rich browns highlighted by shades of ochre, all with depth-enhancing shadow lines that provide authentic dimensionality.

Unlike slate, Belmont is virtually maintenance free and is backed by a lifetime-limited warranty.



## BELMONT COLOR PALETTE



Black Granite



Colonial Slate



Shenandoah





# Performs beautifully.

## BELMONT®

- Authentic depth & dimension of natural slate
- Dynamic color options
- All colors are available in an Impact Resistant version
- Superior resistance to fire and high winds



Scan code for  
more information



Stonegate Gray



Weathered Wood

# Strength with Style

## BELMONT®

- Class A fire resistance
- 110 MPH wind warranty, upgradable to 130 MPH
- Lifetime-limited warranty
- Class 3 impact resistant version (Belmont) or Class 4 impact resistant version (Belmont IR)



## SPECIFICATIONS

- Dimensions (overall): 18" x 36"
- Shingles/square: 48
- Bundle/square: 4
- Coverage: 96 sq. ft.
- Weather exposure: average 8"

CertainTeed products are tested to ensure the highest quality and comply with the following industry standards:

### Fire Resistance:

- UL Class A
- UL certified to meet ASTM D3018 Type 1

### Wind Resistance:

- UL certified to meet ASTM D3018 Type 1
- ASTM D3161 Class F

### Tear Resistance:

- UL certified to meet ASTM D3462
- CSA Standard A123.5

### Wind Driven Rain Resistance:

- Miami-Dade Product Control Acceptance (non-IR version only): Please reference [www.certainteed.com](http://www.certainteed.com) to determine approved products by manufacturing location

### Impact Resistance:

- All colors available in a version that meets UL2218 Class 3 or Class 4



## WARRANTY

- Lifetime limited transferable warranty against manufacturing defects on residential applications
- 50-year limited transferable warranty - group-owned or commercial\*
- 30-year **StreakFighter**® algae resistance warranty
- 10-year SureStart™ protection
- 15-year 110 MPH wind-resistance warranty
- Wind warranty upgrade to 130 MPH available. CertainTeed starter and CertainTeed hip & ridge required
- All colors are available in an Impact Resistant version

*See actual warranty for specific details and limitations.*





## Add a Little Accent to Your Roof

For a stylish finishing touch to cap hips and ridges, use Cedar Crest® accessory—available in colors to match your Belmont shingles.

## Color Companion Products for Low Slope Areas

With CertainTeed Flintlastic® SA, you can coordinate low slope areas like carports, canopies and porches with your main roof. Flintlastic SA is a self-adhering low slope roofing product available in colors that complement some of the most popular CertainTeed shingles.



## The Ultimate in Protection

### StreakFighter®

Algae Resistance

The ultimate in stain protection.

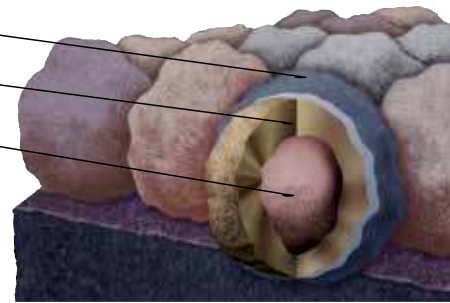
Those streaks you see on other roofs in your neighborhood? That's algae, and it's a common eyesore on roofing throughout North America. CertainTeed's **StreakFighter** technology uses the power of science to repel algae before it can take hold and spread. **StreakFighter's** granular blend includes naturally algae-resistant copper, helping your roof maintain its curb appeal and look beautiful for years to come.

Granule with StreakFighter Technology

Ceramic coating

Copper layer

Mineral core



*Diagram for illustrative purposes only.*

### CertaSeal®

Uplift Protection

**CertaSeal®** is a fast-activating modified asphalt sealant with a 20-year record of proven performance. Designed to seal shingles together upon installation, it protects roofs from wind uplift and shingle blow-off so that homes stay safe and dry. It's also engineered to remain flexible after installation, unlike harder sealants that can dry out and crack over time.



# Integrity Roof System™

A COMPLETE APPROACH TO LONG LASTING BEAUTY AND PERFORMANCE



With as much care as you take in selecting the right contractor, choosing the right roof system is equally as important. A CertainTeed Integrity Roof System combines key elements that help ensure you have a well-built roof for long-lasting performance.

## OUR RECOMMENDATION FOR MAXIMUM PERFORMANCE\*

- 1. Waterproofing Underlayment**  
Grace Vycor Ice and Water Shield®  
Grace Vycor Ice and Water Shield® HT
- 2. Water-Resistant Underlayment**  
DiamondDeck®
- 3. Starter Shingles**  
High-Performance Starter
- 4. Shingles**  
Belmont®
- 5. Ventilation**  
CertainTeed® Ridge Vent  
CertainTeed® Rolled Ridge Vent  
CertainTeed® Intake Vent
- 6. Hip & Ridge Caps**  
Shangle® Ridge or Cedar Crest®

\*There are other possible product combinations that create peace of mind and offer exceptional beauty. For a complete list of qualifying products, learn more at:

[certainteed.com/roofing](https://certainteed.com/roofing)



### CertainTeed

Ceilings • Gypsum • Insulation • Roofing • Siding • Trim  
20 Moores Road, Malvern, PA 19355 | 800-233-8990 | [certainteed.com](https://certainteed.com)

©01/25 CertainTeed, Printed in the USA, Code No. 00-00-567-NA-EN