

# CertainTeed

## Exterior Soffit

### Type X and Type C Gypsum Board

#### Product Data and Submittal

#### Product Description

CertainTeed Exterior Soffit Type X and CertainTeed Exterior Soffit Type C Gypsum Boards are used for the underside of eaves, carport ceilings, canopies and other commercial and residential exterior applications with indirect exposure to the weather. CertainTeed Soffit Type X and Type C Board have a specially formulated core for use in fire resistance-rated designs. Both types consist of a solid set gypsum core covered with durable water resistant backing paper and are available in a variety of lengths.

#### Basic Uses

CertainTeed Exterior Soffit Type X and CertainTeed Exterior Soffit Board Type C Boards are commonly used for commercial applications such as ceilings for covered walkways and malls, large canopies and parking areas, and for residential applications such as open porches, breezeways, carports and exterior soffits.

#### Advantages

- Ideal for indirect exposure to the weather
- Uniform high-strength cores eliminate crumbling, cracking.
- Edge tapers consistent to form perfect joints.

- Uniformly flat, attractive appearance; no shadows.
- Can be scored and snapped to exact size without cutting or sawing.
- Consistently high quality.
- High edge hardness.
- No wavy edges, warps, bows or deformities.

#### Limitations

- Exposure to continuous moisture or extreme temperatures should be avoided. Not recommended for continuous exposure to temperatures exceeding 125° F (52° C).
- Framing spacing should not exceed 24" (610 mm) o.c. for 5/8" CertainTeed Soffit Type X and Type C Board.
- Store indoors and off ground surface.
- Boards should be stacked flat with care taken to prevent sagging or damage to edges, ends and surfaces.
- Storing board lengthwise leaning against the framing is not recommended.
- Boards should be carried, not dragged, to place of installation to prevent damaging finished edges.
- Suitable fascias and moldings should be provided around the perimeter to protect the board from direct exposure to water.

- Board edges should be placed no less than 1/4" (6.4 mm) away from abutting vertical surfaces.
- Where CertainTeed Soffit Boards are applied directly to joists or rafters, vents are required at the end of each joist space.

#### Product Data

**Thicknesses:** 5/8" (15.9 mm)

Type X / Type C

**Widths:** 4' (1220 mm) standard

**Lengths:** 8' to 12' (2440 mm to 3660 mm) standard

**Edges:** Tapered

**Packaging:** Two pieces per bundle, face-to-face and end-taped

Special widths, lengths or edges may be available on special order. Consult your CertainTeed sales representative.

#### Technical Data

##### Composition and Materials

CertainTeed Exterior Soffit Type X and Type C Boards are manufactured panels with gypsum cores, covered with durable, water-resistant backing paper. They also contain various aggregates to enhance their fire-resistive qualities.

Continued on back

Job Name

Contractor

Date

Products Specified:

Submittal Approvals  
(Stamps or Signatures)

**CertainTeed**  
SAINT-GOBAIN

## Surface Burning Characteristics

All CertainTeed Exterior Soffit Type X and Type C Boards have a Flame Spread rating of 15 and Smoke Developed rating of 0, in accordance with ASTM E84. (UL 723, NFPA 255, CAN/ULC-S102)

## Fire Resistance

Fire resistance tests are conducted in accordance with ASTM E119, (ANSI/UL 263, NFPA 251, CAN/ULC-S101) and no warranty is made other than conformance to the standard under which the assembly was tested. Minor discrepancies may exist in the values of ratings, attributable to changes in materials and standards, as well as differences between testing facilities. Assemblies are listed as "combustible" (wood framing) and "noncombustible" (concrete and/or steel construction). CertainTeed Exterior Soffit Type X and Type C Board Boards are classified by Underwriters Laboratories Inc. for USA and Canada and carry the UL label for inclusion in one, two and three hour rated fire resistance assemblies. Underwriters Laboratories tests have proven that joint finishing is not required for the rating in certain assemblies. For fire resistance ratings, refer to the Gypsum Association Fire Resistance Design Manual GA-600 and UL Fire Resistance Directory-Vol. 1.

## Applicable Standards and References

- CertainTeed Exterior Soffit Type X and Type C Boards meet ASTM C1396 and ASTM C931 Type X standards.
- ASTM C840 Gypsum Association
- GA-216 ICC International Building Code (IBC)

## Installation

### Decoration

Exposed areas of CertainTeed Soffit Board shall be sealed with exterior primer and one coat of exterior paint; other procedures are the same as interior ceiling installation.

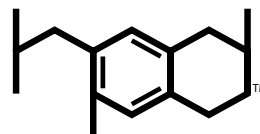
### Recommendations

Installation of CertainTeed Exterior Soffit Type X and Type C Board should be consistent with methods described in the standards and references noted. Soffit Boards must be horizontal or sloping downward away from building. Framing should be no more than 24" (610 mm) o.c. Suitable fascias and moldings should be provided around the perimeter to protect the Soffit Board from direct exposure to water.

## Notice

The information in this document is subject to change without notice. CertainTeed assumes no responsibility for any errors that may inadvertently appear in this document.

***Exterior Soffit Type C manufactured at Nashville, AR plant only.  
Limited availability.***



### Health Product DECLARATION

The Health Product Declaration™ and logo is owned by the Health Product Declaration Collaborative™ and is used with permission.



## ASK ABOUT ALL OF OUR OTHER CERTAINTEED® PRODUCTS AND SYSTEMS:

ROOFING • SIDING • TRIM • DECKING • RAILING • FENCE  
GYPSUM • CEILINGS • INSULATION

[www.certainteed.com](http://www.certainteed.com) <http://blog.certainteed.com>

CertainTeed Corporation  
20 Moores Road  
Malvern, PA 19355

Professional: 800-233-8990  
Consumer: 800-782-8777

© 11-2007 CertainTeed Gypsum, Inc. Rev 01-2016  
Printed in U.S.A. on recycled paper. CTG-2342/2M

