



FINISHING PRODUCTS

CertainTeed Finishing Products



CertainTeed is a complete system of finishing products, specially developed to meet the demands of drywall professionals. The result is a professional-grade performance that minimizes callbacks improves profitability.

CertainTeed packages are color-coded to make it easy to pick the right CertainTeed product for your application.

READY-MIXED JOINT COMPOUNDS

CertainTeed Joint Compounds are pre-mixed high performance products designed for professional applicators. These products meet ASTM C475 Standard.

Lightweight



- CertainTeed Lite Taping**
Code: 640008
 3.5 gal / 13.2 L
- Ready-Mixed Joint Compound
 - For embedding wallboard tape and trims
 - Excellent adhesion



- CertainTeed Lite All-Purpose**
Code: 640011
 3.5 gal / 13.2 L
- Ready-Mixed Joint Compound
 - Tape / Fill / Finish - Designed for all phases of drywall finishing
 - Low shrinkage



- CertainTeed Lite Topping**
Code: 640009
 3.5 gal / 13.2 L
- Ready-Mixed Joint Compound
 - Designed for finish coats
 - Low shrinkage



- CertainTeed EXTRA All-Purpose**
Code: 640031
 3.5 gal / 13.2 L
- Ready-Mixed Joint Compound
 - Designed for all phases of drywall finishing
 - Low shrinkage
 - Not available in all regions



- CertainTeed Lite All-Purpose**
Code: 640012
 1 gal / 3.8 L
Code: 640007
 4.5 gal / 17 L
- Ready-Mixed Joint Compound
 - Tape / Fill / Finish - Designed for all phases of drywall finishing
 - Low shrinkage

Heavyweight



- CertainTeed Taping**
Code: 640001
 45 lb / 20.4 kg
- Ready-Mixed Joint Compound
 - For embedding wallboard tape and trims
 - Superior adhesion



- CertainTeed All-Purpose**
Code: 640002
 48 lb / 21.8 kg
- Ready-Mixed Joint Compound
 - Tape / Fill / Finish - Designed for all phases of drywall finishing



- CertainTeed Topping**
Code: 640000
 48 lb / 21.8 kg
- Ready-Mixed Joint Compound
 - Designed for finish coats
 - Excellent for skim coating



- CertainTeed All-Purpose**
Code: 640004
 62 lb / 21.8 kg
- Ready-Mixed Joint Compound
 - Tape / Fill / Finish - Designed for all phases of drywall finishing



- CertainTeed EXTREME All-Purpose**
Code: 640892
 3.5 US Gal. / 13.2 L
- High Performance Ready-Mixed
 - Designed for tape, fill and finish coats
 - Extreme Moisture and Mold Resistance
 - Formulated to work with M2Tech® and GlasRoc® Interior drywall

Midweight



CertainTeed ONE Multi-Purpose

Code: 640010

3.5 gal / 13.2 L

- Ready-Mixed Joint Compound
- Tape / Fill / Finish - Designed for all phases of drywall finishing
- Can be used for skim coating and simple texturing

EASI-FIL® RETAIL COMPOUNDS

Easi-Fil® All-Purpose Joint Compounds are pre-mixed, air drying, easy-to-use products for any drywall job. Use them to embed paper tape, conceal and finish joints, fasteners and trim accessories. Easi-Fil® compounds come in varying sizes for any job.



Easi-Fil Dust Away

Code: 640520

1 US Gal / 3.8 L

- When sanded, dust clumps and falls directly to the floor
- General purpose formula for filling, repairing and finishing
- Ideal for areas where cleanliness is required

Easi-Fil® Setting Powders are chemically setting compounds that set in a prescribed time for fast fills and repairs. They have a higher bond strength than air drying compound.



Easi-Fil Light Repair 20

Code: 640032

2.76 lb / 1.25 kg

- Setting Compound
- Filling and finishing drywall joints, trims and fasteners
- Easy to sand when dry
- Sets in 20 minutes



Easi-Fil Heavy Repair 90

Code: 640033

4.4 lb / 2 kg

- Setting Compound
- Heavy fills and repairs
- Hard surface, difficult to sand
- Sets in 90 minutes

THE CERTAINTEED M2TECH® SYSTEM

M2Tech systems protect against moisture and mold in a lower cost system solution versus paperless products. These systems promote healthy indoor air quality when used in new construction and renovations over wood or steel framing in dry areas or areas with limited water exposure.



SANDABLE SETTING POWDERS

CertainTeed LITE Sand PLUS Setting Compounds are lightweight sandable chemically setting powders used to prefill joints, embed joint tape and conceal joints, fasteners and trim accessories on gypsum wallboard. They can also be used for interior patching and repair. They are ideal for heavy fills because they are specially formulated to harden with very little shrinkage in a prescribed time frame. Setting times are available from 5 minutes to 210 minutes.



CertainTeed LITE Sand PLUS Setting Compounds

18 lb / 8.1 kg

- Lightweight
- Chemical hardening
- Low shrinkage
- Sandable when dry



LITE Sand PLUS 5

Code: 640602

LITE Sand PLUS 20

Code: 640574

LITE Sand PLUS 45

Code: 640576

LITE Sand PLUS 90

Code: 640594



CertainTeed M2Tech 90 Setting Compound

Code: 640034

18 lb / 8.1 kg

- Moisture and mold resistant
- Lightweight
- Chemical hardening
- Low shrinkage
- Sandable when dry

HEAVYWEIGHT SETTING POWDER

CertainTeed Super Set 45 Setting Compound is a heavyweight, sandable, chemically setting powder that is used to prefill joints, embed joint tape and conceal joints, fasteners and trim accessories on gypsum wallboard. It can also be used for interior patching and repair. It is ideal for heavy fills because it is specially formulated to harden with very little shrinkage in the prescribed time frame of 45-55 minutes.



CertainTeed Super Set 45 Setting Compound

Code: 642644

25 lb / 11.3 kg

- Heavyweight Setting Compound
- Smooth mixing
- Low shrinkage
- Sandable
- Good mileage

WALL AND CEILING SPRAY TEXTURES

CertainTeed Wall and Ceiling Spray Textures provide a decorative appearance over gypsum panels and most other interior wall and ceiling surfaces. They are formulated to provide for a variety of decorative options including splatter, knockdown and orange peel designs.



CertainTeed Wall and Ceiling Texture (Red)

Code: 640519

50 lb / 22.6 kg

- Suitable for orange peel to knock down texture patterns
- Tough, durable finish
- Excellent mileage
- Unaggregated



CertainTeed Wall and Ceiling Texture (Blue)

Code: 640526

50 lb / 22.6 kg

- Easy mixing
- Good mileage
- Light to medium texture patterns
- Unaggregated



CertainTeed Easi-Tex Spray Texture

Code: 640005

48 lb / 21.8 kg

- Dust free and pre-mixed
- Harder and more durable finish
- Suitable for all spray patterns and equipment
- Unaggregated

JOINT REINFORCEMENT TAPE

CertainTeed Marco® Spark-Perf® Joint Reinforcement Tape is a spark perforated paper tape designed for use with ready-mix joint compound to reinforce gypsum board joints and corners.



CertainTeed Marco Spark-Perf Paper Tape

500' x 10 rolls Code: 639341

250' x 20 rolls Code: 639337

75' x 20 rolls Code: 639338

- Spark-perforated for elimination of air bubbles
- Manufactured from fibered-paper with added tensile strength to help prevent tearing, wrinkling or stretching
- Machine roughed for superior bonding



FibaFuse™ Paperless Drywall Tape

2-1/16" x 250' Code: 406479

- Compatible with mold resistant wallboard
- Stronger than paper tape
- Perfect "10" rating on ASTM D3273 mold test
- For use with setting compounds



CertainTeed Marco Spark-Perf 94# Heavy Weight Paper Tape

Code: 639535

500' x 10 rolls

- Heavy weight drywall tape
- Spark-perforated for elimination of air bubbles
- Manufactured from fibered-paper with added tensile strength to help prevent tearing, wrinkling or stretching
- Machine roughed for superior bonding

COATINGS

CertainTeed coatings are high performance surfacers that efficiently bring high levels of finishing.



CertainTeed Level V Roll-On Wall and Ceiling Primer/Surfacer

Code: 405374

18.9 L / 5 US Gal.

- Takes a level 4 finish to level 5
- Designed for easy roller or spray application
- Eliminates putty or skim coating by hand
- Can be sanded but not necessary



CertainTeed Quick Prep Interior Prep Coat/Primer

Code: 405507

5 gal / 18.9 L

- Uniforms porosities between gypsum paper and joints
- Designed for easy roller or spray application
- Sandable



CertainTeed Quick Prep +PLUS Interior Prep Coat/Primer

Code: 405774

5 gal / 18.9 L

- For use in lieu of skim coat
- Uniforms porosities between gypsum paper and joints
- Meets specification for GA 214 and ASTM C840



CertainTeed Vapor Prime

Code: 408186

5 gal / 18.9 L

- Semi-permeable vapor retarder
- Apply with airless sprayer
- No thinning necessary
- Low VOC product



CertainTeed Extreme Texture Coat

Code: 405593

5 gal / 18.9 L

- Highly durable and scrubbable
- Not abrasive to skin
- Mold resistant
- Highest possible score for mold resistance under ASTM 3273



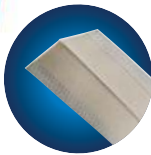
Structural Laminate Drywall Corner System

The NO-COAT® Structural Laminate (SLAM®) design represents a revolutionary drywall corner system that provides superior strength and durability, installs faster, and delivers bottom line savings in labor.

NO-COAT structural laminate corners abandon corner bead design entirely. Instead, the SLAM design integrates new technologies and materials like dimensionally extruded copolymer plastic and formulated saturated paper. The result is a corner system that outperforms all others in the market.

NO-COAT® FLEXIBLE DRYWALL CORNERS

NO-COAT flex roll products are ideal for off-angle applications, both short and long runs. Wide flange covers large gaps and poor framing. Built-in flexible hinge fits any inside or outside corner angle and creates crisp, straight lines. Creating perfect looking corners that will stand the test of time is simple with these two options from CertainTeed. Each one is easy to apply and produces a strong, uniform surface every time. They won't blister, bubble, dent or crack and the surface paper is ideal for applying paint or texture.



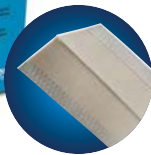
CertainTeed NO-COAT Flexible Corner 325

Code: 639586

100' x 3-1/8" - 10 rolls per case or individual rolls

NO-COAT Flexible Corner 325 offers the same durability and strength as Flexible Corner 450, with a narrower flange width that makes it ideal for shorter off-angle spans.

- Finishes short run off-angles of any length with straight, precise lines
- Built-in flexible hinge forms to any inside or outside corner angle
- Flange width hides irregular framing
- SLAM corner design ensures strength, durability, labor savings and eliminates costly callbacks



CertainTeed NO-COAT Flexible Corner 450

Code: 639585

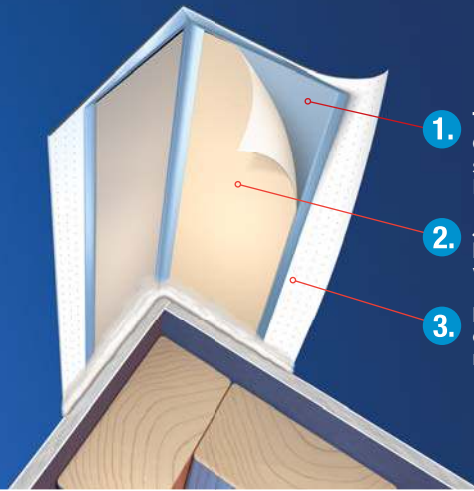
100' x 4-1/5" - 4 rolls per case or individual rolls

The world's #1 flex product has earned the reputation for delivering perfectly straight lines for challenging off-angles and long spans, while withstanding settling, shrinking lumber, seismic movements and temperature variations.

- Extra stiff profile provides easy application for long spans
- Wide flange covers large gaps and poor framing
- Built-in flexible hinge adjusts to fit any inside or outside corner angle
- SLAM corner design ensures strength, durability, labor savings and eliminates costly callbacks

SLAM Technology integrates **THREE KEY COMPONENTS** providing the durability, flexibility, and strength that won't crack under pressure.

Made With
SLAM
TECHNOLOGY®



- 1. TAPERED HIGH STRENGTH COPOLYMER CORE** withstands severe impacts. Won't rust. Requires less mud.
- 2. JOINT TAPE** permanently bonds corner to drywall with All Purpose mud.
- 3. FORMULATED SURFACE PAPER** eliminates cracks, chips and peels, resists abrasion, and accepts any finish.

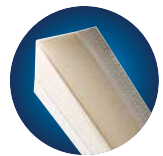
NO-COAT® DRYWALL CORNER STICKS

Optimal strength and performance for the toughest, straightest edge! NO-COAT easy-to-install stick lengths deliver perfect corners in record time. Mud applied, extra tough drywall corners that withstand severe impacts and settling. Won't blister, bubble or edge crack. Apply with CertainTeed tools for high speed installations and flawless results. Available in Outside and Inside 90°, 3/8" and 3/4" Bullnose, 1/2" and 5/8" L-Trim and Arch profiles.



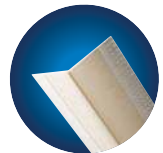
CertainTeed NO-COAT Outside 90

Outside 90° - 8' - Code: 640665
Outside 90° - 9' - Code: 640666
Outside 90° - 10' - Code: 640667
Outside 90° - 12' - Code: 640668



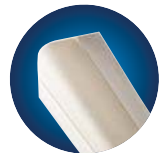
CertainTeed NO-COAT Inside 90

Inside 90° - 8' - Code: 640661
Inside 90° - 9' - Code: 640662
Inside 90° - 10' - Code: 640663



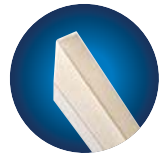
CertainTeed NO-COAT Bullnose

Bullnose 3/8" - 8' - Code: 639613
Bullnose 3/8" - 9' - Code: 639614
Bullnose 3/8" - 10' - Code: 639615
Bullnose 3/8" - 12' - Code: 640669



CertainTeed NO-COAT L-Trim

L-Trim 1/2" - 10' - Code: 640670
L-Trim 5/8" - 10' - Code: 640671



CertainTeed NO-COAT Arch

Arch Bullnose 3/4" - 10' - Code: 639612
Arch Outside 90° - 10' - Code: 640655



NO-COAT® PRO AUTOMATED DRYWALL CORNER SYSTEM

The NO-COAT PRO Automated Drywall Corner System — consisting of NO-COAT PRO and NO-COAT PRO CORNER — produces ready-to-install drywall corners with joint compound applied to any angle and cut to any length. The fastest and most efficient cornering system available.



CertainTeed NO-COAT PRO CORNER

Code: 640653

250' x 3-3/4" - 1 roll

NO-COAT PRO CORNER flexible roll product is ideal for production work, long columns and soffits. When used with the NO-COAT PRO machine, production time is dramatically reduced, and waste is virtually eliminated.

- Extra stiff profile provides easy application for long spans
- Wide flange covers large gaps and poor framing
- Built-in flexible hinge adjusts to fit any inside or outside corner angle
- SLAM corner design ensures strength, durability, labor savings and eliminates costly callbacks

CertainTeed NO-COAT PRO

The NO-COAT PRO machine is the first and only automated system for custom cutting corners of any length or angle. Its lightweight portability makes it easy to move on the jobsite. Used in conjunction with NO-COAT PRO CORNER, it is simply the fastest and most efficient cornering system available.

Code: 405331

- Outside 90° corners and long spans of any angle
- Portable size is light-weight and easy to maneuver
- Replaces pre-cut stick lengths and roll products with one simple 250' (76.2 m) roll
- Easy-to-use keypad simplifies operation and stores custom measurements
- 5 gallon (19 L) hopper is easy-to-fill, clean and cap for overnight mud storage

Replaces pre-cut stick lengths and roll products with one simple 250' (76.2 m) roll.



Powered by convenient 110 volts

5 gallon (19L) hopper is easy-to-fill, clean and cap for overnight mud storage

Easy-to-use trilingual keypad simplifies operation and stores custom measurements

35 lb without the hopper. Fits in a gang box.



INSIDE 90



OUTSIDE 90



OFF-ANGLES

Comes with handy remote control.



LEVELLINE® DRYWALL CORNER

LEVELLINE flexible rolls are ideal for off-angle applications, both short and long runs. Wide flange covers large gaps and poor framing. The built-in flexible hinge fits any inside or outside corner angle and creates crisp, straight lines.



CertainTeed LEVELLINE Flexible Rolls

Code: 640656

100' x 2-3/4" - 12 roll case or individual rolls

- Finishes short runs and off-angles—of less than 3 m (10')—with straight, precise lines
- Built-in flexible hinge forms to any inside or outside corner angle
- Flange width hides irregular framing



AQUABEAD® WATER-ACTIVATED DRYWALL CORNER

Water-activated AquaBead offers fast, easy installation and outstanding performance, every time.

CertainTeed AquaBead corner products are quick and easy — just spray with water and press. No messy compound or spray adhesive required. They can be coated within 30 minutes for quicker finishing. Robust paper-polymer-paper design withstands impacts and movement to prevent dents and edge cracking.

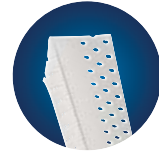


CertainTeed AquaBead Outside 90

Outside 90°-8' - Code: 639662

Outside 90°-9' - Code: 639661

Outside 90°-10' - Code: 639663



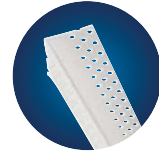
CertainTeed AquaBead Outside 90 TRIM

Outside 90° TRIM-8' - Code: 640742

Outside 90° TRIM-9' - Code: 640743

Outside 90° TRIM-10' - Code: 640744

Outside 90° TRIM-12' - Code: 640745



CertainTeed AquaBead Bullnose

Bullnose-8' - Code: 639666

Bullnose-9' - Code: 639665

Bullnose-10' - Code: 639660



CertainTeed AquaBead L-Trim

L-Trim 1/2" - 10' - Code: 639664

L-Trim 5/8" - 10' - Code: 639872



AquaBead®

- ✓ Water activated adhesive
- ✓ Simple to apply
- ✓ Superior bonding
- ✓ No nails, compound or spray glue required
- ✓ Easy to cut
- ✓ Won't rust or crack
- ✓ Lightweight for easy handling
- ✓ Impact resistant

Specially engineered nose does not require coating. Just fill the outside edges with joint compound to create the perfect corner.

Water-activated adhesive provides a superior bond directly to drywall

Perforations allow compound to adhere to the drywall surface

DRYWALL CORNER TOOLS

CertainTeed NO-COAT® Rollers

CertainTeed rollers press corners firmly and accurately into place, creating an absolute bond to the drywall. Drywall corner installations are faster and easier, delivering bottom-line savings on labor and mud.

- Ensures high speed, accurate installations
- Squeezes out excess mud
- Taper matches exact corner profile for the maximum bond with the minimum amount of mud
- Highly durable. Stainless steel components provide extreme corrosion resistance
- Stainless steel rollers with Nylatron and brass bushings
- Stainless steel frame and hardware



Outside 90
Code: 640677



Inside 90
Code: 640679



Bullnose
Code: 639616



One Sided
Code: 640678



NO-COAT PRO
Code: 640675

CertainTeed AquaBead® Rollers

CertainTeed AquaBead Rollers allow for high speed installations and flawless results

- Ensures high speed, accurate installations
- Squeezes out excess mud
- Taper matches exact corner profile for the maximum bond with the minimum amount of mud
- Pliable roller wheels. Highly durable.



Outside 90°
Code: 405325



Bullnose
Code: 405326

CertainTeed Double Barrel Hopper®

Works with inside, outside and bullnose stick corners and flexible corners.

Code: 640676

- Eliminates part changes or reconfigurations
- Ensures a uniform, high-speed installation
- Single piece gates with ergonomic hand knob allow for fast and easy adjustments
- High density polyurethane tank and gate controllers
- Stainless steel reservoir trough and gates



TECHNICAL INFORMATION

Technical References

For additional information on the application and finishing of CertainTeed Joint Compounds please consult Safety Data Sheet or consult manufacturer.

Site Conditions

The room temperature should be maintained at 50°F (10°C) for 48 hours prior to application and continuously thereafter until completely dry. Gypsum wallboard should be dry for at least 48 hours before the application of joint compounds. Continuous ventilation must be provided to ensure proper drying. When using temporary heating, care should be taken to avoid overheating and high humidity.

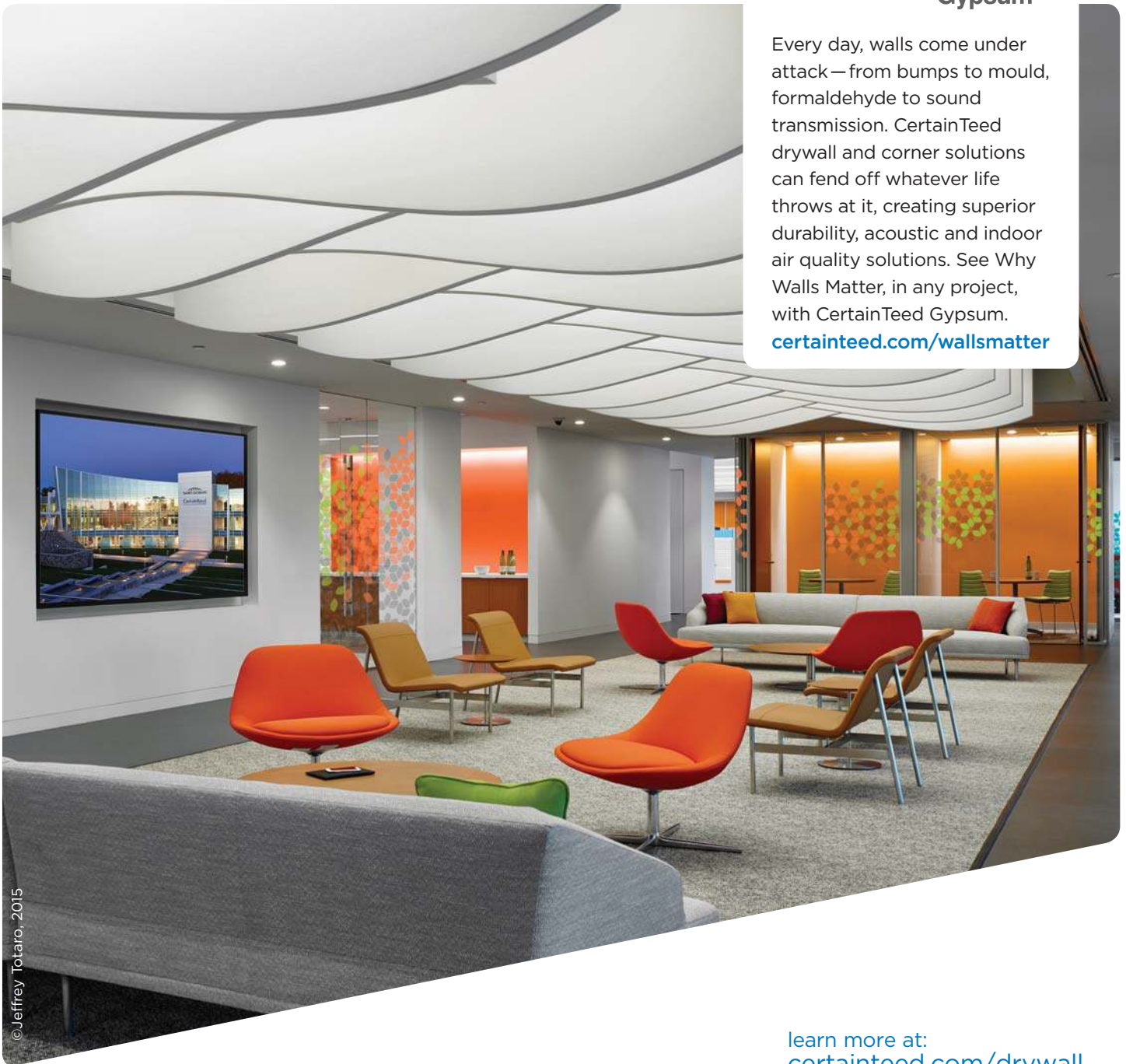
Warranty

www.certainteed.com/warranty

Gypsum

Every day, walls come under attack—from bumps to mould, formaldehyde to sound transmission. CertainTeed drywall and corner solutions can fend off whatever life throws at it, creating superior durability, acoustic and indoor air quality solutions. See Why Walls Matter, in any project, with CertainTeed Gypsum.

certainteed.com/wallsmatter



©Jeffrey Totaro, 2015

learn more at:
certainteed.com/drywall



CertainTeed Corporation

CEILINGS • DECKING • FENCE • GYPSUM • INSULATION • RAILING • ROOFING • SIDING • TRIM

20 Moores Road Malvern, PA 19355 Professional: 800-233-8990 Consumer: 800-782-8777 certainteed.com

