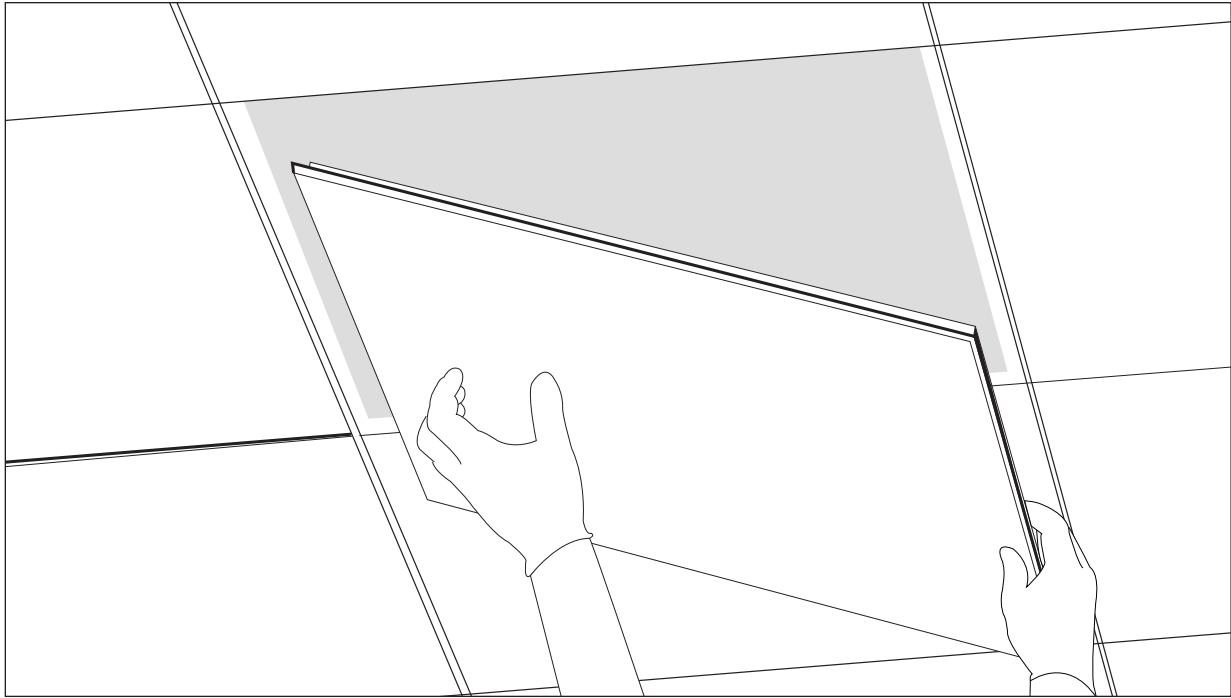
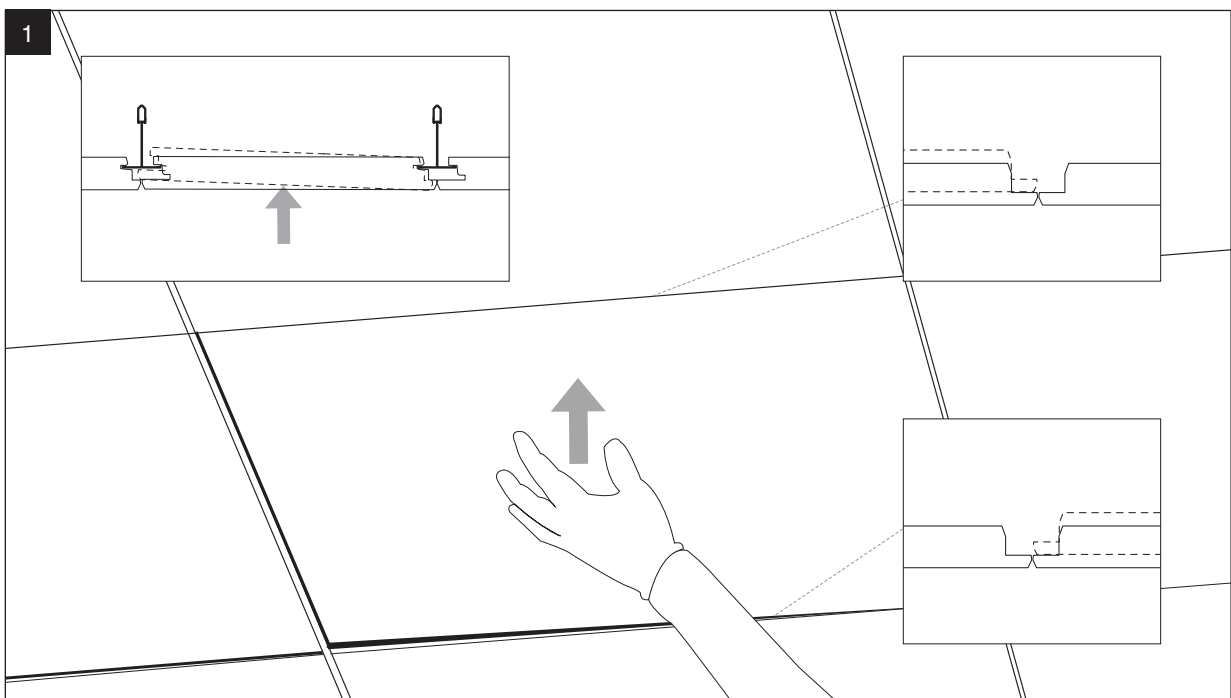


# ECOPHON® Focus™ Ds Accessibility Installation Manual

Read the entire manual before installing.



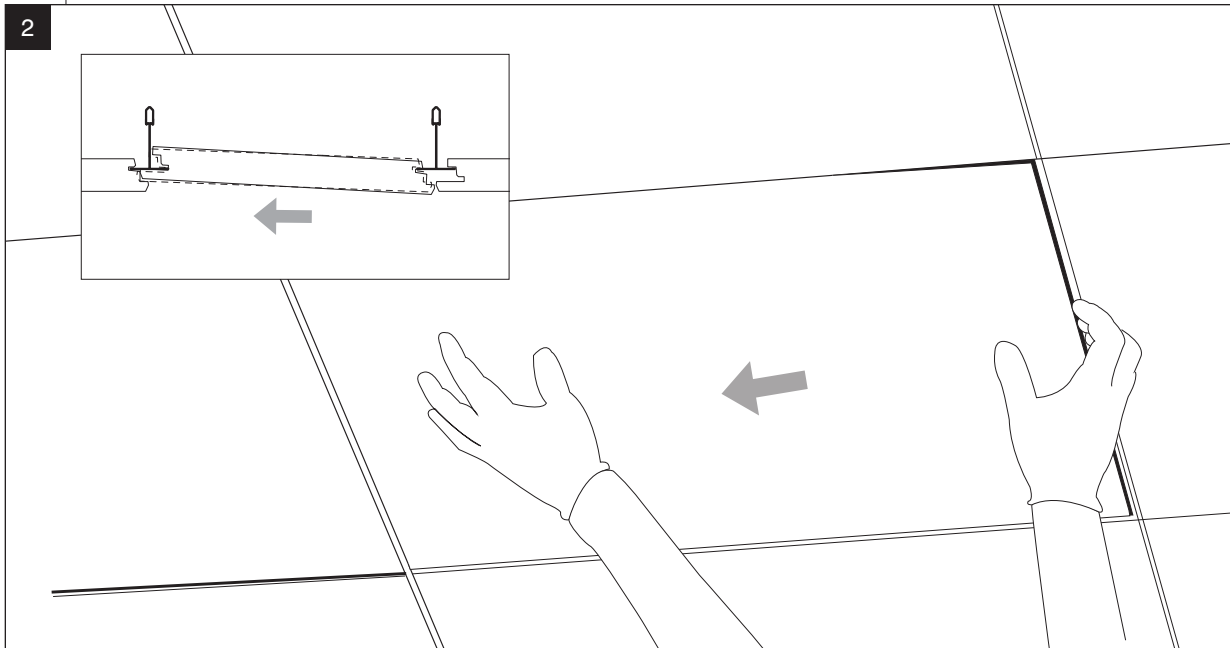
To remove CertainTeed Ceilings Ecophon Focus Ds panels, use clean white cotton gloves and follow the directions. Larger panels may require two people.



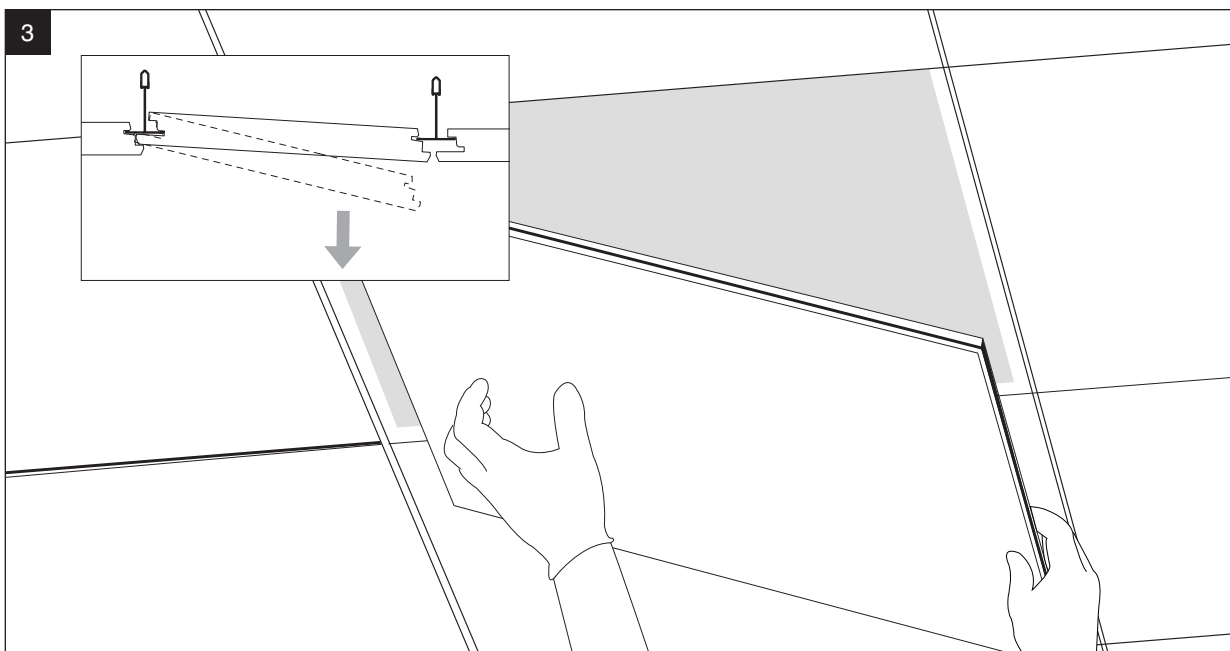
Place your hand on the center of the panel and gently push up to disengage the panel.

**Note:** One edge will disengage higher than the other 3 sides.

# Installation for Ecophon® Focus™ Ds Panel Accessibility



While keeping upward pressure, gently slide the panel toward the edge that has disengaged.



The panel will disengage as illustrated.

## ASK ABOUT ALL OF OUR OTHER CERTAINTEED® PRODUCTS AND SYSTEMS:

ROOFING • SIDING • TRIM • DECKING • RAILING • FENCE  
GYPSUM • CEILINGS • INSULATION

[www.certainteed.com/ceilings](http://www.certainteed.com/ceilings)

CertainTeed Corporation  
20 Moores Road  
Malvern, PA 19355

Professional: 800-233-8990  
Consumer: 800-782-8777

© 2/14 CertainTeed Corporation  
CTC-02-124