

Gyptone® BIG Access Panel

INSTALLATION MANUAL

Design & Specifications

Use of the Product

Gyptone BIG Access Panel is fully integrated in the ceiling surface and allows for quick and easy access to technical installations.

Construction height

When demounting the Access Panel from the ceiling, the minimum plenum height necessary is 5-inches.

Surfaces

The gypsum surface is intended to be painted after installation. Paint application must be made with a short nap roller (1/4" recommended). **DO NOT SPRAY PAINT PANELS** as it will substantially impair the acoustic performance.

It is recommended to paint the edges of both the access panels and the openings in the Gyptone ceiling. A high gloss paint is recommended in order to increase durability of the interface.

Dimensions

Access Panel including frame =
605 x 605 mm (≈24" X 24")

Opening measurement =
510 x 510 mm (≈20" X 20").

Types

Gyptone Access Panels suit all Gyptone BIG products in modular size 1200 X 2400 mm (≈ 48" X 94.5"):

- Gyptone BIG Line 6
- Gyptone BIG Quattro 41
- Gyptone BIG Quattro 46
- Gyptone BIG Sixto 63.

Dimensional Stability

Gyptone BIG is to be installed and used in rooms with relative humidity not exceeding 70% or temperatures exceeding 104 degrees F.

Weight

Frame = 0.9 kg (≈ 2 lb.)

Access Panel = approx. 3.6 kg (≈ 8 lb.)

Cleaning

Can be cleaned with a damp cloth, depending on the final surface treatment. Do not use detergents.

Maintenance

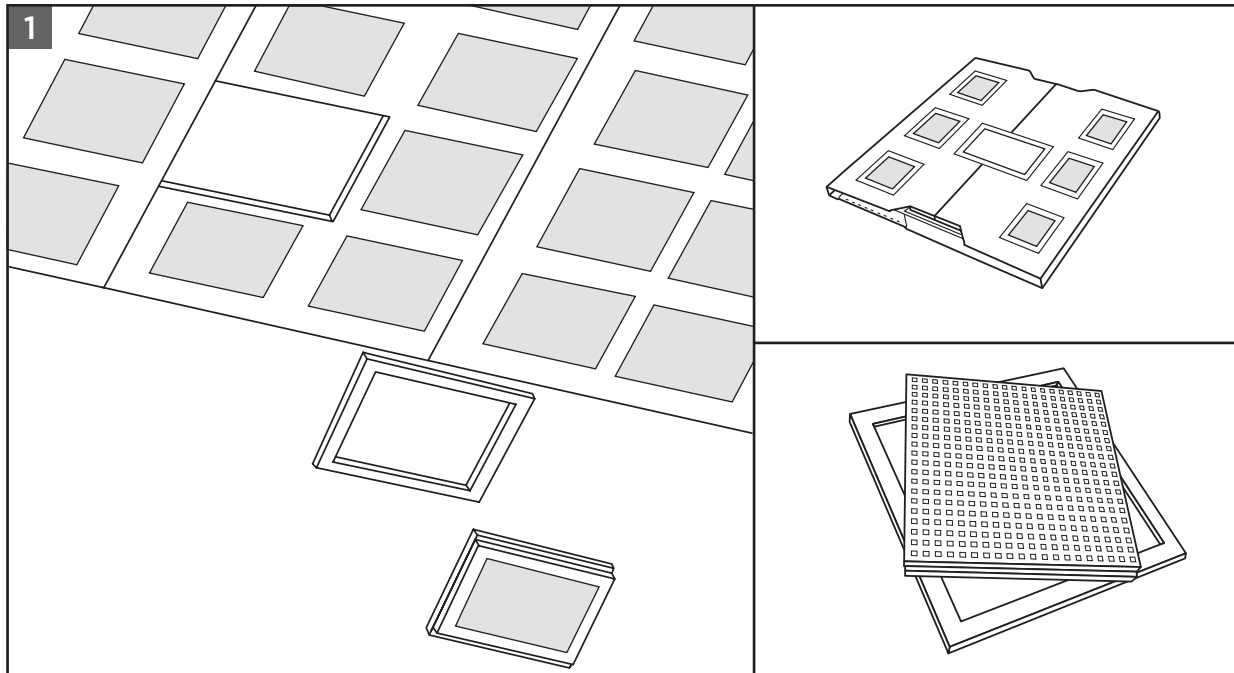
Damages on edges or surfaces can be repaired by filling with joint compound and painting.

Fire Performance

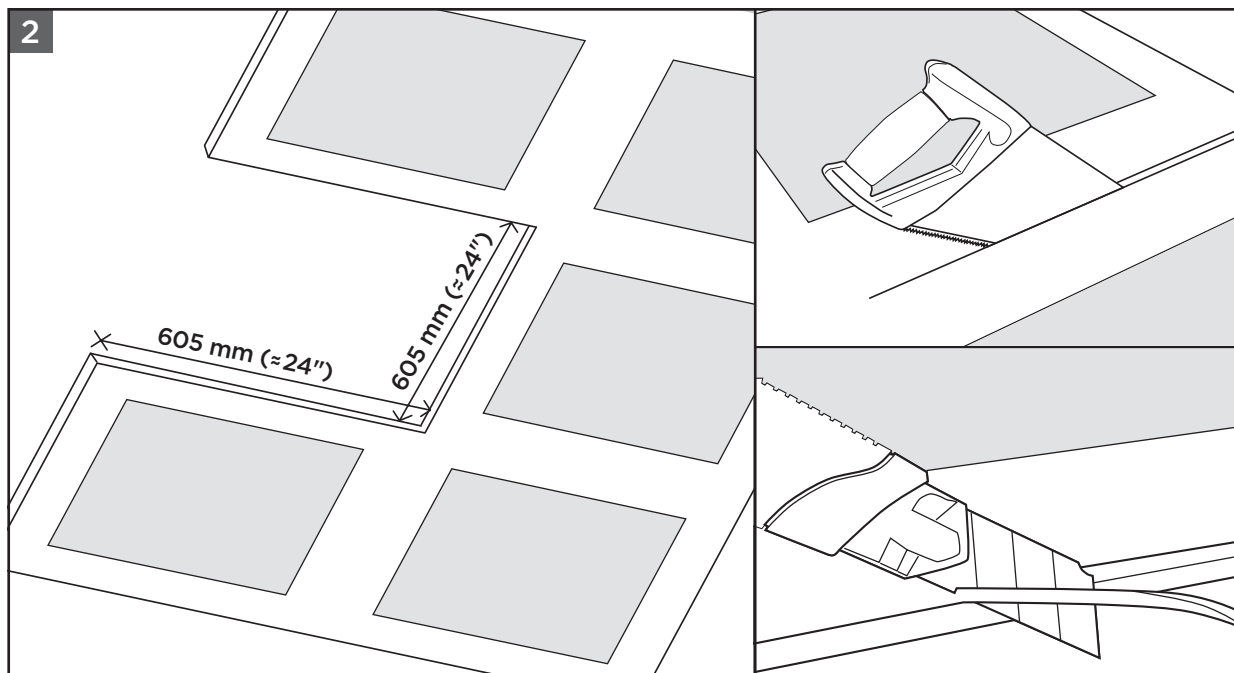
Flame Spread/Smoke Developed per
ASTM E84 & CAN/ULC-S102

Flame Spread: 25 or less
Smoke Developed: 50 or less
(Class A per ASTM E1264)

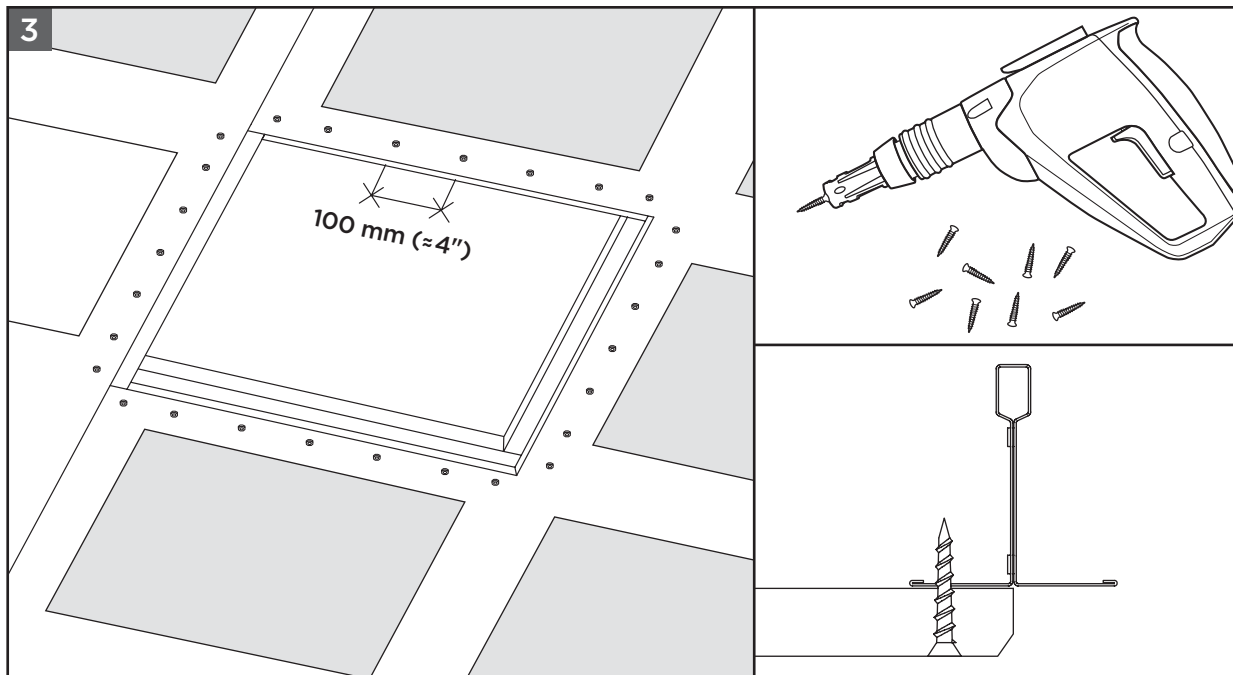
Installation for Gyptone® BIG™ Access Panel



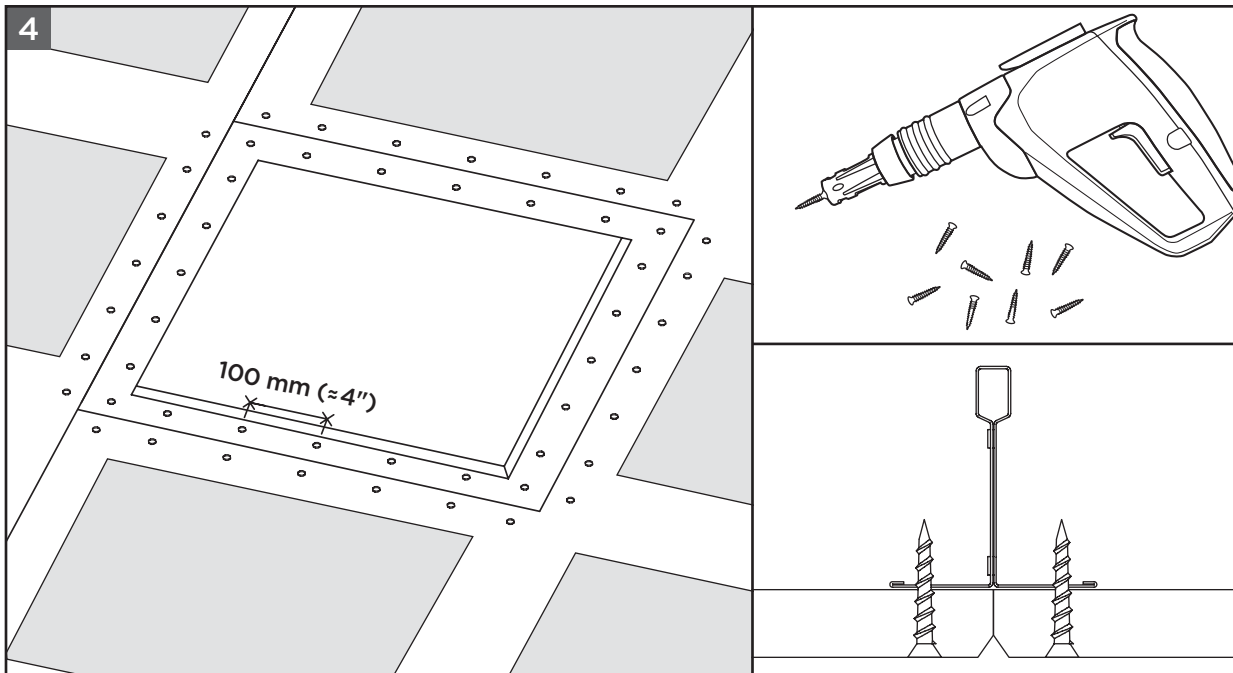
Gyptone BIG Access Panel is used in combination with the Gyptone BIG ceilings.



The measurements for cutting holes are centred around a perforated area. The hole is cut with a delicate jagged saw / knife. All edges must be bevelled with a knife.

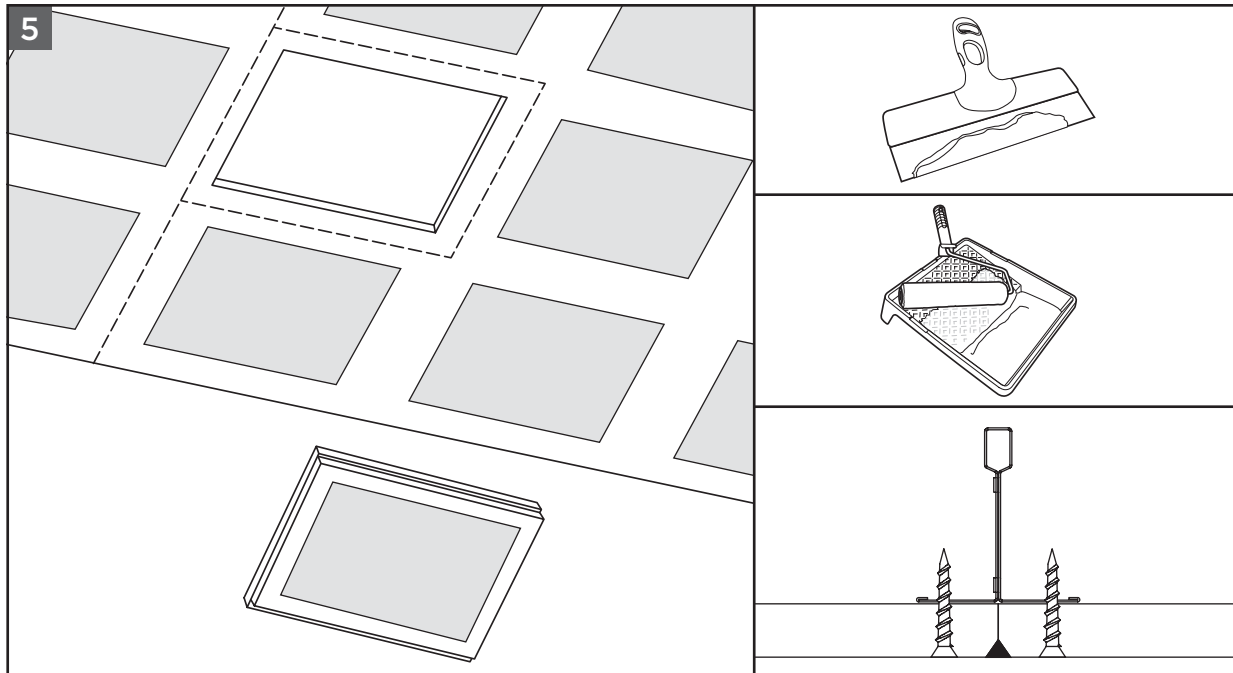


Fix the ceiling boards to the metal profiles. Screws are placed at a max. distance of 100 mm ($\approx 4''$). There must be a stable base on all four sides. An extra piece of drywall grid needs to be placed behind the gypsum board.

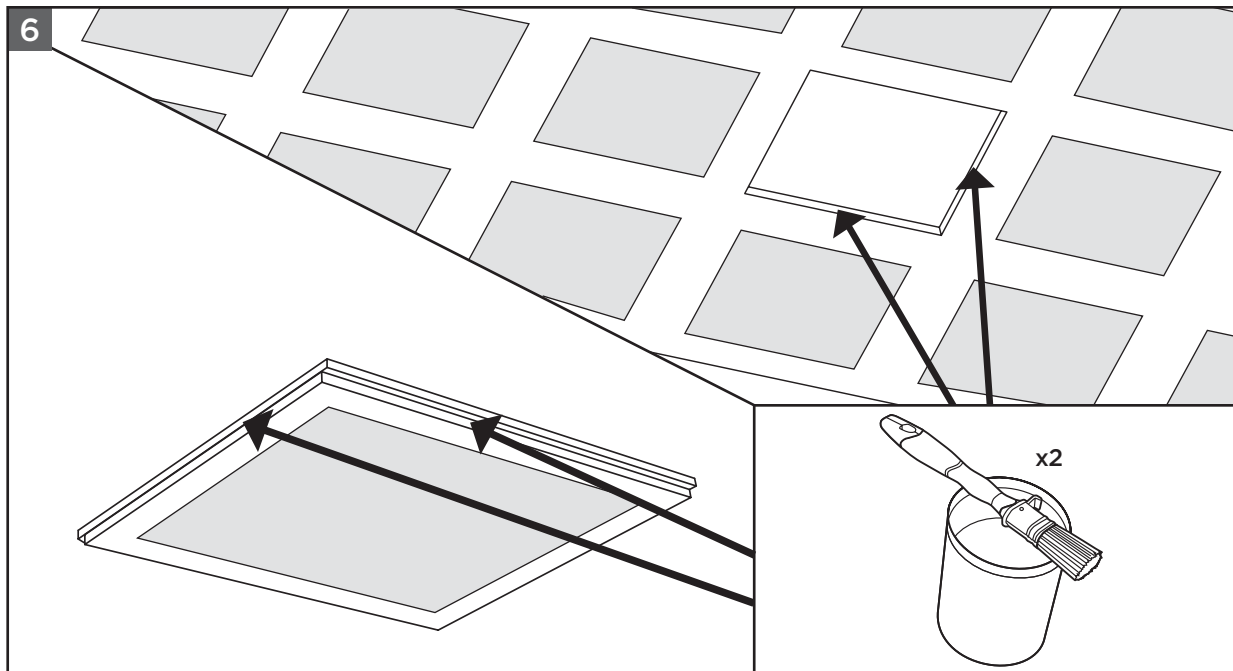


Carefully lift the frame into place and screw it into the metal profiles, max. distance cc 100 mm ($\approx 4''$).

Installation for Gyptone® BIG™ Access Panel

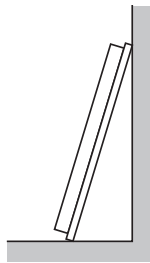
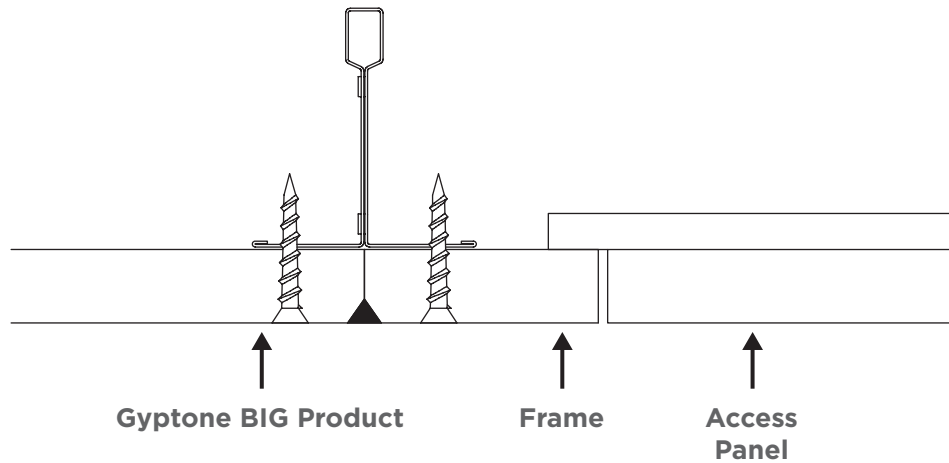


The board joints should be taped, finished, and sanded. Note that the Access Panel should be painted / dried before installation in order to avoid sticking to other surfaces.



The vertical gypsum edges on the frame/Access Panel must be painted twice with an extra resilient paint to strengthen the edges. For that reason it is recommended to use high gloss paint.

Installation for Gyptone® BIG™ Access Panel



When dismantling the Access Panel, it must always be placed in a standing position against the heavy rear board.

More information can be found on www.certainteed.com/ceilings-and-walls