

Gyptone® BIG™

Walls Installation Manual

DESIGN AND SPECIFICATIONS

Use of the Product

Gyptone BIG is a large-format, perforated gypsum acoustical panel that allows the creation of wall-to-ceiling surfaces without visible joints or breaks. Gyptone BIG is accessible through the use of Gyptone Access Panels.

Overall Depth of System

Minimum plenum height with Gyptone® GK Suspension System is 12".

Surfaces

The gypsum surface is intended to be painted after installation. Paint application must be made with a short nap roller (1/4" recommended). Do not spray paint panels as it will substantially impair the acoustic performance. Joints should be taped, finished, and sanded. See page 3 for additional information.

Suspension System

Gyptone BIG can be installed on a GK system in one level in accordance with this installation manual as well as the general specification of the project.

Loading

Maximum point load is 6.5 pounds. If higher loading is needed, the elements should be independently suspended from the structure.

Stability

Gyptone BIG is to be installed and used in rooms with relative humidity not exceeding 70% or temperatures exceeding 104 degrees F. Gyptone BIG can be curved (dry) to a maximum 20-foot radius if installed on preshaped framing.

Weight

Gyptone BIG products ≈ 1.6 lbs./SF.

Cleaning

Can be cleaned with a damp cloth depending on the final surface treatment. Do not use detergents.

Maintenance

Damages on edges or surfaces can be repaired by filling and painting.

Accessories

Use Gyptone Access Panels for access to the plenum.

Check List For Installing Metal Framing And Gyptone® Big™ Boards

Prior to installation it is recommended to read the manual thoroughly.

- | | |
|--|---|
| <input type="checkbox"/> Humidity in room not to exceed 70% during installation or usage. | <input type="checkbox"/> Adjust all GK-1 main profiles into level. |
| <input type="checkbox"/> Fix edge profile GK-C with maximum 400 mm (T16") center-to-center distance. | <input type="checkbox"/> Fill all joints and screw heads with adequate filler system in accordance with this manual. Subsequently sand until level. |
| <input type="checkbox"/> Survey the room and position the hanger brackets according to this manual and the general specification of the project. | <input type="checkbox"/> Finished surfaces to be primed and painted twice. |
| <input type="checkbox"/> Slide GK-1 main profiles into GK-C edge profile and twist the hanger brackets into position. | <input type="checkbox"/> Have expansion joints in accordance with the project specification been installed? |
| | <input type="checkbox"/> Check positioning of screws on page 6. |

Acoustic Walls, New Partitions

- 1 Ceiling structure / floor structure
- 2 Wall structure
- 3 GK C-Channel profile (AVU45)
- 4 GK Z-Channel profile (AVZ45)
- 5 2.5" CertainTeed Sustainable Insulation
- 6 CertainTeed Gypsum Board (1/2")
- 7 Gyptone BIG Board

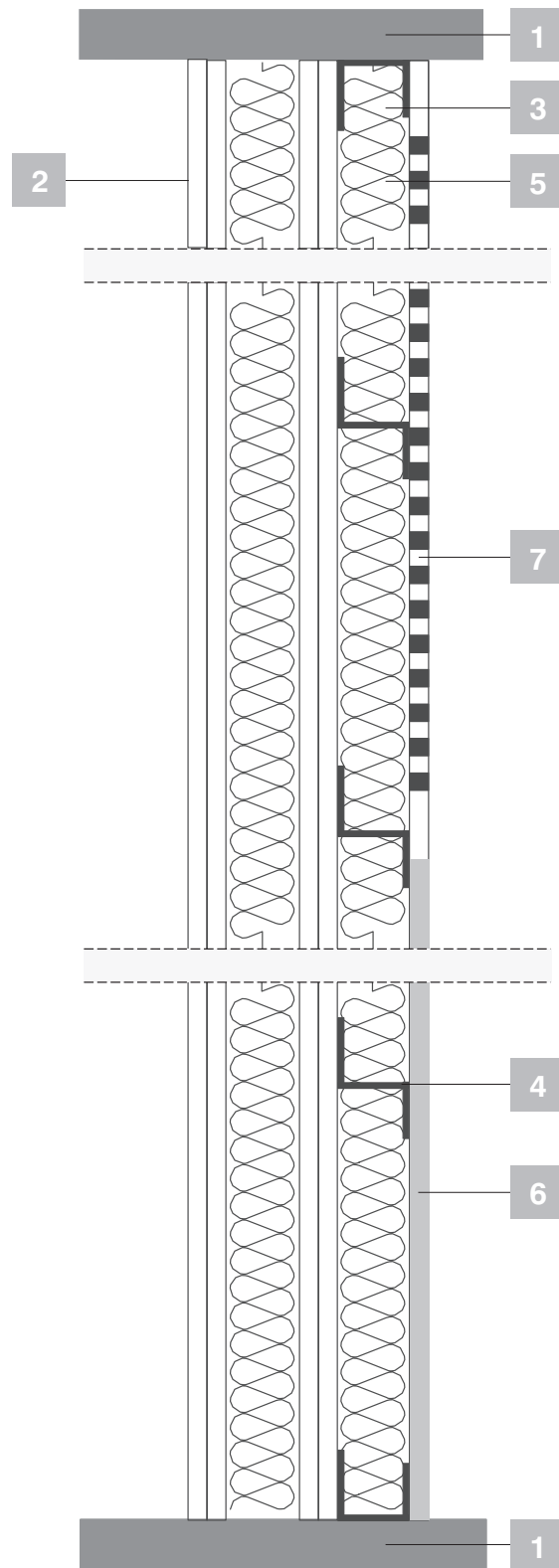
Installation

- Choose a suitable wall structure based on meeting the necessary requirements for fire, light, sound insulation and wall height. The chosen wall is built and used as a base for the Gyptone acoustic wall.
- Frame the wall structure with **GK-Channel** with distance between screws not exceeding 12 inches.
- Attach the **GK Z-channel** horizontally across the wall structure with the distance between the screws not exceeding 2 inches.
- The distance between the horizontal **GK Z-channel** sections is 300 mm ($\approx 11-13/16"$).
- Fit 2.5 inches of **CertainTeed Sustainable Insulation** between the Z-channel sections.
- Attach **Gyptone BIG** standing vertically. Locate the boards so that short board edges are directly over the mid-point of the Z-channel (screw surface).
- Attach **CertainTeed Gypsum Board** to lower part of the wall where incidental impact may occur.
- Screw distance is a maximum of 8 inches (where possible) on board edges.
- Screw distance is a maximum of 12 inches in the body of the board.
- Screws for Gyptone BIG and CertainTeed Gypsum Board should be **QSTR 25**.

Finishing

- Use **CertainTeed All-Purpose Joint Compound** (or equivalent) and **Marco Spark-Perf Paper Tape** (or equivalent) for all joints.
- All joints, screw holes and edges should be finished until a smooth, even surface is achieved.
- Paint application is one prime coat plus two finish coats applied with a 1/4" nap roller.

NOTE: Perforated Gyptone products must not be spray-painted. Taping/finishing must be done by hand (not with a taping gun)



Acoustic Walls, Existing Structures

- 1
- Wall structure
- 2
- GK C-Channel profile (AVU45)
- 3
- GK Z-Channel profile (AVZ45)
- 4
- 2.5" CertainTeed Sustainable Insulation
- 5
- CertainTeed Gypsum Board (1/2")
- 6
- Gyptone BIG Board


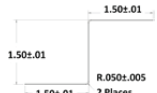
Installation

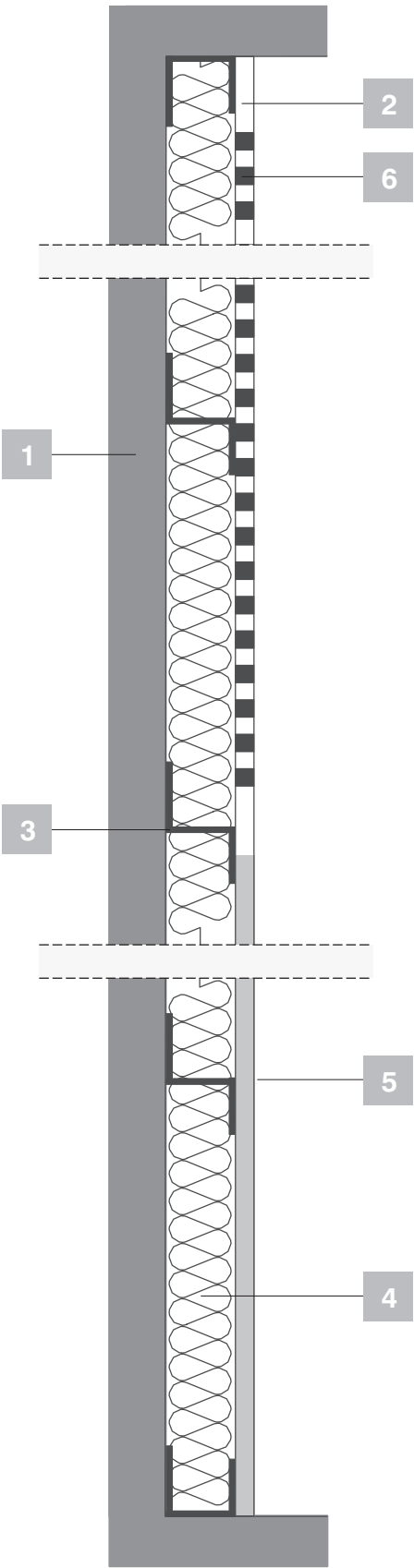
- Frame the wall structure with **GK C-Channel** with distance between screws not exceeding 12 inches.
- Attach the **GK Z-channel** horizontally across the wall structure with the distance between screws not exceeding 12 inches.
- The distance between the horizontal **GK Z-channel** sections is 300 mm (≈ 11-13/16").
- Fit 2.5 inches of **CertainTeed Sustainable Insulation** between the Z-channel sections.
- Attach **Gyptone BIG** standing vertically. Locate the boards so that short board edges are directly over the mid-point of the Z-channel (screw surface).
- Attach **CertainTeed Gypsum Board** to lower part of the wall where incidental impact may occur.
- Screw distance is a maximum of 8 inches (where possible) on board edges.
- Screw distance is a maximum of 12 inches in the body of the board.
- Screws for Gyptone BIG and CertainTeed Gypsum Board should be **QSTR 25**.

Finishing

- Use **CertainTeed All-Purpose Joint Compound** (or equivalent) and **Marco Spark-Perf Paper Tape** (or equivalent) for all joints.
- All joints, screw holes and edges should be finished until a smooth, even surface is achieved.
- Paint application is one prime coat plus two finish coats applied with a 1/4" nap roller.

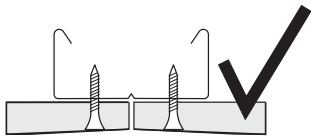
NOTE: Perforated Gyptone products must not be spray-painted. Taping/finishing must be done by hand (not with a taping gun)

Accessory Consumption Table for Walls (new / existing)			
C-channel		118 L.F./bundle	As required to frame perimeter of wall on all edges
Z-channel		98 L.F./bundle	Subtract the length of wall from total square footage of wall. The result is the approximate total Z-channel required in L.F.

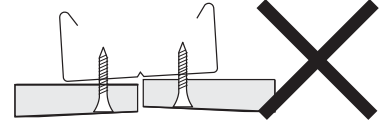
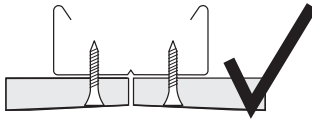


Gyptone Big Quick Reference

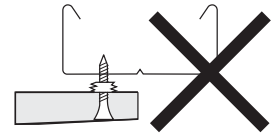
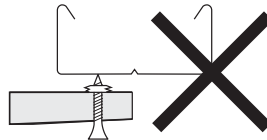
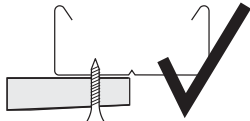
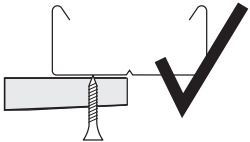
Board support



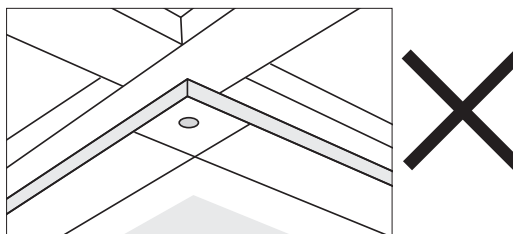
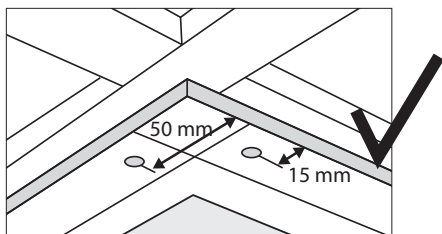
100% level support



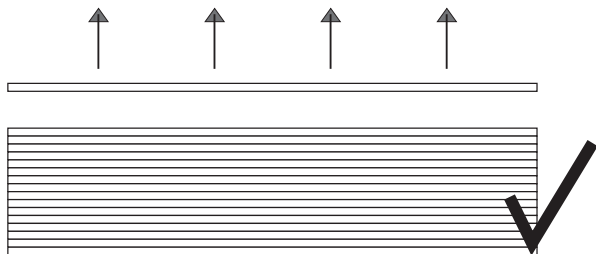
Full contact prior to screw fixing



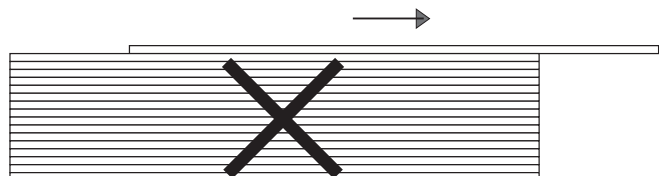
Positioning of screws



Gyptone BIG Boards are to be lifted vertically off the stack



Note: Do not slide panels as damage to acoustic tissue will likely result.



ASK ABOUT ALL OF OUR OTHER CERTAINTEED® PRODUCTS AND SYSTEMS:

ROOFING • SIDING • TRIM • DECKING • RAILING • FENCE • FOUNDATIONS
GYPSUM • CEILINGS • INSULATION • PIPE

www.certainteed.com <http://blog.certainteed.com>

CertainTeed Corporation
P.O. Box 860
Valley Forge, PA 19482

Professional: 800-233-8990
Consumer: 800-782-8777

© 10/12 CertainTeed Corporation
Code No. CTC-03-110