

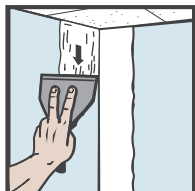
LEVELLINE® Drywall Corner

Install Guide

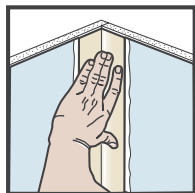
LEVELLINE Flexible Corners

Drywall corner trim that flexes to any inside or outside corner angle. Perfect for off-angles, tray ceilings and bay windows.

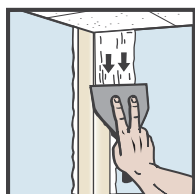
- Tapered Plastic Core will not split or dent
- Adjusts to any angle; eliminates pre-creasing allowing for instant application.
- Permanently bonds corner to drywall - accepts any finish.



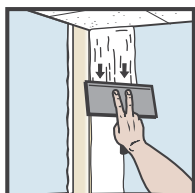
1. Apply an all-purpose or taping joint compound to corner.



2. Press LEVELLINE trim into position and straighten



3. Using a 4" finishing knife, remove excess mud and let dry.

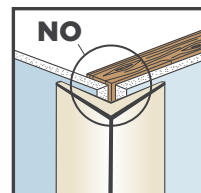
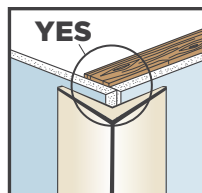


4. Use a 6" finishing knife to skim over corner, let dry. Sand and finish.

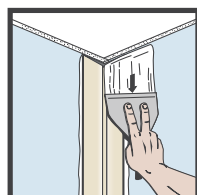
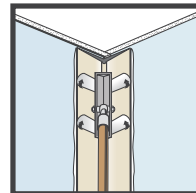
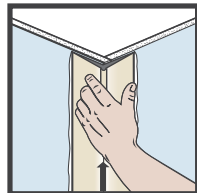
Store in a cool, dry area. Install with drywall joint compound.

LEVELLINE Outside 90°

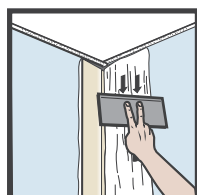
When installing drywall for 90° Corners, hang drywall as shown. With a 4" (100 mm) taping knife, apply Taping or All-Purpose joint compound to each corner at least 4" (100 mm) wide and 1/8" (3 mm) thick. To reduce installation time, use CertainTeed's Double Barrel Hopper to apply joint compound.



1. Apply LEVELLINE Outside 90 corner bead to the wall and press into position, ensuring that the bead is tight to the ceiling. Firmly embed corner bead using the taping knife or Outside 90 roller. Remove any excess compound and allow to dry for 24 hours.



2. With a 6" (150 mm) taping knife, apply a second coat of joint compound, carefully feathering the compound 6" (150 mm) out from the nose of the trim. Allow to dry.



3. With a 8" (200 mm) finishing knife, apply Finishing joint compound to the corner as smoothly as possible, feathering out the final coat 8" (200 mm) from the nose of the trim. Allow to dry; sand and paint.