

LEVELLINE®

FLEXIBLE DRYWALL CORNER



Drywall corner trim that flexes to any inside or outside corner angle



LEVELLINE® flexible corner rolls are perfect for outside/inside corners, off-angles, tray ceilings and bay window. Tapered profile design makes finishing fast and easy.

- Tapered Plastic Core will not split or dent
- Adjusts to any angle; eliminates precreasing allowing for instant application.
- Permanently bonds corner to drywall - accepts any finish.

PRODUCT DATA

PRODUCT	CERTAINTEED CODE	PACKAGE SIZE
LEVELLINE 100' x 2.75"	640656	12 Roll/ Master Pack

LEVELLINE

TIRED OF YOUR FLEX... SPENDING TOO MUCH TIME...

- Popping off the walls?
- Cracking?
- Blistering?
- Pre-creasing?
- Pre-measuring?
- Applying excessive mud?

LEVELLINE's tapered profile design eliminates installation headaches and callbacks. Installing off-angles, inside and outside corners is faster and easier with LEVELLINE's tapered flex design. Our flex goes straight from the box or roll onto the wall, and requires less mud to apply and finish.

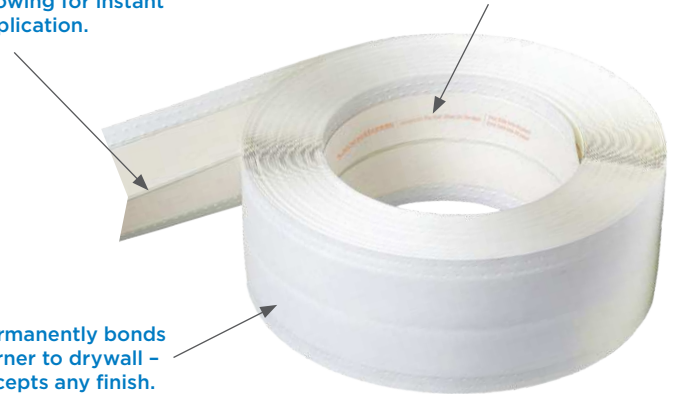
LEVELLINE's superior corner construction (tapered plastic core, joint tape and formulated surface paper) ensures corners will not split or dent. LEVELLINE can also withstand structural settling from green lumber and seismic movement without cracking or popping off the wall.

OUTPERFORMS FLAT FLEX AT EVERY ANGLE, ON ANY CORNER.

Memory-free hinge adjusts to any angle; eliminates pre-creasing allowing for instant application.

Tapered plastic core will not split or dent.

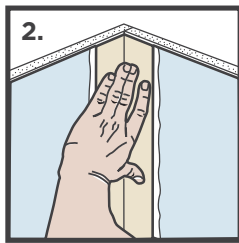
Permanently bonds corner to drywall - accepts any finish.



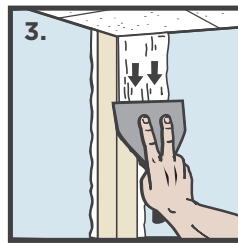
INSTALLATION INSTRUCTIONS



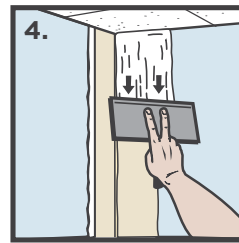
1. Apply all-purpose joint compound to corner.



2. Press LEVELLINE trim into position and straighten.



3. Using a 4" finishing knife, remove excess mud and let dry.



4. Use a 6" finishing knife to skim over corner, let dry. Sand and finish.

Store in a cool, dry area. Install with all-purpose drywall joint compound.

USGBC® and the related logo are trademarks owned by the U.S. Green Building Council® and are used with permission.



The Health Product Declaration® logo is a trademark or service mark of Health Product Declaration Collaborative, Inc., in the United States and in other countries and is being used herein under license.



CertainTeed

CEILING • DECKING • FENCE • GYPSUM • INSULATION • RAILING • ROOFING • SIDING • TRIM
 20 Moores Road, Malvern, PA 19355 800-233-8990 certainteed.com