

NO-COAT[®] Structural Laminate Drywall Corner System

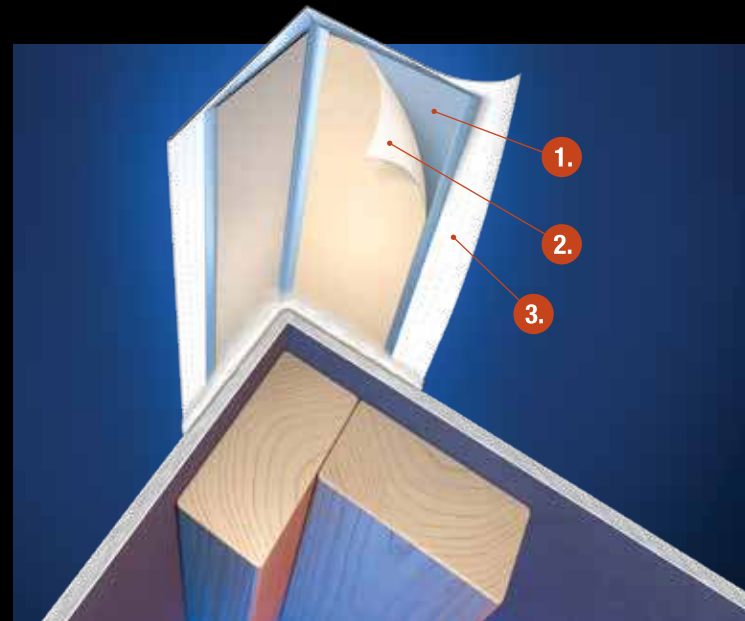
Whether finishing off-angles, archways, inside or outside corners, NO-COAT[®] offers a complete corner system for every job. And with CertainTeed tools and accessories, the application of NO-COAT corners is easier and more efficient.



SLAM[®] Technology – A Breakthrough in Drywall Corner Finishing

NO-COAT's Structural Laminate (SLAM) Corner System actually becomes part of the structure. SLAM Technology integrates three key components that deliver superior strength and durability, flexibility, faster installation and dramatic bottom line savings.

- 1. Tapered High Strength Copolymer Core** withstands severe impacts. Won't rust. Requires less mud.
- 2. Joint Tape** permanently bonds corner to drywall with All-Purpose mud.
- 3. Formulated Surface Paper** eliminates cracks, chips and peels, resists abrasion, and accepts any finish.



Box it for faster finishing.



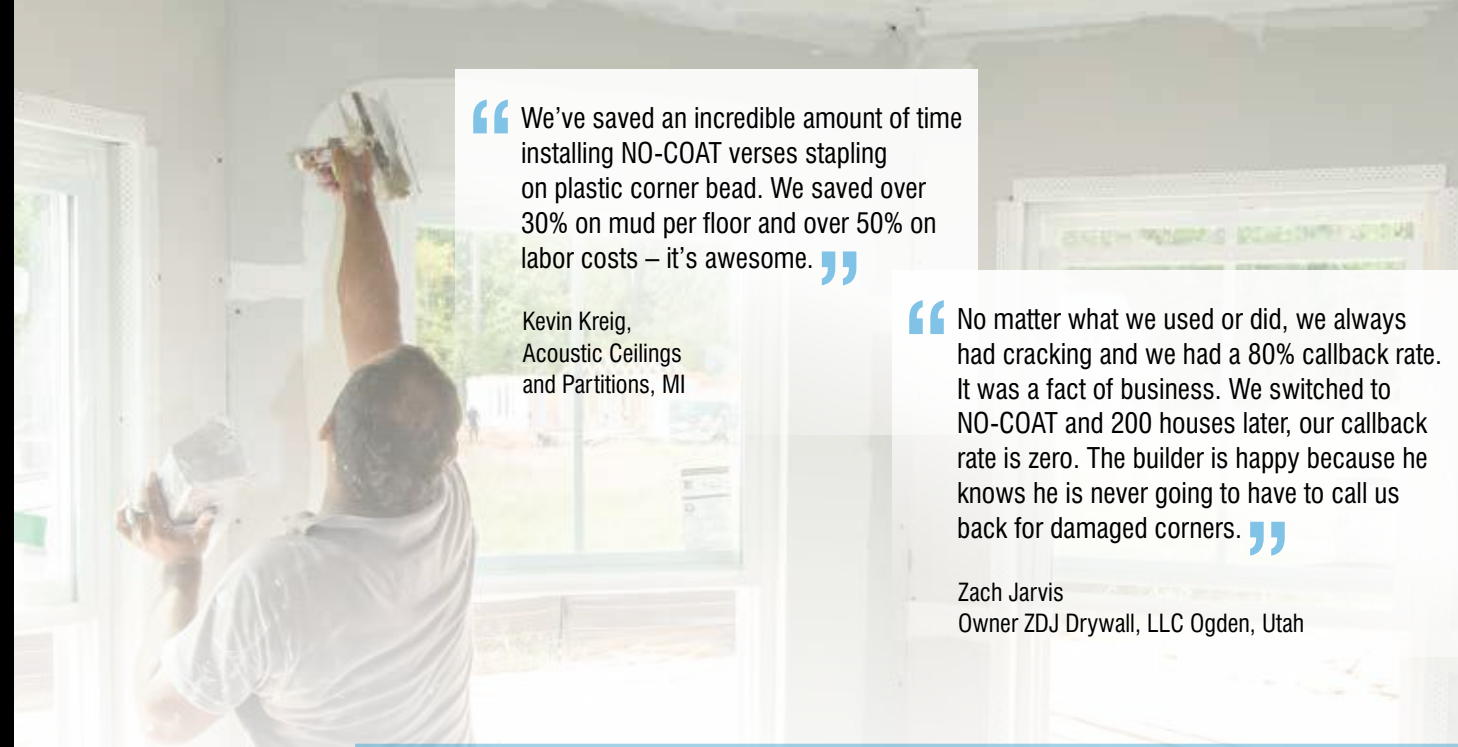
Installs in record time.



Increase production and save mud.



Just mud it and roll it on - fast and easy.



“ We've saved an incredible amount of time installing NO-COAT versus stapling on plastic corner bead. We saved over 30% on mud per floor and over 50% on labor costs – it's awesome. ”

Kevin Kreig,
Acoustic Ceilings
and Partitions, MI

“ No matter what we used or did, we always had cracking and we had a 80% callback rate. It was a fact of business. We switched to NO-COAT and 200 houses later, our callback rate is zero. The builder is happy because he knows he is never going to have to call us back for damaged corners. ”

Zach Jarvis
Owner ZDJ Drywall, LLC Ogden, Utah

When finishing off-angles, archways, inside or outside corners, NO-COAT[®] offers a complete corner system for every job. Refer to the matrix below for recommended applications:

	Off Angles	Inside Corners	Outside Corners	Archways	Industrial Applications	Large Gaps	Vaults, Soffits	Window Returns, Door Jambs, Drop Ceilings, etc.	Long Spans Over 10'	Short Spans Under 10'
Flexible Corner 325 3.25" wide x 100' roll	■	■	■			■	■			■
Flexible Corner 450 4.5" wide x 100' roll	■		■		■	■			■	
Inside 90 8', 9', 10', lengths	■	■								
Outside 90 8', 9', 10', 12' lengths	■		■							
L-Trim 1/2" 10' lengths					■			■		
L-Trim 5/8" 10' lengths					■			■		
Bullnose 3/8" 8', 9', 10', 12' lengths			■		■					
Bullnose 3/4" 8', 9', 10', 12' lengths			■		■					
Arch Bullnose 3/4" 10' lengths				■						
Arch Outside 90 10' lengths				■						

Custom lengths available, contact us for more information.



ASK ABOUT ALL OF OUR OTHER CERTAINTEED[®] PRODUCTS AND SYSTEMS:

ROOFING • SIDING • TRIM • DECKING • RAILING • FENCE
GYPSUM • CEILINGS • INSULATION

Professional: 800-233-8990 Consumer: 800-782-8777

© 08/16 CertainTeed Corporation, Printed in the USA Rev. 11-2016 CTG-4135

CertainTeed



Drywall Corner





NO-COAT FLEXIBLE CORNERS

These flex roll products are ideal for off-angle applications, both short and long runs, long columns and soffits. Wide flange covers large gaps and poor framing. Built-in flexible hinge fits any inside or outside corner angle and creates crisp, straight lines.

Flexible Corner 325
3.25" wide x 100' roll
(82.6 mm x 30.48 m)



Flexible Corner 450
4.5" wide x 100' roll
(114 mm x 30.48 m)

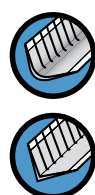


NO-COAT STICKS

One of our best selling products, NO-COAT Sticks are made with our patented SLAM design. NO-COAT pre-cut stick lengths withstand severe impacts, settling and seismic movements without cracking, denting, chipping or peeling. Easy to install lengths deliver perfect corners in record time. Use the CertainTeed DOUBLE BARREL HOPPER and No-Coat Rollers to ensure high speed installs and the best results.



INSIDE 90 8', 9', 10' (2.4 m, 2.7 m, 3 m)	OUTSIDE 90 8', 9', 10', 12' (2.4 m, 2.7 m, 3 m, 3.7 m)	1/2" L-TRIM 10' (3 m)	5/8" L-TRIM 10' (3 m)	3/8" BULLNOSE 8', 9', 10', 12' (2.4 m, 2.7 m, 3 m, 3.7 m)	3/4" BULLNOSE 8', 9', 10', 12' (2.4 m, 2.7 m, 3 m, 3.7 m)
--	---	------------------------------------	------------------------------------	--	--

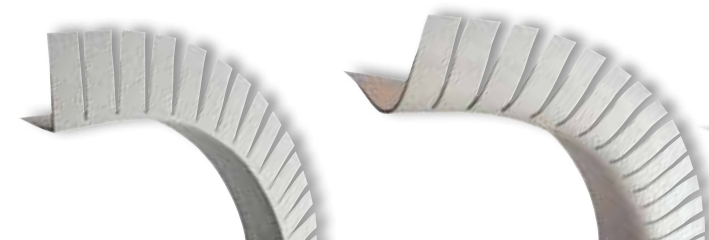


NO-COAT ARCH

ARCH tape-on arches have notched flanges that flex and conform to any arch. Stiff profile fine-tunes poor framing and creates a perfectly smooth, round curve.

OUTSIDE 90
10' (3 m)

3/4" BULLNOSE
10' (3 m)



CertainTeed TOOLS allow for high speed installations and flawless results.

NO-COAT Rollers

Rollers press corners firmly and accurately into place, creating an absolute bond to the drywall



CertainTeed Double Barrel Hopper

The Double Barrel Hopper is set up for all angles, all the time. Install off-angles, inside 90s, bullnose, and outside 90s in record time.



Stainless steel gates accommodate off-angles, bullnose, inside and outside 90s.

"We've noticed big mud savings so far plus we don't need any glue, staples or mesh tape. Now we aren't getting any splitting, cracking or dents like when we used vinyl or metal trim."

Shawn Conlin, Clayco Inc., UT

"I've never run bead with a box like this, it's unbelievable. I don't box on metal or plastic bead – it takes too much mud and the box runs out so fast. NO-COAT is smooth and consistent and uses so much less mud. I'm done in half the time it would have taken with metal or plastic bead."

Terry Roberts, Finisher ACP Ann Arbor, MI

"Boxing with NO-COAT is so much faster, and easier on your body. It bonds tight and won't pop. I can knock-out five NO-COAT corners compared to one with metal bead. Your production speed increases phenomenally."

Charles Lee, Barton Mallow Interiors, MI

"I was very shocked, we're saving 50% of mud per floor and 20% on labor per floor. And as we have used it more, we are saving even more time and money. We saved \$90,000. on one tower job alone. I would have never believed it."

Duke Gross, Taping Superintendent, Ford Contracting Las Vegas, Nevada

"The new Double Barrel Hopper system is so much faster. Two of us put on 650 sticks of NO-COAT trim in 6 1/2 hours. You don't have to change attachments. It just blew me away."

Todd Soucie, Taper Foreman, Troy Metal Concepts Fox Run Wixom, Michigan

"NO-COAT went on so fast, I got done in 1 1/2 days what would have taken four days with metal bead. And boxing NO-COAT speeds the finishing process so much."

Hector Valdez, KHS&S, NV

