

CertainTeed

Regular Gypsum Board

Product Data and Submittal

Product Description

CertainTeed Regular Gypsum Boards are an interior gypsum board that consist of a solid set, fire-resistive gypsum core enclosed in ivory colored face paper and liner back paper. Long edges are slightly tapered, allowing joints to be reinforced and concealed with joint tape and joint compound. CertainTeed Regular Gypsum Boards are available in a variety of lengths and widths.

Basic Uses

CertainTeed Regular Gypsum Board is used for interior walls and ceilings in standard residential or commercial applications. It can be used for new construction or renovations over wood or steel framing. It is typically nailed or screwed to studs spaced 16" (400 mm) or 24" (610 mm) o.c., but can be applied by laminating or with the use of an adhesive.

CertainTeed 54" (1370 mm) Regular is intended for horizontal application on tall walls, eliminating one horizontal joint. Fewer joints means less time spent finishing and a smoother, flatter wall.

For 9' walls, two courses of CertainTeed 54" (1370 mm) Regular would be used. For 8'6" walls, one course of CertainTeed 54" (1370 mm) Regular would be used in combination with one course of 48" (1220 mm) CertainTeed Regular gypsum board. This eliminates the taping and filling of one joint over the total wall circumference.

Advantages

- Uniformly flat, attractive appearance; no shadows.
- High edge hardness.
- No wavy edges, warps, bows or deformities.
- Uniform high-strength cores eliminate crumbling, cracking.
- Edge tapers consistent to form perfect joints.
- Excellent thermal barrier and sound attenuation qualities.

Limitations

- Exposure to continuous moisture or extreme temperatures should be avoided. Not recommended for continuous exposure to temperatures exceeding 125°F (52°C).
- Ceiling framing spacing should not exceed 16" (400 mm) o.c.

- Wall framing spacing should not exceed 24" (610 mm).
- Store indoors and off ground surface.
- Boards should be stacked flat with care taken to prevent sagging or damage to edges, ends and surfaces.
- Storing board lengthwise leaning against the framing is not recommended.
- Boards should be carried, not dragged, to place of installation to prevent damaging finished edges.
- Cutting and scoring should be done from the face side.
- In cold weather or during joint finishing, temperatures within the enclosure should stay within the range of 50° to 95°F (10° to 35°C) and with sufficient ventilation to carry off excess moisture.

Product Data

Thicknesses: 1/4" (6.4 mm), 3/8" (9.5 mm), 1/2" (12.7 mm)

Widths: 4' (1220 mm) standard; 54" (1370 mm)

Lengths: 8' to 12' (2440 to 3660 mm) standard

Continued on back

Job Name

Contractor

Date

Products Specified:

Submittal Approvals
(Stamps or Signatures)

CertainTeed
SAINT-GOBAIN

Weight (approx.):

- 1/4" (6.4 mm) – 1.13 lb/ft² (5.5 kg/m²)
- 3/8" (9.5 mm) – 1.25 lb/ft² (6.1 kg/m²)
- 1/2" (12.7 mm) – 1.60 lb/ft² (7.8 kg/m²)

Core: Gypsum (noncombustible)

Edges: 1/2" boards are available in square and tapered edge. 1/4" and 3/8" are available in 4' x 8' (1220 mm x 2440 mm) and tapered edge only.

End: Square – factory cut

Packaging: Two pieces per bundle, face-to-face and end-taped

Special widths, lengths or edges may be available on special order. Consult your CertainTeed sales representative.

Technical Data

Surface Burning Characteristics

All CertainTeed Gypsum Board has a Flame Spread rating of 15 and Smoke Developed rating of 0, in accordance with ASTM E84, (UL 723, UBC 8-1, NFPA 255, CAN/ULC-S102).

Applicable Standards and References

- ASTM C1396
- ASTM C36
- CAN/CSA-A82.27
- ASTM C840
- CAN/CSA-A82.31 Gypsum Board Application
- Gypsum Association GA-216
- Gypsum Association GA-214
- ICC International Building Code (IBC)
- National Building Code of Canada (NBCC)

Installation

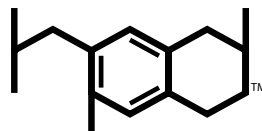
Decoration

CertainTeed Regular Gypsum Board accepts most types of paints, texture and wall covering materials. The surface shall be primed and sealed with a full-bodied latex primer before applying a final decorative material. This will equalize the suction between the joint compounds and the paper surface. For best painting results, all surfaces, including joint compound, should be clean, dust-free and not glossy. If glossy paints are used, a thin skim coat of compound over the entire surface, Level 5 finish, is recom-

mended to reduce highlighting or joint photographing. This method is also recommended for areas of critical sidelighting of natural or artificial light sources. A sealer application under wallpaper or other wall covering is also recommended so the board surface will not be damaged if the covering is subsequently removed during redecorating. Joint treatment must be thoroughly dry before proceeding with primer-sealer application and final decoration.

Notice

The information in this document is subject to change without notice. CertainTeed assumes no responsibility for any errors that may inadvertently appear in this document.



Health Product
DECLARATION

The Health Product Declaration™ and logo is owned by the Health Product Declaration Collaborative™ and is used with permission.



ASK ABOUT ALL OF OUR OTHER CERTAINTEED® PRODUCTS AND SYSTEMS:

ROOFING • SIDING • TRIM • DECKING • RAILING • FENCE
GYPSUM • CEILINGS • INSULATION

www.certainteed.com <http://blog.certainteed.com>

CertainTeed Corporation
20 Moores Road
Malvern, PA 19355

Professional: 800-233-8990
Consumer: 800-782-8777