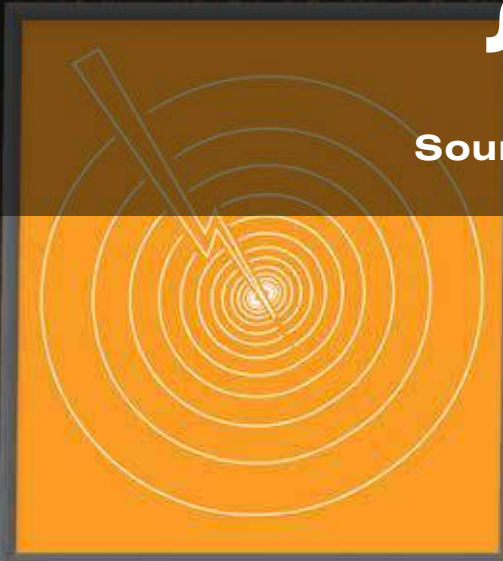


CertainTeed

**silentFX**®  
*QuickCut*

Sound Wall Assembly Guide



**CertainTeed**  
SAINT-GOBAIN

Gypsum

## SilentFX® QuickCut Fire and Acoustic Assemblies

SilentFX® QuickCut is an excellent acoustic solution for meeting Sound Transmission Class (STC) specifications without complex techniques such as isolation clips or resilient channels. It can also help reduce material usage versus traditional gypsum systems that require high sound attenuation.

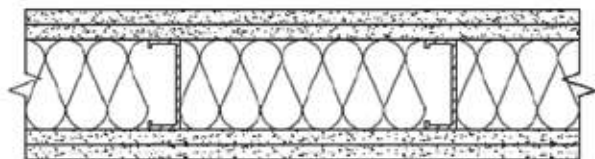
### **MORE RELIABLE THAN CLIPS AND CHANNELS**

Clips and resilient channel can easily be short-circuited during the construction process and even afterwards, during picture hanging or pressing of heavy objects against the wall, negatively affecting acoustic performance. These risks are eliminated when using SilentFX® QuickCut, thus providing more consistent acoustic performance. When used in systems with resilient channel, SilentFX® QuickCut, can reduce the negative effect of short circuits.

### **SQUARE-FOOT SAVINGS**

The high acoustic performance of SilentFX® QuickCut makes it possible to build effective noise-reducing walls with less material, gaining valuable square footage, and saving both construction time and material cost. Less material used also means a more sustainable structure in keeping with today's green building practices.

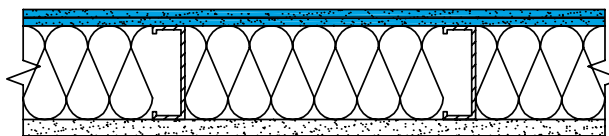
### **DOUBLE LAYER CERTAINTED 5/8" TYPE X**



### **DOUBLE LAYER CERTAINTED 5/8" TYPE X**

Thickness: 6-1/8"  
Sound test: STC 55

### **SINGLE LAYER SILENTFX® QUICKCUT 5/8" TYPE X**



### **SINGLE LAYER CERTAINTED 5/8" TYPE X**

Thickness: 4-7/8"  
Sound test: STC 55

Visit [http://www.certainteed.com/cad\\_gypsum.aspx](http://www.certainteed.com/cad_gypsum.aspx) for more assemblies.

## 1/2" [12.7 MM] SILENTFX® QUICKCUT – WOOD STUD SYSTEMS

**A** 2"x4" [38x89 mm] wood studs 16" [406 mm] o.c.

**ONE SIDE**

**B** 1/2" [12.7 mm] SilentFX®\*\* applied with 1-1/4" [32 mm] type W screws 16" [406 mm] o.c.

**OPPOSITE SIDE**

**C** 1/2" [12.7 mm] CertainTeed Regular applied with 1-1/4" [32 mm] type W screws 16" [406 mm] o.c.  
All joints staggered.

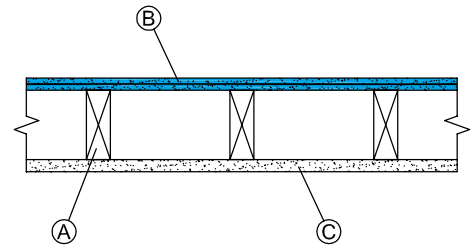
**STC RATING**

38

OL 11-0626

**FIRE RATING**

N/A



**A** 2"x4" [38x89 mm] wood studs 16" [406 mm] o.c.

**ONE SIDE**

**B** 1/2" [12.7 mm] SilentFX®\*\* applied with 1-1/4" [32 mm] type W screws 16" [406 mm] o.c.

**OPPOSITE SIDE**

**C** 1/2" [12.7 mm] CertainTeed Regular applied with 1-1/4" [32 mm] type W screws 16" [406 mm] o.c.  
All joints staggered.

**D** 3-1/2" [90 mm] CertainTeed Thermal & Acoustical Fiber Glass Insulation or equivalent.

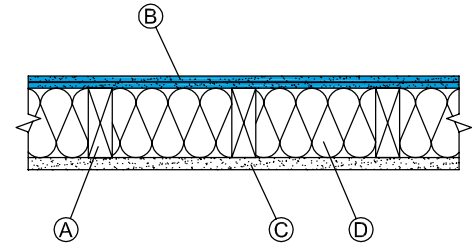
**STC RATING**

42

OL 11-0630

**FIRE RATING**

N/A



**A** 2"x4" [38x89 mm] wood studs 24" [610 mm] o.c.

**ONE SIDE**

**B** Base layer 1/2" [12.7 mm] CertainTeed Regular applied with 1-1/4" [32 mm] type W screws 16" [406 mm] o.c.

**C** Face layer 1/2" [12.7 mm] SilentFX®\*\* applied with 1-5/8" [41 mm] type W screws 16" [406 mm] o.c.

**OPPOSITE SIDE**

**D** 1/2" [12.7 mm] CertainTeed Regular applied with 1-1/4" [32 mm] type W screws 16" [406 mm] o.c.  
All joints staggered. No insulation in the cavity.

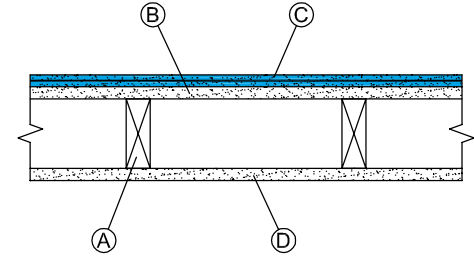
**STC RATING**

42

OL 10-0906

**FIRE RATING**

N/A



**A** 2"x4" [38x89 mm] wood studs 24" [610 mm] o.c.

**ONE SIDE**

**B** 1/2" [12.7 mm] SilentFX®\*\* applied with 1-1/4" [32 mm] type W screws 16" [406 mm] o.c.

**OPPOSITE SIDE**

**C** 1/2" [12.7 mm] CertainTeed Regular applied with 1-1/4" [32 mm] type W screws 16" [406 mm] o.c.  
All joints staggered.

**D** 3-1/2" [90 mm] CertainTeed Thermal & Acoustical Fiber Glass Insulation or equivalent.

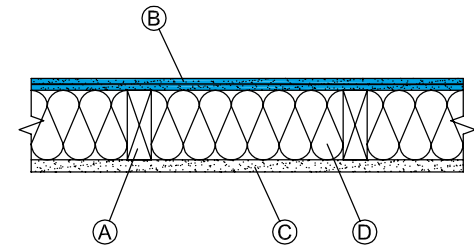
**STC RATING**

49

OL 10-0904

**FIRE RATING**

N/A



**A** 2"x4" [38x89 mm] wood studs 24" [610 mm] o.c.

**ONE SIDE**

**B** Base layer 5/8" [15.9 mm] CertainTeed Type X applied with 1-1/4" [32 mm] type W screws 12" [300 mm] o.c.

**C** Face layer 1/2" [12.7 mm] SilentFX<sup>®</sup>\*\* applied with 1-5/8" [41 mm] type W screws 16" [406 mm] o.c.

**OPPOSITE SIDE**

**D** 5/8" [15.9 mm] CertainTeed Type X applied with 1-1/4" [32 mm] type W screws 12" [300 mm] o.c.  
All joints staggered.

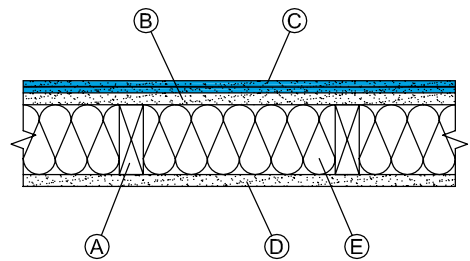
**E** 3-1/2" [90 mm] CertainTeed Thermal & Acoustical Fiber Glass Insulation or equivalent.

**STC RATING**

50  
OL 10-1021

**FIRE RATING**

1 hr.  
UL/cUL U309  
GA WP 3510



**A** 2"x4" [38x89 mm] wood studs 24" [610 mm] o.c.

**ONE SIDE**

**B** Base layer 1/2" [12.7 mm] CertainTeed Regular applied with 1-1/4" [32 mm] type W screws 16" [406 mm] o.c.

**C** Face layer 1/2" [12.7 mm] SilentFX<sup>®</sup>\*\* applied with 1-5/8" [41 mm] type W screws 16" [406 mm] o.c.

**OPPOSITE SIDE**

**D** 1/2" [12.7 mm] CertainTeed Regular applied with 1-1/4" [32 mm] type W screws 16" [406 mm] o.c.  
All joints staggered.

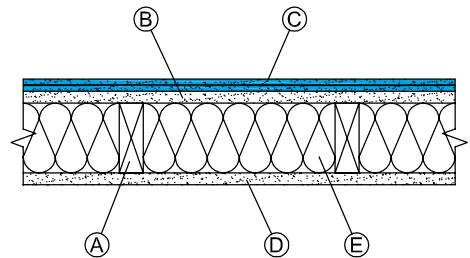
**E** 3-1/2" [90 mm] CertainTeed Thermal & Acoustical Fiber Glass Insulation or equivalent.

**STC RATING**

50  
OL 10-0905

**FIRE RATING**

N/A



**A** 2"x4" [38x89 mm] wood studs 24" [610 mm] o.c.

**ONE SIDE**

**B** 1/2" [12.7 mm] SilentFX<sup>®</sup>\*\* applied with 1-5/8" [32 mm] type W screws 16" [406 mm] o.c.

**OPPOSITE SIDE**

**C** 1/2" [12.7 mm] SilentFX<sup>®</sup>\*\* applied with 1-5/8" [41 mm] type W screws 16" [406 mm] o.c.  
All joints staggered.

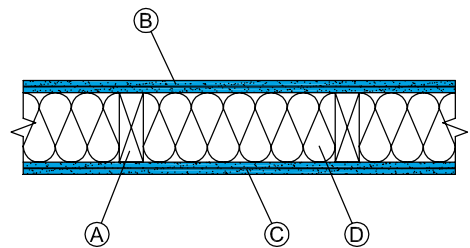
**D** 3-1/2" [90 mm] CertainTeed Thermal & Acoustical Fiber Glass Insulation or equivalent.

**STC RATING**

52  
OL 10-0901

**FIRE RATING**

N/A



## 5/8" [15.9 MM] SILENTFX® QUICKCUT – WOOD STUD SYSTEMS

**A** 2"x4" [38x89 mm] wood studs 24" [610 mm] o.c.

**ONE SIDE**

**B** 5/8" [15.9 mm] SilentFX®\*\* applied with 1-5/8" [41 mm] type W screws 12" [300 mm] o.c.

**OPPOSITE SIDE**

**C** 1/2" [12.7 mm] CertainTeed Regular applied with 1-1/4" [32 mm] type W screws 12" [300 mm] o.c.

All joints staggered.

**D** 3-1/2" [90 mm] CertainTeed Thermal & Acoustical Fiber Glass Insulation or equivalent.

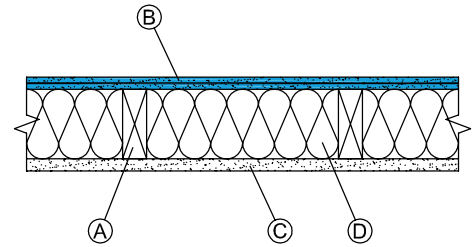
**STC RATING**

48

OL 10-0806

**FIRE RATING**

N/A



**A** 2"x4" [38x89mm] wood studs 24" [610 mm] o.c.

**ONE SIDE**

**B** 5/8" [15.9 mm] SilentFX®\*\* applied with 1-1/4" [32 mm] type W screws 12" [300 mm] o.c.

**OPPOSITE SIDE**

**C** 5/8" [15.9 mm] SilentFX®\*\* applied with 1-1/4" [32 mm] type W screws 12" [300 mm] o.c.

**D** 3-1/2" [90 mm] CertainTeed Thermal & Acoustical Fiber Glass Insulation or equivalent

**STC RATING**

54

OL 15-1110

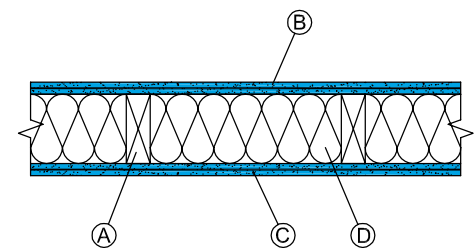
**FIRE RATING**

1 hr.

UL/cUL U309

ULC W313

GA WP 3510



**A** 2"x4" [38x89 mm] wood studs 24" [610 mm] o.c.

**ONE SIDE**

**B** 5/8" [15.9 mm] SilentFX® QuickCut applied with 1-1/4" [32 mm] type W screws 12" [300 mm] o.c.

**OPPOSITE SIDE**

**C** 5/8" [15.9 mm] CertainTeed Type X applied with 1-1/4" [32 mm] type W screws 12" [300 mm] o.c.

All joints staggered.

**D** 3-1/2" [90 mm] CertainTeed Thermal & Acoustical Fiber Glass Insulation or equivalent.

**STC RATING**

51

OL 15-0503

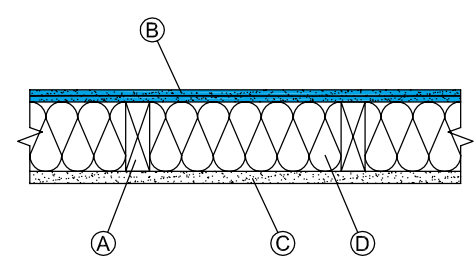
**FIRE RATING**

1 hr.

UL/cUL U309

ULC W313

GA WP 3510



**A** 2"x4" [38x89 mm] wood studs 24" [610 mm] o.c.

**ONE SIDE**

**B** Resilient channel 24" [610 mm] o.c.

**C** 5/8" [15.9 mm] SilentFX®\*\* applied with 1" [25 mm] type S screws 12" [300 mm] o.c.

**OPPOSITE SIDE**

**D** 5/8" [15.9 mm] CertainTeed Type X applied with 1-5/8" [41 mm] type W screws 12" [300 mm] o.c.

All joints staggered.

**E** 3-1/2" [90 mm] CertainTeed Thermal & Acoustical Fiber Glass Insulation or equivalent.

**STC RATING**

56

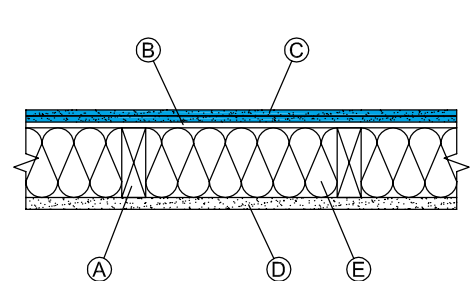
OL 11-0625

**FIRE RATING**

1 hr.

UL/cUL U309

GA WP 3243



**A** 2"x4" [38x89 mm] wood studs 24" [610 mm] o.c.

**ONE SIDE**

**B** Resilient channel 24" [610 mm] o.c.

**C** Base layer 5/8" [15.9 mm] SilentFX\*\* applied with 1" [25 mm] type S screws 12" [300 mm] o.c.

**D** Face layer 5/8" [15.9 mm] CertainTeed Type X applied with 1-5/8" [41 mm] type S screws 12" [300 mm] o.c.

**OPPOSITE SIDE**

**E** 5/8" [15.9 mm] CertainTeed Type X applied with 1-1/4" [32 mm] type W screws 12" [300 mm] o.c.  
All joints staggered.

**F** 3-1/2" [90 mm] CertainTeed Thermal & Acoustical Fiber Glass Insulation or equivalent.

**STC RATING**

59

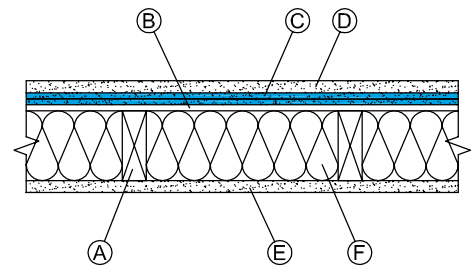
OL 10-1020

**FIRE RATING**

1 hr.

UL/cUL U305

GA WP 3243



**A** 2"x4" [38x89 mm] wood studs 16" [406 mm] o.c.

**ONE SIDE**

**B** Resilient channel 24" [610 mm] o.c.

**C** 5/8" [15.9 mm] SilentFX\*\* applied with 1" [25 mm] type S screws 12" [300 mm] o.c.

**OPPOSITE SIDE**

**D** 5/8" [15.9 mm] CertainTeed Type X applied with 1-1/4" [32 mm] type W screws 12" [300 mm] o.c.  
All joints staggered.

**E** 3-1/2" [90 mm] CertainTeed Thermal & Acoustical Fiber Glass Insulation or equivalent.

**STC RATING**

51

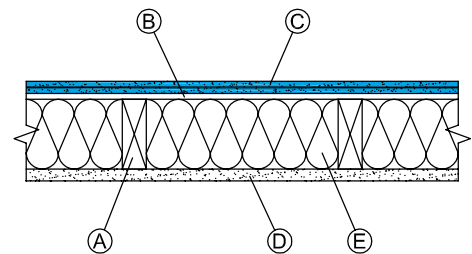
OL 10-1013

**FIRE RATING**

1 hr.

UL/cUL U305

GA WP 3243



**A** 2"x4" [38x89 mm] wood studs 16" [406 mm] o.c.

**ONE SIDE**

**B** Resilient channel 24" [610 mm] o.c.

**C** Base layer 5/8" [15.9 mm] SilentFX\*\* applied with 1" [25 mm] type S screws 12" [300 mm] o.c.

**D** Face layer 5/8" [15.9 mm] CertainTeed Type X applied with 1-5/8" [41 mm] type S screws 12" [300 mm] o.c.

**OPPOSITE SIDE**

**E** 5/8" [15.9 mm] CertainTeed Type X applied with 1-1/4" [32 mm] type W screws 12" [300 mm] o.c.  
All joints staggered.

**F** 3-1/2" [90 mm] CertainTeed Thermal & Acoustical Fiber Glass Insulation or equivalent.

**STC RATING**

57

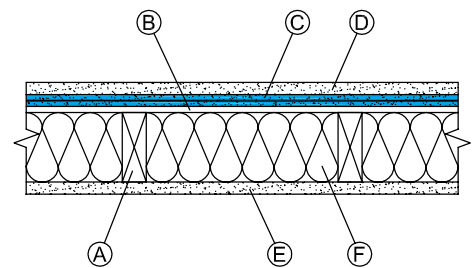
OL 10-1015

**FIRE RATING**

1 hr.

UL/cUL U305

GA WP 3243



**A** 2"x4" [38x89 mm] wood studs 24" [610 mm] o.c.

**ONE SIDE**

**B** Resilient channel 24" [610 mm] o.c.

**C** 5/8" [15.9 mm] SilentFX\*\* applied with 1" [25 mm] type S screws 12" [300 mm] o.c.

**OPPOSITE SIDE**

**D** 5/8" [15.9 mm] SilentFX\*\* applied with 1-1/4" [32 mm] type W screws 12" [300 mm] o.c.  
All joints staggered.

**E** 3-1/2" [90 mm] CertainTeed Thermal & Acoustical Fiber Glass Insulation or equivalent.

**STC RATING**

59

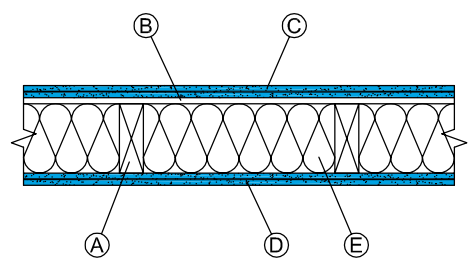
OL 11-0624

**FIRE RATING**

1 hr.

UL/cUL U309

GA WP 3243



- A** Double row 2"x4" [38x89 mm] wood studs on separate plates, 16" [406 mm] o.c. with 1" [25 mm] gap.

**ONE SIDE**

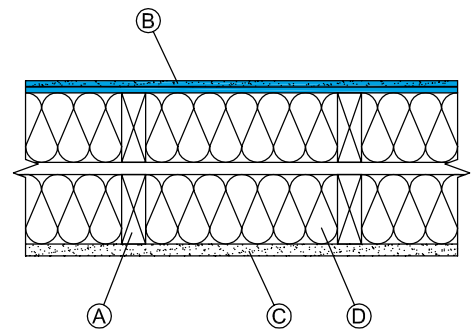
- B** 5/8" [15.9 mm] SilentFX®\*\* applied with 1-1/4" [32 mm] type W screws 12" [300 mm] o.c.

**OPPOSITE SIDE**

- C** 5/8" [15.9 mm] CertainTeed Type X applied with 1-1/4" [32 mm] type W screws 12" [300 mm] o.c.  
All joints staggered.
- D** 3-1/2" [90 mm] CertainTeed Thermal & Acoustical Fiber Glass Insulation or equivalent.

**STC RATING**  
60  
OL 10-1017

**FIRE RATING**  
1 hr.  
UL/cUL U305  
GA WP 3370



- A** Double row 2"x4" [38x89 mm] wood studs on separate plates, 16" [406 mm] o.c. with 1" [25 mm] gap.

**ONE SIDE**

- B** Base layer 5/8" [15.9 mm] CertainTeed Type X applied with 1-1/4" [32 mm] type W screws 12" [300 mm] o.c.

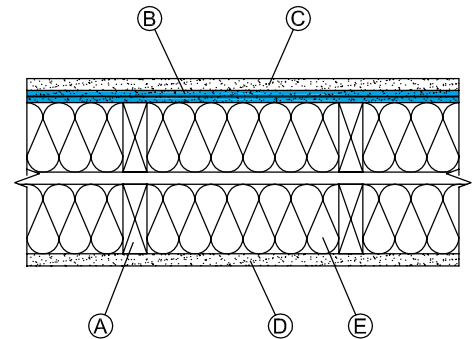
- C** Face layer 5/8" [15.9 mm] SilentFX®\*\* applied with 1-5/8" [41 mm] type W screws 12" [300 mm] o.c.

**OPPOSITE SIDE**

- D** 5/8" [15.9 mm] CertainTeed Type X applied with 1-1/4" [32 mm] type W screws 12" [300 mm] o.c.  
All joints staggered.
- E** 3-1/2" [90 mm] CertainTeed Thermal & Acoustical Fiber Glass Insulation or equivalent.

**STC RATING**  
62  
OL 10-1018

**FIRE RATING**  
1 hr.  
UL/cUL U305  
GA WP 3370



- A** Double row 2"x4" [38x89 mm] wood studs on separate plates, 24" [610 mm] o.c. with 1" [25 mm] gap.

**ONE SIDE**

- B** Base layer 5/8" [15.9 mm] CertainTeed Type X applied with 1-1/4" [32 mm] type W screws 12" [300 mm] o.c.

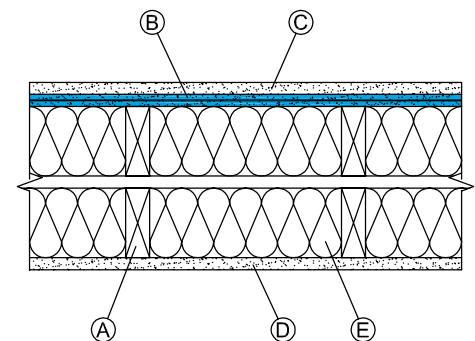
- C** Face layer 5/8" [15.9 mm] SilentFX®\*\* applied with 1-5/8" [41 mm] type W screws 12" [300 mm] o.c.

**OPPOSITE SIDE**

- D** 5/8" [15.9 mm] CertainTeed Type X applied with 1-1/4" [32 mm] type W screws 12" [300 mm] o.c.  
All joints staggered.
- E** 3-1/2" [90 mm] CertainTeed Thermal & Acoustical Fiber Glass Insulation or equivalent.

**STC RATING**  
63  
OL 10-0910

**FIRE RATING**  
1 hr.  
UL/cUL U309  
GA WP 3510



- A** 2"x4" [38x89mm] wood studs 16' [406 mm] o.c. staggered 8' [200 mm] o.c. on 6' [150 mm] plates.

**ONE SIDE**

- B** 5/8" [15.9 mm] SilentFX®\*\* applied with 1-1/4" [32 mm] type W screws 12' [300 mm] o.c.

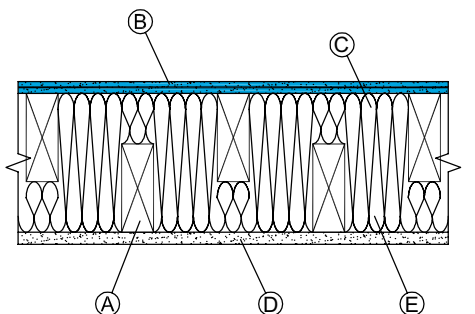
- C** 3-1/2" (90 mm) CertainTeed Thermal & Acoustical Fiber Glass Insulation or equivalent

**OPPOSITE SIDE**

- D** 5/8" [15.9 mm] CertainTeed Type X applied with 1-1/4" [32 mm] type W screws 12" [300 mm] o.c.  
All joints staggered
- E** 3-1/2" [90 mm] CertainTeed Thermal & Acoustical Fiber Glass Insulation or equivalent

**STC RATING**  
55  
OL 15-1112

**FIRE RATING**  
1 hr.  
UL/cUL U305  
UL/cUL U340  
ULC W313  
GA WP 3371



## 5/8" [15.9 MM] SILENTFX® QUICKCUT – STEEL STUD SYSTEMS

**A** 3-5/8" [92 mm] 25 ga. steel studs 24" [610 mm] o.c.

**ONE SIDE**

**B** 5/8" [15.9 mm] SilentFX®\*\* applied with 1" [25 mm] type S screws 12" [300 mm] o.c.

**OPPOSITE SIDE**

**C** 5/8" [15.9 mm] CertainTeed Type X applied with 1" [25 mm] type S screws 12" [300 mm] o.c.

All joints staggered.

**D** 3-1/2" [90 mm] CertainTeed Thermal & Acoustical Fiber Glass Insulation or equivalent.

**STC RATING**

55

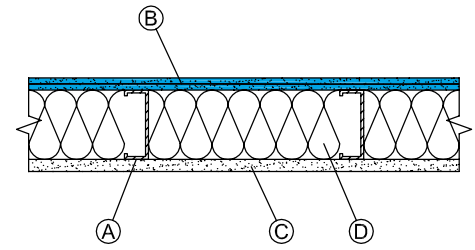
OL 15-0245

**FIRE RATING**

1 hr.

UL/cUL U465

GA WP 1081



**A** 3-5/8" [92 mm] 25 ga. steel studs 24" [610 mm] o.c.

**ONE SIDE**

**B** Base layer 5/8" [15.9 mm] CertainTeed Type X applied with 1" [25 mm] type S screws 12" [300 mm] o.c.

**C** Face layer 5/8" [15.9 mm] SilentFX®\*\* applied with 1-5/8" [41 mm] type S screws 12" [300 mm] o.c.

**OPPOSITE SIDE**

**D** 5/8" [15.9 mm] SilentFX®\*\* applied with 1" [25 mm] type S screws 12" [300 mm] o.c.

All joints staggered.

**E** 3-1/2" [90 mm] CertainTeed Thermal & Acoustical Fiber Glass Insulation or equivalent.

**STC RATING**

61

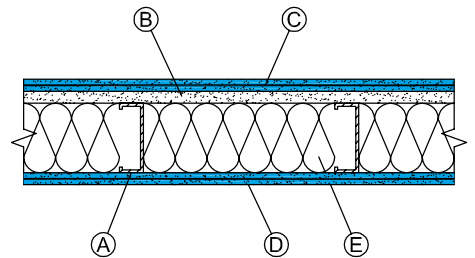
OL 11-0649

**FIRE RATING**

1 hr.

UL/cUL U465

GA WP 1081



**A** 3-5/8" [92 mm] 25 ga. steel studs 24" [610 mm] o.c.

**ONE SIDE**

**B** Base layer 5/8" [15.9 mm] SilentFX®\*\* applied with 1-1/4" [32 mm] type S screws 12" [300 mm] o.c.

**C** Face layer 5/8" [15.9 mm] CertainTeed Type X applied with 1-5/8" [41 mm] type S screws 12" [300 mm] o.c.

**OPPOSITE SIDE**

**D** Base layer 5/8" [15.9 mm] CertainTeed Type X applied with 1-1/4" [32 mm] type S screws 12" [300 mm] o.c.

**E** Face layer 5/8" [15.9 mm] CertainTeed Type X applied with 1-5/8" [41 mm] type S screws 12" [300 mm] o.c.

All joints staggered.

**F** 3-1/2" [90 mm] CertainTeed Thermal & Acoustical Fiber Glass Insulation or equivalent.

**STC RATING**

60

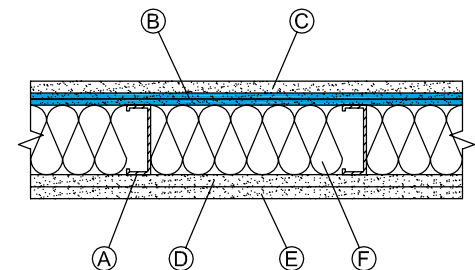
OL 10-1005

**FIRE RATING**

2 hr.

UL/cUL U411

GA WP 1524



**A** 3-5/8" [92 mm] 20 ga. steel studs 16" [406 mm] o.c.

**ONE SIDE**

**B** 5/8" [15.9 mm] SilentFX®\*\* applied with 1-5/8" [41 mm] type S screws 12" [300 mm] o.c.

**OPPOSITE SIDE**

**C** 5/8" [15.9 mm] CertainTeed Type X applied with 1-5/8" [41 mm] type S screws 12" [300 mm] o.c.

All joints staggered.

**D** 3-1/2" [90 mm] CertainTeed Thermal & Acoustical Fiber Glass Insulation or equivalent.

**STC RATING**

48

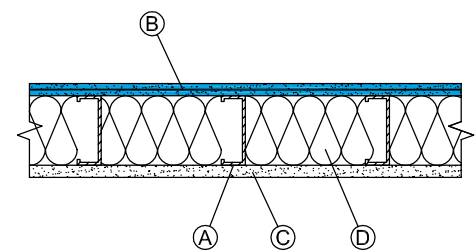
OL 11-0638

**FIRE RATING**

1 hr.

UL/cUL U465

GA WP 1081

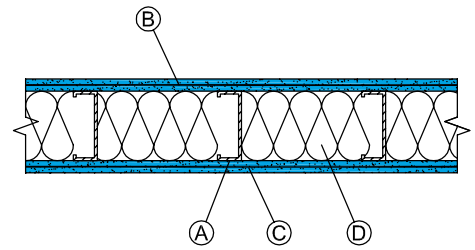




- A** 3-5/8" [92 mm] 20 ga. steel studs 16" [406 mm] o.c.
- ONE SIDE**
- B** 5/8" [15.9 mm] SilentFX<sup>®</sup>\*\* applied with 1-5/8" [41 mm] type S screws 12" [300 mm] o.c.
- OPPOSITE SIDE**
- C** 5/8" [15.9 mm] SilentFX<sup>®</sup>\*\* applied with 1-5/8" [41 mm] type S screws 12" [300 mm] o.c.  
All joints staggered.
- D** 3-1/2" [90 mm] CertainTeed Thermal & Acoustical Fiber Glass Insulation or equivalent.

**STC RATING**  
55  
OL 11-0639

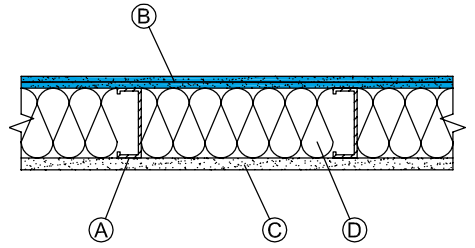
**FIRE RATING**  
1 hr.  
UL/cUL U465  
GA WP 1081



- A** 3-5/8" [92 mm] 20 ga. steel studs 24" [610 mm] o.c.
- ONE SIDE**
- B** 5/8" [15.9 mm] SilentFX<sup>®</sup>\*\* applied with 1-5/8" [41 mm] type S screws 12" [300 mm] o.c.
- OPPOSITE SIDE**
- C** 5/8" [15.9 mm] CertainTeed Type X applied with 1-5/8" [41 mm] type S screws 12" [300 mm] o.c.  
All joints staggered.
- D** 3-1/2" [90 mm] CertainTeed Thermal & Acoustical Fiber Glass Insulation or equivalent.

**STC RATING**  
54  
OL 11-0636

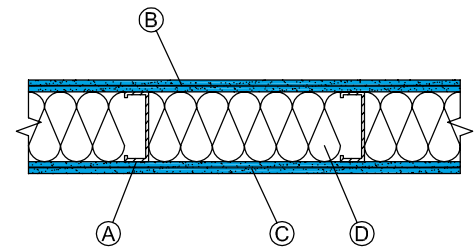
**FIRE RATING**  
1 hr.  
UL/cUL U465  
GA WP 1081



- A** 3-5/8" [92 mm] 20 ga. steel studs 24" [610 mm] o.c.
- ONE SIDE**
- B** 5/8" [15.9 mm] SilentFX<sup>®</sup>\*\* applied with 1-5/8" [41 mm] type S screws 12" [300 mm] o.c.
- OPPOSITE SIDE**
- C** 5/8" [15.9 mm] SilentFX<sup>®</sup>\*\* applied with 1-5/8" [41 mm] type S screws 12" [300 mm] o.c.  
All joints staggered.
- D** 3-1/2" [90 mm] CertainTeed Thermal & Acoustical Fiber Glass Insulation or equivalent.

**STC RATING**  
58  
OL 11-0637

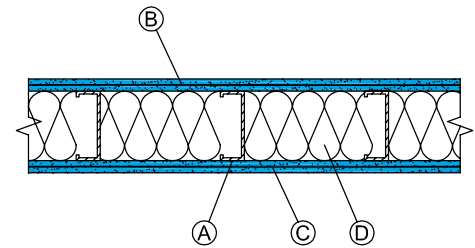
**FIRE RATING**  
1 hr.  
UL/cUL U465  
GA WP 1081



- A** 3-5/8" [92 mm] 16 ga. steel studs 16" [406 mm] o.c.
- ONE SIDE**
- B** 5/8" [15.9 mm] SilentFX<sup>®</sup>\*\* applied with 1-5/8" [41 mm] type S screws 12" [300 mm] o.c.
- OPPOSITE SIDE**
- C** 5/8" [15.9 mm] SilentFX<sup>®</sup>\*\* applied with 1-5/8" [41 mm] type S screws 12" [300 mm] o.c.  
All joints staggered.
- D** 3-1/2" [90 mm] CertainTeed Thermal & Acoustical Fiber Glass Insulation or equivalent.

**STC RATING**  
49  
OL 11-0640

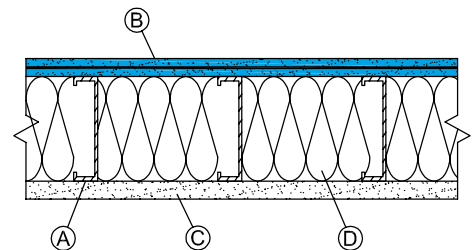
**FIRE RATING**  
1 hr.  
UL/cUL U465  
GA WP 1081



- A** 6" [152 mm] 16 ga. steel studs 16" [406 mm] o.c.
- ONE SIDE**
- B** 5/8" [15.9 mm] SilentFX<sup>®</sup>\*\* applied with 1-5/8" [41 mm] type S-12 screws 12" [300 mm] o.c.
- OPPOSITE SIDE**
- C** 5/8" [15.9 mm] CertainTeed Type X applied with 1-5/8" [41 mm] type S-12 screws 12" [300 mm] o.c.  
All joints staggered.
- D** 6" [152 mm] CertainTeed Thermal & Acoustical Fiber Glass Insulation or equivalent.

**STC RATING**  
49  
OL 11-0642b

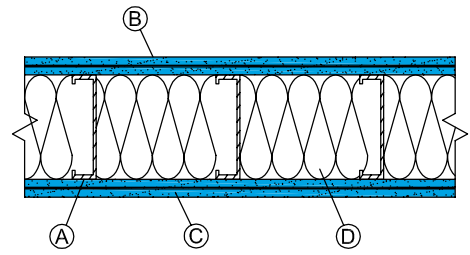
**FIRE RATING**  
1 hr.  
UL/cUL U465  
GA WP 1081



- A** 6" [152 mm] 20 ga. steel studs 16" [406 mm] o.c.
- ONE SIDE**
- B** 5/8" [15.9 mm] SilentFX®\*\* applied with 1" [25 mm] type S screws 12" [300 mm] o.c.
- OPPOSITE SIDE**
- C** 5/8" [15.9 mm] SilentFX®\*\* applied with 1" [25 mm] type S screws 12" [300 mm] o.c.  
All joints staggered.
- D** 6" [152 mm] CertainTeed Thermal & Acoustical Fiber Glass Insulation or equivalent.

**STC RATING**  
55  
OL 11-0644

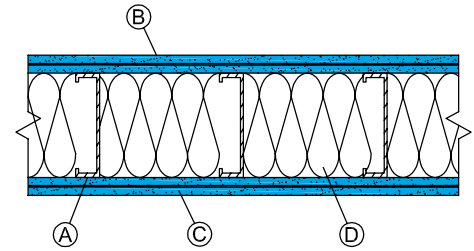
**FIRE RATING**  
1 hr.  
UL/cUL U465  
GA WP 1081



- A** 6" [152 mm] 16 ga. steel studs 16" [406 mm] o.c.
- ONE SIDE**
- B** 5/8" [15.9 mm] SilentFX®\*\* applied with 1-5/8" [41 mm] type S-12 screws 12" [300 mm] o.c.
- OPPOSITE SIDE**
- C** 5/8" [15.9 mm] SilentFX®\*\* applied with 1-5/8" [41 mm] type S-12 screws 12" [300 mm] o.c.  
All joints staggered.
- D** 6" [152 mm] CertainTeed Thermal & Acoustical Fiber Glass Insulation or equivalent.

**STC RATING**  
53  
OL 11-0643

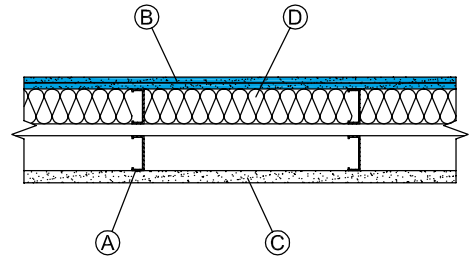
**FIRE RATING**  
1 hr.  
UL/cUL U465  
GA WP 1081



- A** Double row 2-1/2" [63.5 mm] 25 ga. steel studs 24" [610 mm] o.c., in separate tracks with a 1" [25 mm] gap.
- ONE SIDE**
- B** 5/8" [15.9 mm] SilentFX®\*\* applied with 1-1/4" [32 mm] type S screws 12" [300 mm] o.c.
- OPPOSITE SIDE**
- C** 5/8" [15.9 mm] CertainTeed Type X applied with 1-1/4" [32 mm] type S screws 12" [300 mm] o.c.  
All joints staggered.
- D** 3-1/2" [90 mm] CertainTeed Thermal & Acoustical Fiber Glass Insulation or equivalent.

**STC RATING**  
57  
OL 10-1022

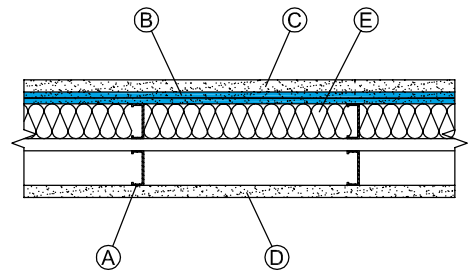
**FIRE RATING**  
1 hr.  
UL/cUL U420  
GA WP 5015



- A** Double row 2-1/2" [63.5 mm] 25 ga. steel studs 24" [610 mm] o.c., in separate tracks with a 1" [25 mm] gap.
- ONE SIDE**
- B** Base layer 5/8" [15.9 mm] SilentFX®\*\* applied with 1-1/4" [32 mm] type S screws 12" [300 mm] o.c.
- C** Face layer 5/8" [15.9 mm] CertainTeed Type X applied with 1-5/8" [41 mm] type S screws 12" [300 mm] o.c.
- OPPOSITE SIDE**
- D** 5/8" [15.9 mm] CertainTeed Type X applied with 1" [25 mm] type S screws 12" [300 mm] o.c.  
All joints staggered.
- E** 3-1/2" [90 mm] CertainTeed Thermal & Acoustical Fiber Glass Insulation or equivalent.

**STC RATING**  
63  
OL 10-1023

**FIRE RATING**  
1 hr.  
UL/cUL U420  
GA WP 5015



**NOTES**

SilentFX® QuickCut can be used as either the base or face layer in a multi-layer system without affecting the STC rating. Equivalent fiber glass insulations may be substituted for CertainTeed Insulation products.

\*Systems tested for SilentFX® are also compatible for SilentFX® QuickCut.

# Building Responsibly

**CertainTeed respects the environment through the responsible development of sustainable building products and systems.**

The building industry continues to look for ways to reduce impact on the environment while meeting customer demand for products that deliver beauty, comfort and performance.

CertainTeed's commitment to these goals is reflected here, highlighting our ongoing effort to become the preeminent supplier of green building materials.

Awareness of the importance of acoustics in sustainable construction continues to grow, and this is evident with the inclusion of sustainability requirements in many building programs and codes:

- LEED v4
  - EQ Prerequisite 3 - Schools Minimum Acoustic Performance
  - EQ Credit 9 Acoustic Performance
- Green Guide for Health Care
  - EQ Credit 9.1 Acoustic Environment
- 2015 International Green Construction Code (IgCC)
  - Section .3.3 Acoustical Control

**Review systems performance information to see how SilentFX® QuickCut systems can help contribute to these sustainable programs.**



The Health Product Declaration™ and logo is owned by the Health Product Declaration Collaborative™ and is used with permission.



SilentFX® QuickCut Noise-Reducing Gypsum Board is manufactured in nominal 1/2" (12.7 mm) and 5/8" (15.9 mm) Type X, 48" (1220 mm) width by 8' (2440 mm), 9' (2745 mm), 10' (3050 mm) and 12' (3660 mm) lengths.

## Product Specifications

Product	Product Standards	Application Standards
1/2" SilentFX® QuickCut	ASTM C1396 and C1629	ASTM C840; GA-216
5/8" SilentFX® QuickCut Type X	ASTM C1396 and C1629	ASTM C840; GA-216
	1/2" (12.7 mm)	5/8" (15.9 mm) Type X
Widths	48" (1220 mm)	48" (1220 mm)
Standard Lengths*	8' (2440 mm)	8' (2440 mm)
	9' (2745 mm)	9' (2745 mm)
	10' (3050 mm)	10' (3050 mm)
	12' (3660 mm)	12' (3660 mm)
Weight	2.1 psf (10.3 kg/m <sup>2</sup> )	2.8 psf (13.7kg/m <sup>2</sup> )
Edges	Tapered	Tapered
Flame Spread	5	5
Smoke Developed	5	5
Mold Resistance Rating** (ASTM D3273)	10	10
Abuse Resistance Classifications (ASTM C1629)		
Surface Abrasion (D 4977)	2	2
Soft Body Impact (E 695)	1	1

The performance of SilentFX® QuickCut Noise-Reducing Gypsum Board in actual use may not accurately reproduce these ASTM laboratory test results. Good design and construction practices that prevent exposure of building products to water and moisture are the most effective strategy to avoid mold growth.

\* Special lengths or edges may be available as a special order. Please contact your CertainTeed Representative.

Standard lengths may differ by region, please contact your sales rep for more information.

\*\* No mold growth detected. Note: 10 is the best possible rating for ASTM D3273.

The Health Product Declaration™ and logo is owned by the Health Product Declaration Collaborative™ and is used with permission.



### ASK ABOUT ALL OF OUR OTHER CERTAINTEED® PRODUCTS AND SYSTEMS:

ROOFING • SIDING • TRIM • DECKING • RAILING • FENCE  
**GYP SUM** • CEILINGS • INSULATION

[www.certainteed.com](http://www.certainteed.com) <http://blog.certainteed.com>

CertainTeed Corporation  
 20 Moores Road  
 Malvern, PA 19355  
 Professional: 800-233-8990  
 Consumer: 800-782-8777

©03/16 CertainTeed Gypsum.  
 CTG-2856