

COREFLEX 60 WATERPROOFING

FOUNDATION SLAB

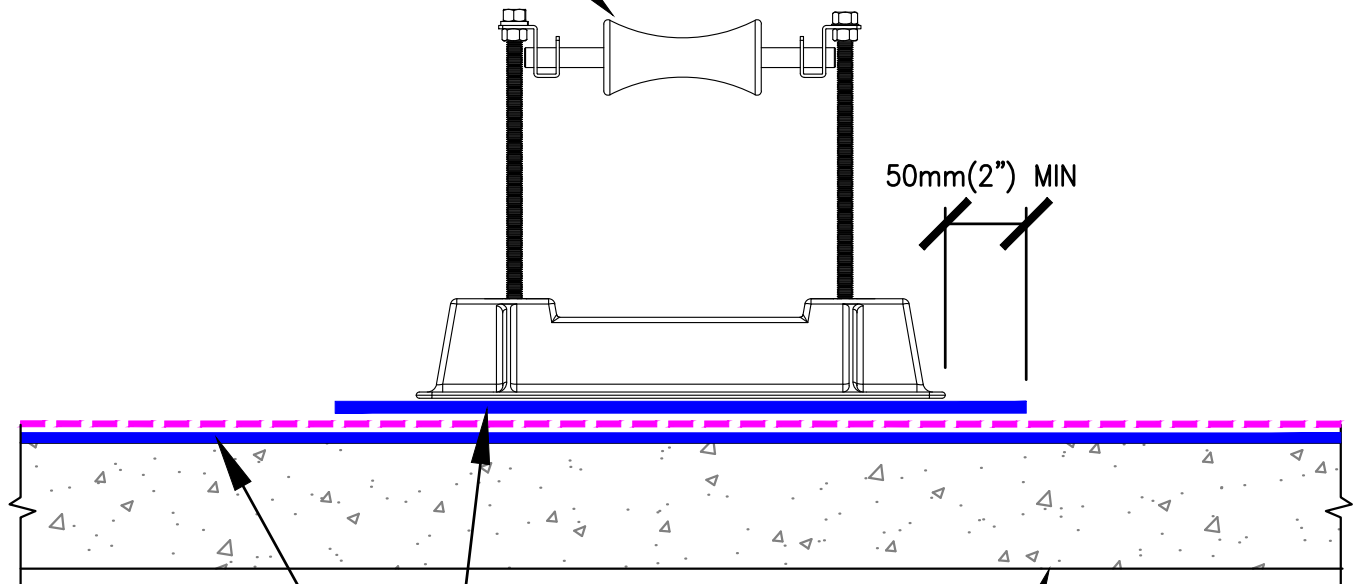
Pipe Support

CF-01

103-H

SCALE: NTS 03/18

MECHANICAL PIPE SUPPORT
(NON-PENETRATING)
SEE PLAN



COREFLEX 60 WITH
APC (DASHED LINE)
FACING INSTALLER

MUD SLAB

VOLTEX DS TARGET PATCH
UNDER SUPPORT WHEN INSTALLED
AT COREFLEX 60 WELDED OVERLAP

INSTALL UNDER SLAB COREFLEX 60 WITH YELLOW MEMBRANE SIDE DOWN

This information is based on data and knowledge considered to be true and accurate. The information is offered for the users' consideration, verification, and requires project designer's approval before installation. CETCO does not warrant the results obtained and assumes no liability for the use of the information. CETCO waterproofing membranes are not intended to seal expansion joints; contact CETCO for expansion joint applications. This information is subject to change without notice.

PROJECT NAME:



CETCO

2870 Forbs Avenue, Hoffman Estates, IL 60192 USA
tel 847.851.1800 www.cetco.com
email: detail.request@mineralstech.com

DATE ISSUED: