

# SWELLTITE WATERPROOFING

# ST-02

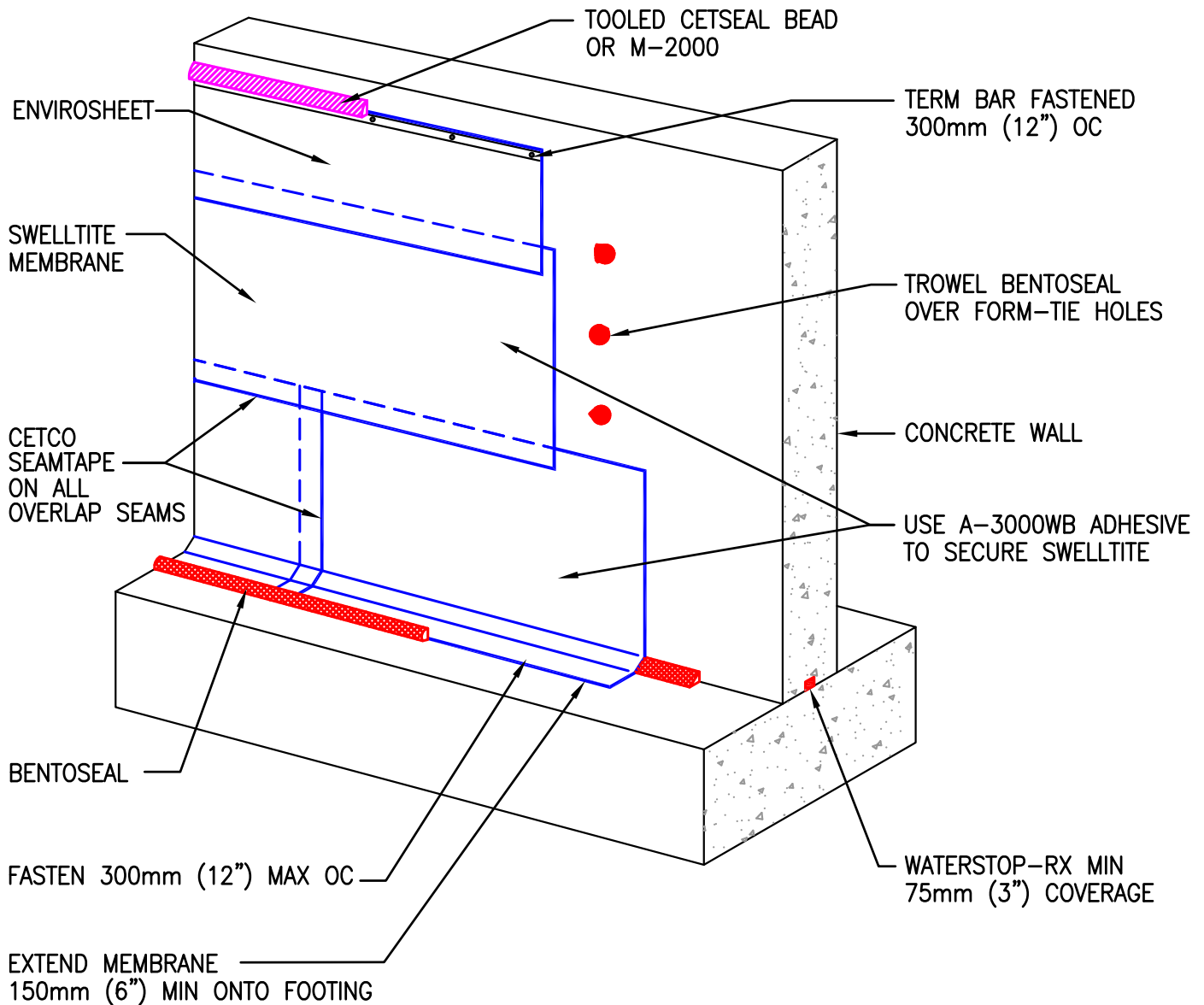
## BACKFILLED WALL

## 001-NH V02

### C-I-P Concrete Adhered Method

SCALE: NTS 09/13

(NON-HYDROSTATIC)



**INSTALL SWELLTITE WITH BENTONITE COMPOUND SIDE AGAINST CONCRETE**

This information is based on data and knowledge considered to be true and accurate. The information is offered for the users' consideration, verification, and requires project designer's approval before installation. CETCO does not warrant the results obtained and assumes no liability for the use of the information. CETCO waterproofing membranes are not intended to seal expansion joints; contact CETCO for expansion joint applications. This information is subject to change without notice.



2870 Forbs Avenue, Hoffman Estates, IL 60192 USA  
tel 847.851.1800 fax (847) 851.1371 <http://www.cetco.com>  
800.527.9948 email: [field.services@cetco.com](mailto:field.services@cetco.com)