

TW-ANCHOR

WELDABLE THERMOPLASTIC REBAR SUPPORT

DESCRIPTION

Rebar Anchor with weldable PVC Flange for supporting the dead load of the steel rebar cage concrete reinforcement.

METHOD OF APPLICATION

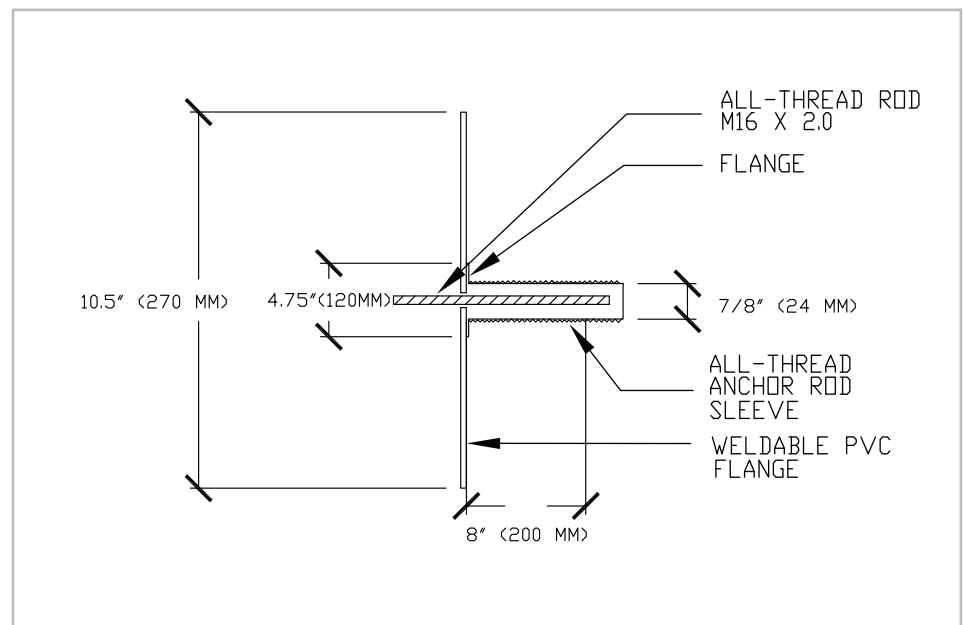
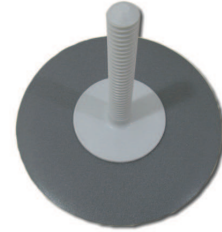
After the COREFLEX membrane is affixed to the wall, drill a 7/8" (24 mm) hole in the concrete liner 8" (200 mm) deep. Inject the hole with a solvent free thixotropic epoxy to about half the depth of the drilled hole; 4" (100 mm). Insert the TW Anchor into the hole until it seats flush. Weld the PVC flange of the TW Anchor to the COREFLEX membrane. Insert an M-16 x 2.0 all-thread rod into the TW Anchor. The length of all-thread rod and frequency of TW Anchor placement to be determined by project engineers design. Cut a round 20" (500 mm) patch of Cortex with a 5/8" (16 mm) hole in the center and place over the all-thread rod and adhere to the APC of the COREFLEX membrane with CETSEAL.

PACKAGING

Boxes with 20 pieces per box
Weight per box: 16 lbs (7.25 Kg)

PRECAUTIONS

TW Anchor must be securely fastened. Avoid membrane seams directly over TW Anchor when possible.



North America: 847.851.1800 | 800.527.9948 | www.CETCO.com

UPDATED: JUNE 2015

© 2015 CETCO. IMPORTANT: The information contained herein supersedes all previous printed versions, and is believed to be accurate and reliable. For the most up-to-date information, please visit www.CETCO.com. CETCO accepts no responsibility for the results obtained through application of this product. All products are sold on the understanding that the user is solely responsible for determining their suitability for the intended use and for proper use and disposal of the product. CETCO MAKES NO WARRANTY OF MERCHANTABILITY OR SUITABILITY FOR ANY PARTICULAR PURPOSE IN CONNECTION WITH ANY SALE OF THE PRODUCTS DESCRIBED HEREIN. CETCO reserves the right to update information without notice.



FORM: TDS_TW-ANCHOR_AM_EN_201506_V2