

VOLTEX WATERPROOFING

PROPERTY LINE WALL

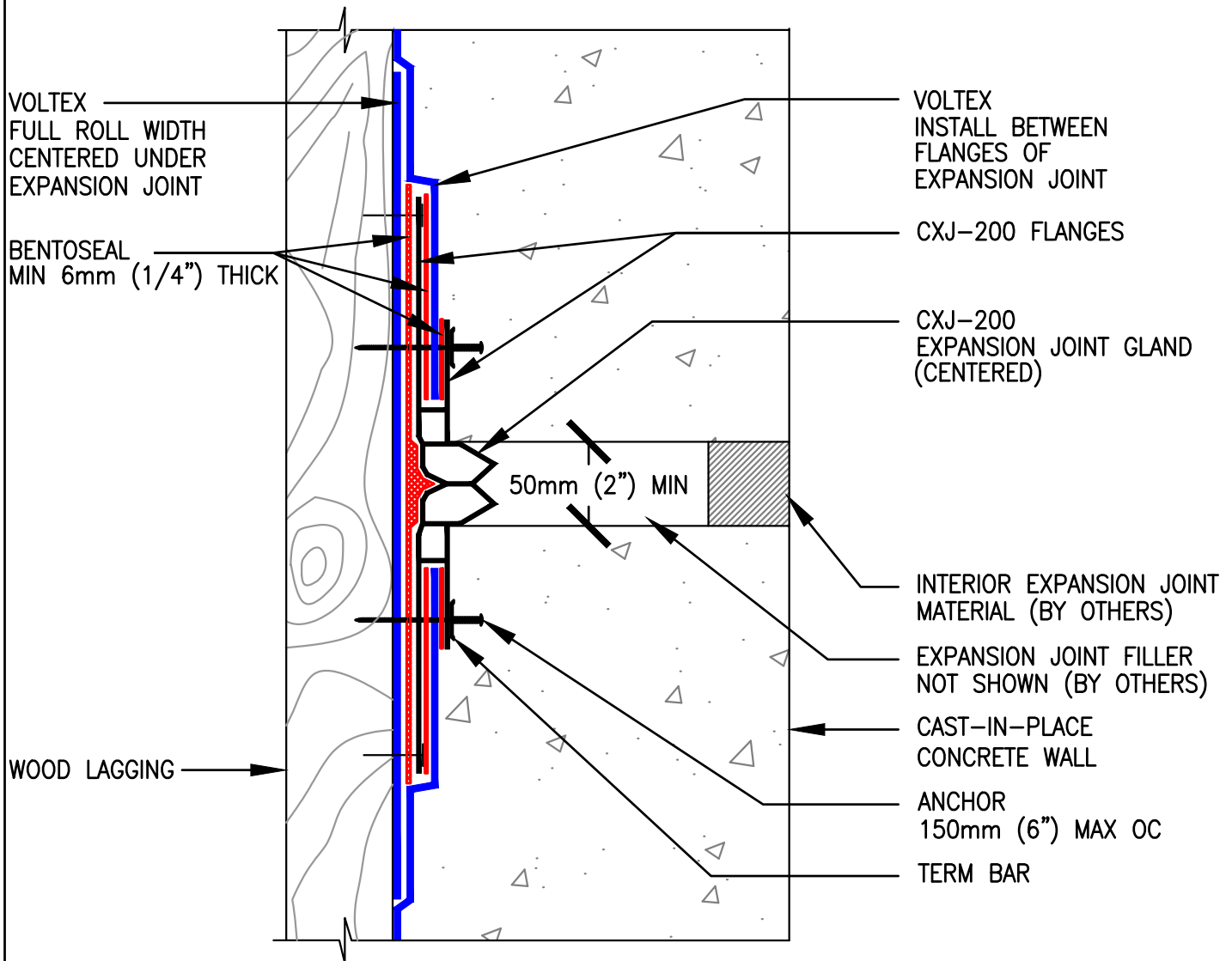
CXJ-200 Below Grade Expansion Joint

VT-03

501-H V1

SCALE: NTS 01/20

PLAN VIEW



INSTALL VOLTEX WITH DARK GRAY (WOVEN) GEOTEXTILE FACING INSTALLER

This information is based on data and knowledge considered to be true and accurate. The information is offered for the users' consideration, verification, and requires project designer's approval before installation. CETCO does not warrant the results obtained and assumes no liability for the use of the information. CETCO waterproofing membranes are not intended to seal expansion joints; contact CETCO for expansion joint applications. This information is subject to change without notice.



CETCO

2870 Forbs Avenue, Hoffman Estates, IL 60192 USA
tel 847.851.1800 www.cetco.com
email: detail.request@mineralstech.com