

#15 Double-V Control Joint (VVJZ)

Corrosion resistant expanded flange control joint

#15 Expanded Flange Control Joint (Double-V) is used to relieve stresses in large plastered areas of walls, ceilings, and stucco areas. The Double-V Control Joint counteracts the inherent shrinkage during stucco curing and general thermal changes and provides a higher degree of corrosion resistance than the galvanized steel version. This nearly inconspicuous, expanded wing control joint minimizes cracking and assures proper plaster and stucco thickness.

- Ground heights include 3/8" for thin coat plaster and 1/2", 3/4" and 7/8" for conventional plaster applications.
- Follow use provisions outlined in ASTM C1063.
- The #15 Double-V Control Joint is also available in galvanized steel for instances when increased corrosion resistance is not required.

Material: .018 99.97% pure Zinc, compliant with ASTM B-69
 Also available in G-60 Hot-Dipped Galvanized Steel
 Dimensions: Nominal 2-7/8" Full Wing Flange

Ground	Length	Pcs./Ctn.	Ft./Ctn.	Wt./Ctn.	Ctn./Skid
1/2"	10'	24	240	54 lbs.	27
3/4"	10'	24	240	69 lbs.	30
7/8"	10'	24	240	76 lbs.	30

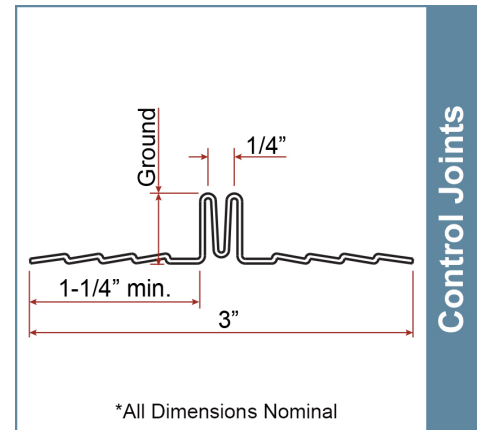
Product Data & Ordering Information:

- ASTM C1063
- Zinc meets or exceeds requirements of ASTM B69
- Installation: ASTM C841 (interior), C1063 (exterior) and EMLA-920
- SDS & Product Certification Information is available at www.clarkdietrich.com/SupportDocs

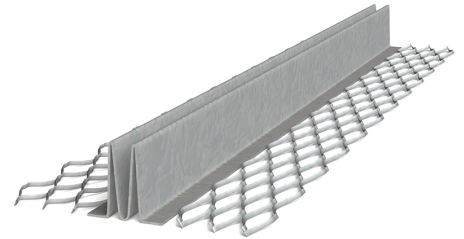
ASTM & Code Standards:

All stored materials shall be kept dry. Materials shall be stacked off the ground, supported on a level platform, and protected from the weather and surface contamination conforming to ASTM C1063.

09.22.36 (Metal Lath)



Control Joints



Project Information

Name:
Address:

Contractor Information

Name:
Contact:
Phone:
Fax:

Architect Information

Name:
Contact:
Phone:
Fax: