

3/4" Bullnose 3-Way Outside Corner Cap Corner and Transition Caps

3-way 3/4" bullnose 90° corner caps provide the ideal solution to finish corners quickly and efficiently at three-way 90° 3/4" bullnose intersections. This corner cap features extended tabs for easier alignment and a professional finish, and it works well with both metal and vinyl bullnose corner beads.

Bullnose corner cap eliminates the need for special corner bead applications and time-consuming mitering.

Product Data & Ordering Information:

Material: PVC (Polyvinyl Chloride)
 Dimensions: 3/4" Radius

Product code	Radius	Style	Pcs./Ctn.
M385	3/4"	3-Way Corner Cap	50

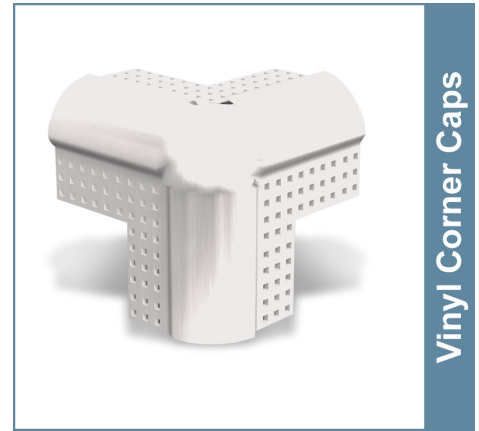
ASTM & Code Standards:

- ASTM C1047 - Standard Specification for Accessories for Gypsum Wallboard and Gypsum Veneer Base
- ASTM D3678 Class 2 materials
- Installation: ASTM C840 & C841 (Interior Finishes)
- SDS & Product Certification Information is available at www.clarkdietrich.com/SupportDocs

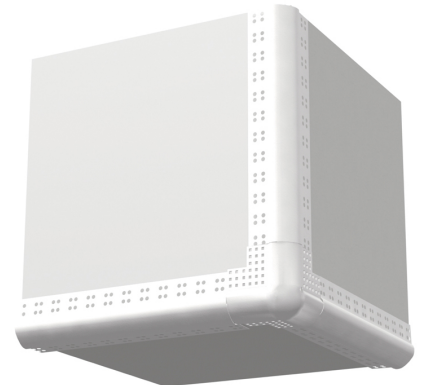
Storage:

All stored materials shall be kept dry. Materials shall be stacked off the ground, supported on a level platform, and protected from the weather.

09.22.00 (Support for Plaster & Gypsum Board)



- Rust proof and dent resistant
- Eliminates costly mitering of corners
- Easy to install
- Works with metal and vinyl bullnose corner beads



Project Information

Name:
Address:

Contractor Information

Name:
Contact:
Phone:
Fax:

Architect Information

Name:
Contact:
Phone:
Fax: