

3/4" Channel Clip (CC33)

33mil (20 Gauge) 3/4" U-Channel Lateral Bracing Clip

The ClarkDietrich CC33 clip is used to secure U-Channel or Cold Rolled Channel (CRC) to non-structural wall studs. The wall stud friction fit design allows for as little as one screw for the connection to the U-Channel. The CC33 clip is a stiffened, G90 galvanized steel clip that's tested and designed to facilitate the rapid, efficient installation of 3/4" U-Channel lateral bracing for non-structural interior wall framing constructed of ProSTUD® Drywall Framing or non-structural studs.

CC33 clips are fastened using #8 self-drilling screws driven through the clip hole into the U-Channel. More than one screw may be needed depending on design. Design loads & tables can be found at: www.clarkdietrich.com/CC33

- The CC33 clip should not be used in studs over 6" wide
- US Patent No. D822,455

Product Data & Ordering Information:

Material: 33ksi yield Strength
 Coating: G90
 Thickness: 20ga (33mil), 0.0346" Design Thickness, 0.0329" Min. Thickness
 Dimensions: Made to fit over 3/4" U-channel and inside a drywall punch-out
 Packaging: 200 pieces per bucket
 Product Weight: 0.12 lb/piece

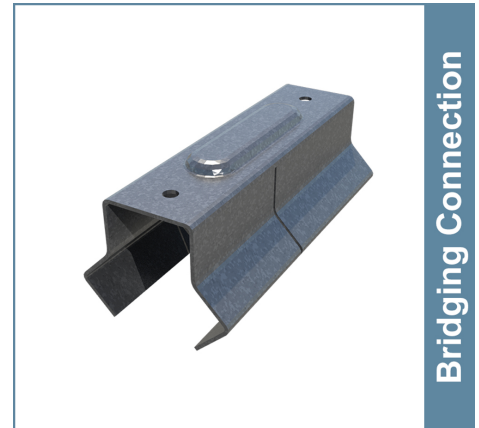
ASTM & Code Standards:

- Galvanized coating meets or exceeds requirements of ASTM C645
- Steel meets or exceeds mechanical and chemical requirements of ASTM A1003
- SDS & Product Certification Information is available at www.clarkdietrich.com/SupportDocs

Alternative Products:

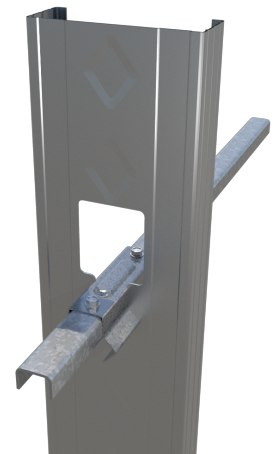
- SwiftClip™ (LS-Series)
- Spazzer® 9200 Spacing Bar

09.22.16 (Non-Structural Metal Framing)



Bridging Connection

- 33mil (20ga) light-duty clip for use with 15mil to 33mil non-structural studs



Sustainability Credits:

For more details and LEED letters contact Technical Services at 888-437-3244 or visit www.clarkdietrich.com/LEED

LEED v4 MR Credit -- Building Product Disclosure and Optimization: EPD (1 point) - Sourcing of Raw Materials (1 point) - Material Ingredients (1 point) - Construction and Demolition Waste Management (up to 2 points) - Innovation Credit (up to 2 points).

LEED 2009 Credit MR 2 & MR 4 -- ClarkDietrich's steel products are 100% recyclable and have a national average recycled content of 34.2% (19.8% post-consumer and 14.4% pre-consumer). If seeking a higher number to meet Credit MR 5, please contact us at (info@clarkdietrich.com / 888-437-3244)

Project Information

Name:
Address:

Contractor Information

Name:
Contact:
Phone:
Fax:

Architect Information

Name:
Contact:
Phone:
Fax: