



**STRONGER
THAN STEEL.SM**

INTERIOR FIRE-RATED SYSTEMS

SHAFTWALL AND STAIRWALL SYSTEMS

Tested, approved assemblies with unprecedented flexibility.

What makes the ClarkDietrich shaftwall construction system unique is that it has been tested with almost every gypsum board and shaftliner manufacturer in the country. Other systems may only test with one type of gypsum board and shaftliner. Unlike competing systems, the ClarkDietrich C-T stud and J-Tabbed track system provide maximum flexibility, allowing you to choose from a variety of board manufacturers. This unprecedented flexibility means quick availability of product at economical costs.

Shaftwall System consists of 1" shaftliner panels supported by 2-1/2", 4" or 6" C-T studs and faced on one side with varying layers of 1/2" Type C or 5/8" Type X gypsum board.

Stairwall Systems are designed to enclose stairwells, and are finished on both sides with varying layers of 1/2" Type C or 5/8" Type X gypsum board.

Gypsum shaftwall assemblies can be installed from the exterior of the shaft at each floor, eliminating the need for scaffolding within the shaft.



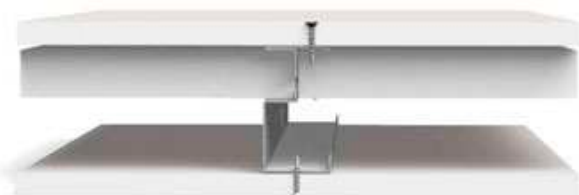
LIFE SAFETY & FIRE-RESISTANT PROTECTION

Shaftwall systems are non-load bearing, fire-rated wall assemblies that provide critical, life safety, fire-resistance protection for elevator shafts, stairwells, vertical chases and mechanical enclosures. Shaftwalls in elevators and stairwells provide protection for the only means of evacuation from the building in an emergency—making them one of the most important wall assemblies in a building. Vertical chases and mechanical enclosures keep vital communication, power, water, fresh air and exhaust systems intact when a fire occurs.

CONSTRUCTION METHODS

Cavity shaftwalls are constructed utilizing one of two methods: masonry/CMU or light-gauge steel and gypsum. Gypsum drywall shaftwall construction has become the preferred and most widely used method of construction for shaftwalls. These shaftwalls are lightweight, install faster, and provide lower in-place costs. They also significantly reduce structural framing and foundation costs, and are easy, quick and clean to install.

Masonry shaftwalls in high-rise buildings historically weigh between 20 and 45 lbs. per square foot, compared to gypsum assemblies that weigh between 10 and 13 lbs. per square foot, thus achieving a substantial weight reduction.



Stairwall



Shaftwall

ClarkDietrich Slotted C-T Studs and J-Tabbed Track.

Slotted C-T Shaftwall/Stairwell framing members and J-Tabbed track are interior framing members manufactured in accordance with ASTM C645 from cold-formed galvanized steel conforming to ASTM A1003, or other steel complying with AISI Specifications having a minimum yield strength of 33,000 or 50,000 psi. The galvanization coating shall be an ASTM A653-G40 or shall provide equivalent corrosion protection as permitted in specification ASTM C645.

The C-T stud provides a cavity for services. The stud has 1" circular cutouts approximately 12" o.c. for horizontal service lines. Studs are friction-fitted between top and bottom of the J-Tabbed tracks. Use J-Tabbed tracks for all closure details,

including duct and door openings, abutments, intersections, etc. This system has been designed with only two components for convenience of installation. No other special metal components are required. Studs are automatically spaced 24" o.c. maximum once 1" shaftliner panels are friction fit snugly into studs.

C-T Cavity Shaftwall System limiting heights are acceptable for use with the following manufacturers: American Gypsum; CertainTeed Corporation; Continental Building Products; Georgia-Pacific Gypsum; National Gypsum; PABCO Gypsum; and United States Gypsum.

Check the specific fire or sound assembly to be constructed for the details required to achieve the desired rating.

C-T SHAFTWALL/STAIRWELL STUD



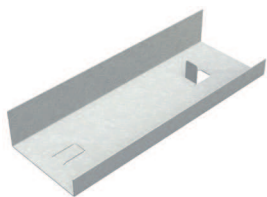
Engineered to maintain shaftwall integrity, ClarkDietrich C-T cavity shaftwall studs are punched with 1" circular knockouts at 12" o.c. for easy installation of conduit or other mechanical service lines.

Independent laboratory tests have demonstrated that the slotting in the web improves resistance to thermal and noise transmissions.

Product code	Thickness			Stud depth (in)
	Gauge	Mils	Design thickness (in)	
CTN2	25	21	0.0231	2-1/2
CTE2	20	33	0.0346	2-1/2
CTN4	25	21	0.0231	4
CTE4	20	33	0.0346	4
CTM4	18	43	0.0451	4
CTE6	20	33	0.0346	6
CTM6	18	43	0.0451	6

NOTE: 18ga only available in select markets.
18ga is for interior systems only.

J-TABBED TRACK/J-RUNNER



ClarkDietrich J-Tabbed track is used at the floor and ceiling in shaftwall assemblies. C-T studs and gypsum shaftliner panels are friction fit between the top and bottom J-Tabbed track. J-Tabbed tracks have unequal legs with the longer leg (available in 2-1/4" and 3") installed toward the shaft. The leg provides a backstop for easy installation of the shaftliner. Three-inch leg track is typically used as jamb struts around closure details, including duct and door openings, abutments and intersections.

ClarkDietrich J-Tabbed track is punched with fold-up tabs every 12", permitting faster, more efficient installation and eliminates the need for additional screws.

Product code	Thickness			Size	
	Gauge	Mils	Design thickness (in)	Width (in)	Leg (in)
TTN (2,3)*	25	21	0.0230	2-1/2	2-1/4
					3
				4	2-1/4
TTE (2,3)*	20	33	0.0346	2-1/2	3
					2-1/4
					3
				4	2-1/4
					3
				6	2-1/4
TTN (2,3)*	18	43	0.0451	4	3
					2-1/4
				6	3

*2 designates 2-1/4" leg; 3 designates 3" leg.

NOTE: 18ga only available in select markets.
18ga is for interior systems only.

STUD DESIGN PROPERTIES

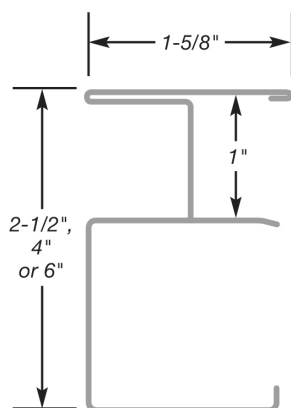
SHAFTWALL

A 2-hour fire-resistive, non-load bearing non-combustible partition designed to enclose shaftwalls, containing elevators, ducts, piping, air shafts and similar construction applications.

System consists of 1" shaftliner panels supported by 2-1/2", 4" or 6" C-T studs and faced on one side with two layers of 1/2" Type C or 5/8" Type X gypsum board.



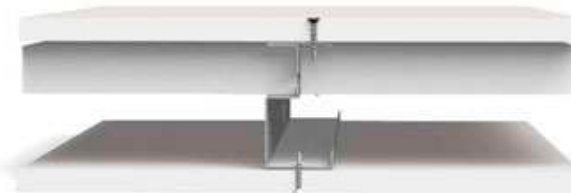
Shaftwall



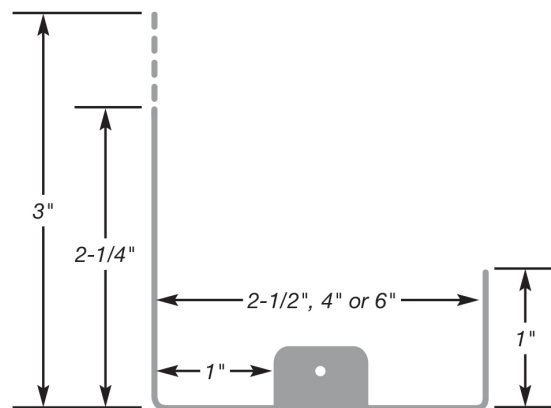
C-T Stud

STAIRWALL

Designed to enclose stairwalls, this system is finished on both sides with a single layer of 1/2" Type C or 5/8" Type X gypsum board.



Stairwall



J-Tabbed Track

HELPFUL HINTS

- Precut C-T studs 3/4" less than the opening's height between top and bottom J-Tabbed track.
- In structural steel-frame construction, install perimeter J-Tabbed track sections before applying spray-on fireproofing.
- Items to be anchored to the wall (cabinets, sinks, handrails, etc.) should be fastened to steel plates secured behind or between layers of gypsum.
- Use Type S screws for 25ga steel framing. Use Type S-12 screws for 20ga (or heavier) steel framing.
- It is important that the authority having jurisdiction approve the type, size, and maximum spacing of track fasteners to meet the design load requirements.
- 18ga C-T studs are for interior systems only.

LIMITATIONS OF USE

- Shaftwall assemblies are designed as simple span non-load bearing interior partitions only. Do not stack walls.
- Do not install in areas which will be adjacent to occupancies of unusually high moisture conditions.
- Provide control joints so that maximum length of continuous partition is 30 feet. Wherever possible, the partition control joints should coincide with those in the building structure.
- Elevator door frames should be supported independently of the shaftwall. However, interfacing of elevator frame to shaftwall system may require attachment with jamb clips and/or grouting.
- Where penetrations occur in the partitions, additional reinforcement at corners may be necessary to distribute stresses if control joints are not used and if excessive loads need to be supported.
- To prevent air movement and resulting "whistling", the partition perimeters, as well as all penetrations, should be sealed with a non-hardening sealant.
- Finishing of all joints in face layers should be done within temperature limitations of the specific joint treatment used.
- Not recommended for use as an unlined HVAC supply shaft or duct.
- Hollow cavities must be fire stopped at each floor.
- Do not splice C-T studs or J-Tabbed tracks.

INSTALLATION PROCEDURES

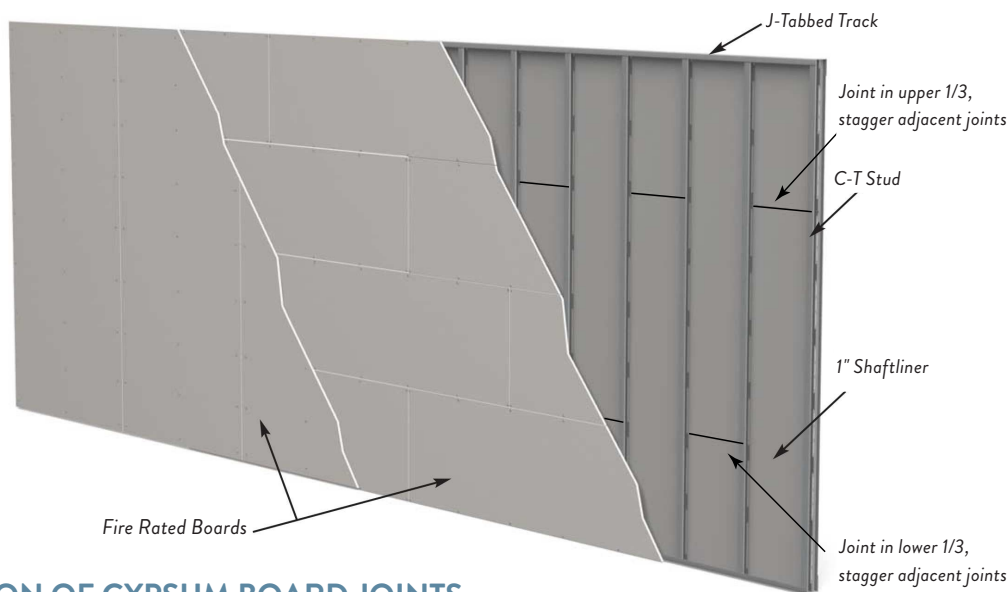
VERTICAL SHAFTWALLS

1. Layout per construction drawings. Secure J-Tabbed track at perimeter framing and plumb to ceiling, floor and sides. Attached with suitable fasteners, spaced not more than 24" o.c. Apply a bead of non-hardening, flexible sealant to the perimeter.
2. Pre-plan the stud layout 24" o.c. and adjust the spacing at either end so the end studs will not fall closer than 12" from the end.
3. Maximum spans are as shown on page 7.
4. Erect the first 1" Shaftliner panel, cut $3/4$ "-1" less than the total height of the framed section. Plumb the panel against the web of the J-Tabbed track and bend out tabs in J-Tabbed track to secure panels in place. If tabs are not used, screw the liner panel to the J-Tabbed track.
5. Insert C-T stud, cut $3/4$ " less than overall height, into the top and bottom J-Tabbed tracks and fit tightly over previously installed 1" panel. Allow equal clearance between top and bottom J-Tabbed track.
6. Install the next 1" Shaftliner inside the J-Tabbed track and within the tabs of the C-T stud.
7. Progressively install succeeding studs and panels as described above until the wall section is enclosed. The final panel section

may be secured with tabs from the J-Tabbed track at 12" o.c. If tabs are not used, screw the liner panel to the J-Tabbed track.

8. Where wall heights exceed the standard or available length of shaftliner panels, the panels may be cut and stacked with joints occurring within the top or bottom third points of the wall. Joints of adjacent panels should be alternately staggered to prevent a continuous horizontal joint. Any butt joints must be factory edge to factory edge with pieces pushed tightly together. Gypsum panels must engage a minimum of 2 tabs of the C-T stud.
9. C-T studs cannot be spliced. They must be installed full height, one piece. J-Runners when not attached to the structure shall not be spliced.
10. Do not attach J-Runners to the C-T studs.
11. For doors, ducts or other large penetrations or openings, install J-Tabbed track as perimeter framing. Use 20 gauge track with a 3" back leg for elevator doors and block cavity with 12" wide gypsum filler strips for doors exceeding 7'-0" height.

Note: Check details of fire assembly for orientation and attachment details for gypsum boards.



LOCATION OF GYPSUM BOARD JOINTS

1. Shaftliner panels may be abutted (spliced or stacked) within the cavity as shown in the drawing above. The shorter panel should be at least two feet long or of sufficient length to engage two stud tabs on each panel edge. NOTE: In addition, some local codes may also require that these splices be back-blocked with a 12" x 24" piece of gypsum even though the tests were performed with these joints unblocked. Also, back blocking may be done with a C-T stud of proper length and placed horizontal. Please check with your local jurisdiction.
2. For the shaftwall system, finished one side, install the first layer of $1/2$ " Type C or $5/8$ " Type X gypsum board horizontally with 1" Type S screws spaced 24" o.c. and 3" from all edges. The horizontal joints must be offset from any splice joints in the shaftliner panels by at least 12".

3. Install the face layer of board parallel to framing with $1-5/8$ " Type S screws spaced 12" o.c. at all framing members maintaining a 6" edge distance. All edge and end joints should be offset from the base layer by 24".

4. For the stairwall system, finished both sides, each side must be installed vertically with 1" Type S screws spaced 12" o.c. maintaining a 3" distance from edge. Offset edges and ends on opposite sides 24" o.c.

5. Caulk all perimeter edges and abutments with dissimilar materials, and penetrations in the facing layers with a non-hardening flexible sealant approved for this use.

6. All joints on face layers are to be taped and finished and fastener heads finished with joint compounds meeting ASTM C475 specification.

NOTE: Check the specific fire or sound assembly to be constructed for the details required to achieve the desired rating.

1. Horizontal ceiling applications are not designed for any live load, mechanical equipment, or for any storage load.
2. Maximum spans are as shown on page 7.
3. The corridor ceiling or stair soffit horizontal assembly is constructed from the floor.
4. J-Tabbed track (Item ①) is first secured to all corridor walls or stair stringer framing around the perimeter of the ceiling or stair soffit to be protected.
5. The J-Tabbed track (Item ①) will be at a minimum:
 - a. 33mil, 0.0346in (20ga) thickness for 25ga and 20ga C-T studs (Item ③)
 - b. 43mil, 0.0451in (18ga) thickness for 18ga C-T studs (Item ③)
6. The J-Tabbed track (Item ①) is positioned with the shorter 1 inch long leg of the track facing the floor.
 - a. Fasteners are placed through the web of the J-Tabbed track to the supporting structure.
 - b. Mechanical fasteners shall be spaced a maximum of 24in o.c. along the length of the J-Tabbed track to the supporting structure.
 - c. The track to perimeter wall connection (Item ⑤) shall be detailed by the designer to provide a minimum of 200 lbs. of shear capacity for every C-T stud location.
7. 1 inch (thick) x 24 inches (wide) gypsum shaftliner panels (Item ④) are inserted in the J-Tabbed track (Item ①) towards the ceiling (2 inch leg of the J-Tabbed track).
 - a. Measure the overall dimensions of the opening and determine if the first 1 inch shaftliner installed should be cut lengthwise so that the final shaftliner panel is not less than 8 inch in width.
 - b. The first liner panel will be secured to the J-Tabbed track by using #6 x 1-5/8" drywall screws 12in o.c. and at each end through the longer leg of the J-Tabbed track.
8. C-T stud (Item ③) of the required depth and thickness will be positioned so that it secures the free edge of the first shaftliner panel within the "T" portion of the C-T stud.
9. Do not splice C-T studs. Use only full length pieces of the proper length.
10. Both ends of the C-T stud (Item ③) will be secured to both flanges of the J-Tabbed track using a minimum 1/2" long #8 pan-head screw (Item ⑥).
11. The sequence of alternating placement of shaftliner panels (Item ④) and C-T studs (Item ③) will continue with each C-T stud engaging the long edges of the 1 inch shaftliner panels.
12. The end of each 1 inch shaftliner panel within the perimeter J-Tabbed track is fastened to the J-Tabbed track flange with three #6 x 1 5/8" Type S screws (12in o.c.).
13. Liner panels may be cut; butt the factory ends of the liner panels. The butt joints shall occur within the outermost one third points of the span. Joints in adjacent liner panels shall be alternately staggered to prevent a continuous joint.
14. Secure the last liner panel to the J-Tabbed track by using #6 x 1-5/8" drywall screws 12in o.c. and at each end through the longer leg of the J-Tabbed track.
15. For a two-hour assembly two layers of 1/2" Type C or 5/8" Type X gypsum board (Item ②) should be installed at right angles to the framing members. Install the inner layer with #6 (Item ⑦) x 1" Type S drywall screws, 24in o.c., starting 3" maximum from the ends of the C-T studs. Butt joint of adjacent panels should be centered on a stud flange. Install the outer layer of 1/2" Type C or 5/8" Type X gypsum board with #6 (Item ⑦) x 1-5/8" Type S drywall screws, 12in o.c. in the field and at the perimeter. Offset the board joints a minimum of one stud spacing (24") between layers.
16. Caulk the perimeter edges and abutments with dissimilar materials and any penetrations with a non-hardening flexible sealant (Item ⑧).
17. All joints on the outer layer shall be taped and finished and fastener heads finished with joint compounds meeting ASTM C475.

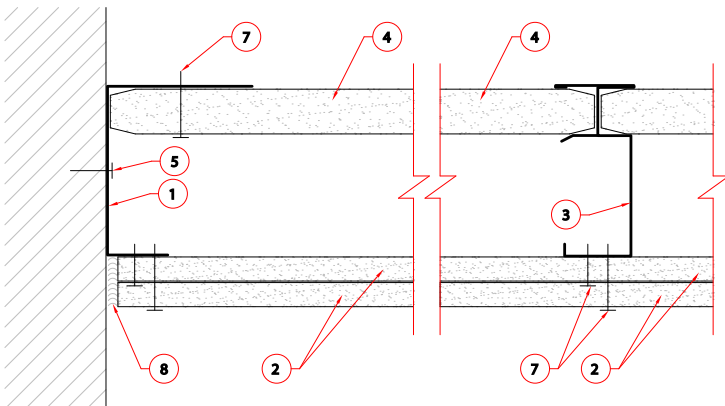


Figure 1 - Two (2) Hour Assembly

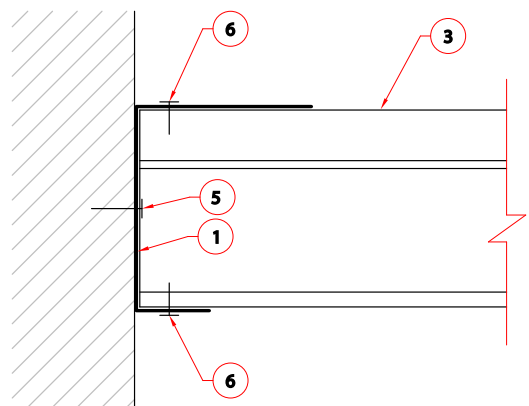


Figure 2 - C-T Stud to J-Tabbed Track Connections

LIMITING HEIGHTS TABLE

C-T STUD LIMITING HEIGHTS : PER ICC-ES AC 86 1995

Stud Depth	Gauge	Yield Strength (psi)	Design Thickness (in)	Design Deflection Limit	Limiting Height (feet - inches) Design Pressure (psf)			
					5 psf	7.5 psf	10 psf	15 psf
2-1/2"	25	33,000	0.0231	L/120	16' 10"	13' 8"	11' 10" *	8' 6" *
				L/180	13' 8"	11' 3"	9' 10"	8' 3"
				L/240	11' 10"	9' 10"	8' 8"	7' 3"
				L/360	9' 10"	8' 3"	7' 3"	6' 2"
	20	33,000	0.0346	L/120	16' 10"	14' 4"	12' 11"	11' 1"
				L/180	14' 4"	12' 4"	11' 1"	9' 6"
				L/240	12' 11"	11' 1"	9' 11"	8' 7"
				L/360	11' 1"	9' 6"	8' 7"	7' 5"
4"	25	33,000	0.0231	L/120	21' 8"	16' 6" *	12' 5" *	8' 3" *
				L/180	18' 1"	15' 3"	12' 5" *	8' 3" *
				L/240	16' 0"	13' 7"	12' 1"	8' 3" *
				L/360	13' 7"	11' 6"	10' 4"	8' 3" *
	20	33,000	0.0346	L/120	23' 0"	21' 0"	18' 7"	15' 5" **
				L/180	21' 0"	17' 9"	15' 10"	13' 6"
				L/240	18' 7"	15' 10"	14' 1"	12' 1"
				L/360	15' 10"	13' 6"	12' 1"	10' 4"
	18*	50,000	0.0451	L/120	25' 7"	22' 2"	20' 0"	17' 4"
				L/120	22' 2"	19' 2"	17' 4"	15' 1"
				L/240	20' 0"	17' 4"	15' 8"	13' 7"
				L/360	17' 4"	15' 1"	13' 7"	11' 10"
6"	20	33,000	0.0346	L/120	30' 3" **	24' 9" **	20' 6" *	13' 8" *
				L/180	30' 3"	24' 9" **	20' 6" *	13' 8" *
				L/240	26' 6"	22' 2"	19' 7"	13' 8" *
				L/360	22' 2"	18' 8"	16' 7"	13' 8" *
	18*	50,000	0.0451	L/120	36' 5"	30' 8"	27' 3"	23' 2"
				L/180	30' 8"	26' 0"	23' 2"	19' 9"
				L/240	27' 3"	23' 2"	20' 8"	17' 8"
				L/360	23' 2"	19' 9"	17' 8"	---

*18ga only available in select markets. (18ga is for interior systems only.)

Note:

- *Reduced for End Reaction Capacity. ** Reduced for Flexural Strength Capacity.
- The values in this table are based on testing per ICC-ES AC 86 and ASTM E72 and represent the limiting height capacity for strength using a 1.5 Safety Factor.
- Minimum base steel thickness is 95% of design thickness.
- Limiting Height values shown, were assessed from the lowest Flexural Strength value of Gypsum tested.

HORIZONTAL SPANS

MAXIMUM HORIZONTAL SPANS FOR CORRIDOR CEILINGS AND STAIRWAY SOFFITS

Stud Depth	Gauge	Yield Strength (psi)	Design Thickness (in)	2 Hour (2) 1/2" Type C + (1) 1-in Shaftliner				2 Hour (2) 5/8" Type X + (1) 1-in Shaftliner			
				L/120	L/180	L/240	L/360	L/120	L/180	L/240	L/360
2-1/2"	25	33,000	0.0231	8' 8"	8' 8"	8' 6"	7' 5"	8' 2"	8' 2"	8' 2"	7' 2"
	20	33,000	0.0346	10' 6"	10' 6"	9' 10"	8' 7"	9' 11"	9' 11"	9' 6"	8' 3"
4"	25	33,000	0.0231	11' 8"	11' 8"	11' 8"	10' 8"	11' 0"	11' 0"	11' 0"	10' 3"
	20	33,000	0.0346	14' 3"	14' 3"	14' 1"	12' 4"	13' 6"	13' 6"	13' 6"	11' 10"
	18*	50,000	0.0451	19' 1"	16' 8"	15' 2"	13' 3"	18' 5"	16' 1"	14' 7"	12' 9"
6"	20	33,000	0.0346	18' 9"	18' 9"	18' 9"	16' 10"	17' 9"	17' 9"	17' 9"	16' 3"
	18*	50,000	0.0451	22' 9"	22' 9"	20' 9"	18' 2"	20' 5"	20' 5"	20' 0"	17' 6"

*18ga only available in select markets. (18ga is for interior systems only.)

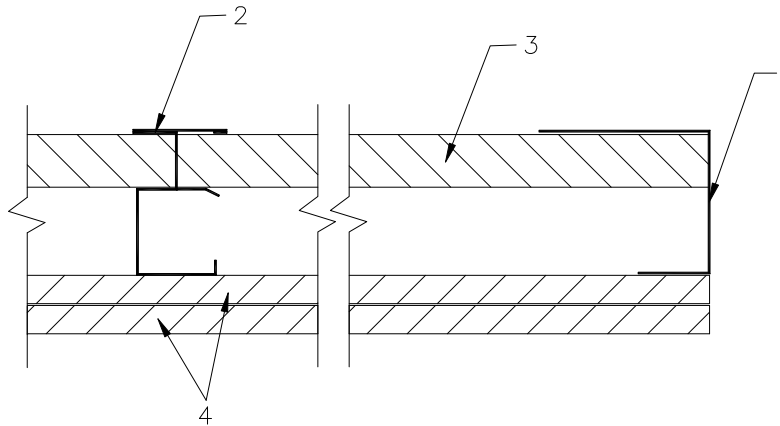
Note:

- Dead Load of assembly ONLY is considered.
- Not designed to carry any Live Loads, Mechanical equipment, Storage Loads or Lighting.
- Studs must be one piece, full span.
- Minimum base steel thickness is 95% of design thickness.

ClarkDietrich Design No. CD/WA 120-01 Wall Assembly

DESIGN NO. CD/WA 120-01
ASSEMBLY RATING - 2 HOURS, NON-BEARING SHAFTWALL, DESIGN WEIGHT - 8.5 PSF

STC	DESCRIPTION
38	As shown below.
44	As shown below and with 1-1/2" thick, 3PCF, mineral fiber insulation in cavity.
53	As shown and with 1-1/2" thick, 3 PCF, mineral fiber insulation in cavity and with ClarkDietrich 1/2" resilient channels, 24" o.c. and at right angles to studs under 1/2" or 5/8" Gypsum Board Base Layer.



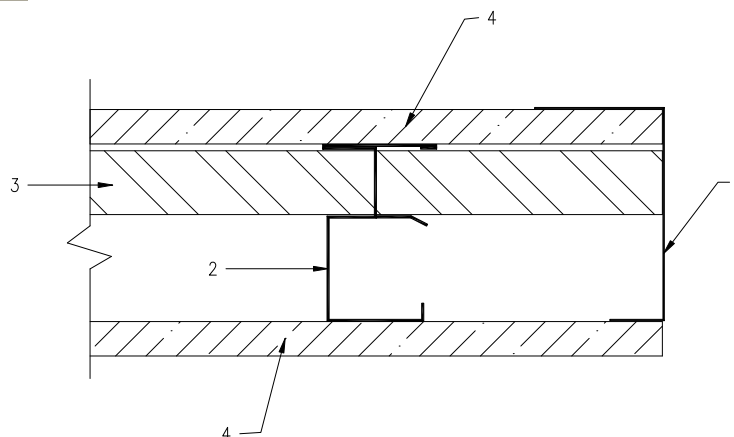
- Floor, Ceiling, Corner and Intersection Runners*:** 'J' shaped runner with unequal legs, 2-1/2" minimum deep, fabricated from minimum 0.019" thick galvanized steel. Position runners with short leg towards room side of wall. Runners attached to structural members with steel fasteners located not greater than 24" o.c. Runners are manufactured by ClarkDietrich Building Systems.
- Steel Studs*:** 'C-T' shaped slotted web studs, 1-1/2" wide by 2-1/2" minimum deep, fabricated from minimum 0.019" thick galvanized steel. Cut to length 1/2" less than the opening's height and spaced 24" maximum o.c. and between 1" thick gypsum shaftliner panels. Studs are manufactured by ClarkDietrich Building Systems.
- Gypsum Shaftliner:** 1" thick Georgia-Pacific Gypsum LLC Shaft Liner Type X*, Georgia-Pacific Gypsum LLC DensGlass Ultra Shaft Liner Type X*, Gold Bond Shaftliner, James Hardie Gypsum Hardierock Type X Shaftliner*, Continental Building Products Firecheck Shaftliner* or USG Shaft Wall Liner, supplied in nominal 24" widths. The panels are inserted against the long leg of the 'J' runners and into the 1" deep recess of the studs. Free edges of end panels are retained by bending 'J' runner tabs (12" o.c.) at a 90° angle.
- Gypsum Board:** 1/2" thick Georgia-Pacific Gypsum LLC Fireguard C, Georgia-Pacific Gypsum LLC DensArmor Plus Fireguard C*, Gold Bond Fireshield Wall Board G, James Hardie Gypsum Superfire X Hardierock, Continental Building Products Firecheck Type C, USG Firecode C Sheetrock or 5/8" thick Type X Gypsum applied in two layers on the room side. The base layer is applied horizontally with 1" drywall screws 24" o.c., starting 3" from the top and bottom. Face layer is applied vertically with 1-5/8" screws 12" o.c., starting 6" from the top and bottom. Outer layer joints are finished with paper tape and joint compound. Exposed screw heads are finished with joint compound.
Limitations: Gypsum Shaftliner and Gypsum Board must be by same manufacturer. Heights shall not exceed those in the table within these listings.

*Component bearing the Warnock Hersey Certification Mark, manufacturing information of these components is proprietary to the listed component's manufacturer.

ClarkDietrich Design No. CD/WA 120-02 Wall Assembly

DESIGN NO. CD/WA 120-02
ASSEMBLY RATING - 2 HOURS, NON-BEARING STAIRWALL, DESIGN WEIGHT - 8.5 PSF

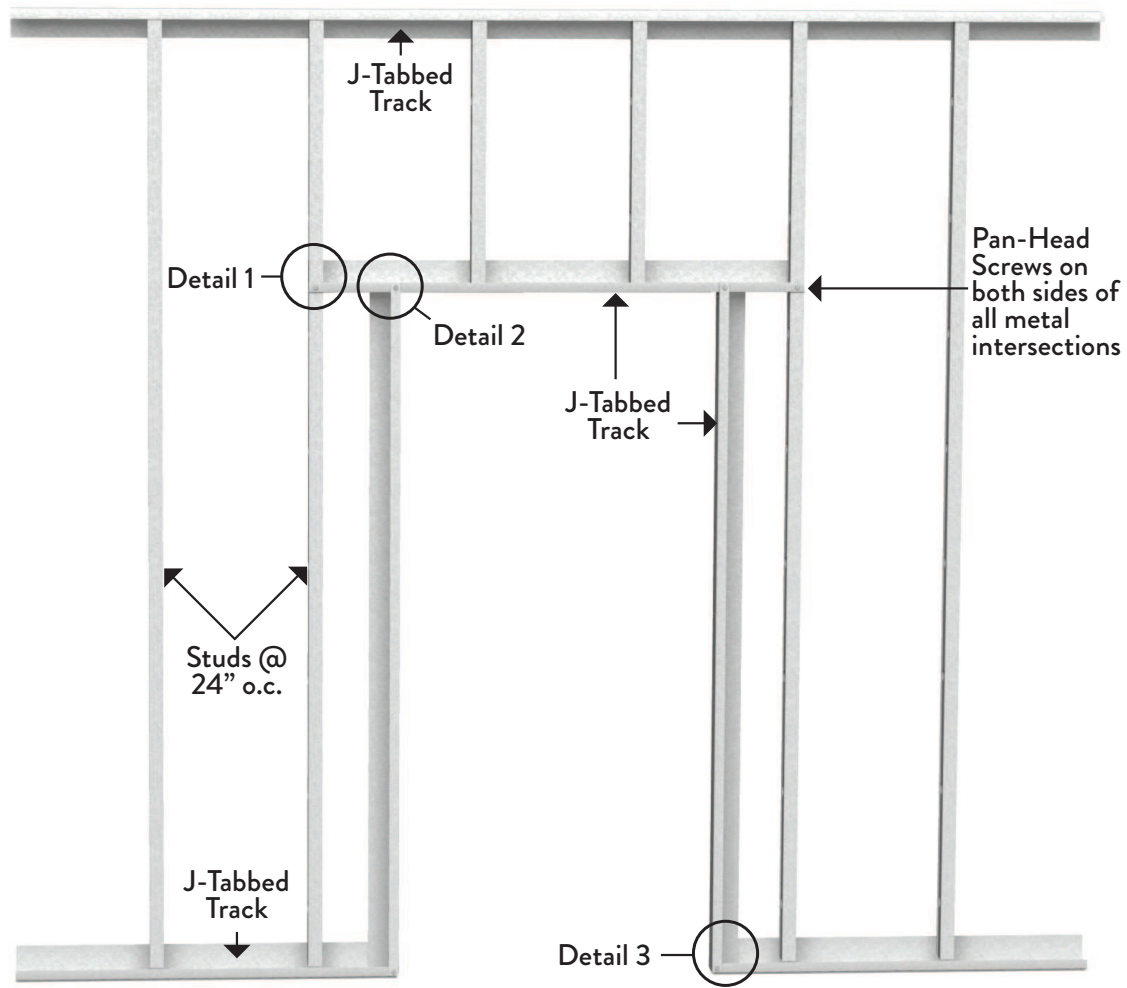
STC	DESCRIPTION
39	As shown below.
43	As shown below and with 1-1/2" thick, 3 PCF, mineral fiber insulation in cavity.
51	As shown below and with 1-1/2" thick, 3 PCF, mineral fiber insulation in cavity and with ClarkDietrich 1/2" resilient channels, 24" o.c. and at right angles to cavity side of studs under room side 1/2" or 5/8" Gypsum Board.



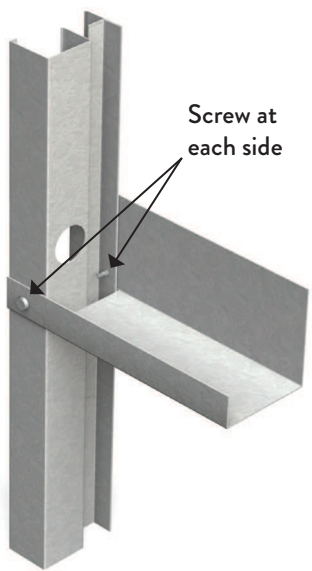
- Floor, Ceiling, Corner and Intersection Runners*:** 'J' shaped runner with unequal legs, 2-1/2" minimum deep, fabricated from minimum 0.019" thick galvanized steel. Position runners with short leg towards cavity side of wall. Runners attached to structural members with steel fasteners located not greater than 24" o.c. Runners are manufactured by ClarkDietrich Building Systems.
- Steel Studs*:** 'C-T' shaped slotted web studs, 1-1/2" wide by 2-1/2" minimum deep, fabricated from minimum 0.019" thick galvanized steel. Cut to length 1/2" less than the opening's height and spaced 24" maximum o.c. and between 1" thick gypsum shaftliner panels. Studs are manufactured by ClarkDietrich Building Systems.
- Gypsum Shaftliner:** 1" thick Georgia-Pacific Gypsum LLC Shaft Liner Type X*, Georgia-Pacific Gypsum LLC DensGlass Ultra Shaft Liner Type X*, Gold Bond Shaftliner, James Hardie Gypsum Hardierock Type X Shaftliner*, Continental Building Products Firecheck Shaftliner*, or USG Shaft Wall Liner, supplied in nominal 24" widths. The panels are inserted against the long leg of the 'J' runners and into the 1" deep recess of the studs. Free edges of end panels are retained by bending 'J' runner tabs (12" o.c.) at a 90° angle.
- Gypsum Board:** 1/2" thick Georgia-Pacific Gypsum LLC Fireguard C, Georgia-Pacific Gypsum LLC DensArmor Plus Fireguard C*, Gold Bond Fireshield Wall Board G, James Hardie Gypsum Superfire X Hardierock, Continental Building Products Firecheck Type C, USG Firecode C Sheetrock or 5/8" thick Type X Gypsum, applied vertically to both sides of the studs with joints offset and attached with 1" drywall screws 12" o.c. starting 6" from the top and bottom. All joints are finished with paper tape and joint compound.
Limitations: Gypsum Shaftliner and Gypsum Board must be by the same manufacturer. Height shall not exceed those in the table within these listings.

*Component bearing the Warnock Hersey Certification Mark, manufacturing information of these components is proprietary to the listed component's manufacturer.

DOOR OPENING ROOM SIDE



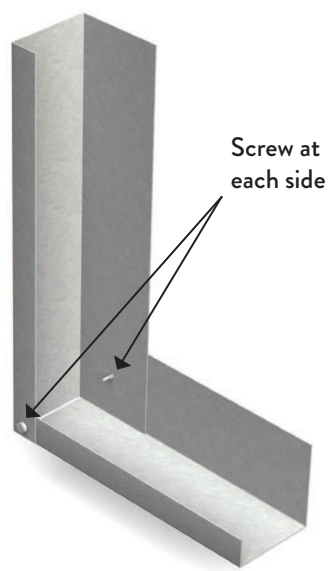
Detail 1



Detail 2

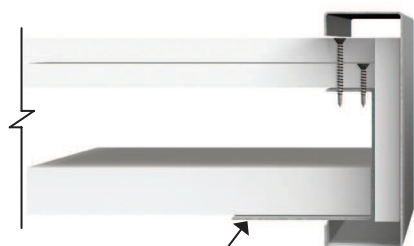


Detail 3



CONSTRUCTION DETAILS

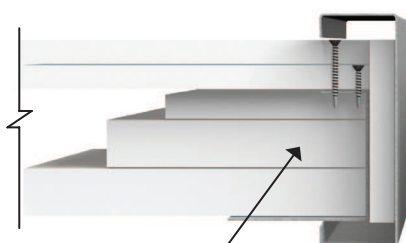
CROSS SECTION



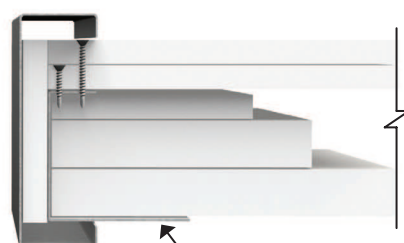
J-Tabbed Track
20 gauge or heavier



Jamb trim grouted in place
and/or attached to J-Tabbed
Track with jamb anchor clips



Solid gypsum filler
strips required for
frames over 7'0"

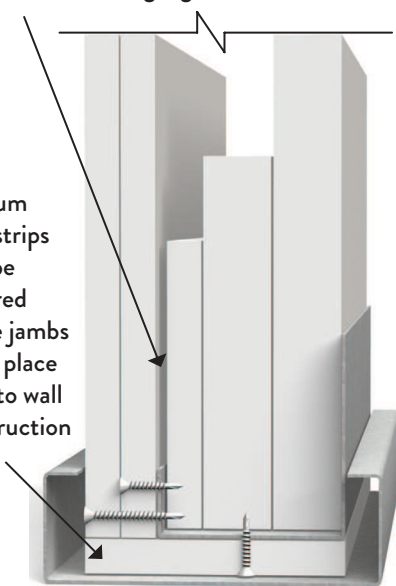


J-Tabbed Track

JAMB DETAIL

J-Tabbed Track 20 gauge or heavier

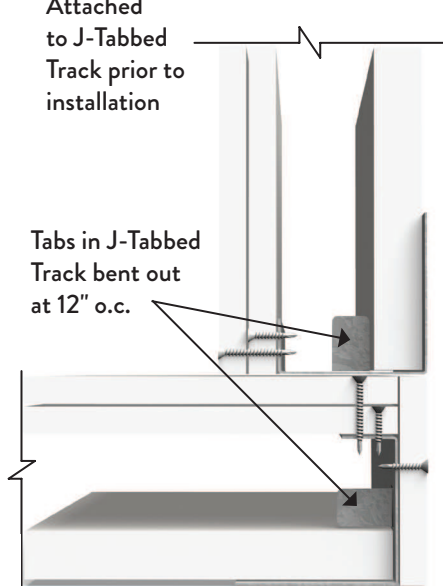
Gypsum
filler strips
may be
required
where jambs
are in place
prior to wall
construction



INSIDE CORNER

Attached
to J-Tabbed
Track prior to
installation

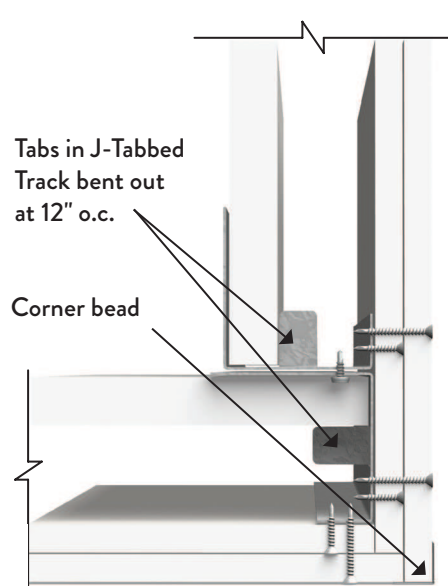
Tabs in J-Tabbed
Track bent out
at 12" o.c.



OUTSIDE CORNER

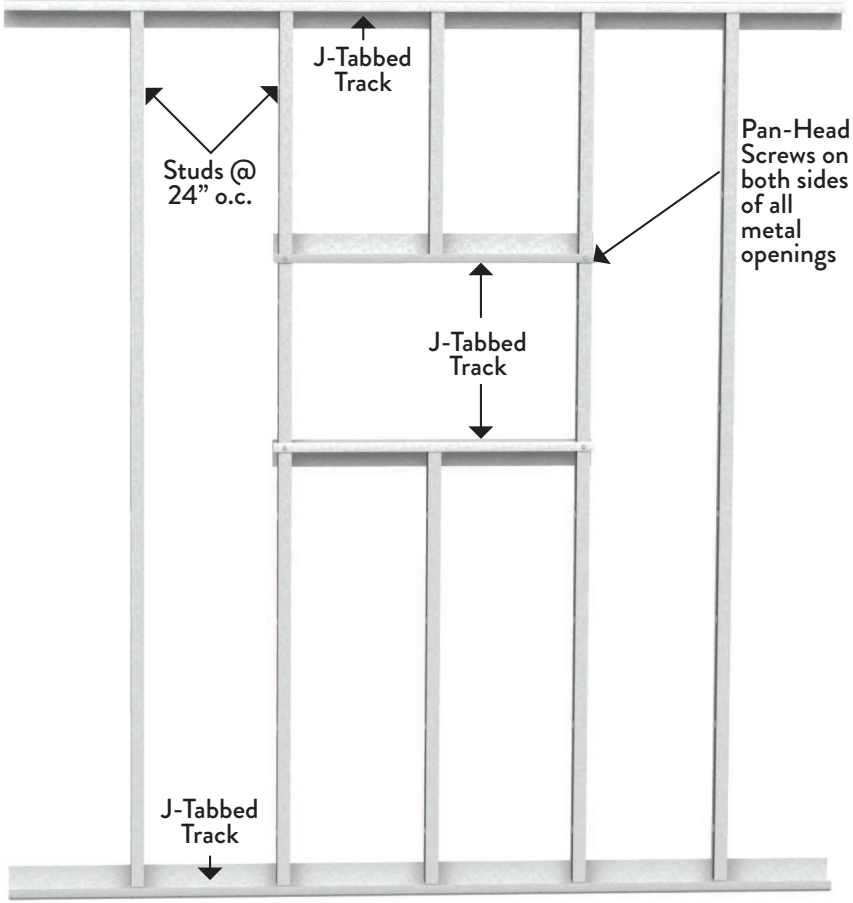
Tabs in J-Tabbed
Track bent out
at 12" o.c.

Corner bead

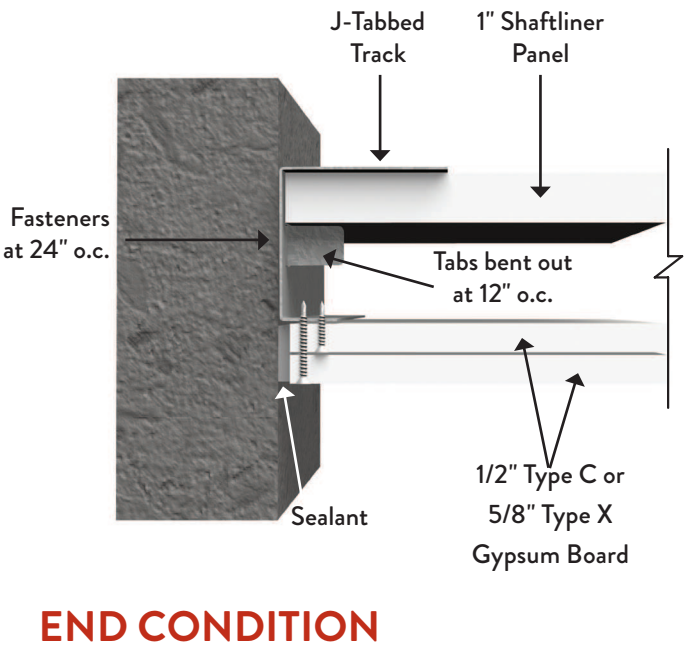
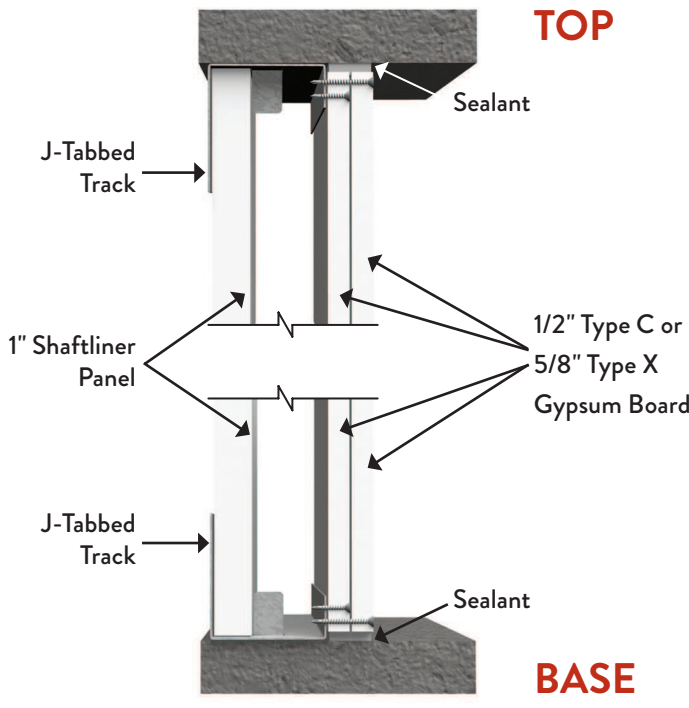
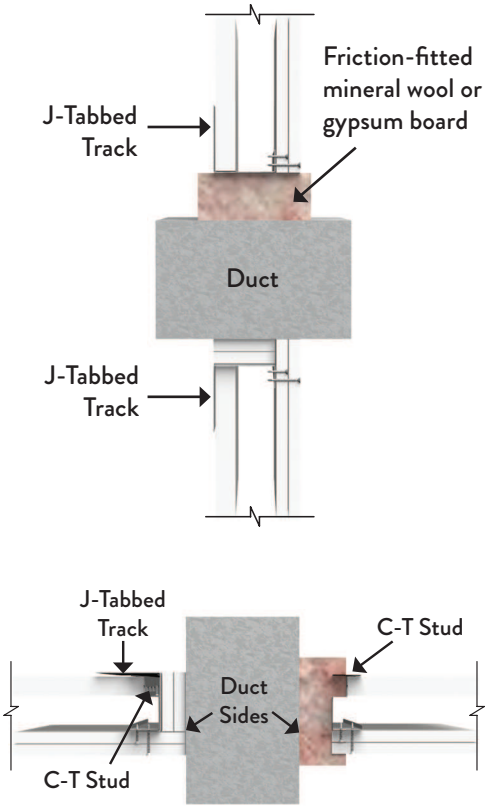


MECHANICAL PENETRATIONS

DUCT OPENING ROOM SIDE



ALTERNATE DUCT DETAILS



AREA SEPARATION WALL SYSTEMS

Fire-resistance protects lives and property.

Area separation walls are non-load bearing, 2-hour and 3-hour rated vertical wall assemblies that provide fire-resistant protection between adjacent living units in apartment buildings, condominiums and townhouses. They are also referred to as party walls, firewalls, multi-family walls and H-stud assemblies.

Assembled between two independent walls, area separation walls form a commonly shared party wall that extends from the foundation through the roofline. The walls are assembled with two 1" thick gypsum panel liners vertically installed

between 2" H-studs spaced 24" o.c. At the top and bottom of the walls, C-runners are installed back-to-back between vertically stacked panels. Overall stacked area separation wall assemblies cannot exceed 50 feet or the limits of the applicable UL Fire Assembly.

A photo of an area separation wall system after a fire is shown below. Although this was a tragic event, it clearly proves the effectiveness of the system. It performed as designed by maintaining the integrity of the firewall, protecting the lives and property of the adjacent units.



Photo courtesy National Gypsum.

H-STUD



ClarkDietrich H-studs are nominal 2" wide vertical members used to secure two 1" thick pieces of gypsum shaftliner in area separation wall assemblies. H-studs are inserted into C-runners and slid over gypsum panel liner edges, repeating until the desired wall length is achieved. Once the wall is plumbed, it is secured with aluminum burn clips.

Product code	Thickness			Size	
	Gauge	Mils	Design thickness (in)	Width (in)	Length (ft)
HSN	25	18	0.0188	2-1/8	8
					10
					12

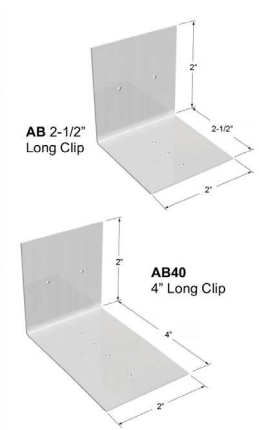
C-RUNNER



ClarkDietrich C-runner (or H-track) is used to secure H-stud and gypsum shaftliner panels in area separation wall assemblies. Attached to the foundation with power-actuated fasteners, C-runner is also used as top track to cap the H-stud and 1" gypsum shaftliner panels, with a second track screwed back-to-back to the lower runner, to hold the next level of assembly.

Product code	Thickness			Size	
	Gauge	Mils	Design thickness (in)	Width (in)	Length (ft)
HRN1	25	18	0.0188	2-1/8	8
					10

ALUMINUM BURN CLIP



ClarkDietrich aluminum burn clips are used as part of the H-stud area separation wall assembly and are designed to melt when exposed to fire. The clips hold the area separation wall assemblies in place at the floor, roof and truss line between adjacent units. In a fire, the aluminum burn clips on the fire-ridden side of the wall will melt, allowing the wall structure for that side to collapse.

Note: Check listed fire assembly for details of construction, thickness and length of required burn clips.

Product code	Thickness (in)	Size (in)	Packaging Pcs./Bucket
AB	0.050	2 x 2 x 2-1/2	500
AB63	0.063	2 x 2 x 2-1/2	
AB40*	0.063	2 x 2 x 4	250

*For use with 3-hour Design Assembly based on GA File No. ASW 2600 other custom breakaway clip lengths available.

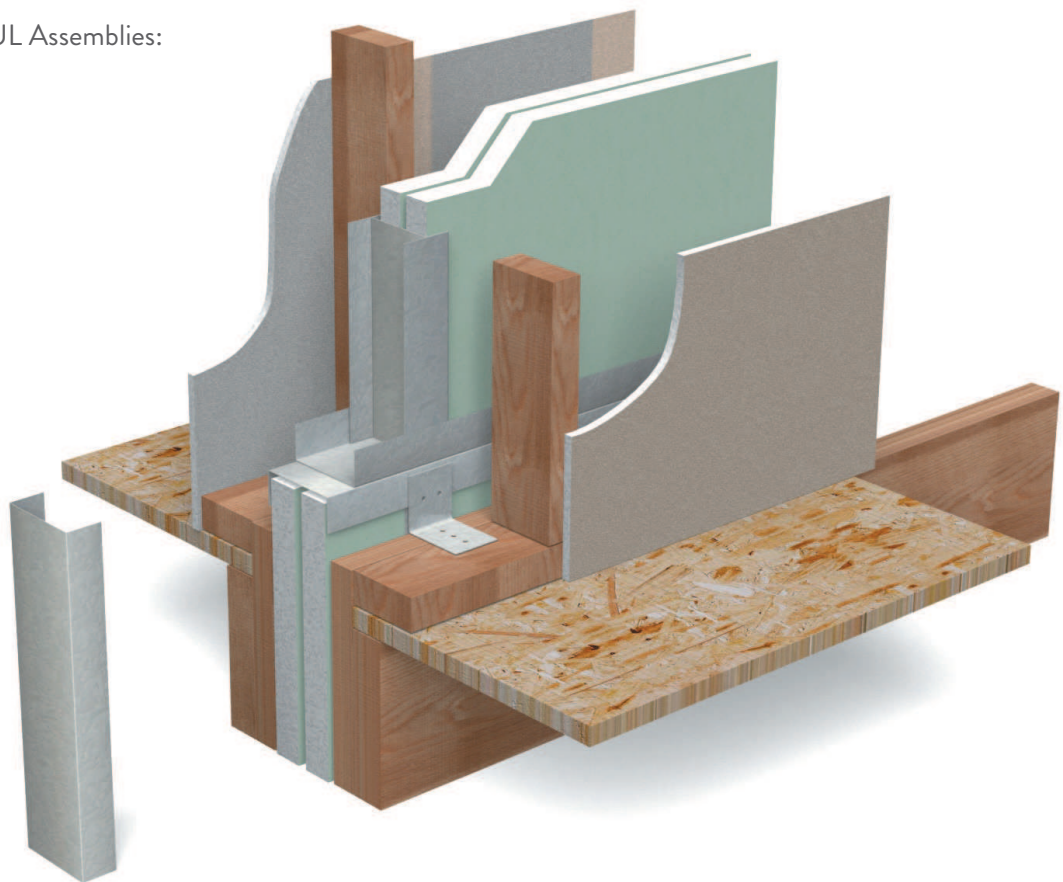
INSTALLATION PROCEDURES

1. Install C-runner along the floor in the desired position.
2. An additional track is installed vertically at the end of the wall.
3. Two 1" thick shaftliner panels are then inserted into the bottom and side tracks.
4. An H-stud is inserted into the lower track and slid over the edges of the shaftliner.
5. Repeat steps 3 and 4 until the desired wall length is achieved.
6. Cap the end and top of the wall with C-runner.
7. Confirm that the wall is plumb and then secure the assembly to the adjacent wall using aluminum burn clips on both sides of the wall. Make sure to leave a 3/4" gap between the area separation wall and adjacent wall. Clip spacing is dependent on the height of the wall. Wall assemblies can be stacked to a maximum height of 50' or per the details of the applicable UL assembly.

NOTE: Check listed Fire Assembly for details of construction, thickness and length of required burn clips.

Conforms to the following UL Assemblies:

- UL U336
- UL U347
- UL U366
- UL U375



ALUMINUM BURN CLIP

Clips melt away under intense heat.

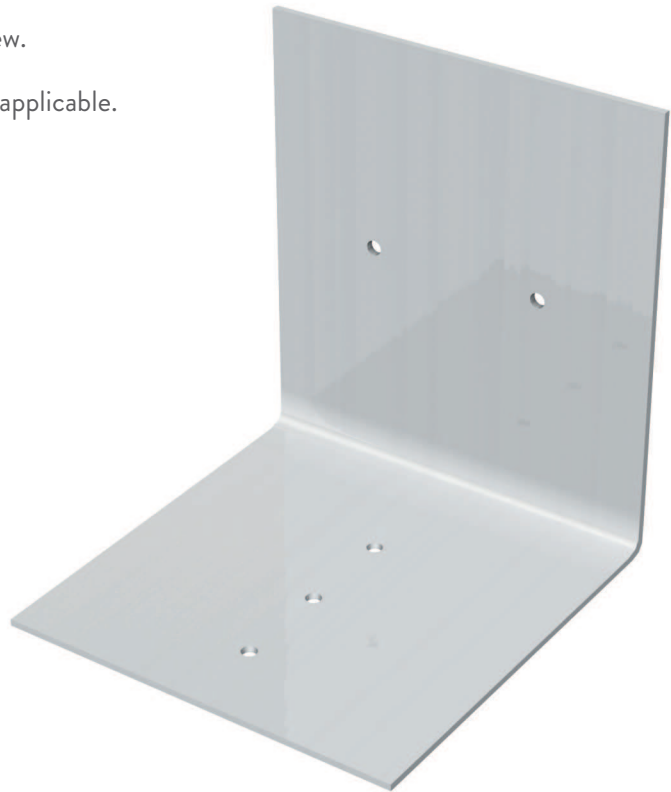
ClarkDietrich aluminum burn clips are used as part of the H-stud area-separation wall assembly and are designed to melt and break away when exposed to fire. The clips are used to hold the area-separation wall assembly in place at the floor, roof, and truss line between adjacent units. Should a fire break out in one unit, the Aluminum Burn Clips on the fire-ridden side of the area-separation wall will

melt, allowing the wall structure for that side to collapse. The burn clips on the non-fire side will remain intact and hold the area-separation wall in place as a barrier to contain the fire within the unit of origin.

Note: Check listed fire assembly for details of construction, thickness and length of required burn clips.

INSTALLATION PROCEDURES

1. Attach an aluminum burn clip to the completed area-separation wall assembly.
2. One clip should be located at each H-stud on both sides of the wall.
3. Attach the aluminum burn clip to the H-stud with a screw.
4. Attach to the adjacent framing with a screw or a nail, as applicable.



CODE APPROVALS AND PERFORMANCE STANDARDS

ClarkDietrich products meet or exceed these applicable performance standards.

AISI "North American Specification for the Design of Cold-Formed Steel Structural Members", 2012 edition

ASTM American Society for Testing and Materials

A653	"Standard Specification for Steel Sheet, Zinc-Coated (Galvanized) or Zinc-Iron Alloy-Coated (Galvannealed) by the Hot-Dip Process"
A1003	"Standard Specification for Steel Sheet, Carbon, Metallic- and Nonmetallic-Coated for Cold-Formed Framing Members"
C645	"Standard Specification for Nonstructural Steel Framing Members"
C754	"Standard Specification for Installation of Steel Framing Members to Receive Screw-Attached Gypsum Panel Products"
C1002	"Standard Specification for Steel Self Piercing Tapping Screw for the Application of Gypsum Panel Products or Metal Plaster Bases to Wood Studs or Steel Studs"
E119	"Standard Test Methods for Fire Tests of Building Construction and Materials"
E72	"Standard Test Methods of Conducting Strength Tests of Panels for Building Construction"
E90	"Standard Test Method for Laboratory Measurement of Airborne Sound Transmission Loss of Building Partitions and Elements"

UL® Underwriters Laboratories testing standard

UL 263 "Fire Tests of Building Construction and Materials"

Multiple UL® design listings

Additional code approvals

PEI AER-12061 (Shaftwall)

Independent product testing and certification

Sound ratings: (RAL)

LEED® Services

BUILD GREEN with ClarkDietrich Building Systems

ClarkDietrich Building Systems is an active member of the U.S. Green Building Council and is committed to supplying quality products that are environmentally responsible. We are continually working to develop greener building products and sustainable business practices. ClarkDietrich steel framing helps contribute points toward LEED® certification. For more details contact Technical Services at 888-437-3244 or visit www.clarkdietrich.com/LEED.

ClarkDietrich Building Systems has prepared this literature with the utmost diligence and care for accuracy and conformance to standards.

ClarkDietrich intends this information to be accurate, informative, and helpful as a selection guide for choosing ClarkDietrich Building System products. However, this information is only to be used for guidance and is not intended to replace the design, drawings, specifications, and decisions of a professional architect or engineer.

ClarkDietrich Building Systems or its affiliates shall not be responsible for incidental or consequential damages, directly or indirectly sustained, nor for loss caused by application of our products for other than their intended uses. Our liability is limited to replacement of defective products. Claims shall be deemed waived unless they are made to us in writing within thirty (30) days of the date a problem was or reasonably should have been discovered.

ClarkDietrich Building Systems reserves the right to modify or change any information contained in this literature without notification.

ClarkDietrich Building Systems is a proud member of the Steel Framing Industry Association (SFIA).



Scan for the most up-to-date ClarkDietrich literature.



Steel Framing Alliance®
Steel. The Better Builder.



USGBC and related logo is a trademark owned by the U.S. Green Building Council and is used by permission.

LOCATIONS

ClarkDietrich Building Systems Manufacturing and Sales Locations:

CALIFORNIA Riverside P 951.360.3500 F 951.360.3333	CALIFORNIA Sacramento P 951.360.3500 F 951.360.3333	CONNECTICUT Bristol P 866.921.0023 F 860.584.6899	FLORIDA Dade City P 352.518.4400 F 352.518.4450
GEORGIA McDonough P 678.304.5500 F 678.304.5555	HAWAII Kapolei P 951.360.3500 F 951.360.3333	ILLINOIS Rochelle P 800.659.0745 F 513.645.0750	MARYLAND Baltimore P 410.477.4000 F 410.477.1550
OHIO Vienna P 330.372.4014 F 330.372.1945	OHIO Warren-East P 330.372.5564 F 330.372.4055	TEXAS Baytown P 281.383.1617 F 281.573.1679	TEXAS Dallas P 214.350.1716 F 214.350.7252
CLIP EXPRESS™ P 866.638.1908 F 330.372.4055	VINYL CORP.™ P 800.648.4695 F 305.477.4108	STRAIT-FLEX P 888.747.0220	

ClarkDietrich Engineering Services. A full spectrum of solutions.

Toll-Free Phone: 877.832.3206
Toll-Free Fax: 877.832.3208
Technical Services: 888.437.3244
Email: engineering@clarkdietrich.com

CENTRAL Crown Point, IN
NORTHEAST Bristol, CT

SOUTHEAST McDonough, GA
WEST Carlsbad, CA

Turn to ClarkDietrich for a complete lineup of steel construction products and services nationwide:

Interior Framing · Exterior Framing · Interior Finishing · Clips/Connectors · Metal Lath/Accessories · Engineering



ClarkDietrich®
BUILDING SYSTEMS

9050 Centre Pointe Dr.
Suite 400
West Chester, OH 45069

P 513.870.1100
F 513.870.1300

clarkdietrich.com
Clarkwestern Dietrich Building Systems LLC