

Skewable Angle

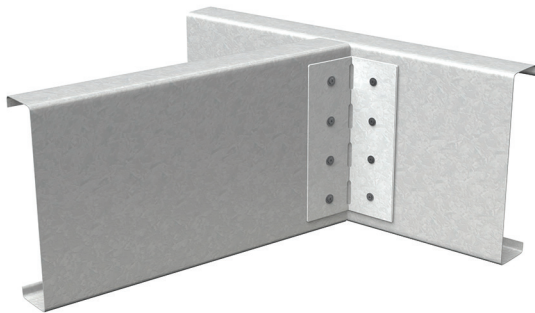
For rigid and off-angle attachments of joist-to-joist, joist-to-hip beam, or to other structural steel members.

ClarkDietrich skewable angles are used to make rigid attachments of joist-to-joist or joist-to-other miscellaneous framing. This clip is ideal for making off-angle attachments. It is easily field bent from 0° to 135°.

CAUTION: This clip can only be bent one time.

PRODUCT DIMENSIONS

- 2" x 2" x 3"
- 2" x 2" x 4-7/8"
- 2" x 2" x 5"
- 2" x 2" x 6-3/8"
- 2" x 2" x 7"
- 2" x 2" x 9"

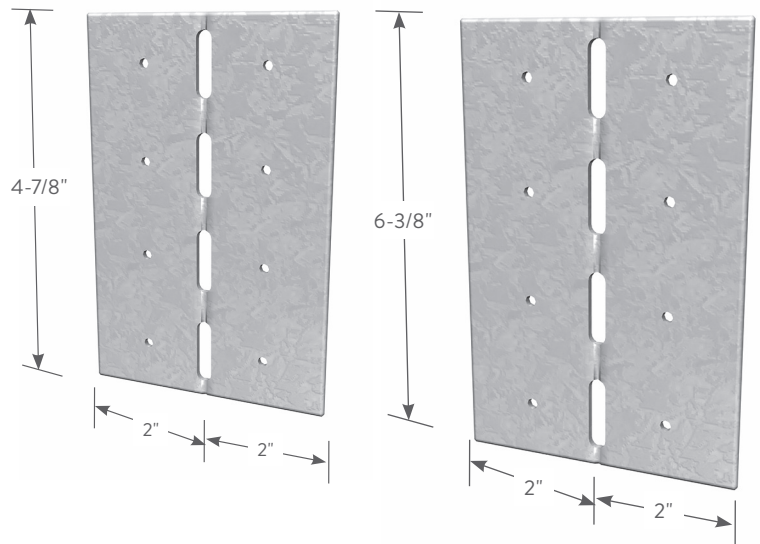


MATERIAL SPECIFICATIONS

- Gauge:** 18 gauge (43mil)
- Design Thickness:** 0.0451 inches
- Coating:** G90
- ASTM:** A653/A653M

INSTALLATION

Use all specified fasteners. ClarkDietrich field-skewable; bend one time only. Joist must be constrained against rotation when using a single SLS per connection.



Skewable Angles (SA)

Product code	Thickness		Size (in)	Packaging Pcs./Carton
	Mils (Gauge)	Design thickness (in)		
SA4	43mil (18ga)	0.0451	4-7/8	100
SA6	43mil (18ga)	0.0451	6-3/8	50
SA3	43mil (18ga)	0.0451	3	50
SA5	43mil (18ga)	0.0451	5	50
SA7	43mil (18ga)	0.0451	7	50
SA9	43mil (18ga)	0.0451	9	50

Skewable Angles (SA)

Product code	Length (in)	Fasteners	Allowable Loads	
			F1	F2
SA4	4-7/8	4 - #10	500	—
SA6	6-3/8	6 - #10	760	—
SA3	3	6 - #10	*	*
SA5	5	8 - #10	*	*
SA7	7	10 - #10	*	*
SA9	9	14 - #10	*	*

Notes:

- 1 No load duration increase allowed.
- 2 Loads are for one part only.
- * Refer to clarkdietrich.com for additional information on allowable loads.