

Drift FastClip™ Slide Clip - 68mil (14ga)

Curtain Wall/Bypass with Drift & Vertical Deflection

Vertical and lateral building movement up to 2".

ClarkDietrich Drift FastClip™ Slide Clip 68mils (14ga) is used to attach exterior curtain-wall studs to the building structure and provide for both vertical and lateral movement. FastClip Deflection Screws are provided with each clip for attachment to the wall studs and allow for 2" vertical deflection (1" up and down) to ensure friction-free sliding. Step bushings are provided for the connection to the structure and allow for 2" lateral deflection (1" left and right).

ALTERNATIVE PRODUCTS

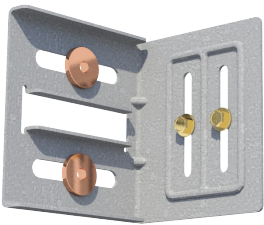
Drift Rail and Clip

PRODUCT DIMENSIONS

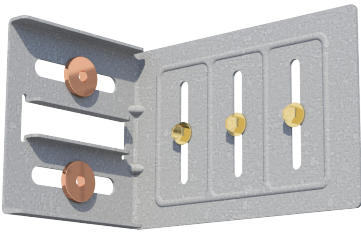
- D-FCSC3.5:    3-3/4" x 4" x 3-1/2" long
- D-FCSC6:     3-3/4" x 4" x 6" long
- D-FCSC8:     3-3/4" x 4" x 8" long

MATERIAL SPECIFICATIONS

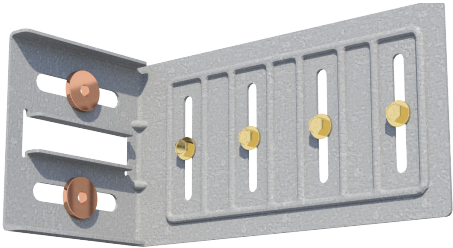
- Gauge: 14 gauge (68mil)
- Design Thickness: 0.0713 inches
- Yield Strength: 50ksi
- Coating: G90
- ASTM: A653/A1003



D-FCSC3.5  
(2) Bushings per Clip  
(2) Slots & Deflection Screws per Clip



D-FCSC6  
(2) Bushings per Clip  
(3) Slots & Deflection Screws per Clip

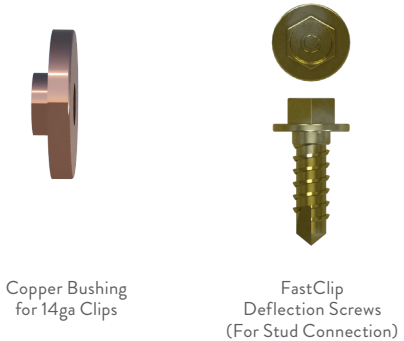


D-FCSC8  
(2) Bushings per Clip  
(4) Slots & Deflection Screws per Clip

Drift FastClip™ Slide Clip (D-FCSC)

Product code	Thickness		Size (in)	Packaging Pcs./Bucket
	Mils (Gauge)	Design thickness (in)		
D-FCSC3.5-68	68mil (14ga)	0.0713	3-3/4" x 4" x 3-1/2"	25
D-FCSC6-68	68mil (14ga)	0.0713	3-3/4" x 4" x 6"	25
D-FCSC8-68	68mil (14ga)	0.0713	3-3/4" x 4" x 7-3/4"	25

Packaging:  
D-FCSC3.5 includes (55) FastClip Deflection Screws & (50) Bushings  
D-FCSC6 includes (80) FastClip Deflection Screws & (50) Bushings  
D-FCSC8 includes (110) FastClip Deflection Screws & (50) Bushings

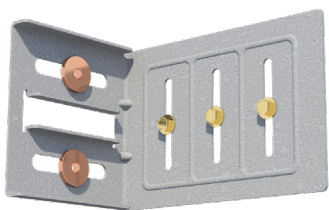


Copper Bushing for 14ga Clips      FastClip Deflection Screws (For Stud Connection)

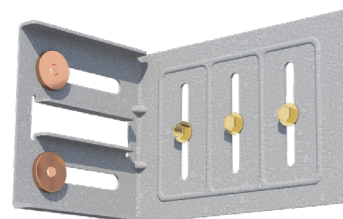
## INSTALLATION

To attach the clip to the cold-formed steel framing, two, three or four FastClip deflection screws (based upon clip size), shall be driven through the slotted holes and positioned to allow for the appropriate building deflection.

Attachment to the primary structure can be made with screws, or bolt anchors. Structure attachments shall be driven through the drift bushings and the Drift FastClip™ - centered in the drift slots.



**STRUCTURE CENTER CONNECTION<sup>1</sup>**  
Drift Bushings centered in slots



**STRUCTURE OFFSET CONNECTION<sup>2</sup>**  
Drift Bushings at far end of slots

### Drift FastClip™ Slide Clip (D-FCSC) Allowable Loads

ATTACHED TO MIN. 3/16" STRUCTURAL STEEL WITH (2) 1/4"-20 SCREWS

Clip Designation	Stud thickness mils (ga)	Fasteners		Tension or Compression Load Capacity			
		to Framing	to Structure	ASD		LRFD	
				Center (lbs) <sup>1</sup>	Offset (lbs) <sup>2</sup>	Center (lbs) <sup>1</sup>	Offset (lbs) <sup>2</sup>
D-FCSC3.5 68mils (14ga)	33mil (20ga) 33ksi	(2) #14 FastClip Deflection Screws	(2) 1/4" - 20 with Drift Bushing	395	383	632	613
	43mil (18ga) 33ksi			579	487	926	779
	54mil (16ga) 50ksi			612	526	979	841
	68mil (14ga) 50ksi			612	548	979	876
	97mil (12ga) 50ksi			648	548	1037	876
D-FCSC6 68mils (14ga)	33mil (20ga) 33ksi	(3) #14 FastClip Deflection Screws	(2) 1/4" - 20 with Drift Bushing	627	509	1003	815
	43mil (18ga) 33ksi			640	534	1024	855
	54mil (16ga) 50ksi			640	541	1024	866
	68mil (14ga) 50ksi			667	559	1067	895
	97mil (12ga) 50ksi			667	559	1067	895
D-FCSC8 68mils (14ga)	43mil (18ga) 33ksi	(4) #14 FastClip Deflection Screws	(2) 1/4" - 20 with Drift Bushing	597	499	955	798
	54mil (16ga) 50ksi			636	566	1018	906
	68mil (14ga) 50ksi			671	574	1074	918
	97mil (12ga) 50ksi			671	645	1074	1032

#### Notes:

- <sup>1</sup> #14 FastClip™ Deflection Screws centered in slots, Drift bushings centered in slots.
- <sup>2</sup> #14 FastClip™ Deflection Screws centered in slots, Drift bushings at end of slots.
- Load capacities have not been increased for wind, seismic, or other factors.
- Load Capacities include 1/8" service load limitation.
- Load Capacities calculated considering (2) 1/4"-20 screws for structure connection to 3/16" steel.
- Refer to ICC-ESR-3332 for allowable loads using 1/4"-20 screw fasteners with various plate connection thickness.
- #14 FastClip™ Deflection Screws for framing connection and step bushings for structure connection are provided with D-FCSC clip.

