

(D-FCSC3.5) Drift FastClip™ 3-1/2" Slide Clip 12GA (97mil) Vertical & Lateral Slide Deflection Clip

ClarkDietrich Drift FastClip™ Slide Clip 97mils (12ga) are used to attach exterior curtain-wall studs to the building structure and provide for both vertical and lateral movement. FastClip Deflection Screws are provided with each clip for attachment to the wall studs and allow for 2" vertical deflection (1" up and down) to ensure friction-free sliding. Step bushing are provided for the connection to the structure and allow for 2" lateral deflection (1" left and right).

For allowable loads for multiple connection options, reference www.clarkdietrich.com/DriftClip for more information.

Product Data & Ordering Information:

Material	Structural Grade 50 Type H (ST50H), 50ksi (340 MPa)
Clip Length	3-1/2"
Thickness	12ga (97mil), 0.1017" Design thickness, 0.0966" Min. thickness
Coating	G90 (Z275) hot-dipped galvanized coating
Packaging	25 clips per bucket. Includes 55 FastClip Deflection screws & 50 Bushings. (2) Bushings per clip. (2) Slots & Deflection screws per clip.

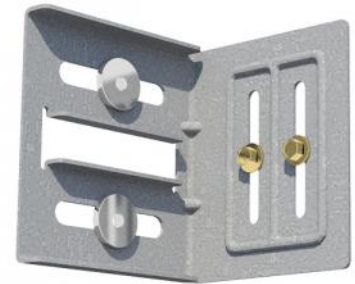
ASTM & Code Standards:

- Sheet steel meets or exceeds requirements of ASTM A1003
- Galvanized coating meets or exceeds requirements of ASTM A653
- SDS & Product Certification Information available at www.clarkdietrich.com/SupportDocs

05.40.00 (Cold-Formed Metal Framing)



- Vertical movement up to 2" (1" up and down)
- Lateral movement up to 2" (1" left and right)
- FastClip™ Deflection Screws (included) provide frictionless slip connection
- U.S. Patent No. D814905



FastClip Deflection Screw
Silver Bushing is for 12ga Clip

Sustainability Credits:

For more details and LEED letters contact Technical Services at 888-437-3244 or visit www.clarkdietrich.com/LEED

LEED v4 MR Credit -- Building Product Disclosure and Optimization: EPD (1 point) - Sourcing of Raw Materials (1 point) - Material Ingredients (1 point) - Construction and Demolition Waste Management (up to 2 points) - Innovation Credit (up to 2 points).

LEED 2009 Credit MR 2 & MR 4 -- ClarkDietrich's steel products are 100% recyclable and have a national average recycled content of 34.2% (19.8% post-consumer and 14.4% pre-consumer). If seeking a higher number to meet Credit MR 5, please contact us at (info@clarkdietrich.com / 888-437-3244)

Project Information

Name:
Address:

Contractor Information

Name:
Contact:
Phone:
Fax:

Architect Information

Name:
Contact:
Phone:
Fax: