

FastBridge™ Clip (FB33)

33mil (20 Gauge) U-Channel Lateral Bracing Clip

The ClarkDietrich FastBridge™ clip is used to secure U-Channel or Cold Rolled Channel (CRC) to structural or non-structural wall studs when used in loadbearing, curtain wall or drywall framing applications. The wall stud friction fit design allows for as little as one screw for the connection to the U-Channel.

The FastBridge™ clip is a stiffened, G90 galvanized steel clip that's tested and designed to facilitate the rapid, efficient installation of 1-1/2" U-Channel lateral bracing for exterior curtain wall framing, loadbearing walls or high interior partitions constructed of structural or non-structural studs.

FastBridge™ clips are fastened using #10 self-drilling screws driven through the clip hole into the U-Channel. More than one screw may be need depending on design. Design loads & tables can be found at: www.clarkdietrich.com/FastBridge.

The FastBridge™ clip should not be used in studs over 8" wide.

Product Data & Ordering Information:

Material: Yield Strength: 33ksi
Coating: G90
Thickness: 20ga (33mil), 0.0346" Design Thickness, 0.0329" Min. Thickness
Dimensions: Made to fit over 1-1/2" U-channel and inside a 1-1/2" punchout
Packaging: 200 pieces per bucket
Product weight: 0.10 lb/piece

ASTM & Code Standards:

- Galvanized sheet steel meets or exceeds requirements of ASTM A653
- SDS & Product Certification Information is available at www.clarkdietrich.com/SupportDocs

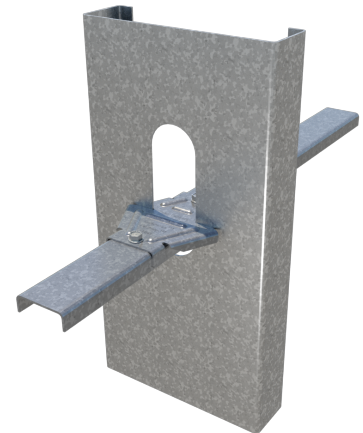
Alternative Products:

- SwiftClip™ (LS-Series)
- Spazzer® 5400 Bridging Bar
- Spazzer® 9200 Bridging Bar

05.40.00 (Cold-Formed Metal Framing)



- 33mil (20ga) light-duty clip for use with 20ga to 16ga structural studs or ProSTUD Drywall Framing



Sustainability Credits:

For more details and LEED letters contact Technical Services at 888-437-3244 or visit www.clarkdietrich.com/LEED

LEED v4 MR Credit -- Building Product Disclosure and Optimization: EPD (1 point) - Sourcing of Raw Materials (1 point) - Material Ingredients (1 point) - Construction and Demolition Waste Management (up to 2 points) - Innovation Credit (up to 2 points).

LEED 2009 Credit MR 2 & MR 4 -- ClarkDietrich's steel products are 100% recyclable and have a national average recycled content of 34.2% (19.8% post-consumer and 14.4% pre-consumer). If seeking a higher number to meet Credit MR 5, please contact us at (info@clarkdietrich.com / 888-437-3244)

Project Information

Name:
Address:

Contractor Information

Name:
Contact:
Phone:
Fax:

Architect Information

Name:
Contact:
Phone:
Fax: