

FastBridge™ Clip (FB68)

68mil (14 Gauge) U-Channel Lateral Bracing Clip

The ClarkDietrich FastBridge™ clip is used to secure U-Channel or Cold Rolled Channel (CRC) to structural wall studs when used in load-bearing or curtain wall applications. The wall stud friction fit design allows for as little as one screw for the connection to the U-Channel.

The FastBridge™ clip is a stiffened, G90 galvanized steel clip that's tested and designed to facilitate the rapid, efficient installation of 1-1/2" U-Channel lateral bracing for exterior curtain wall framing, load-bearing walls or high interior partitions constructed of structural studs.

FastBridge™ clips are fastened using #10 self-drilling screws driven through the clip hole into the U-Channel. More than one screw may be need depending on design. Design loads & tables can be found at: www.clarkdietrich.com/FastBridge

The FastBridge™ clip should not be used in studs over 8" wide.

Product Data & Ordering Information:

Material: 50ksi yield strength
Coating: G90
Thickness: 14ga (68mil), 0.0713" Design Thickness, 0.0677" Min. Thickness
Dimensions: Made to fit over 1-1/2" U-Channel and inside a 1-1/2" punchout
Packaging: 200 pieces per bucket
Product weight: 0.21 lb/piece

ASTM & Code Standards:

- Galvanized sheet steel meets or exceeds requirements of ASTM A653
- SDS & Product Certification Information is available at www.clarkdietrich.com/SupportDocs

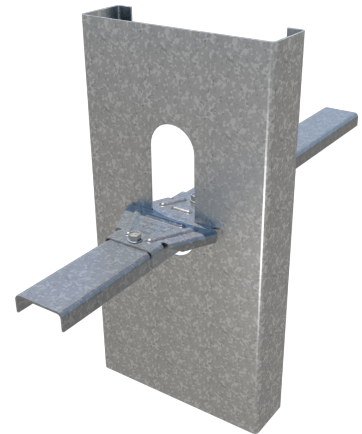
Alternative Products:

- SwiftClip™ (LS-Series), Spazzer® 5400 Bridging Bar

05.40.00 (Cold-Formed Metal Framing)



- 68mil (14ga) heavy-duty clip for use with 16ga to 12ga structural studs



Sustainability Credits:

For more details and LEED letters contact Technical Services at 888-437-3244 or visit www.clarkdietrich.com/LEED

LEED v4 MR Credit -- Building Product Disclosure and Optimization: EPD (1 point) - Sourcing of Raw Materials (1 point) - Material Ingredients (1 point) - Construction and Demolition Waste Management (up to 2 points) - Innovation Credit (up to 2 points).

LEED 2009 Credit MR 2 & MR 4 -- ClarkDietrich's steel products are 100% recyclable and have a national average recycled content of 34.2% (19.8% post-consumer and 14.4% pre-consumer). If seeking a higher number to meet Credit MR 5, please contact us at (info@clarkdietrich.com / 888-437-3244)

Project Information

Name:
Address:

Contractor Information

Name:
Contact:
Phone:
Fax:

Architect Information

Name:
Contact:
Phone:
Fax: