

Extended FastClip™ Slide Clip

Curtain Wall/Bypass

Vertical building movement up to 3", and commonly used for large standoff conditions.

ClarkDietrich FCEC deflection clips are used to attach exterior curtain wall studs to the building structure and provide for vertical building movement independent of the cold-formed steel framing. The clips are available in standard lengths of 6", 8", 10" and 12" and are ideal for medium to larger standoff conditions. Extended FastClip™ deflection clips install quickly with screws, welds or powder-actuated fasteners, and provide adjustable standoff to ensure a plumb wall plane. FastClip deflection screws are provided with each clip to ensure friction-free sliding.

ALTERNATIVE PRODUCTS

Fast Strut™
 Universal Bypass Clip

PRODUCT DIMENSIONS

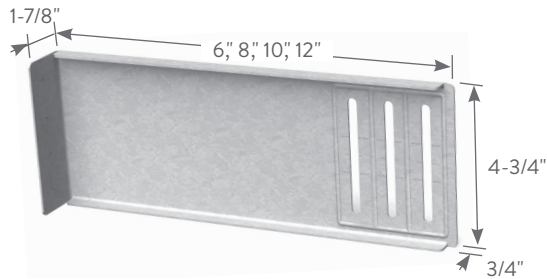
- 6" Extended FastClip: 1-7/8" x 6" x 4-3/4"
- 8" Extended FastClip: 1-7/8" x 8" x 4-3/4"
- 10" Extended FastClip: 1-7/8" x 10" x 4-3/4"
- 12" Extended FastClip: 1-7/8" x 12" x 4-3/4"

MATERIAL SPECIFICATIONS

- Gauge:** 14 gauge (68mil)
- Design Thickness:** 0.0713 inches
- Coating:** G90
- Yield Strength:** 50ksi
- ASTM:** A653/A653M

INSTALLATION

Connections to the building can be made with screws, welds, powder-actuated fasteners or drill-in concrete anchors. Mechanical fasteners shall be located on the embossed marks given on the scored line of the 1-7/8" flange. Three FastClip deflection screws are used to attach the clip to the cold-formed steel framing. Screws shall be driven through the slotted holes and positioned to allow for the appropriate building deflection.



Extended FastClip™ Slide Clip (FCEC)

Product code	Thickness		Size (in)	Packaging Pcs./Bucket
	Mils (Gauge)	Design thickness (in)		
FCEC6-68	68mil (14ga)	0.0713	1-7/8 x 6 x 4-3/4	25
FCEC8-68	68mil (14ga)	0.0713	1-7/8 x 8 x 4-3/4	25
FCEC10-68	68mil (14ga)	0.0713	1-7/8 x 10 x 4-3/4	25
FCEC12-68	68mil (14ga)	0.0713	1-7/8 x 12 x 4-3/4	25
FCEC8-97	97mil (12ga)	0.1017	1-7/8 x 8 x 4-3/4	25

Includes 80 FastClip deflection screws per bucket.



FastClip Deflection Screw

Intertek CCRR-0208
 U.S. Patent No. 6,688,069

Extended FastClip™ Slide Clip

Curtain Wall/Bypass

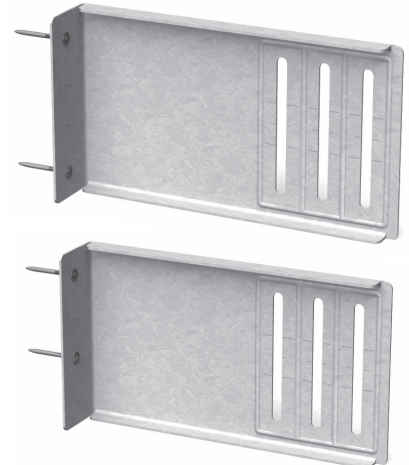
Extended FastClip™ (FCEC) Allowable Loads (lbs)

Anchor type	Stud thickness and yield strength	No. anchors to structure	Allowable load (lbs)
Buildex #12-24 Tek 5 Self-Drilling Screws to 3/16" Steel	33mil (20ga) 33ksi	2	689
		3	689
		4	689
	43mil (18ga) 33ksi	2	852
		3	852
		4	852
	54mil (16ga) 50ksi	2	852
		3	852
		4	852
	68mil (14ga) 50ksi	2	852
		3	852
		4	852
97mil (12ga) 50ksi	2	852	
	3	852	
	4	852	
PAF to 3/16" Steel*	33mil (20ga) 33ksi	2	689
		3	689
		4	689
	43mil (18ga) 33ksi	2	510
		3	765
		4	852
	54mil (16ga) 50ksi	2	852
		3	852
		4	852
	68mil (14ga) 50ksi	2	852
		3	852
		4	852
97mil (12ga) 50ksi	2	852	
	3	852	
	4	852	

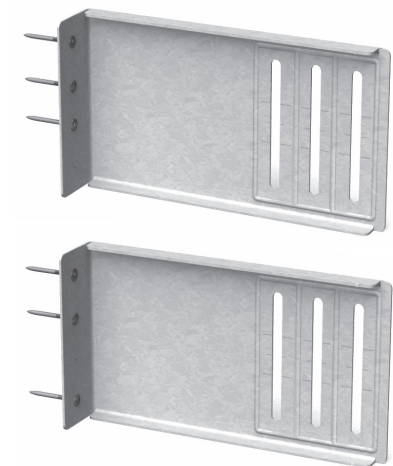
*See General Note #6 on page 9 for the definition of PAF, minimum requirements and other additional information.

Notes:

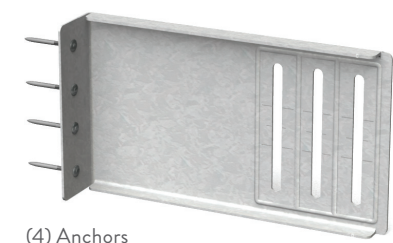
- 1 The 1/3 stress increase for wind shall not be used.
- 2 Attach building anchors to the structure according to the manufacturer's instructions. Anchors shall be installed through the embossments on the scored line of the clip as shown to the right. In no case shall anchors be installed more than 3/4" from the bend on the short leg of the clip. In cases of discrepancy between this information and the design engineer's details, the design engineer's details shall be followed.
- 3 It is the responsibility of the design professional to detail the project drawings for proper clip installation.
- 4 For connections to concrete, or other technical assistance, contact ClarkDietrich at 888-437-3244.
- 5 Buildex is a registered trademark of Illinois Tool Works, Inc.



Location Options with (2) Anchors



Location Options with (3) Anchors



(4) Anchors

