

Pony Wall Heavy 48" (PW48)

Partial wall framing connection to floor

ClarkDietrich Pony Wall Heavy is intended to support out-of-plane loading of cantilevered partial wall systems that are unsupported at the top track. Out-of-plane loads are transferred to the floor system through the base-plate, which is welded to the Pony Wall Heavy stud member.

For allowable loads and multiple connection options, reference www.clarkdietrich.com/ponywall for more information.

Product Data & Ordering Information:

Plate Material:	ASTM A36 1/2" thick hot rolled steel
Stud Material:	Structural Grade 50 Type H (ST50H), 50ksi (340 MPa) 12ga (97mil), 0.1017" Design thickness, 0.0966" Min. thickness
Plate Dimensions:	3-3/8" x 8" x 1/2" thick (92.1mm x 203.2mm x 12.7mm)
Stud Dimensions:	3-5/8" x 2-1/2" x 47-1/4" tall (92.1mm x 63.5mm x 1200.2mm)
Packaging:	Individually
Product weight:	16.2 lb/piece

ASTM & Code Standards:

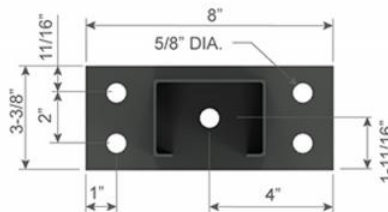
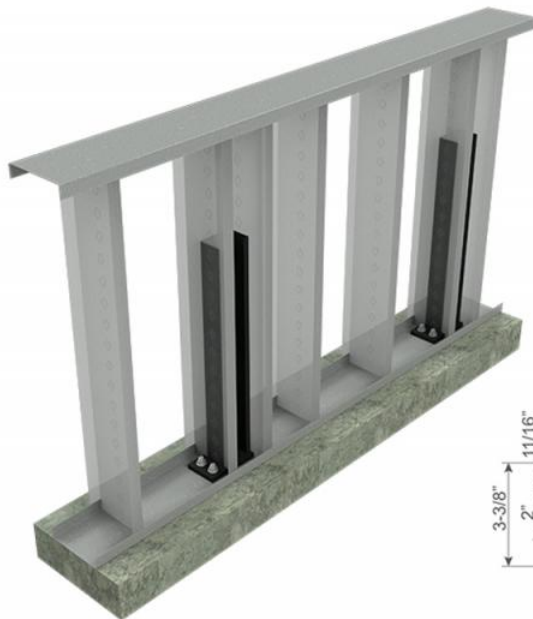
- Sheet steel meets or exceeds requirements of ASTM A1003
- SDS & Product Certification Information available at www.clarkdietrich.com/SupportDocs

05.40.00 (Cold-Formed Metal Framing)



Foundation Connections

- Anchors wall to floor with 1/2" anchors



Sustainability Credits:

For more details and LEED letters contact Technical Services at 888-437-3244 or visit www.clarkdietrich.com/LEED

LEED v4 MR Credit -- Building Product Disclosure and Optimization: EPD (1 point) - Sourcing of Raw Materials (1 point) - Material Ingredients (1 point) - Construction and Demolition Waste Management (up to 2 points) - Innovation Credit (up to 2 points).

LEED 2009 Credit MR 2 & MR 4 -- ClarkDietrich's steel products are 100% recyclable and have a national average recycled content of 34.2% (19.8% post-consumer and 14.4% pre-consumer). If seeking a higher number to meet Credit MR 5, please contact us at (info@clarkdietrich.com / 888-437-3244)

Project Information

Name:
Address:

Contractor Information

Name:
Contact:
Phone:
Fax:

Architect Information

Name:
Contact:
Phone:
Fax: