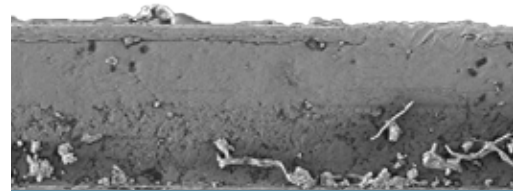


An enhancement for producing easier-to-handle steel that reduces the risk of cuts and scrapes.

## 01 | WHAT IS SMART EDGE?

Smart Edge is a proprietary safety feature now standard with ClarkDietrich's industry-leading ProSTUD® Drywall Framing System. We have reworked the edge of the return lips of the studs, and the edge of the leg of the runner tracks, making them smoother and more rounded. The result is an easier-to-handle product that reduces the risk of cuts and scrapes for installers, as well as for other trades who may come in contact with the framing.



Before: Slit-Edge Top

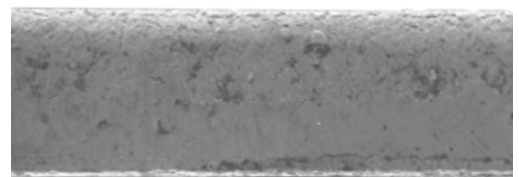
## 02 | WHY WAS SMART EDGE DEVELOPED?

### SAFETY

ClarkDietrich is committed to workers' health and well-being, so we develop products that minimize the risks and potential costs of injuries. When it comes to features like Smart Edge, the need is clear.

### INNOVATION

ClarkDietrich consistently brings increased value to our product lines through more sophisticated manufacturing. Smart Edge coincides with an increase to the yield strength of our 20 EQ steel framing. Our new 19 mil thickness (18 mil minimum thickness) product continues to provide the industry's most extensive suite of fire, sound and limiting heights.

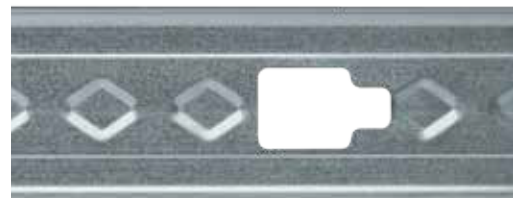


After: Smart Edge Top

## 03 | WHERE SMART EDGE WILL BE AVAILABLE:

Smart Edge is now available nationwide. For questions or more details, please contact your ClarkDietrich representative or call our technical services team at (888) 437-3244.

Smart Edge does not eliminate all risks of cuts and scrapes. ClarkDietrich always recommends the use of appropriate Personal Protective Equipment (PPE), including but not limited to gloves and arm guards, for all trade personnel who come in contact with cold-formed steel framing.



ProSTUD Drywall Framing