

## TradeReady® Floor Joist Blocking (725JB)

### For 7-1/4" Deep Joists

**Quick and efficient system that prevents joist rotation and accommodates mechanical passing**

TradeReady Floor Joist Blocking is one of the primary components that make up the TradeReady floor bracing system. TradeReady Blocking features a large extruded hole to accommodate HVAC, mechanical, plumbing and sprinkler runs.

TradeReady Blocking is pre-cut and formed to fit securely between the floor joists to prevent joist rotation. Pre-punched holes in the connection legs are added for quick attachment to each floor joist. Structural blocking is an economical alternative to Tension Bracing or blocking /strapping.

#### Product Data & Ordering Information:

Material: 50ksi yield strength  
 Coating: G90  
 Thickness: 54mils (16a) - 0.0566" design thickness, 0.0538" minimum thickness  
 Dimensions: Length: Based on spacing: 12", 16" or 24" long.  
 Depth: 7-1/4" on one end same as joist depth  
 Notched end = 5-1/4" to fit inside joist flanges  
 Connection legs = 3" wide  
 Hole Size = 4-1/2" x 7"

Packaging: 10 pieces per carton  
 Weight: Based on length: 12" = 1.94 lbs, 16" = 2.60 lbs, 24" = 4.07 lbs / Each

#### ASTM & Code Standards:

- Sheet steel meets or exceeds mechanical and chemical requirements of ASTM A1003
- TradeReady Floor Joist Blocking complies with International Residential Code (Section R505.3), for solid blocking in steel floor joist systems.
- SDS & Product Certification Information is available at [www.clarkdietrich.com/SupportDocs](http://www.clarkdietrich.com/SupportDocs)

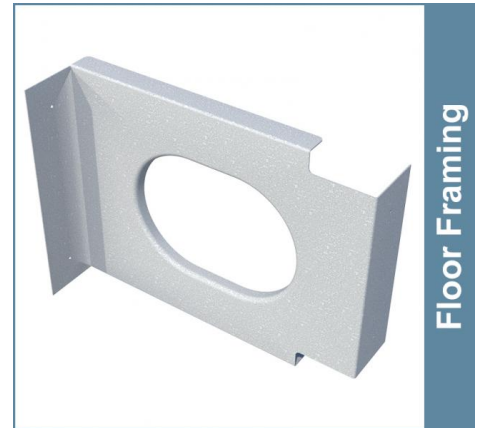
#### Installation:

Place the notched end of the TradeReady Blocking inside the open side of one floor joist. Attached each end of the TradeReady Blocking to each floor joist with (2) #10-16 screws in pre-punched holes.

#### Alternative Products:

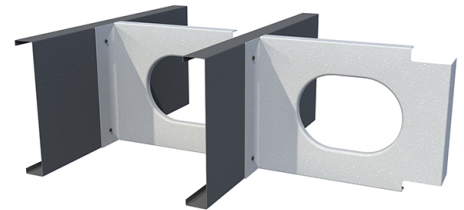
- Tension Bracing (CDTB)
- Diagonal Tension Strapping

#### 05.40.00 (Cold-Formed Metal Framing)



Floor Framing

- Pre-cut to fit 12", 16", or 24" joist spacing
- Pre-punched holes for quick attachment to floor joists



#### Sustainability Credits:

For more details and LEED letters contact Technical Services at 888-437-3244 or visit [www.clarkdietrich.com/LEED](http://www.clarkdietrich.com/LEED)

**LEED v4 MR Credit** -- Building Product Disclosure and Optimization: EPD (1 point) - Sourcing of Raw Materials (1 point) - Material Ingredients (1 point) - Construction and Demolition Waste Management (up to 2 points) - Innovation Credit (up to 2 points).

**LEED 2009 Credit MR 2 & MR 4** -- ClarkDietrich's steel products are 100% recyclable and have a national average recycled content of 34.2% (19.8% post-consumer and 14.4% pre-consumer). If seeking a higher number to meet Credit MR 5, please contact us at ([info@clarkdietrich.com](mailto:info@clarkdietrich.com) / 888-437-3244)

#### Project Information

Name:  
Address:

#### Contractor Information

Name:  
Contact:  
Phone:  
Fax:

#### Architect Information

Name:  
Contact:  
Phone:  
Fax: