

TradeReady® Floor Joist

Product category 11-1/4" x 1-3/4" Flange 16ga TradeReady Joist
 Product name 1125TDJ175-54 (50ksi) - Punched Finish: CP60

Geometric Properties

| | | |
|--------------------------|---------------------------|---------------------------------|
| Web depth: 11.250 in | Knock Out Shape: Ellipse | Design thickness: 0.0566 in |
| Flange width: 1.750 in | Knock Out Height: 6-1/4" | Min. steel thickness: 0.0538 in |
| Stiffening lip: 0.625 in | Knock Out Width: 9" | Yield stress, Fy: 50ksi |
| | Small Hole Dia.: 1-11/32" | Ultimate, Fu: 65 ksi |

Gross Section Properties of Full Section

| | |
|----------------------------------|-------------------------|
| Cross sectional area (A) | 0.882 in ⁽²⁾ |
| Member weight per foot of length | 2.886 lbs/ft |
| Moment of inertia (Ix) | 14.18 in ⁽⁴⁾ |
| Radius of gyration (Rx) | 4.009 in |
| Gross moment of inertia (Iy) | 0.280 in ⁽⁴⁾ |
| Gross radius of gyration (Ry) | 0.563 in |

Net Section Properties (at knockout)

| | |
|-------------------------------|-------------------------|
| Cross sectional area (A) | 0.574 in ⁽²⁾ |
| Moment of inertia (Ix) | 13.50 in ⁽⁴⁾ |
| Radius of gyration (Rx) | 4.849 in |
| Gross moment of inertia (Iy) | 0.221 in ⁽⁴⁾ |
| Gross radius of gyration (Ry) | 0.621 in |

Allowable Capacities

| | |
|---|---------------|
| Fully Braced Allowable Moment at Knockout (Ma-kno) | 54,849 in-lbs |
| Fully Braced Allowable Moment at Full Section (Ma-full) | 59,655 in-lbs |
| Allowable Shear at Knockout (Va-kno) | 1,322 lbs |
| Allowable Shear at Full Section (Va-full) | 1,471 lbs |

Torsional Section Properties

| | |
|--|--------------------------|
| Distance between centroid and shear-center (Xo) | -0.899 in |
| Distance between centroid and web-centerline (X) | 0.303 in |
| St. Venant torsional constant (J*1000) | 0.943 (in ⁴) |
| Torsional warping constant (Cw) | 7.322 (in ⁶) |
| Radii of gyration (Ro) | 4.147 in |
| Torsional flexural constant (Beta) | 0.953 |

Effective Section Properties

| | |
|------------------------|--------------------------|
| Moment of inertia (Ix) | 13.10 (in ⁴) |
| Section modulus (Sx) | 1.992 (in ³) |

ASTM & Code Standards:

- AISI North American Specification [NASPEC] 2004
- Structural framing is produced to meet or exceed ASTM C955
- Sheet steel meets or exceeds mechanical and chemical requirements of ASTM A1003
- SDS & Product Certification Information is available at www.clarkdietrich.com/SupportDocs
- U.S. Patent Nos. 6,301,854; 6,691,478; 6,418,694; 6,691,487; 6,761,005; 7,240,459
- Canadian Patent No. 2319346, Mexican Patent No. 243294

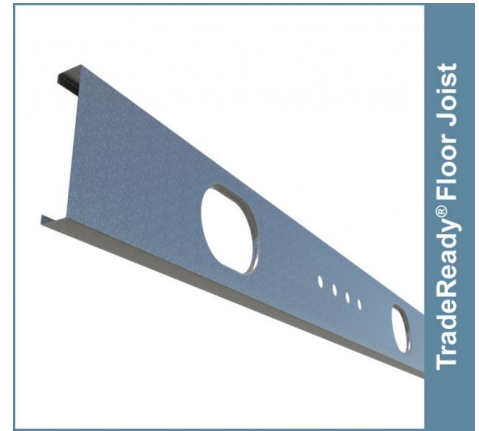
Sustainability Credits:

For more details and LEED letters contact Technical Services at 888-437-3244 or visit www.clarkdietrich.com/LEED

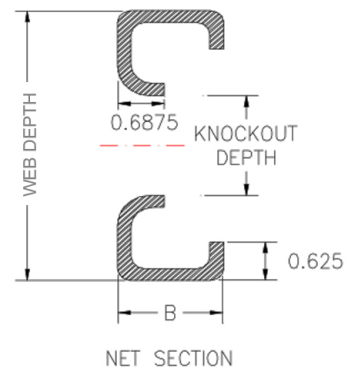
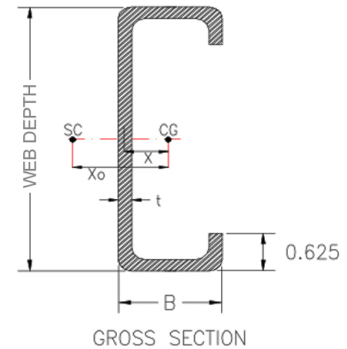
LEED v4 MR Credit -- Building Product Disclosure and Optimization: EPD (1 point) - Sourcing of Raw Materials (1 point) - Material Ingredients (1 point) - Construction and Demolition Waste Management (up to 2 points) - Innovation Credit (up to 2 points).

LEED 2009 Credit MR 2 & MR 4 -- ClarkDietrich's steel products are 100% recyclable and have a national average recycled content of 34.2% (19.8% post-consumer and 14.4% pre-consumer). If seeking a higher number to meet Credit MR 5, please contact us at (info@clarkdietrich.com / 888-437-3244)

05.40.00 (Cold-Formed Metal Framing)



TradeReady® Floor Joist



Project Information

Name:
Address:

Contractor Information

Name:
Contact:
Phone:
Fax:

Architect Information

Name:
Contact:
Phone:
Fax: