

## Archmaker™ Corner Bead

**Provides true, uniform, curved, or arched reinforcement**

Conforms to most arched and curved designs. #2 is a heavier version of the corner bead used for increased damage resistance. #1XArch and #2XArch are designed with a shorter, 1-1/2" flange for narrow returns.

Produced with exterior grade-PVC and have a uniform thickness with feathering at the flange ends. Smooth, rounded noses and easily-bent Archmaker™ corners provide solutions across a variety of conditions. Provides hard-to-damage, rust-proof, and straight corners. Large triangular perforations allow material to easily flow through and bond to the substrate for a more durable corner. Standard length is 10ft. on all corner beads.

**Applications: Stucco**

### Product Data & Ordering Information:

Product code	Ground	Size (in.)	Pcs./Box
#1Arch	All	2-1/2 x 2-1/2	50
#2Arch	All	2-3/4 x 2-3/4	40
#1XArch	All	2-1/2 x 1-1/2	50
#2XArch	All	2-3/4 x 1-1/2	40

Colors available: Standard color White or Tan, Brown, Gray and Black. Call for pricing.

### ASTM & Code Standards

#### Product Specifications

- ASTM D638 - Standard Test Method for Tensile Properties of Plastics
- ASTM D790 - Standard Test Methods for Flexural Properties of Unreinforced and Reinforced Plastics and Electrical Insulating Materials
- ASTM D256 - Standard test Methods for Determining the Izod Pendulum Impact Resistance of Plastics
- ASTM D648 - Standard Test Method for Deflection Temperature of Plastics Under Flexural Load in the Edgewise Position
- ASTM D696 - Standard Test Method for Coefficient of Linear Thermal Expansion of Plastics Between Negative 30 Degrees Celsius and 30 Degrees Celsius with a Vitreous Silica Dilatometer
- ASTM D1784 - Standard Classification System and Basis for Specification for Rigid Poly Vinyl Chloride (PVC) Compounds and Chlorinated Poly Vinyl Chloride (CPVC) Compounds
- ASTM D4216 Cell Class 13244C - Standard Specification for Rigid Poly Vinyl Chloride (PVC) and Related PVC and Chlorinated Poly Vinyl Chloride (CPVC) Building Products Compounds

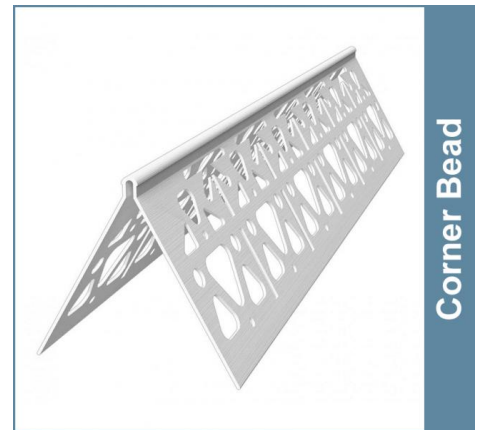
#### Installation Standards

- ASTM C1861 - Standard Specification for Lathing and Furring Accessories, and Fasteners, for Interior and Exterior Portland Cement-Based Plaster
- ASTM C1063 - Standard Specification for Installation of Lathing and Furring to Receive Interior and Exterior Portland Cement-Based Plaster. Table, 1, PVC for Exterior.
- ASTM C1780 - Standard Practice for Installation Methods for Cement-Based Adhered Masonry Veneer
- ASTM C841 - Standard Specification for Installation of Interior Lathing and Furring
- SDS & Product Certification Information is available at [www.clarkdietrich.com/SupportDocs](http://www.clarkdietrich.com/SupportDocs)

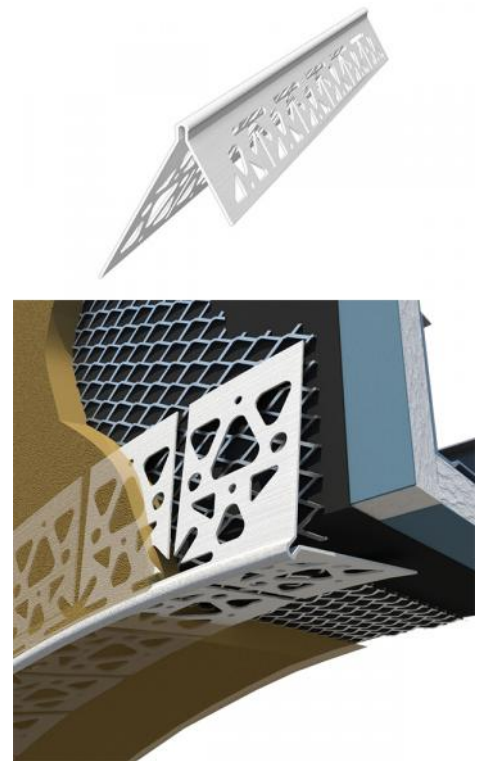
### Storage

All stored materials shall be kept dry. Materials shall be stacked off the ground, supported on a level platform, and protected from the weather.

### 09.22.00 (Supports for Plaster)



Corner Bead



### Project Information

Name:  
Address:

### Contractor Information

Name:  
Contact:  
Phone:  
Fax:

### Architect Information

Name:  
Contact:  
Phone:  
Fax: