

Control Joint

Designed to relieve stress and assist in controlling cracking in large areas of walls and ceilings

Flat flange for thinner, 1-Coat applications. Control Joints help with the embedment of the lath and flange while assisting with tying requirements of discontinuous lath to the joint.

Applications: Stucco

Product Data & Ordering Information:

Product code	Ground	Overall Width	Length	Pcs./Box
1538	3/8"	4"	10'	35
1550	1/2"	4"	10'	35
1558	5/8"	4"	10'	30
1575	3/4"	4"	10'	26
1578	7/8"	4"	10'	20
15100	1"	4"	10'	20

Note: Connector clips are provided except with 3/8" ground.
 Colors available: Standard color White or Tan, Brown, Gray and Black. Call for pricing.

ASTM & Code Standards

Product Specifications

- ASTM D638 - Standard Test Method for Tensile Properties of Plastics
- ASTM D790 - Standard Test Methods for Flexural Properties of Unreinforced and Reinforced Plastics and Electrical Insulating Materials
- ASTM D256 - Standard test Methods for Determining the Izod Pendulum Impact Resistance of Plastics
- ASTM D648 - Standard Test Method for Deflection Temperature of Plastics Under Flexural Load in the Edgewise Position
- ASTM D696 - Standard Test Method for Coefficient of Linear Thermal Expansion of Plastics Between Negative 30 Degress Celsius and 30 Degrees Celsius with a Vitreous Silica Dilatometer
- ASTM D1784 - Standard Classification System and Basis for Specification for Rigid Poly Vinyl Chloride (PVC) Compounds and Chlorinated Poly Vinyl Chloride (CPVC) Compounds
- ASTM D4216 Cell Class 13244C - Standard Specification for Rigid Poly Vinyl Chloride (PVC) and Related PVC and Chlorinated Poly Vinyl Chloride (CPVC) Building Products Compounds

Installation Standards

- ASTM C1861 - Standard Specification for Lathing and Furring Accessories, and Fasteners, for Interior and Exterior Portland Cement-Based Plaster
- ASTM C1063 - Standard Specification for Installation of Lathing and Furring to Receive Interior and Exterior Portland Cement-Based Plaster. Table, 1, PVC for Exterior.
- ASTM C1780 - Standard Practice for Installation Methods for Cement-Based Adhered Masonry Veneer
- ASTM C841 - Standard Specification for Installation of Interior Lathing and Furring
- SDS & Product Certification Information is available at www.clarkdietrich.com/SupportDocs

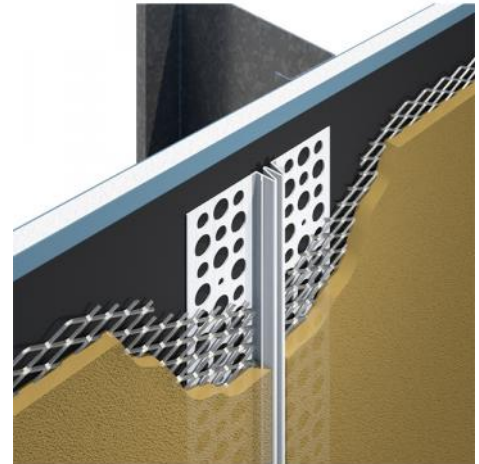
Storage

All stored materials shall be kept dry. Materials shall be stacked off the ground, supported on a level platform, and protected from the weather.

09.22.00 (Supports for Plaster)



Control Joint



Project Information

Name:
Address:

Contractor Information

Name:
Contact:
Phone:
Fax:

Architect Information

Name:
Contact:
Phone:
Fax: