

BUILD BISON STRONG

**DRYWALL & FINISHING
SOLUTIONS**

www.drywall.com



CONTINENTAL™
BUILDING PRODUCTS



CONTINENTAL™
BUILDING PRODUCTS

HISTORY

A LEGACY OF DOING RIGHT

WE'RE COMMITTED TO DOING ONE THING
AND DOING IT RIGHT — DELIVER CONSISTENT,
HIGH-QUALITY DRYWALL AND FINISHING PRODUCTS
100% OF THE TIME.

Continental Building Products is a North American leader in wallboard and joint compound materials. Our heritage in North America begins in 1956, when we first established ourselves on the continent as part of Lafarge. In the 1990s, Lafarge entered the drywall market and began embracing synthetic gypsum as a primary raw material near the decade's end, as synthetic gypsum offered a new level of product consistency and environmental sustainability.

In 2013, Lafarge Gypsum transformed into its own company – Continental Building Products, a name that honors our renewed focus on North America. One year later, Continental became a publicly traded company (CBPX) on the New York Stock Exchange.

We're excited to continue working alongside our customers to build a strong future together, rooted in our tradition of working with them to get the job done right. We combine operational excellence, sustainable practices and personalized service to deliver solutions as straightforward as they are sincere, as proactive as they are flexible, and as fast as they are safe. Our people pair a can-do attitude with relentless focus to solve customer challenges tenaciously—and ultimately deliver streamlined operations. We leverage local production facilities and anticipate emerging needs to drive speed and economic value.

At Continental, we'll be in the business of doing the job right for generations to come. Because we're here to build meaningful, long-term partnerships with customers and communities.

SUSTAINABILITY

MAKING A POSITIVE IMPACT

CONTINENTAL IS COMMITTED TO MAKING A DIFFERENCE IN OUR COMMUNITY. WE SUPPORT MANY EFFORTS THAT POSITIVELY IMPACT OUR ENVIRONMENT AND COMMUNITIES.

THE RETURN OF THE BISON

To celebrate its 125th anniversary in 2014, the Smithsonian's National Zoo brought back the animal that sparked the conservation movement in the United States: the American bison. Continental is proudly sponsoring this exhibit. The bison's return from near extinction represents one of the greatest feats achieved by the conservation movement. The National Zoo was formed to promote the bison and its protection, and it is now committed to making this new bison exhibit an engaging, attractive and educational highlight for Zoo visitors.

PARTNERING WITH THE WILDLIFE HABITAT COUNCIL

In an effort to conserve and create wildlife habitats at its sites across North America, Continental Building Products has teamed up with the Wildlife Habitat Council (WHC). Together with community groups and others, Continental is working to make its sites as wildlife-friendly as possible by protecting and enhancing habitats. WHC has certified a number of Continental sites as wildlife habitats in recognition of Continental's accomplishments in this area. In fact, Continental's facility in Silver Grove, Kentucky, is the first North American drywall plant (and among the first 53 sites ever) to receive the Certified Corporate Lands (CCL) honor awarded by the Wildlife Habitat Council.



LEED- LEADING PRODUCTION

99% RECYCLED.* 100% OF THE TIME.

Continental is the only North American drywall manufacturer to utilize recycled, synthetic gypsum for all of its drywall products, using the byproduct of coal-fired power plants. Not just at a few plants — we use 100% synthetic gypsum at every plant, for every product. Our commitment to sustainability throughout North America helps you confidently meet the demands of LEED-certified construction, and ultimately build a cleaner world. For more information, please visit <http://continental-bp.com/en/sustainability/sustainable-building>.

*Glass mat faced products have 94% recycled content.

**Some products are shipped by rail per LEED Option 2 (July 2012 addendum)
Regional Credit based on rail distance divided by a factor of 3.

BUCHANAN, NY 10511



Extraction Location:

100% Newburg, MD 20664
Distance to plant: approx. 250 miles

SILVER GROVE, KY 41085



Extraction Locations:

50% Moscow, OH 45153
50% North Bend, OH 45051
Distance to plant: 20 miles

PALATKA, FL 32177



Extraction Location:

100% Palatka, FL 32177
Distance to plant: less than 1 mile

500
mile radius**

500
mile radius**

500
mile radius**

1,500
mile radius

TABLE OF CONTENTS

BISON BOARD® DRYWALL PRODUCTS

| | |
|--------------------------------|----|
| Standard Products | 2 |
| Abuse-Resistant Products..... | 8 |
| Glass Mat Faced Products | 9 |
| Level 5 Products | 12 |
| Mold-Resistant Products..... | 14 |
| Shaftliner Board Products..... | 18 |

RAPID COAT® FINISHING PRODUCTS

| | |
|------------------|----|
| Ready-Mixed..... | 20 |
|------------------|----|

RAPID JOINT® FINISHING PRODUCTS

| | |
|--------------------|----|
| Setting Type | 22 |
|--------------------|----|

Designed To Get The Job Done Right



STANDARD DRYWALL PRODUCTS

REGULAR DRYWALL

Drywall designed to meet most general construction needs for interior wall and ceiling applications.



| CORE TYPE | DIMENSIONS | | | EDGE | | | | | STANDARDS | | |
|-----------|-----------------|-----------------|---------|---------|--------|------------|----------------|---------|--|-----------------------------------|----------|
| | L | W | TH | Tapered | Square | Round Edge | Double Beveled | Beveled | ASTM | FEDERAL | CAN/CSA |
| Regular | 8 ft. | 4 ft. | 1/4 in. | • | | | | | C1396/C1396M (Section 5) and C36 | SS-L-30d, Type III, Grade R | A82.27-M |
| Regular | 8 ft. to 12 ft. | 4 ft. | 3/8 in. | • | | | | | C1396/C1396M (Section 5) and C36 | SS-L-30d, Type III, Grade R | A82.27-M |
| Regular | 8 ft. to 16 ft. | 4 ft. 54 in. | 1/2 in. | • | • | • | | | C1396/C1396M (Section 5) and C36 | SS-L-30d, Type III, Grade R | A82.27-M |

PLEASE NOTE: Some products are only available in certain geographic regions, or by special order. Safety Data Sheets (SDS) are available for all Continental products upon request. For more information not covered here, please call 800.237.5505 (USA), 866.649.7786 (Canada), or visit www.continental-bp.com.



STANDARD DRYWALL PRODUCTS

LIFTLITE®

Regular drywall formulated to be up to 25% lighter than standard 1/2" drywall, making it easier to lift, carry and install. LiftLite can be used on both walls and ceilings, eliminating the need for two different types of drywall and reducing jobsite waste.



| CORE TYPE | DIMENSIONS | | | EDGE | | | | | STANDARDS | | |
|-----------|--|-----------------|---------|---------|--------|------------|----------------|---------|--|-----------------------------------|----------|
| | L | W | TH | Tapered | Square | Round Edge | Double Beveled | Beveled | ASTM | FEDERAL | CAN/CSA |
| Regular | 8 ft., 10 ft., 12 ft. 12 ft. and 14 ft. | 4 ft. 54 in. | 1/2 in. | • | | | | | C1396/C1396M (Sections 5 and 12) and C36 | SS-L-30d, Type III, Grade R | A82.27-M |

LIFTLITE® FIRECHECK® 30

Regular drywall formulated to be up to 30% lighter than traditional 5/8 in. Type X drywall. This makes it easier to lift, carry and install. Enhanced with glass fibers that provide greater strength, LiftLite Firecheck 30 can be used for both **non-fire-rated** walls and ceilings—saving time and energy with faster installation. Listed for use in UL Design W424. Not available in all markets. Please call your area sales representative for ordering details.



| CORE TYPE | DIMENSIONS | | | EDGE | | | | | STANDARDS | | |
|-----------|-----------------------|-------|---------|---------|--------|------------|----------------|---------|---|-----------------------------------|----------|
| | L | W | TH | Tapered | Square | Round Edge | Double Beveled | Beveled | ASTM | FEDERAL | CAN/CSA |
| Regular | 8 ft., 10 ft., 12 ft. | 4 ft. | 5/8 in. | • | | | | | C1396/C1396M (Sections 5) and C36 | SS-L-30d, Type III, Grade R | A82.27-M |

PLEASE NOTE: Some products are only available in certain geographic regions, or by special order. Safety Data Sheets (SDS) are available for all Continental products upon request. For more information not covered here, please call 800.237.5505 (USA), 866.649.7786 (Canada), or visit www.continental-bp.com.



STANDARD DRYWALL PRODUCTS

FIRECHECK® TYPE C

Drywall enhanced with glass fibers and other ingredients for premium fire protection for interior walls, ceilings, and area separations.



| CORE TYPE | DIMENSIONS | | | EDGE | | | | | STANDARDS | | |
|-----------|-----------------|-------|------------------------|---------|--------|------------|----------------|---------|---|-----------------------------------|---------------------|
| | L | W | TH | Tapered | Square | Round Edge | Double Beveled | Beveled | ASTM | FEDERAL | CAN/CSA |
| Type C | 6 ft. to 16 ft. | 4 ft. | 1/2 in. and 5/8 in. | • • | | | | | C1396/C1396M (Sections 5) and C36, Type X, Premium | SS-L-30d, Type III, Grade X | A82.27-M, Type X |

FIRECHECK® TYPE X

Drywall enhanced with glass fibers to offer greater strength and fire protection for interior walls and ceilings.



| CORE TYPE | DIMENSIONS | | | EDGE | | | | | STANDARDS | | |
|-----------|-----------------|---------------------|---------|---------|--------|------------|----------------|---------|--|-----------------------------------|---------------------|
| | L | W | TH | Tapered | Square | Round Edge | Double Beveled | Beveled | ASTM | FEDERAL | CAN/CSA |
| Type X | 6 ft. to 16 ft. | 4 ft. and 54 in. | 5/8 in. | • | | • | | | C1396/C1396M (Section 5) and C36, Type X | SS-L-30d, Type III, Grade X | A82.27-M, Type X |

NYC MEA # 204-08-M

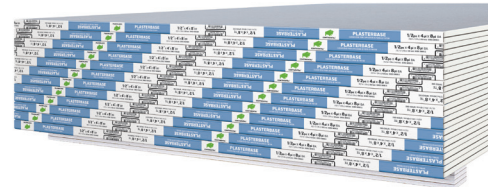
PLEASE NOTE: Some products are only available in certain geographic regions, or by special order. Safety Data Sheets (SDS) are available for all Continental products upon request. For more information not covered here, please call 800.237.5505 (USA), 866.649.7786 (Canada), or visit www.continental-bp.com.



STANDARD DRYWALL PRODUCTS

PLASTERBASE

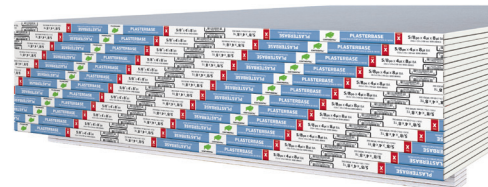
A base-layer gypsum board for interior veneer plaster-finished walls and ceilings. Its special-bonding blue-gray veneer face paper creates an optimum plaster “working” rate and increases plaster adhesion. Accommodates up to two veneer plaster finish coats.



| CORE TYPE | DIMENSIONS | | | EDGE | | | | | STANDARDS | | |
|-----------|-----------------|-------|---------|---------|--------|------------|----------------|---------|--|----------------------------------|----------|
| | L | W | TH | Tapered | Square | Round Edge | Double Beveled | Beveled | ASTM | FEDERAL | CAN/CSA |
| Regular | 8 ft. to 12 ft. | 4 ft. | 1/2 in. | • | | | | | C1396/C1396M (Section 10) and C588 | SS-L-30d, Type VI, Grade R | A82.27-M |

FIRECHECK® PLASTERBASE TYPE X

A base-layer gypsum board with a non-combustible gypsum core, enhanced with glass fibers for interior veneer plaster-finished wall and ceiling applications that require fire resistance.



| CORE TYPE | DIMENSIONS | | | EDGE | | | | | STANDARDS | | |
|-----------|-----------------|-------|---------|---------|--------|------------|----------------|---------|---|----------------------------------|---------------------|
| | L | W | TH | Tapered | Square | Round Edge | Double Beveled | Beveled | ASTM | FEDERAL | CAN/CSA |
| Type X | 8 ft. to 12 ft. | 4 ft. | 5/8 in. | • | | | | | C1396/C1396M (Section 10) and C588, Type X | SS-L-30d, Type VI, Grade X | A82.27-M, Type X |

NYC MEA # 204-08-M

PLEASE NOTE: Some products are only available in certain geographic regions, or by special order. Safety Data Sheets (SDS) are available for all Continental products upon request. For more information not covered here, please call 800.237.5505 (USA), 866.649.7786 (Canada), or visit www.continental-bp.com.



STANDARD DRYWALL PRODUCTS

SAGCHECK®

Strengthened, sag-resistant drywall for interior ceiling applications that is designed to be sag-resistant under high-humidity conditions and wet-application texturing.



| CORE TYPE | DIMENSIONS | | | EDGE | | | | | STANDARDS | | |
|-----------|-----------------|-------|---------|---------|--------|------------|----------------|---------|--|-----------------------------|----------|
| | L | W | TH | Tapered | Square | Round Edge | Double Beveled | Beveled | ASTM | FEDERAL | CAN/CSA |
| Regular | 8 ft. to 16 ft. | 4 ft. | 1/2 in. | • | | | | | C1396/C1396M (Section 12), C1395 and C36 | SS-L-30d, Type III, Grade R | A82.27-M |

SOFFITBOARD

Weather-resistant drywall for sheltered exterior ceiling and soffit areas such as carports, covered walkways, parking areas, open porches and the soffit side of eaves. Designed to withstand indirect exposure to moisture and enhanced to resist sagging.



| CORE TYPE | DIMENSIONS | | | EDGE | | | | | STANDARDS | | |
|-----------|-----------------|-------|---------|---------|--------|------------|----------------|---------|-----------------------------------|---------|----------|
| | L | W | TH | Tapered | Square | Round Edge | Double Beveled | Beveled | ASTM | FEDERAL | CAN/CSA |
| Regular | 8 ft. to 12 ft. | 4 ft. | 1/2 in. | | • | • | | | C1396/C1396M (Section 8) and C931 | n/a | A82.27-M |

PLEASE NOTE: Some products are only available in certain geographic regions, or by special order. Safety Data Sheets (SDS) are available for all Continental products upon request. For more information not covered here, please call 800.237.5505 (USA), 866.649.7786 (Canada), or visit www.continental-bp.com.



STANDARD DRYWALL PRODUCTS

FIRECHECK® SOFFITBOARD TYPE X

Fire- and weather-resistant drywall for sheltered exterior ceiling and soffit areas such as carports, covered walkways, parking areas, open porches and the soffit side of eaves. Designed to withstand indirect exposure to moisture and enhanced to resist sagging.



| CORE TYPE | DIMENSIONS | | | EDGE | | | | | STANDARDS | | |
|-----------|-----------------|-------|---------|---------|--------|------------|----------------|---------|---|---------|------------------|
| | L | W | TH | Tapered | Square | Round Edge | Double Beveled | Beveled | ASTM | FEDERAL | CAN/CSA |
| Type X | 8 ft. to 12 ft. | 4 ft. | 5/8 in. | | • | • | | | C1396/C1396M (Section 8) and C931, Type X | n/a | A82.27-M, Type X |

FIRECHECK® SOFFITBOARD TYPE C

Fire- and weather-resistant drywall for sheltered exterior ceiling and soffit areas such as carports, covered walkways, parking areas, open porches and the soffit side of eaves. Designed to withstand indirect exposure to moisture and enhanced to resist sagging.



| CORE TYPE | DIMENSIONS | | | EDGE | | | | | STANDARDS | | |
|-----------|-----------------|-------|--------------------|---------|--------|------------|----------------|---------|---|---------|------------------|
| | L | W | TH | Tapered | Square | Round Edge | Double Beveled | Beveled | ASTM | FEDERAL | CAN/CSA |
| Type X | 8 ft. to 12 ft. | 4 ft. | 1/2 in. 5/8 in. | | • | • | | | C1396/C1396M (Section 8) and C931, Type X Premium | n/a | A82.27-M, Type X |

PLEASE NOTE: Some products are only available in certain geographic regions, or by special order. Safety Data Sheets (SDS) are available for all Continental products upon request. For more information not covered here, please call 800.237.5505 (USA), 866.649.7786 (Canada), or visit www.continental-bp.com.



ABUSE- AND IMPACT-RESISTANT DRYWALL PRODUCTS

PROTECTA® AR 100 TYPE X WITH MOLD DEFENSE®*

Abuse-resistant drywall consisting of a fiberglass-enhanced, non-combustible, high-density gypsum core with a reinforced heavy facing paper that guards against surface abrasion, indentation, mold and mildew. Achieved a 10 out of 10 per ASTM D3273.



| CORE TYPE | DIMENSIONS | | | EDGE | | | | | STANDARDS | | |
|---|-----------------|-------|---------|---------|--------|------------|----------------|---------|---|-----------------------------------|---------------------|
| | L | W | TH | Tapered | Square | Round Edge | Double Beveled | Beveled | ASTM | FEDERAL | CAN/CSA |
| Type X Abuse-Resistant Mold-Resistant | 8 ft. to 12 ft. | 4 ft. | 5/8 in. | • | | | | | C1396/C1396M (Section 5), C36, Type X, C1629 and D3273 | SS-L-30d, Type III, Grade X | A82.27-M, Type X |

NYC MEA # 204-08-M

PROTECTA® HIR 300 TYPE X WITH MOLD DEFENSE®*

High impact-, fire- and mold-resistant drywall consisting of a fiberglass-enhanced, non-combustible, high-density, synthetic gypsum core with reinforced strong facers that guard against surface abrasion, indentation, mold and mildew. Achieved a 10 out of 10 per ASTM D3273.



| CORE TYPE | DIMENSIONS | | | EDGE | | | | | STANDARDS | | |
|--|------------------|-------|---------|---------|--------|------------|----------------|---------|---|-----------------------------------|---------------------|
| | L | W | TH | Tapered | Square | Round Edge | Double Beveled | Beveled | ASTM | FEDERAL | CAN/CSA |
| Type X Impact-Resistant Mold-Resistant | 8 ft. and 10 ft. | 4 ft. | 5/8 in. | • | | | | | C1396/C1396M (Section 5), C36, Type X, C1629 and D3273 | SS-L-30d, Type III, Grade X | A82.27-M, Type X |

NYC MEA # 204-08-M

*See Mold Defense disclaimer on page 15.

PLEASE NOTE: Some products are only available in certain geographic regions, or by special order. Safety Data Sheets (SDS) are available for all Continental products upon request. For more information not covered here, please call 800.237.5505 (USA), 866.649.7786 (Canada), or visit www.continental-bp.com.



GLASS-MAT FACED DRYWALL PRODUCTS

WEATHER DEFENSE® PLATINUM SHEATHING*

Moisture- and mold-resistant exterior wall sheathing designed to be covered by an exterior-finish cladding such as siding, brick, masonry veneer or wire-lath stucco. Its specially formulated non-combustible, moisture- and mold-resistant gypsum core is covered with a coated fiberglass mat. Achieved a 10 out of 10 per ASTM D3273.



| CORE TYPE | DIMENSIONS | | | EDGE | | | | | STANDARDS | | |
|---------------------------|------------|-------|---------|---------|--------|------------|----------------|---------|----------------------------|---------|---------|
| | L | W | TH | Tapered | Square | Round Edge | Double Beveled | Beveled | ASTM | FEDERAL | CAN/CSA |
| Treated Mold-Resistant | 8 ft. | 4 ft. | 1/2 in. | | • | | | | C1177/ C1177M and D3273 | n/a | n/a |

Florida State Report FL15570

WEATHER DEFENSE® PLATINUM SHEATHING TYPE X*

Moisture-, mold- and fire-resistant exterior wall sheathing designed to be covered by an exterior-finish cladding such as siding, brick, masonry veneer or wire-lath stucco. Its specially formulated fire-rated, moisture- and mold-resistant gypsum core is covered with a coated fiberglass mat. Achieved a 10 out of 10 per ASTM D3273.



| CORE TYPE | DIMENSIONS | | | EDGE | | | | | STANDARDS | | |
|-------------------------------------|------------|-------|---------|---------|--------|------------|----------------|---------|--------------------------------------|---------|---------|
| | L | W | TH | Tapered | Square | Round Edge | Double Beveled | Beveled | ASTM | FEDERAL | CAN/CSA |
| Type X Treated Mold-Resistant | 8 ft. | 4 ft. | 5/8 in. | | • | | | | C1177/C1177M, Type X and D3273 | n/a | n/a |

Florida State Report FL15570

*See Weather Defense Platinum disclaimer on page 11.

PLEASE NOTE: Some products are only available in certain geographic regions, or by special order. Safety Data Sheets (SDS) are available for all Continental products upon request. For more information not covered here, please call 800.237.5505 (USA), 866.649.7786 (Canada), or visit www.continental-bp.com.



GLASS-MAT FACED DRYWALL PRODUCTS

WEATHER DEFENSE® PLATINUM INTERIOR*

High-performance interior drywall with a special wet-area board formulation, treated core and fiberglass mat facer technology, designed to provide exceptional moisture and mold protection for interior applications and exterior soffits. Achieved a 10 out of 10 per ASTM D3273.



| CORE TYPE | DIMENSIONS | | | EDGE | | | | | STANDARDS | | |
|---------------------------|-----------------|-------|---------|---------|--------|------------|----------------|---------|--|---------|---------|
| | L | W | TH | Tapered | Square | Round Edge | Double Beveled | Beveled | ASTM | FEDERAL | CAN/CSA |
| Treated Mold-Resistant | 8 ft. to 12 ft. | 4 ft. | 1/2 in. | • | | | | | C1658/C1658M (Section 7) and D3273 | n/a | n/a |

WEATHER DEFENSE® PLATINUM INTERIOR TYPE X*

High-performance interior drywall with a special wet-area board formulation, treated core and fiberglass mat facer technology, designed to provide exceptional moisture, mold and fire protection for interior applications and exterior soffits. Achieved a 10 out of 10 per ASTM D3273.



| CORE TYPE | DIMENSIONS | | | EDGE | | | | | STANDARDS | | |
|-------------------------------------|-----------------|-------|---------|---------|--------|------------|----------------|---------|---|---------|---------|
| | L | W | TH | Tapered | Square | Round Edge | Double Beveled | Beveled | ASTM | FEDERAL | CAN/CSA |
| Type X Treated Mold-Resistant | 8 ft. to 12 ft. | 4 ft. | 5/8 in. | • | | | | | C1658/C1658M, (Section 7), Type X and D3273 | n/a | n/a |

*See Weather Defense Platinum disclaimer on page 11.

PLEASE NOTE: Some products are only available in certain geographic regions, or by special order. Safety Data Sheets (SDS) are available for all Continental products upon request. For more information not covered here, please call 800.237.5505 (USA), 866.649.7786 (Canada), or visit www.continental-bp.com.



GLASS-MAT FACED DRYWALL PRODUCTS

WEATHER DEFENSE® PLATINUM SHAFTLINER TYPE X*

For use in lining shafts and stairwells, and for area separation walls in residential housing as well as other interior building applications requiring fire resistance. Achieved 10 out of 10 per ASTM D3273.



| CORE TYPE | DIMENSIONS | | | EDGE | | | | | STANDARDS | | |
|-------------------------------------|-----------------|-------|-------|---------|--------|------------|----------------|---------|--|---------|---------|
| | L | W | TH | Tapered | Square | Round Edge | Double Beveled | Beveled | ASTM | FEDERAL | CAN/CSA |
| Type X Treated Mold-Resistant | 8 ft. to 12 ft. | 2 ft. | 1 in. | | | | • | | C1658/C1658M (Section 6), Type X, Properties of C1396 (Section 6), C442, Type X and D3273 | n/a | n/a |

***WEATHER DEFENSE PLATINUM DISCLAIMER:** Weather Defense Platinum provides extra resistance against the formation of mold, but no product may be considered “mold proof.” The most effective way to avoid the formation of mold and mildew in drywall products is to limit or avoid water exposure during storage and construction, and after construction is complete. Used in combination with appropriate design, handling, construction and installation practices, Weather Defense Platinum drywall can provide increased mold and mildew resistance on its surface. ASTM D3273 is the “Standard Test Method for Resistance to Growth of Mold on the Surface of Interior Coatings in an Environmental Chamber” and is performed under controlled laboratory conditions. Actual storage, handling, construction and installation conditions may vary from the environment created in the independent lab, and the use of the product in actual conditions may not replicate the ASTM results.

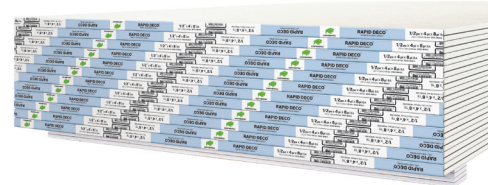
PLEASE NOTE: Some products are only available in certain geographic regions, or by special order. Safety Data Sheets (SDS) are available for all Continental products upon request. For more information not covered here, please call 800.237.5505 (USA), 866.649.7786 (Canada), or visit www.continental-bp.com.



LEVEL 5 DRYWALL PRODUCTS

RAPID DECO® LEVEL 5

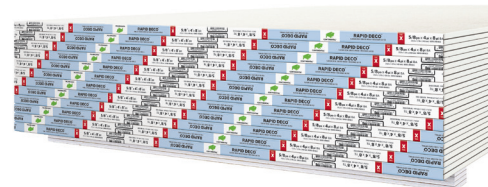
Factory-applied skim-coated drywall designed to provide an equivalent substitution to a field-applied Level 5 finish and address technical performance and design issues concerning critical lighting and special paint treatment requirements.



| CORE TYPE | DIMENSIONS | | | EDGE | | | | | STANDARDS | | |
|-----------|-------------------|-------|---------|---------|--------|------------|----------------|---------|---|-----------------------------|----------|
| | L | W | TH | Tapered | Square | Round Edge | Double Beveled | Beveled | ASTM | FEDERAL | CAN/CSA |
| Regular | 10 ft. and 12 ft. | 4 ft. | 1/2 in. | • | | | | | C1396/C1396M (Section 5), C36, and C840 Level 5 | SS-L-30d, Type III, Grade R | A82.27-M |

RAPID DECO® LEVEL 5 TYPE X

Fire-rated, factory-applied skim-coated drywall designed to provide an equivalent substitution to a field-applied Level 5 finish and address technical performance and design issues concerning critical lighting and special paint treatment requirements.



| CORE TYPE | DIMENSIONS | | | EDGE | | | | | STANDARDS | | |
|-----------|-----------------|-------|---------|---------|--------|------------|----------------|---------|--|-----------------------------|------------------|
| | L | W | TH | Tapered | Square | Round Edge | Double Beveled | Beveled | ASTM | FEDERAL | CAN/CSA |
| Type X | 8 ft. to 12 ft. | 4 ft. | 5/8 in. | • | | | | | C1396/C1396M (Section 5), C36, Type X and C840 Level 5 | SS-L-30d, Type III, Grade X | A82.27-M, Type X |

NYC MEA #204-08-M

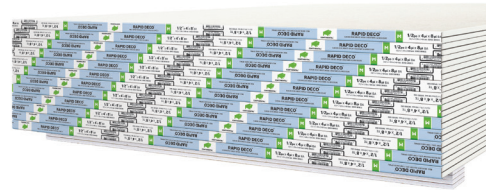
PLEASE NOTE: Some products are only available in certain geographic regions, or by special order. Safety Data Sheets (SDS) are available for all Continental products upon request. For more information not covered here, please call 800.237.5505 (USA), 866.649.7786 (Canada), or visit www.continental-bp.com.



LEVEL 5 DRYWALL PRODUCTS

RAPID DECO® LEVEL 5 WITH MOLD DEFENSE®*

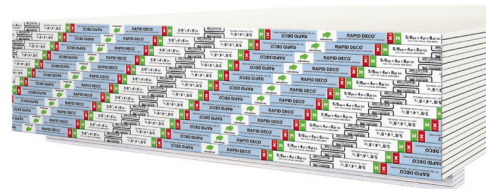
Mold- and mildew-resistant, factory-applied skim-coated drywall designed to provide an equivalent substitution to a field-applied Level 5 finish and address technical performance and design issues concerning critical lighting and special paint treatment requirements. Achieved a 10 out of 10 per ASTM D3273.



| CORE TYPE | DIMENSIONS | | | EDGE | | | | | STANDARDS | | |
|---------------------------|-------------------|-------|---------|---------|--------|------------|----------------|---------|--|-----------------------------------|----------|
| | L | W | TH | Tapered | Square | Round Edge | Double Beveled | Beveled | ASTM | FEDERAL | CAN/CSA |
| Regular Mold-Resistant | 10 ft. and 12 ft. | 4 ft. | 1/2 in. | • | | | | | C1396/C1396M (Section 5), C36, D3273 and C840 Level 5 | SS-L-30d, Type III, Grade R | A82.27-M |

RAPID DECO® LEVEL 5 TYPE X WITH MOLD DEFENSE®*

Fire-rated, mold- and mildew-resistant, factory-applied skim-coated drywall designed to provide an equivalent substitution to a field-applied Level 5 finish and address technical performance and design issues concerning critical lighting and special paint treatment requirements. Achieved a 10 out of 10 per ASTM D3273.



| CORE TYPE | DIMENSIONS | | | EDGE | | | | | STANDARDS | | |
|--------------------------|-------------------|-------|---------|---------|--------|------------|----------------|---------|--|-----------------------------------|---------------------|
| | L | W | TH | Tapered | Square | Round Edge | Double Beveled | Beveled | ASTM | FEDERAL | CAN/CSA |
| Type X Mold-Resistant | 10 ft. and 12 ft. | 4 ft. | 5/8 in. | • | | | | | C1396/C1396M (Section 5), C36, Type X, D3273 and C840 Level 5 | SS-L-30d, Type III, Grade X | A82.27-M, Type X |

*See Mold Defense disclaimer on page 15.

PLEASE NOTE: Some products are only available in certain geographic regions, or by special order. Safety Data Sheets (SDS) are available for all Continental products upon request. For more information not covered here, please call 800.237.5505 (USA), 866.649.7786 (Canada), or visit www.continental-bp.com.



MOLD-RESISTANT DRYWALL PRODUCTS

MOLD DEFENSE®*

Designed for use in interior wall and ceiling applications, and offers enhanced protection against mold and mildew, which can cause deterioration and/or stains. Contains a non-combustible, mold-, mildew- and moisture-treated gypsum core with treated paper facings. Achieved a 10 out of 10 per ASTM D3273.



| CORE TYPE | DIMENSIONS | | | EDGE | | | | | STANDARDS | | |
|------------------------|-----------------|-------|---------|---------|--------|------------|----------------|---------|--|-----------------------------|----------|
| | L | W | TH | Tapered | Square | Round Edge | Double Beveled | Beveled | ASTM | FEDERAL | CAN/CSA |
| Treated Mold-Resistant | 8 ft. to 12 ft. | 4 ft. | 1/2 in. | • | | | | | C1396/C1396M (Section 7), C630 and D3273 | SS-L-30d, Type VII, Grade W | A82.27-M |

MOLD DEFENSE® TYPE X*

Enhanced with glass fibers to offer greater strength and fire protection for interior wall and ceiling applications and offers enhanced protection against mold and mildew that can cause deterioration and/or stains. Contains a non-combustible, mold-, mildew- and moisture-treated gypsum core with treated paper facings. Achieved a 10 out of 10 per ASTM D3273.



| CORE TYPE | DIMENSIONS | | | EDGE | | | | | STANDARDS | | |
|-------------------------------|-----------------|-------|---------|---------|--------|------------|----------------|---------|--|--------------------------------|-----------------|
| | L | W | TH | Tapered | Square | Round Edge | Double Beveled | Beveled | ASTM | FEDERAL | CAN/CSA |
| Type X Treated Mold-Resistant | 6 ft. to 12 ft. | 4 ft. | 5/8 in. | • | | | | | C1396/C1396M (Section 7), C630, Type X and D3273 | SS-L-30d, Type VII, Grade W, X | A82.27-M Type X |

*See Mold Defense disclaimer on page 15.

PLEASE NOTE: Some products are only available in certain geographic regions, or by special order. Safety Data Sheets (SDS) are available for all Continental products upon request. For more information not covered here, please call 800.237.5505 (USA), 866.649.7786 (Canada), or visit www.continental-bp.com.



MOLD-RESISTANT DRYWALL PRODUCTS

MOLD DEFENSE® SHAFTLINER TYPE X*

Mold- and fire-resistant drywall designed for use in lining elevator shafts, ventilation shafts, stairwells, for area separation walls in residential housing, and for other interior building applications requiring fire resistance. Achieved a 10 out of 10 per ASTM D 3273.



| CORE TYPE | DIMENSIONS | | | EDGE | | | | | STANDARDS | | |
|-------------------------------------|-----------------|-------|-------|---------|--------|------------|----------------|---------|--|----------------------------------|---------------------|
| | L | W | TH | Tapered | Square | Round Edge | Double Beveled | Beveled | ASTM | FEDERAL | CAN/CSA |
| Type X Treated Mold-Resistant | 8 ft. to 12 ft. | 2 ft. | 1 in. | | | | • | | C1396/C1396M (Section 6) and C442, Type X and D3273 | SS-L-30d, Type IV, Grade X | A82.27-M, Type X |

***MOLD DEFENSE DISCLAIMER:** Mold Defense provides extra resistance against the formation of mold, but no product may be considered “mold proof.” The most effective way to avoid the formation of mold and mildew in drywall products is to limit or avoid water exposure during storage, construction and after construction is complete. Used in combination with appropriate design, handling, construction and installation practices, Mold Defense drywall can provide increased mold and mildew resistance on its surface and in its core. ASTM D3273 is the “Standard Test Method for Resistance to Growth of Mold on the Surface of Interior Coatings in an Environmental Chamber” and is performed under controlled, laboratory conditions. Actual storage, handling, construction and installation conditions may vary from the environment created in the independent lab, and the use of the product in actual conditions may not replicate the ASTM results.

PLEASE NOTE: Some products are only available in certain geographic regions, or by special order. Safety Data Sheets (SDS) are available for all Continental products upon request. For more information not covered here, please call 800.237.5505 (USA), 866.649.7786 (Canada), or visit www.continental-bp.com.



MOLD-RESISTANT DRYWALL PRODUCTS

PROTECTA® AR 100 TYPE X WITH MOLD DEFENSE®*

Abuse-resistant drywall consisting of a fiberglass-enhanced, non-combustible, high-density gypsum core with a reinforced heavy facing paper that guards against surface abrasion, indentation, mold and mildew. Achieved a 10 out of 10 per ASTM D3273.



| CORE TYPE | DIMENSIONS | | | EDGE | | | | | STANDARDS | | |
|---|-----------------|-------|---------|---------|--------|------------|----------------|---------|---|-----------------------------------|---------------------|
| | L | W | TH | Tapered | Square | Round Edge | Double Beveled | Beveled | ASTM | FEDERAL | CAN/CSA |
| Type X Abuse-Resistant Mold-Resistant | 8 ft. to 12 ft. | 4 ft. | 5/8 in. | • | | | | | C1396/C1396M (Section 5), C36, Type X, C1629 and D3273 | SS-L-30d, Type III, Grade X | A82.27-M, Type X |

NYC MEA # 204-08-M

PROTECTA® HIR 300 TYPE X WITH MOLD DEFENSE®*

High impact-, fire- and mold-resistant drywall consisting of a fiberglass-enhanced, non-combustible, high-density, synthetic gypsum core with reinforced strong facers that guard against surface abrasion, indentation, mold and mildew. Achieved a 10 out of 10 per ASTM D3273.



| CORE TYPE | DIMENSIONS | | | EDGE | | | | | STANDARDS | | |
|--|------------------|-------|---------|---------|--------|------------|----------------|---------|---|-----------------------------------|---------------------|
| | L | W | TH | Tapered | Square | Round Edge | Double Beveled | Beveled | ASTM | FEDERAL | CAN/CSA |
| Type X Impact-Resistant Mold-Resistant | 8 ft. and 10 ft. | 4 ft. | 5/8 in. | • | | | | | C1396/C1396M (Section 5), C36, Type X, C1629 and D3273 | SS-L-30d, Type III, Grade X | A82.27-M, Type X |

NYC MEA # 204-08-M

*See Mold Defense disclaimer on page 15.

PLEASE NOTE: Some products are only available in certain geographic regions, or by special order. Safety Data Sheets (SDS) are available for all Continental products upon request. For more information not covered here, please call 800.237.5505 (USA), 866.649.7786 (Canada), or visit www.continental-bp.com.



MOLD-RESISTANT DRYWALL PRODUCTS

RAPID DECO® LEVEL 5 WITH MOLD DEFENSE®*

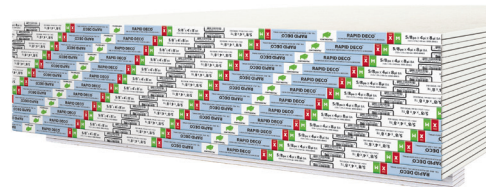
Mold- and mildew-resistant, factory-applied skim-coated drywall designed to provide an equivalent substitution to a field-applied Level 5 finish and address technical performance and design issues concerning critical lighting and special paint treatment requirements. Achieved a 10 out of 10 per ASTM D3273.



| CORE TYPE | DIMENSIONS | | | EDGE | | | | | STANDARDS | | |
|---------------------------|-------------------|-------|---------|---------|--------|------------|----------------|---------|--|-----------------------------------|----------|
| | L | W | TH | Tapered | Square | Round Edge | Double Beveled | Beveled | ASTM | FEDERAL | CAN/CSA |
| Regular Mold-Resistant | 10 ft. and 12 ft. | 4 ft. | 1/2 in. | • | | | | | C1396/C1396M (Section 5), C36, D3273 and C840 Level 5 | SS-L-30d, Type III, Grade R | A82.27-M |

RAPID DECO® LEVEL 5 TYPE X WITH MOLD DEFENSE®*

Fire-rated, mold- and mildew-resistant, factory-applied skim-coated drywall designed to provide an equivalent substitution to a field-applied Level 5 finish and address technical performance and design issues concerning critical lighting and special paint treatment requirements. Achieved a 10 out of 10 per ASTM D3273.



| CORE TYPE | DIMENSIONS | | | EDGE | | | | | STANDARDS | | |
|--------------------------|-------------------|-------|---------|---------|--------|------------|----------------|---------|--|-----------------------------------|---------------------|
| | L | W | TH | Tapered | Square | Round Edge | Double Beveled | Beveled | ASTM | FEDERAL | CAN/CSA |
| Type X Mold-Resistant | 10 ft. and 12 ft. | 4 ft. | 5/8 in. | • | | | | | C1396/C1396M (Section 5), C36, Type X, D3273 and C840 Level 5 | SS-L-30d, Type III, Grade X | A82.27-M, Type X |

*See Mold Defense disclaimer on page 15.

PLEASE NOTE: Some products are only available in certain geographic regions, or by special order. Safety Data Sheets (SDS) are available for all Continental products upon request. For more information not covered here, please call 800.237.5505 (USA), 866.649.7786 (Canada), or visit www.continental-bp.com.



SHAFTLINER BOARD PRODUCTS

SHAFTLINER TYPE X

For use in lining elevator shafts, ventilation shafts and stairwells; for area separation walls in residential housing; and for other interior building applications requiring fire resistance.



| CORE TYPE | DIMENSIONS | | | EDGE | | | | | STANDARDS | | |
|-----------|-----------------|-------|-------|---------|--------|------------|----------------|---------|---|----------------------------|------------------|
| | L | W | TH | Tapered | Square | Round Edge | Double Beveled | Beveled | ASTM | FEDERAL | CAN/CSA |
| Type X | 8 ft. to 12 ft. | 2 ft. | 1 in. | | | | • | | C1396/C1396M (Section 6) and C442, Type X | SS-L-30d, Type IV, Grade X | A82.27-M, Type X |

MOLD DEFENSE® SHAFTLINER TYPE X*

Mold- and fire-resistant drywall designed for use in lining elevator shafts, ventilation shafts and stairwells; for area separation walls in residential housing; and for other interior building applications requiring fire resistance. Achieved 10 out of 10 per ASTM D3273.



| CORE TYPE | DIMENSIONS | | | EDGE | | | | | STANDARDS | | |
|-------------------------------------|-----------------|-------|-------|---------|--------|------------|----------------|---------|---|----------------------------|------------------|
| | L | W | TH | Tapered | Square | Round Edge | Double Beveled | Beveled | ASTM | FEDERAL | CAN/CSA |
| Type X Treated Mold-Resistant | 8 ft. to 12 ft. | 2 ft. | 1 in. | | | | • | | C1396/C1396M (Section 6) and C442, Type X and D3273 | SS-L-30d, Type IV, Grade X | A82.27-M, Type X |

*See Mold Defense disclaimer on page 15.

PLEASE NOTE: Some products are only available in certain geographic regions, or by special order. Safety Data Sheets (SDS) are available for all Continental products upon request. For more information not covered here, please call 800.237.5505 (USA), 866.649.7786 (Canada), or visit www.continental-bp.com.



SHAFTLINER BOARD PRODUCTS

WEATHER DEFENSE® PLATINUM SHAFTLINER TYPE X*

For use in lining shafts and stairwells, and for area separation walls in residential housing as well as other interior building applications requiring fire resistance. Achieved 10 out of 10 per ASTM D3273.



| CORE TYPE | DIMENSIONS | | | EDGE | | | | | STANDARDS | | |
|-------------------------------------|-----------------|-------|-------|---------|--------|------------|----------------|---------|--|---------|---------|
| | L | W | TH | Tapered | Square | Round Edge | Double Beveled | Beveled | ASTM | FEDERAL | CAN/CSA |
| Type X Treated Mold-Resistant | 8 ft. to 12 ft. | 2 ft. | 1 in. | | | | • | | C1658/C1658M (Section 6), Type X, Properties of C1396 (Section 6), C442, Type X and D3273 | n/a | n/a |

*See Weather Defense Platinum disclaimer on page 11.

PLEASE NOTE: Some products are only available in certain geographic regions, or by special order. Safety Data Sheets (SDS) are available for all Continental products upon request. For more information not covered here, please call 800.237.5505 (USA), 866.649.7786 (Canada), or visit www.continental-bp.com.



FINISHING PRODUCTS

RAPID COAT® LIGHTWEIGHT

All-purpose joint compound that provides easy workability with a quick-drying, two-step application. Ideal for use in all phases of drywall finishing: taping, finishing, skim coating, texturing, filling corner beads and trim, and concealing nail or screw dimples. Can also be used as a bonding agent when laminating drywall together.



| CONTAINER | SIZE | COLOR | | | STANDARDS |
|-----------|------------------------|-------|-------|--------|-----------|
| | | White | Beige | Yellow | ASTM |
| Box | 4.5 U.S. gal (17 L) | • | • | • | C475 |
| Box | 3.5 U.S. gal (13.25 L) | • | | | |
| Pail | 4.5 U.S. gal (17 L) | • | • | | |
| Pail | 3.2 U.S. gal (12 L) | • | | | |
| Pail | 1.1 U.S. gal (4 L) | • | | | |
| Pail | 0.66 U.S. gal (2.5 L) | • | | | |

RAPID COAT® MIDWEIGHT

Professional-grade, all-purpose joint compound that provides higher durability and lower shrinkage. Ideal for use in all phases of drywall finishing: taping, finishing, skim coating, texturing, filling corner beads and trim, and concealing nail or screw dimples. Can also be used as a bonding agent when laminating drywall together.



| CONTAINER | SIZE | COLOR | | | STANDARDS |
|-----------|------------------------|-------|--|--|-----------|
| | | White | | | ASTM |
| Box | 50.7 lbs (23 kg) | • | | | C475 |
| Box | 4.5 U.S. gal (17 L) | • | | | |
| Box | 3.5 U.S. gal (13.25 L) | • | | | |
| Pail | 4.5 U.S. gal (17 L) | • | | | |

PLEASE NOTE: Some products are only available in certain geographic regions, or by special order. Safety Data Sheets (SDS) are available for all Continental products upon request. For more information not covered here, please call 800.237.5505 (USA), 866.649.7786 (Canada), or visit www.continental-bp.com.

FINISHING PRODUCTS

RAPID COAT® FULLWEIGHT

Professional-grade, all-purpose joint compound that provides superior durability and maximum bond. Ideal for use in all phases of drywall finishing: taping, finishing, skim coating, texturing, filling corner beads and trim, and concealing nail or screw dimples. Can also be used as a bonding agent when laminating drywall together.



| CONTAINER | SIZE | COLOR | STANDARDS |
|-----------|------------------|-------|-----------|
| | | White | ASTM |
| Box | 59.5 lbs (27 kg) | | C475 |
| Box | 50 lbs (22.7 kg) | | |
| Pail | 61.7 lbs (28 kg) | | |

RAPID COAT LOW DUST®

All-purpose joint compound specially formulated to reduce airborne dust generated during sanding. Ideal for use in all phases of drywall finishing: taping, finishing, skim coating, texturing, filling corner beads and trim, and concealing nail or screw dimples. Can also be used as a bonding agent when laminating drywall together.



| CONTAINER | SIZE | COLOR | STANDARDS |
|-----------|---------------------|-------|-----------|
| | | White | ASTM |
| Box | 4.5 U.S. gal (17 L) | | C475 |
| Pail | 3.2 U.S. gal (12 L) | | |
| Pail | 1 U.S. gal (3.8 L) | | |

PLEASE NOTE: Some products are only available in certain geographic regions, or by special order. Safety Data Sheets (SDS) are available for all Continental products upon request. For more information not covered here, please call 800.237.5505 (USA), 866.649.7786 (Canada), or visit www.continental-bp.com.

FINISHING PRODUCTS

RAPID COAT PRO*

Professional-grade joint compound that applies exceptionally smoothly and sands easily with lower shrinkage. Packaged in taller boxes for easier pouring. Ideal for use in all phases of drywall finishing: taping, finishing, skim coating, texturing, filling corner beads and trim, and concealing nail or screw dimples. Can also be used as a bonding agent when laminating drywall together.

* Only available in Canada



| CONTAINER | SIZE | COLOR | STANDARDS |
|-----------|------------------|-------|-----------|
| | | White | ASTM |
| Box | 50.7 lbs (23 kg) | • | C475 |

RAPID DECO® LEVEL 5

Joint compound specifically formulated to be used with Continental Rapid Deco Level 5 skim-coated drywall. Can also be used as a traditional skim-coat material for non-coated drywall. Ideal for use in all phases of drywall finishing: taping, finishing, skim coating, texturing, filling corner beads and trim, and concealing nail or screw dimples.



| CONTAINER | SIZE | COLOR | STANDARDS |
|-----------|---------------------|-------|----------------------|
| | | White | ASTM |
| Pail | 4.5 U.S. gal (17 L) | • | C475 C840 Level 5 |

RAPID JOINT® (20, 45, 90, 210)

Chemically activated setting-type joint compound with time-controlled hardening properties. Durable and excellent for most pre-filling, taping and first or finish coating applications. Available in four set times (20, 45, 90 and 210 minutes).



| CONTAINER | SIZE | COLOR | STANDARDS |
|-----------|------------------|-------|-----------|
| | | White | ASTM |
| Bag | 18 lbs (8.17 kg) | • | C475 |

www.drywall.com



CONTINENTAL™
BUILDING PRODUCTS

800.237.5505 USA | 866.649.7786 Canada

