

**CRANE**

Composites

STYLED + DURABLE  
**surface systems**



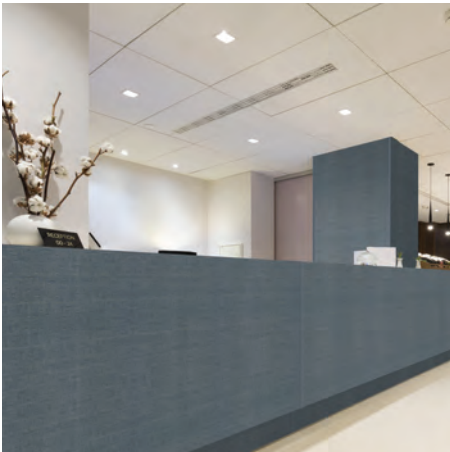
**DESIGNS** collections + custom imaged wall panels  
OVER 65 OPTIONS + ENDLESS CUSTOM OPPORTUNITIES



## DESIGNS collections + custom imaged wall panels



PATHWAYS COLLECTION | BEAM (06PW)



CLASSIC COLLECTION | COASTAL CANVAS (007C)



CLASSIC COLLECTION | CAMEL CANVAS (010C)

DESIGNS resilient wall coverings, bring both style and durability into any commercial space. No need to sacrifice aesthetics for hygiene.

Imagine your artwork on a wall. Crane Composites brings your concept to reality with vibrant breathtaking details. Ask for alterations to one of our existing patterns or create your own unique design. Give life to your custom look in any arrangement you choose including logos, artwork, or corporate identity with vibrant high-resolution imagery.

### style + hygiene

When you need grace under pressure, fiberglass reinforced plastic (FRP) panels are the perfect choice for your walls. From moisture and germs to daily dirt and grime, our FRP panels are able to stand up to even the toughest environments - without sacrificing style and beauty.

As the first and largest global manufacturer of FRP wall paneling, Crane Composites offers the industry's most innovative and resilient FRP panels, backed by our expert technical and installation support staff.

order samples at [frpsamples.com](https://frpsamples.com)

## product specs

### AVAILABLE SIZES:

4' x 8' | 4' x 10'

### THICKNESSES:

0.075"

### FIRE RATINGS:

Class A or Class C per ASTM E-84  
CAN/ULC-S102

### ACCESSORIES:

Silhouette Trims Moldings | Aluminum Moldings  
Color Rite™ Color-Matched Silicone Caulk

### APPLICATIONS:

- School Hallways
- Cafeterias
- Restrooms
- Dining Rooms
- Reception Areas
- Health Clubs
- Hospitals

### FEATURES:

- Mold + Mildew Free
- Meets USDA/FSIS Requirements
- Easy to Install
- Cleanable
- Durable

## more than 65 years

A global leading provider of resilient wall and ceiling coverings. Kemlite® was established in 1954 and the company changed names to Crane Composites in 2007. Crane Composites is headquartered in Channahon, IL and all our products are manufactured in the United States. We work with hundreds of distributors, ensuring our products are easily accessible and readily available to our customers.



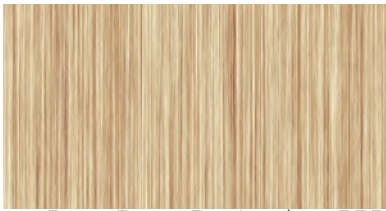
## greenguard certified

All Crane Composites wall and ceiling coverings have earned GREENGUARD Certification for low chemical emissions, issued by UL Environment. This certification reflects our dedication to improving the quality of our products, while using low-emitting materials in their construction.

Thanks to their environmental benefits, the use of Crane Composites products may also contribute to earning LEED® certification.

## The Classic Collection

### WOODGRAIN PATTERNS



Baton Rouge Bamboo | 001BRB



Carolina Cherry | 002CC



Sierra Ash | 018SA



Washington Wood | 008WW



Maryland Maple | 009MM



Tennessee Timber | 003TT



Chestnut Cherry | 622SRP

### CANVAS PATTERNS



Camel Canvas | 010C



Colonial Canvas | 012C



Coastal Canvas | 007C



Corn Silk Canvas | 008C



Cactus Canvas | 009C



Chrome Canvas | 011C

### STONE + NATURAL PATTERNS



True Terrazzo | 005TZ



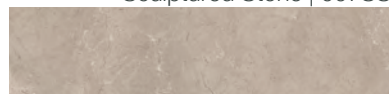
Scattered Stone | 004SS



Maui Marble | 006MM

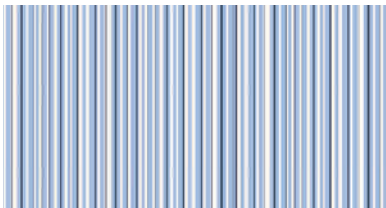


Sculptured Stone | 007SS

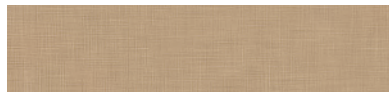


Greystone | 024S

### INNOVATIVE PATTERNS



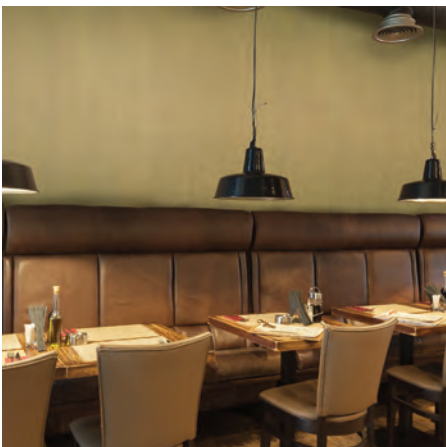
Piri Blue Stripe | 023PBS



Caramel Crosshatch | 013CH



Brushed Metal | 025BM





## The Forest Collection



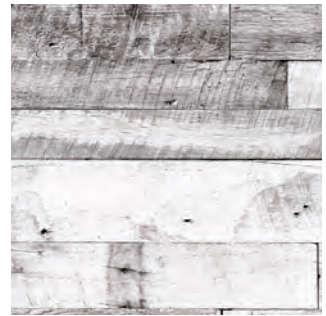
Sabine | 30W  
representative of full panel design



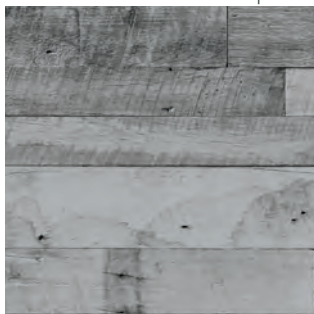
Pike | 31W



Sequoia | 32W



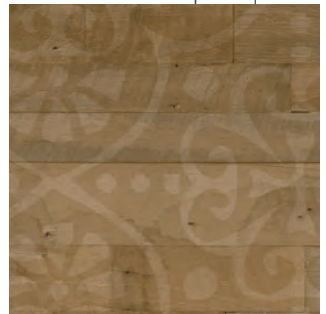
Arapaho | 33W



Payette | 34W



Ocala | 35W

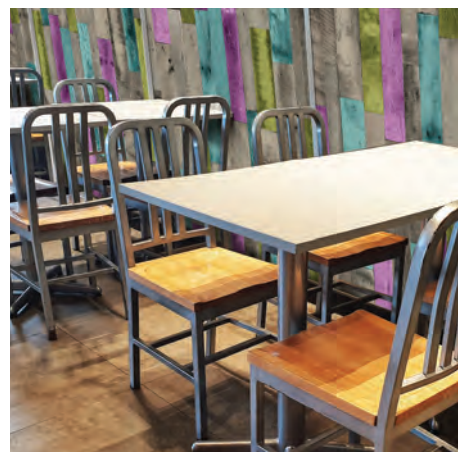


Sawtooth | 36W

MINIMUM ORDER QUANTITIES AND OTHER TERMS MAY APPLY.  
PLEASE CONTACT [SALES@CRANECOMPOSITES.COM](mailto:SALES@CRANECOMPOSITES.COM) FOR ADDITIONAL INFORMATION

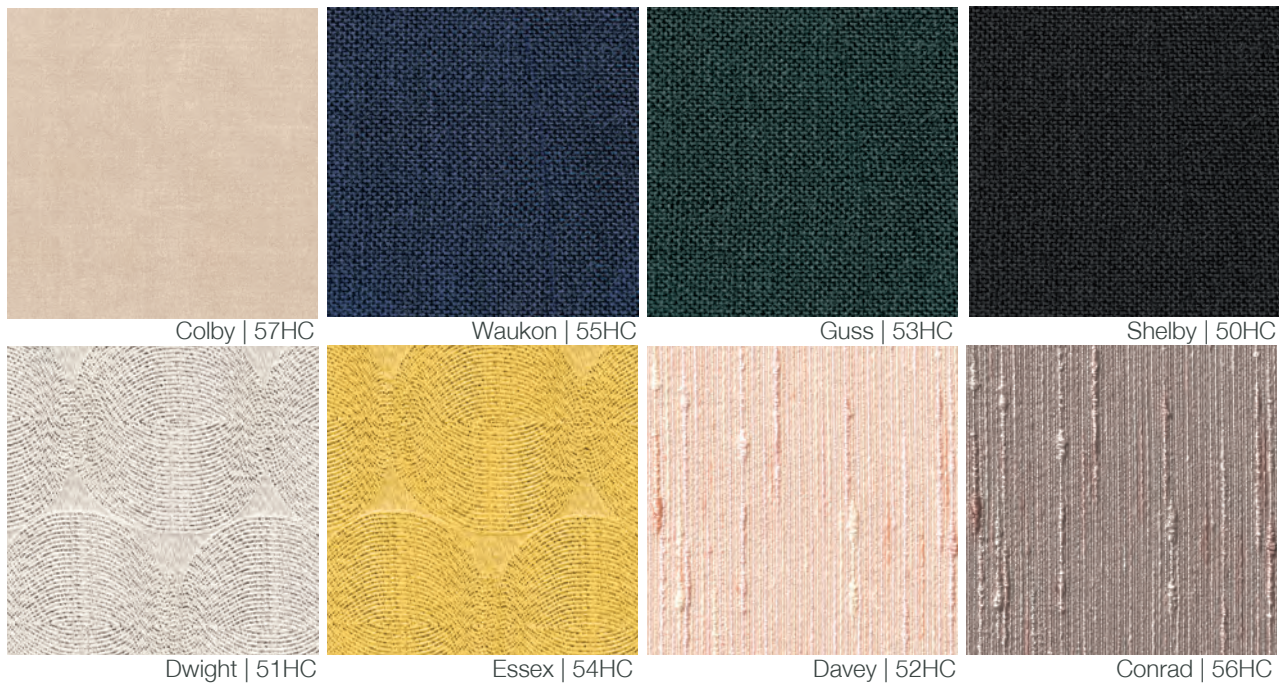
IMAGES ARE BASED ON A 2'X2' EXAMPLE - FULL PANELS MAY HAVE SLIGHT DIFFERENCES IN PATTERN AND HUE  
IN ORDER TO PORTRAY A REALISTIC MATERIAL VIEW.

DUE TO LIMITATIONS OF THE PRINTING PROCESS, PATTERNS AND COLORS MAY VARY. THEY ARE A REPRESENTATION  
OF THE PRODUCT. PLEASE OBTAIN A SAMPLE BEFORE MAKING A FINAL SELECTION AT [FRPSAMPLES.COM](http://FRPSAMPLES.COM)





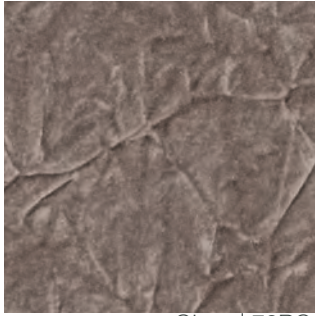
# The Heartland Collection



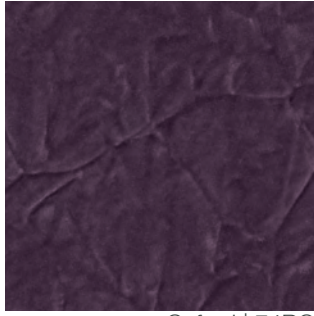


# The Runway Collection

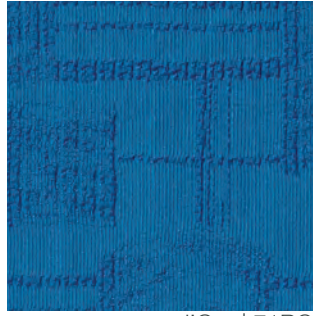
## DESIGNS



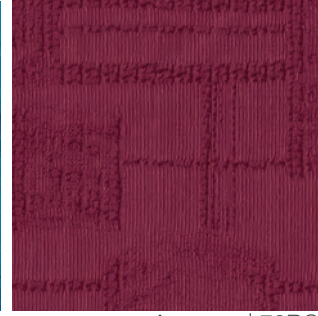
Ginza | 70RC



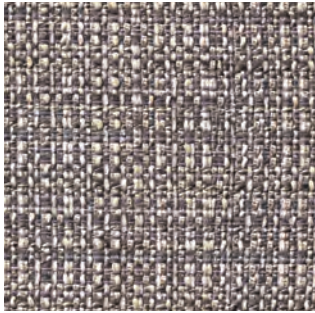
Oxford | 74RC



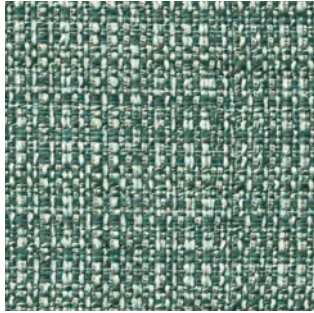
d'Oro | 71RC



Avenues | 72RC



Gracia | 76RC



Garment | 73RC



Palermo | 75RC



Champs | 77RC

MINIMUM ORDER QUANTITIES AND OTHER TERMS MAY APPLY.  
PLEASE CONTACT [SALES@CRANECOMPOSITES.COM](mailto:SALES@CRANECOMPOSITES.COM) FOR ADDITIONAL INFORMATION

IMAGES ARE BASED ON A 2'X2' EXAMPLE - FULL PANELS MAY HAVE SLIGHT DIFFERENCES IN PATTERN AND HUE  
IN ORDER TO PORTRAY A REALISTIC MATERIAL VIEW.

DUE TO LIMITATIONS OF THE PRINTING PROCESS, PATTERNS AND COLORS MAY VARY. THEY ARE A REPRESENTATION  
OF THE PRODUCT. PLEASE OBTAIN A SAMPLE BEFORE MAKING A FINAL SELECTION AT [FRPSAMPLES.COM](http://FRPSAMPLES.COM)

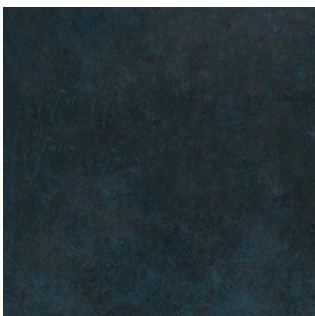




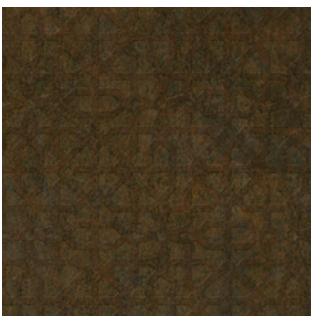
# The City Works Collection



Burlington | 90CW  
representative of full panel design



LaSalle | 91CW



Staten | 92CW



Skyway | 93CW



Union | 94CW



Colfax | 95CW



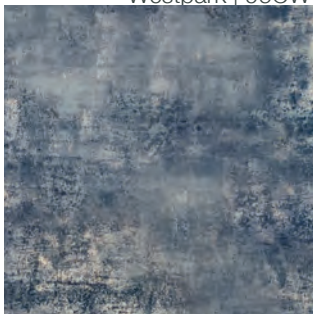
Westpark | 96CW



Sumner | 97CW



Franklin | 98CW

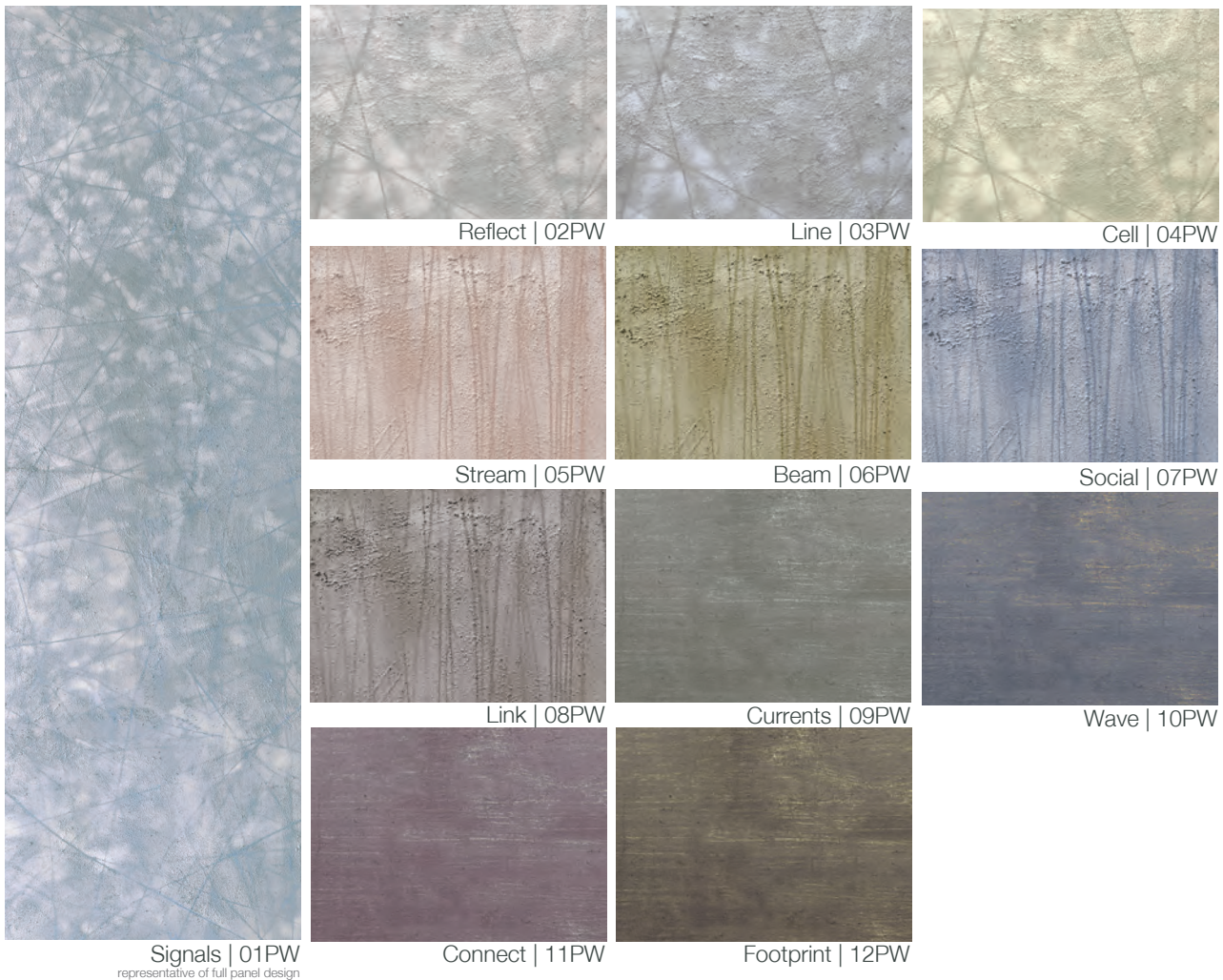


Mover | 99CW





# The Pathways Collection



MINIMUM ORDER QUANTITIES AND OTHER TERMS MAY APPLY.  
PLEASE CONTACT [SALES@CRANECOMPOSITES.COM](mailto:SALES@CRANECOMPOSITES.COM) FOR ADDITIONAL INFORMATION

IMAGES ARE BASED ON A 2'X2' EXAMPLE - FULL PANELS MAY HAVE SLIGHT DIFFERENCES IN PATTERN AND HUE  
IN ORDER TO PORTRAY A REALISTIC MATERIAL VIEW.

DUE TO LIMITATIONS OF THE PRINTING PROCESS, PATTERNS AND COLORS MAY VARY. THEY ARE A REPRESENTATION  
OF THE PRODUCT. PLEASE OBTAIN A SAMPLE BEFORE MAKING A FINAL SELECTION AT [FRPSAMPLES.COM](http://FRPSAMPLES.COM)



## DESIGNS custom program



Imagine your artwork on a wall. Crane Composites brings your concept to reality with vibrant breathtaking details.

Ask for alterations to one of our existing patterns or create your own unique design. Give life to your custom look in any arrangement you choose including logos, artwork, or corporate identity with vibrant high-resolution imagery (up to 600 DPI). The choices are endless with exceptional image quality and color accuracy of our scratch resistant coated digital imaging.

We made the customization process simple, ensuring you have the product you need, when you need it. Submit any visual sample available and our team will help your vision become reality. Perfect for jobs large and small, Crane can deliver within tight timelines and lower installed costs than custom-printed HPL or vinyl wall coverings.

DESIGNS offers the ultimate custom wall protection with low minimums and short lead times. Complete your wall assembly with Crane's contemporary aluminum moldings or custom imaged trims to match.

## BRING YOUR CONCEPT TO REALITY

### PHOTOGRAPHY

Utilize high resolution photography for stunning interior walls. At the University of Michigan Crisler Center, various athletic event photographs were printed in the iconic Michigan blue color.



### BRANDING

Easily add your logo to an existing pattern, solid color, or image. The Revolving Kitchen in Dallas, TX added their logo to an open kitchen setting.

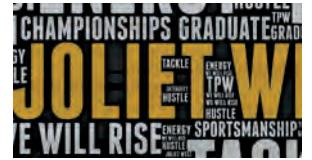




# DESIGNS CUSTOM PROGRAM

## ILLUSTRATIONS

Create your own unique design on a blank canvas for endless options. Joliet West High School in Illinois features a unique word cloud pattern that showcases team spirit in the locker room, while a full wall mural boldly accents the dining room bar at Maple Landing in Dallas, TX - which started as a drawing on a tablet.



## PATTERNS

Crane's imaging capabilities are endless with unique patterns and colors with accurate shadowing. A Midwest deli restaurant created a tile-look pattern on a full FRP panel.

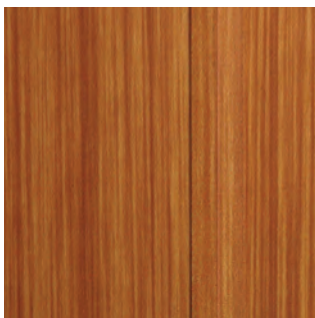


## VARIATIONS

Alter an existing pattern by adding corporate identity to a panel or modifying colors. Barry's Bagels in Troy, MI utilized our DESIGNS Payette from the Forest collection while added their logo and slogan to accentuate the desired brand image.



## Finishing Touches Seam Treatment Accessories



### SILHOUETTE TRIMS

Silhouette Trims offer a narrow profile to minimize the seam. Crane Composites Silhouette Trims feature patterned expansion control guides to assist with proper FRP installation. Available in 10' lengths in Classic collection.



### COLOR SIL COLOR-MATCHED CAULK

Use Color Rite's Color Sil caulk for professional looking panel installations without the use of moldings. Crane has teamed up with Color Rite to provide materials that compliment Crane wall panels in over 40 colors. Use with Color Rite's Pre-Tooling Mist to install with ease.



### Aluminum Trims

Designed for a contrasting and upscale look. Available in 10' lengths in silver color.



[cranecomposites.com](http://cranecomposites.com)

| 1.800.435.0080

| [sales@cranecomposites.com](mailto:sales@cranecomposites.com)