



CRANE Composites



Installation Guide

for Cleanroom Wall
System featuring

GLASBORD®

The Only FRP panel with *Surfaseal* by CRANE Composites

with trim-free seams



WHERE TRADITION & INNOVATION CONVERGE

Topics

General Information	2
Installation Preparation	3
Pre-Installation Planning	5
Basic FRP Installation Steps	5
Cutting Instructions	6
Attaching to Wall	6
Seam Sealant Application	7

Disclaimer

PLEASE READ ALL INSTRUCTIONS BEFORE BEGINNING INSTALLATION

These guidelines are provided in good faith to help prevent installation problems caused by common errors. The manufacturer and/or distributor of the product bears no responsibility for installation actions taken or not taken. There are many nuances of installation that are assumed to be general construction knowledge to an experienced installer; such nuances are not included in these instructions. Rather, these installation guidelines are strictly recommendations and are not intended to serve as a step-by-step, foolproof installation checklist. Selection of an experienced FRP installer is the sole responsibility of the project owner and architect. Crane Composites does not accept any responsibility for job failure resulting from or associated with improper job site environmental conditions.

General Information

Safety Information

WHEN CUTTING OR DRILLING, ALWAYS WEAR PROTECTIVE GLASSES OR GOGGLES AND A FACE MASK WHICH COVERS THE FACE AND MOUTH. Itching due to glass fibers may be avoided by the use of barrier creams on exposed skin areas. Hearing protection is also recommended.

Shelf Life and Storage

GLASBORD PANELS:

Panels should be stored indoors on a solid, flat, dry surface other than the floor. Do not stack on concrete floor or any other surface that emits moisture. Lay panels flat with proper support on the ends of panels. Do not stand panels on edge. Optimum storage conditions are 60°F to 75°F (16°C to 24°C) and 35% to 55% relative humidity (Figure 1).

CCI ADVANCED POLYMER ADHESIVE (R53828) OR FAST GRAB ADHESIVE (R53829):

For best results, maintain temperature of adhesive, panels and room at a stable temperature between 65°F to 75°F (18°C to 24°C) for a 24-hour period prior to, during and after installation. When protected from freezing and when stored in its original, tightly sealed container, adhesive has a shelf life of one year (1 yr.) from the date of manufacture. Refer to page 4 for assistance in selecting the appropriate adhesive.

CCI CLEANROOM / HYGIENIC SEAM SEALANT (R53827):

Sealant should be stored in a dry environment between 65°F to 75°F (18°C to 24°C). New cartridges should be left in their original packaging until ready for use. Partial cartridges can be stored by leaving mixing tip attached to cartridge. Sealant inside the mixing tip will cure and act as a seal after each use. A new mixing tip will need to be installed prior to next use. Refer to expiration date listed on cartridge prior to use or re-use.

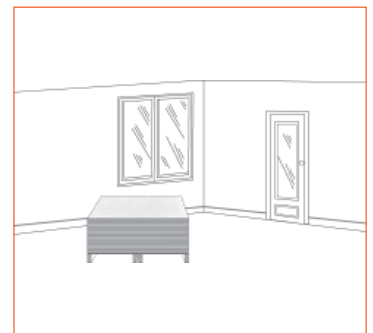


Figure 1

Supplies and Equipment

Supplies will vary depending on wall substrate and adhesive choice

- **Crane Composites Standard FRP**
- **Adhesive** - Crane Advanced Polymer Adhesive (R53829) or Crane Fast Grab Adhesive (R53828)
Refer to page 5 for assistance in selecting the appropriate adhesive
- **Crane Composites Laminate Roller** (Part # R50ROLLER)
- **Crane Composites V-notched Trowel** 3/16" x 1/4" x 5/16" (Part # R50TROWEL)
- **Cleanroom Wall System Seam Sealant** - 7555 Seam Sealant (R53827)
- **Applicator** - Pneumatic Dual Chamber Applicator Gun (R50CAULKGUN)
- **400ml Static Mixing Tips** - 3/8" x 11" x 24 EL
- **Finishing Kit** - Inline Seam and Radial Seam Finishers for seam smoothing (R50SEAM-KIT)
- **Panel Tape** - 1" by 144 yds Red Tape (R53522)
- Circular saw with fine tooth carbide tipped saw blade
- Swivel-head 18 gauge shears
- Drywall Roto-Zip®
- Jig-Saw
- Flat edge finishing tool (putty knife or equivalent)
- Soap and water for clean-up (Latex or Polymer adhesives)
- Saw horses
- Plywood larger than panels
- Dry, lint free rags
- Sandpaper or Paper Tiger® Wallpaper Removal Tool for roughing up wall
- Tape measure
- Utility knife
- Six-penny nails
- **IMPORTANT NOTE:** If installation room has high humidity (65% or higher) then a portable low-cost dehumidifier unit is suggested (for Crane Fast Grab Adhesive only).
- Solvent for clean-up (IPA, acetone)
- Protective gloves needed when using seam sealant

Installation Preparation

Pre-Conditioning

Before beginning the installation, the installer must determine that the environment of the jobsite meets or exceeds all requirements specified in the installation guide. Prior to installing, remove the packaging and allow the panels to acclimate to the room temperature and humidity for 24 hours. Acclimation temperature range should be 60°F to 75°F (16°C to 24°C) and relative humidity should be 35% to 55%. Ideally, both the room temperature and humidity during acclimation and installation should be the same as the final operating conditions.

Installation Conditions

Installation should not begin until building is enclosed (windows and doors are installed), permanent heating and cooling equipment is in operation, and residual moisture from plaster, concrete, or terrazzo work has dissipated. Installation temperature range should be 60°F to 75°F (16°C to 24°C) and relative humidity range should be 35% to 55%.

Wall Preparation

Every attempt is made to inspect panels for cosmetic and physical abnormalities prior to shipment, however, all panels should be inspected for any defects prior to installation. The installer assumes all responsibility for full inspection of product before installation. **If panels are not acceptable, contact your Customer Service Representative (CSR) immediately.** Do not install panels of unacceptable or questionable quality. Crane Composites, Inc. will not be responsible for installation or removal costs of unacceptable panels. Walls should be flat and even. Remove high spots and fill in low spots prior to beginning installation. Remove any foreign matter that may interfere with the adhesive bond. The wall substrate must be dry and free from dirt, dust, and grease. Installation over uneven surfaces will result in little or no adhesion to the wall substrate, therefore bubbling due to air pockets will form behind the panel.

PAINTED OR PRIMED SURFACES

Painted surfaces will not allow water-based adhesives to dry. Consequently, they will not achieve full bond strength. Painted surfaces must be perforated with a wallpaper removal tool to rough up the wall. If you do not have that tool available, surfaces must be gouged with a minimum 20 grit heavy sandpaper to break the moisture barrier of the paint. All loose paint, dirt and residue must be removed prior to installation. Refer to page 4 for assistance in selecting the appropriate adhesive.

NEW GYPSUM BOARD OR DRYWALL

New gypsum should not be painted or primed. Tapered joints need only a fill and taped coating using a setting joint compound. A finish coat is not necessary or desirable. Any extremely uneven areas should be filled. Remove all drywall dust.

PLYWOOD

Plywood walls must be flat and even, and warped plywood should be removed and replaced. Solvent-Free adhesive cannot be used on any installation over pressure treated or fire-rated plywood.

CONCRETE BLOCK AND BRICK

Concrete block and brick wall surfaces are by nature uneven, and FRP panels installed directly to these surfaces will likely develop loose spots, bulges and buckles. An alternate method is to install gypsum board, cement board or another appropriate substrate over the furring and then install FRP panels according to the standard installation instructions. If it is the owner or contractor's preference to install FRP panels directly to a concrete block or brick wall, it is recommended that the panels be installed with Crane Advanced Polymer Adhesive.

NON-POROUS SURFACES

Non-porous surfaces (i.e., ceramic tile, glazed block, moisture resistant substrates, and metal panels) do not provide a good surface for adhesive bonding. General-purpose latex-based, polymer or solvent-based adhesives will not dry properly on a non-porous surface. Advanced polymer is recommended in these applications. Contact an adhesive manufacturer for additional recommendations.

Environmental Considerations

The following special conditions require additional preparation or installation techniques:

DIRECT SUNLIGHT

Prolonged Direct Sunlight on panels may cause abnormal fading and/or rapid expansion depending upon amount of heat buildup. Use caution in these areas.

HIGH HUMIDITY ROOMS

Acclimate panels in the operating humidity conditions. Carefully follow the guidelines in this installation guide for expansion/contraction spacing and sealing. (see Expansion Joint Chart, pg 6). Failure to seal moisture entry points with sealant can cause swelling of the substrate resulting in warping, curling, delamination or bond line separation. Use an adhesive that is recommended for high humidity conditions. A vapor barrier (e.g. 6 mil poly sheet) may be required. Follow the architect or owner's specifications or check your local building codes for specific requirements.

LOW TEMPERATURE CONDITIONS

Acclimate panels in the operating temperature conditions. Carefully follow the guidelines in this installation guide for expansion/contraction spacing and sealing (see Expansion Joint Chart, pg 6). Use an adhesive that is recommended for low temperature conditions. A vapor barrier (e.g., 6 mil poly sheet) may be required. Follow the architect or owner's specifications or check your local building codes for specific requirements.

FOAM INSULATION

An approved thermal barrier system (e.g., gypsum board) must be used between the FRP panels and any foam insulation (Figure 2). Check your local building codes for specific requirements.

NEAR HEAT SOURCE

FRP panels will discolor when installed behind or near a heat source which radiates temperatures exceeding 130°F (55°C), such as cookers, ovens, and deep fryers. Stainless steel is recommended for these types of areas.

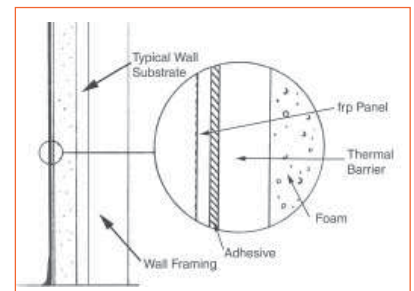


Figure 2

Choose an Adhesive

The following information provides assistance on selecting the appropriate adhesive for installation:

CRANE ADVANCED POLYMER ADHESIVE

Porous and most non-porous substrates, Interior and exterior applications, Fiberglass faced, mold resistant and firecode core drywall, drywall, steel, foamboard, vinyl, PVC, FRP, ceramic tile, laminate, sealed and unsealed concrete

CRANE FAST GRAB ADHESIVE

Porous substrates, Interior drywall applications, Non-treated plywood

ADHESIVE RECOMMENDATIONS FOR VARIOUS SUBSTRATES

FRP to:	Advanced Polymer	Fast Grab
Standard unpainted drywall	YES	YES
Standard unpainted plywood	YES	YES
Treated plywood	YES	NO
Fire rated plywood	YES	NO
Cement board	YES	NO
Fiberglass faced, mold resistant and firecode core drywall	YES	NO
DensGlass	YES	NO
FRP	YES	NO
Traditional Greenboard	YES	NO
Ceramic tile	YES	NO

FRP to:	Advanced Polymer	Fast Grab
Stainless steel	YES	NO
Metal	YES	NO
Aluminum	YES	NO
Galvanized metal	YES	NO
Concrete block (above grade or inside wall)	YES	NO
Concrete block (below grade or outside wall)	YES	NO
Painted walls (if paint is well anchored)	YES	NO
Polystyrene foam	YES	NO
Polyurethane foam	YES	NO
Foil-faced insulation	YES	NO

Refer to form #7657 for additional Crane Adhesive installation information.

Pre-Installation Planning

- Pre-fit each panel before fastening and/or adhering in place.
- All cutting and drilling should be done prior to the application of adhesive.
- Preplan for cove or base molding. FRP panels should be installed so that the base molding will not restrict normal panel movement during expansion and contraction. Cut panels 1/4" short of where the base molding will extend; poured acrylic floor with built-in base cove should be in place prior to installation.
- When using mechanical fasteners, pre-drill holes in the panels using a drill bit that is 1/4" larger than the mechanical fasteners. Plan ahead so that fasteners will not interfere with wall fixtures.
- When using mechanical fasteners through FRP to attach wall fixtures, pre-drill holes using a drill bit that is 1/4" larger than the mechanical fastener. Without oversizing the holes, the FRP will likely have bulges and/or buckles when panel movement occurs during expansion and contraction.

Basic FRP Installation Steps

1. Trim panel to fit. Oversize pilot holes if drop-in ceiling wall angle is attached to and through FRP (please allow for proper expansion and contraction)
2. Radius corners of any cut out fixture openings.
3. Apply adhesive to 100% of the backside of panel using a cross-hatch pattern using a trowel recommended by the adhesive manufacturer.
4. Place panel on wall, leaving appropriate room at panel joints and corners for expansion and contraction.
5. Using a laminate roller, remove air pockets by rolling down and out toward the panel edge without a molding.
6. Install next panel.

The nature of FRP panels is to expand and contract. Without leaving required room for expansion and contraction, FRP panels can develop buckles and/or bulges because panel movement will occur.

Cutting Instructions

POSITION PANEL FACE DOWN ON A COVERED WORK AREA

When cutting with a circular saw, position the panel so that the saw blade enters the back side of panel first to avoid chipping or damage. (Figure 3)

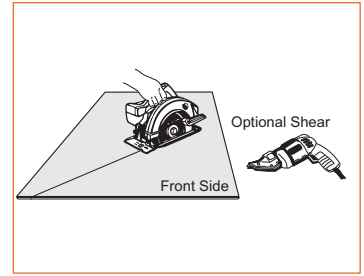


Figure 3

Radius Corners of Cut-Outs

CUT-OUTS

The inside corners of all cut-outs must have a radius of at least 1/8" (3.2 mm). Failure to radius corners may result in stress cracking. For pilot holes, a 1/4" (6.36 mm) diameter router bit or drill bit may be used, use a jig saw to complete the radius cut out. Allow 1/8" (3.2 mm) clearance around all fixtures, electric boxes, piping, etc.

EXPANSION JOINT CHART

PANEL SIZE	4' x 8',9'	4' x 10',12'
Gap between panels and wall fixtures	1/8"	1/4"

Attaching to Wall

Applying Adhesive

When adhesive is used, be sure that it is an FRP-formulated product. FRP adhesives are widely available. Follow the adhesive manufacturer's recommendations for trowel style (e.g., appropriate height of adhesive bead left by trowel). It is important to apply adhesive carefully and follow all directions to prevent problems that may result from using too little or too much adhesive. 100% adhesive coverage applied to the entire back of the panel is recommended by using a "crosshatch" pattern. Adhesive should extend to all edges of the panel and should be applied directly to the back of each individual FRP panel. (Figure 4)

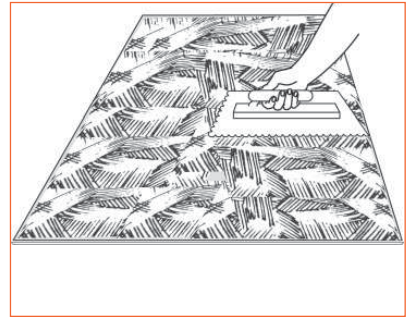


Figure 4

Do not apply adhesive to wall.

Spacing

All FRP panels have expansion characteristics due to changes in humidity and temperature that must be accounted for during installation with proper spacing around panel edges and around fixtures attached to the panel/wall. Adequate space must be allowed for panel expansion and contraction. For a 4' x 8' panel, a minimum gap of 1/4" is required at the top and bottom of each panel and 1/8" between panels. More room will be required for longer panels. It is recommended that panels do not exceed 48" in width and 12' in length to aid in ease of installation and ensure a satisfactory finished installation. See the FRP panel Expansion Joint Chart for appropriate spacing at ceiling, floor and between panels.

EXPANSION JOINT CHART

PANEL SIZE	4' x 8',9'	4' x 10',12'
Gap at ceiling	1/4"	3/8"
Gap at floor	1/4"	3/8"
Gap between panels at the inside corner	1/4"	3/8"
Gap between panels at the center lines	1/8"	1/4"

Panel and Seam Sealant Sequence

All panels are installed prior to the seam treatment. Before sealant can be applied, installed panels need to be adhered for at least 6 hours.

Panel Installation Finish

- Use a laminate roller to ensure all air pockets are removed between the panel and the wall and to ensure a good bond between the panel and the wall. Start in the top corner of the panel away from the leading edge. Begin rolling down and out towards the panel edge.
- Adhesive residue may make panels appear stained and will collect dirt. Remove any adhesive residue upon completion of the job. To remove latex-based adhesive, clean with a non-abrasive cotton cloth and warm water. If necessary, use a mild, non-abrasive detergent. For best results, change water and cleaning rags frequently. For clean-up with solvent based adhesives, use mineral spirits or acetone to remove residue.

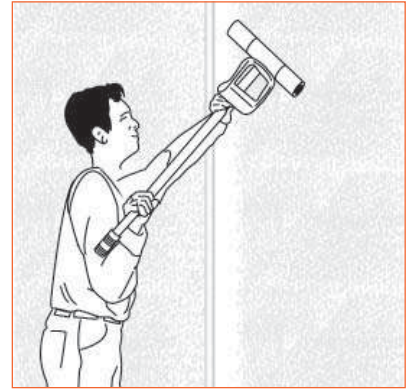


Figure 5

Seam Sealant Application

Wall Preparation

1. Surfaces should be free of grease, dirt, and other contaminants. Clean seams as necessary with a dry, lint free rag or a rag dampened with solvent if necessary.
2. Installed panels need to be adhered to the wall for at least 6 hours before beginning seam treatment.
3. Remove any adhesive between the panels with a sharp edged screwdriver or small flat blade (Figure 12).
4. Prior to dispensing sealant, each seam will need to receive painter's tape on each side of the seam. Tape needs to be applied as close to the panel edge as possible without going over into the seam. If panel has a pre-applied tack film, that can be left in place (Figure 16).



Figure 12: Remove excess adhesive

Preparation of a New Cartridge

1. Loading the cartridge into the dispensing gun
 - A. Remove the plastic nut from the outlet end of the sealant cartridge.
 - B. Remove the metal retaining clip and the plastic plug in the outlet ports of the cartridge and discard (re-insertion of the plugs into the wrong side can cause sealant to cure and block the ports).
 - C. Load cartridge into dispensing gun ensuring that the plungers are lined up properly.
2. Leveling the plungers (Figure 13)
 - A. To ensure that the sealant is mixed and dispensed at the proper ratio, the plungers need to be level at the start of each new cartridge prior to use.
 - B. Prior to installing the mixing tip, slowly advance the plungers until a small amount of material is equally dispensed from each port. Once this occurs, the plungers are level.
 - C. Hand mix the dispensed material and discard.
3. Attach Mixing Tip and Purge (Figure 14)
 - A. After leveling the plungers, fit the plastic mixing tip onto the outlet end of the cartridge and secure with the plastic nut that was removed previously.
 - B. After mixing tip has been secured, dispense a small bead of material (approximately one tip length) to ensure that a proper mix ratio is being achieved.
 - C. Material is now ready for use.
4. Open Time
 - A. Open time is the amount of time from when the sealant begins to travel down the mixing tip until dispensed product needs to be completely worked/processed in the seam.
 - B. It is important to note that open time begins at initial mix, not at time of dispense onto the surface of the application.
 - C. For sealant, the approximate open time is 3-5 minutes at 75°F (24°C). This means that at an ambient temperature of 75°F (24°C), the material applied to the seams of the wall panel must be worked/processed within 3 minutes of the initial purge through the mixing tip.
 - D. Open time will fluctuate as temperature increases or decreases. It can be estimated that for every 18°F (10°C) increase in temperature, the open time will be cut in half.
 - E. Operators will also need to be aware of the timing in regards to the material remaining in the mixing tip after each application. Material will either need to be purged (approximately every 2-3 minutes at 75°F) between uses or a new mixing tip applied at the re-start of a partial cartridge. Temperature fluctuations described above have same effect on purge time.



Figure 16: Applying the painter tape



Figure 13: Leveling the Plungers



Figure 14: Attach Static Mixing Tip

Seam Sealant Workability Time

1/8" - 3/16" Bead

		Temperature (°F)			
		70	80	90	100
Time (Minutes)	1	Workable	Workable	Workable	Workable
	2	Workable	Workable	Workable	Workable
	3	Workable	Workable	Workable	Suspect
	4	Workable	Workable	Suspect	Not Workable
	5	Workable	Suspect	Not Workable	Not Workable
	6	Suspect	Not Workable	Not Workable	Not Workable
	7	Suspect	Not Workable	Not Workable	Not Workable
	8	Not Workable	Not Workable	Not Workable	Not Workable
	9	Not Workable	Not Workable	Not Workable	Not Workable
	10	Not Workable	Not Workable	Not Workable	Not Workable

Workable
Suspect
Not Workable

IMPORTANT INSTALLATION NOTE

Seam Sealant workability begins at initial dispense

Apply Sealant to Seams/Joints

General Process notes:

- The number of operators to be used for the seam seal application process is at the end user's discretion. A minimum of two operators is recommended.
- If one operator is used, then each seam will have to be processed individually (filled and then smoothed by the same operator before moving on to the next seam). A new mixing tip will likely need to be used for each seam in this case.
- For multiple operators (two or more), the end user may design the process such that one operator can dispense, while a second operator can follow and smooth the joints. Care will need to be taken to ensure that the open time of the material is not exceeded in these scenarios.
- Seam Seal Process order should be:
 - Vertical flat panel seams
 - Vertical inside corners
 - Floor and/or ceiling joints
 - Windows and door frames

Vertical Flat Panel Seams

Pneumatic Applicator Gun

- Vertical Seams should be processed first as they are intended to be smoothed flat with the panel. Inside corners, floor, and ceiling joints are smoothed such that the seam sealer stands proud of the surface, which would require placement over any vertical seams that may interface with these joints.
- Material should be dispensed into each seam at a rate such that the seam is completely filled with sealant within the necessary open time for the sealant.
- Ensure that there is enough sealant in the cartridge to complete a full seam. Performing a cartridge change in the middle of a seam application could increase the risk of exceeding the open time of the sealant (Figure 17).
- If the seam has a large gap and/or cannot be filled by the sealant in one pass. A mechanical filler, such as weather-strip putty, may also be used to fill large gaps prior to the application of the seam sealant.
- Smoothing the sealant
 - After the sealant has been dispensed, smooth the sealant beads flush with the panel surface using the Inline Seam Finisher.
 - Finishing/smoothing tools and techniques are at the discretion of the operator and/or the end user.
 - Smoothing of the sealant must occur within the open time of the sealant.
 - Once an entire seam is completed, remove the vertical tapes, pulling back and away from the seam. Remove any excess sealant on panels using a solvent dampened rag.



Figure 17: Applying the painter tape horizontal in 3' sections



Figure 18: Removing excess sealant



Figure 19: Bump adhesive in to previous section



Figure 20: Removing Painter's tape

Manual Applicator Gun

1. 1. When a manual gun is used, it is recommended that sealant is installed in sections. Section length will vary dependent on environmental conditions at job site. As a rule of thumb, working in 3' sections by placing a small horizontal piece of painters tape every 3' along the length of the seam is recommended. When dispensing bead during application work from top to bottom of seam.
2. FOLLOW PNEUMATIC steps 2 through 5C.
3. As soon as the smoothing of a 3' section is complete, remove both the horizontal and vertical 3' section of painter tape before starting the next 3' section of vertical seam. When starting the next section of vertical seam a good technique to follow is to apply the sealant below the previous completed section and "bump up" the sealant into that section (Figure 19). Once the entire seam is completed remove any excess sealant on panels using a solvent dampened rag.

Vertical Inside Corners

1. Repeat process listed in Vertical Flat Panel Seams except for the format to smooth the sealant
2. Smoothing the Sealant
 - A. After the sealant has been dispensed, smooth the sealant beads flush with the panel surface using the Radial Seam Finisher if a rounded corner joint is desired.
 - B. Finishing/smoothing tools and techniques to be at the discretion of the operator and/or the end user.
 - C. Smoothing of the sealant must occur within the open time of the sealant.
 - D. Once an entire seam is completed, remove the vertical tapes, pulling back and away from the seam. Remove any excess sealant on panels using a solvent dampened rag.



Figure 21: Using Radial Seam Finisher for rounder corner joint

Horizontal Floor and Ceiling Joints

1. Material should be dispensed into each seam at a rate such that the seam is completely filled with sealant but completed within the necessary open time for the sealant.
2. It is recommended to pull dispensing gun away from bead during application.
3. Ensure vertical seams are cured prior to processing horizontal seams.
4. It is also recommended that operators ensure that there is enough sealant in the cartridge to complete a full seam. Performing a cartridge change in the middle of a seam application could increase the risk of exceeding the open time of the sealant.
5. If the seam has a large gap and/or cannot be filled by the sealant in one pass, an initial "filler bead" can be applied and then a secondary bead can be applied over the top of the initial bead after the initial bead has reached full cure. Mechanical filler, such as weather-strip putty, may also be used to fill large gaps prior to the application of the sealant.
6. Smoothing the Sealant:
 - A. After the sealant has been dispensed, smooth the sealant beads flush with the panel surface using the radial seam finisher if a rounded corner joint is desired.
 - B. The inline seam finisher can also be used if a flat inside corner bead is desired.
 - C. Finishing tools and techniques to be at the discretion of the operator and/or the end user.
 - D. Smoothing of the sealant must occur within the open time of the sealant.
 - E. Once an entire seam is completed, remove the vertical tapes, pulling back and away from the seam. Remove any excess sealant on panels using a solvent dampened rag.



Figure 22: Horizontal seam filled completely with sealant



Figure 23: Horizontal finish with rounded corner

Seams Around Doors and Window Frames and Other Special Application Areas

1. Repeat process listed in Vertical Inside Corners.
2. Material should be dispensed into each seam at a rate such that the seam is completely filled with sealant but completed within the necessary open time for the sealant. As these seams typically have a larger gap, they may not be able to be filled by the sealant in one pass. A mechanical filler, such as weather-strip putty, may also be used to fill large gaps prior to the application of the sealant.
3. Smoothing the Sealant
 - A. After the sealant has been dispensed, smooth the sealant beads flush with the panel surface. Since these joints are larger and often have an irregular shape, it is at the discretion of the installer to determine the best method for smoothing the joint. A combination of common smoothing tools may be required. (Inline seam finisher should be used for small in-line panel seams or larger radial seam finisher used for corners.)
 - B. Smoothing of the sealant must occur within the open time of the sealant.
 - C. Once an entire seam is completed, remove the vertical tapes, pulling back and away from the seam. Remove any excess sealant on panels using a solvent dampened rag.



Figure 24: Typical Window Seam Application

Seam Sealant Cleaning

Clean equipment and tools prior to the sealant cure with organic solvents such as isopropyl alcohol.

AN IMPORTANT NOTE ABOUT MOISTURE RESISTANT SUBSTRATES

MOISTURE-RESISTANT GYPSUM VARIES TREMENDOUSLY, WHILE SOME OF THESE NEW SURFACES ALLOW MOISTURE TO PENETRATE, OTHERS RETARD OR TOTALLY PREVENT PENETRATION OF WATER OR SOLVENT. TESTING BY CRANE COMPOSITES INDICATED THAT WHEN WATER BASED OR SOLVENT BASED FRP ADHESIVES ARE USED IN CONJUNCTION WITH MOISTURE RESISTANT GYPSUM THE ADHESIVE ABILITY TO CURE IS SEVERELY COMPROMISED IN THE CRUCIAL FIRST 24 HOURS OF INSTALLATION AND THE POTENTIAL FOR A SUCCESSFUL INSTALLATION IS GREATLY DIMINISHED. THE CONSTRUCTION TRADE IS BECOMING EXPOSED TO AN INCREASINGLY LARGE NUMBER OF NEW TYPES OF MOISTURE RESISTANT GYPSUM FROM THE DRYWALL INDUSTRY. GIVEN THESE TWO FACTS, IT IS RECOMMENDED THAT YOU CONTACT YOUR ADHESIVE MANUFACTURER'S TECHNICAL SUPPORT DEPARTMENT, PRIOR TO ANY FRP INSTALLATION OVER WALL SUBSTRATES OTHER THAN STANDARD GYPSUM.

STANDARD GYPSUM IS CRANE COMPOSITES PREFERRED SUBSTRATE CHOICE WHEN INSTALLING FRP WALL PANELS. FRP OFFERS RESISTANCE TO MOLD, MILDEW, AND BACTERIA GROWTH AND HAS A HIGH IMPACT STRENGTH, HIGH MOISTURE RESISTANCE, CHEMICAL RESISTANCE AND STAIN RESISTANCE. A MOISTURE RESISTANT SUBSTRATE MAY NOT BE NECESSARY WHEN AN FRP FINISH IS SPECIFIED. HOWEVER, SHOULD A MOISTURE-RESISTANT GYPSUM BE REQUIRED PLEASE CONTACT ADHESIVE SUPPLIER TO REVIEW THE PROPOSED SUBSTRATE AND OBTAIN A RECOMMENDATION ON APPROPRIATE ADHESIVE FOR THAT TYPE OF SUBSTRATE SURFACE PRIOR TO INSTALLATION.

CRANE COMPOSITES WILL NOT BE RESPONSIBLE FOR FAILED INSTALLATIONS DUE TO LACK OF ADHESIVE BOND STRENGTH BETWEEN THE ADHESIVE AND THE SUBSTRATE.

**FOR QUESTIONS OR CONCERNS, PLEASE DO NOT HESITATE TO CONTACT:
CRANE COMPOSITES CUSTOMER SERVICE DEPARTMENT
1.800.435.0080**

FLAME SPREAD AND SMOKE DEVELOPMENT RATINGS

The numerical flame spread and smoke development ratings are not intended to reflect alleged hazards presented by Crane Composites products under actual fire conditions and this product has not been tested by Crane Composites except as set forth below. These ratings are determined by small-scale tests conducted by Underwriters Laboratories and other independent testing facilities using the American Society for Testing and Materials E-84 test standard (commonly referred to as the "Tunnel Test").

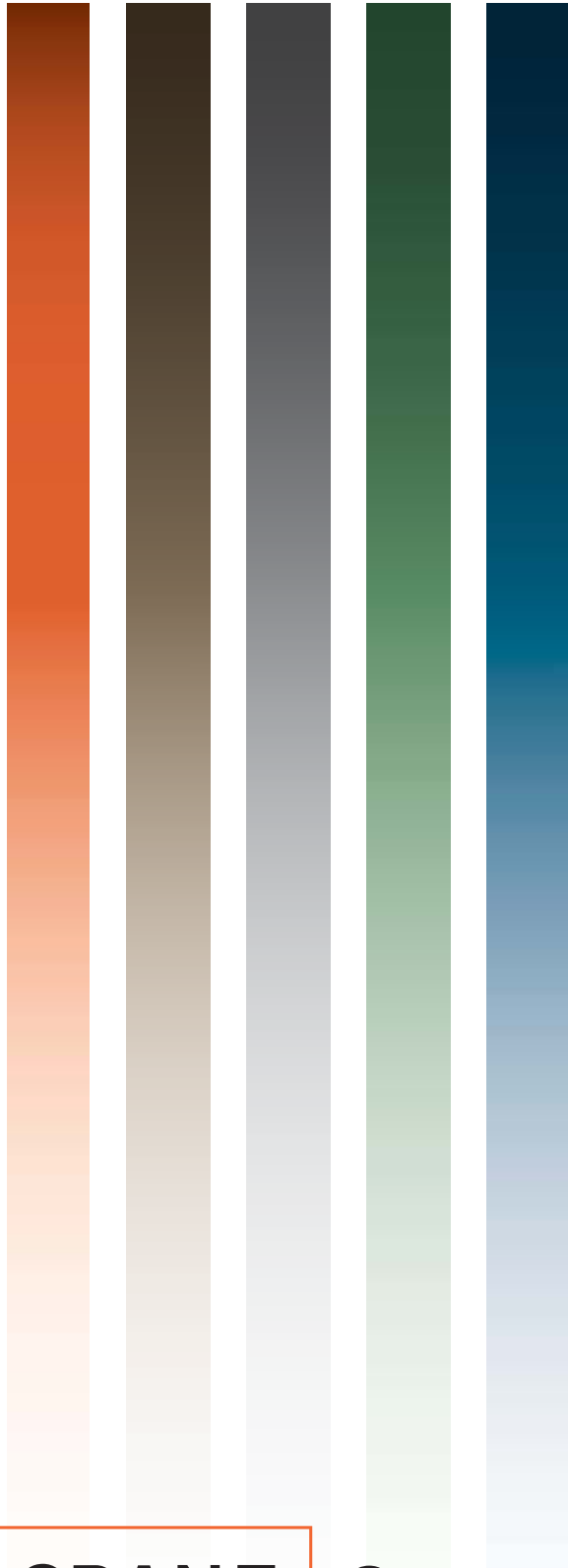
CRANE COMPOSITES PROVIDES THESE RATINGS FOR MATERIAL COMPARISON PURPOSES ONLY. Like other organic building materials (e.g. wood), panels made of fiberglass reinforced plastic resins will burn. When ignited, FRP may produce dense smoke very rapidly. All smoke is toxic. Fire safety requires proper design of facilities and fire suppression systems, as well as precautions during construction and occupancy. Local codes, insurance requirements and any special needs of the product user will determine the correct fire-rated interior finish and fire suppression system necessary for a specific installation. We believe all information given is accurate, without a guarantee. Since conditions of use are beyond our control, all risks are assumed by the user. Nothing herein shall be construed as a recommendation for uses which infringe on valid patents or as extending a license under valid patents. www.astm.org/Standards/E84.htm.

Crane Composites, Kemlite, Glasbord, Fire-X Glasbord, Surfaseal, Sanigrad, Kemply and Translucent Plastic Thread with Fluorescent Pigment Design are Registered Trademarks of Crane Composites, Inc.

The GREENGUARD Indoor Air Quality Certified Mark is a registered certification mark used under license through the GREENGUARD Environmental Institute.

PaperTiger is a registered trademark of PaperTiger Ltd., Roto-Zip is a registered trademark of RotoZip Tool Corporation, 3M and VHB are trademarks of 3M Company.

Crane Composites is the manufacturer of Glasbord, Sequentia, Sanigrad II and a variety of other fiberglass reinforced plastic (FRP) composite wall panels. Inspired by the Kemlite tradition, Crane Composites has over 55 years of experience in commercial building products and is a recognized industry leader in FRP applications.



CRANE

Composites

www.CleanroomWallPanels.com | 1.800.435.0080
salesbp@cranecomposites.com