

SEQUENTIA® + VARIETEX® WALL PANELS | TRANSLUCENT CORRUGATED PANELS





## Sequentia<sup>®</sup> wall panels



SEQUENTIA EMBOSSED WALL PANELS | WHITE (1130)

### traditional wall panels

Sequentia FRP wall and ceiling panels are durable, cleanable and easy to install. Panels are available in a Class A or Class C fire rating per ASTM E-84. Sequentia traditional FRP panels are ideal for areas where a cleanable and sanitary finish is essential.

## product specs

### AVAILABLE SIZES:

4' x 8' | 4' x 10'

### THICKNESSES:

0.09" (embossed) | 0.075" (smooth)

### FIRE RATINGS:\*\*

Class A per ASTM E-84 | Class C per ASTM E-84

**\*\* embossed black in a Class C fire rating only**

### SEQUENTIA LAMINATED PRODUCT SPECS:

Available Sizes

- Wall Sizes: 4' x 8' | 4' x 10'
- Ceiling Sizes: 23.75" x 23.75" | 23.75" x 47.75"

Available Substrates:

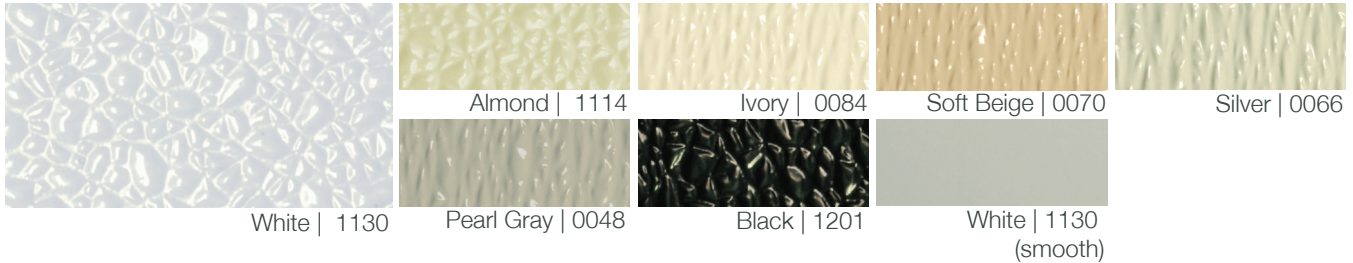
- Gypsum 1/2" | 5/8"
- Plywood 3/8" | 1/2" | 5/8" | 3/4"
- Oriented Strand Board 3/8" | 1/2" | 5/8"
- Fluted Polypropylene 0.32" | 0.40"
- Double-Sided ACP Core 0.12" | 0.24"

### APPLICATIONS:

- Commercial Kitchens
- Restrooms
- Convenience Stores
- Locker Rooms
- Food Processing Plants

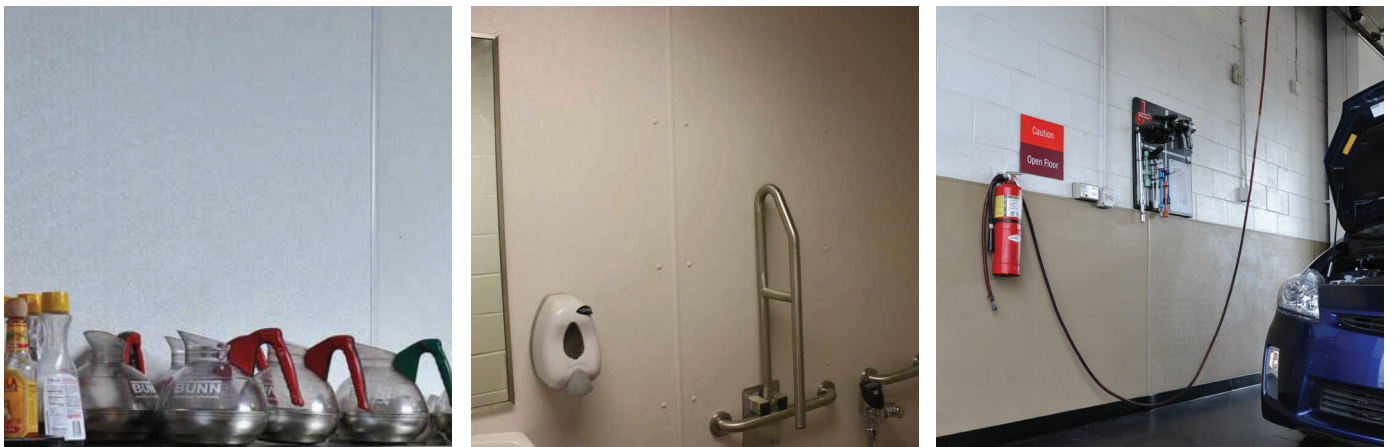
### FEATURES:

- Mold + Mildew Free
- Meets USDA/FSIS Requirements
- Easy to Install
- Cleanable
- Durable



MINIMUM ORDER QUANTITIES AND OTHER TERMS MAY APPLY.

DUE TO LIMITATIONS OF THE PRINTING PROCESS, PATTERNS AND COLORS MAY VARY. THEY ARE A REPRESENTATION OF THE PRODUCT. PLEASE OBTAIN A SAMPLE BEFORE MAKING A FINAL SELECTION AT [FRPSAMPLES.COM](http://FRPSAMPLES.COM)





## Varietex® innovative textured + colored wall panels



VARIETEX SANDSTONE WALL PANELS | MORNING MIST GRAY (636)

### warm designs

Add depth and dimension to walls, with our unique textures including sandstone, linen, tile, and beaded finish. Beyond the beauty, Varietex offers all the same benefits of traditional FRP wall coverings.

## product specs

### AVAILABLE SIZES:

4' x 8' | 4' x 10'

### THICKNESSES:

0.09" (sandstone + linen) | 0.075" (beaded)

### FIRE RATINGS:\*\*

Class A per ASTM E-84 (sandstone + linen only)

Class C per ASTM E-84 | CAN/ULC-S102

\*\* see technical data sheets for fire rating

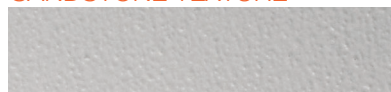
### APPLICATIONS:

- School Hallways
- Cafeterias
- Restrooms
- Dining Rooms
- Reception Areas
- Health Clubs
- Hospitals

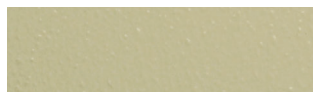
### FEATURES:

- Mold + Mildew Free
- Meets USDA/FSIS Requirements
- Easy to Install
- Cleanable
- Durable

### SANDSTONE TEXTURE



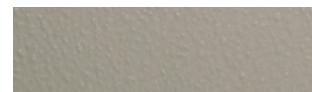
Cotton White | 1130



Almond Breeze | 866

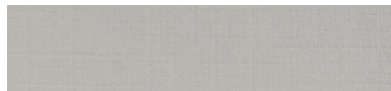


Fawn Brown | 809

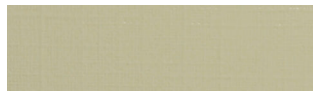


Morning Mist Gray | 636

### LINEN TEXTURE



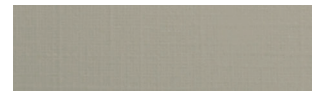
Cotton White | 1130



Almond Breeze | 866

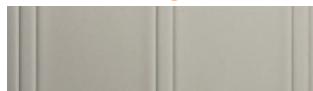


Fawn Brown | 809



Morning Mist Gray | 636

### BEADED FINISH



Cotton White | 1130

MINIMUM ORDER QUANTITIES AND OTHER TERMS MAY APPLY.

DUE TO LIMITATIONS OF THE PRINTING PROCESS, PATTERNS AND COLORS MAY VARY. THEY ARE A REPRESENTATION OF THE PRODUCT. PLEASE OBTAIN A SAMPLE BEFORE MAKING A FINAL SELECTION AT [FRPSAMPLES.COM](http://FRPSAMPLES.COM)



## Sequentia Corrugated® translucent corrugated panels



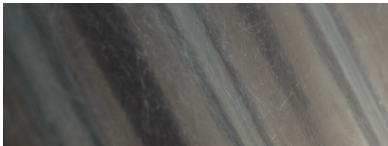
SEQUENTIA CORRUGATED SUPER 6-- | WHITE (920)

### add coverage

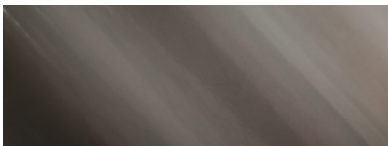
Sequentia translucent corrugated panels are ideal for patios, pool enclosures, carports, greenhouses and more. We offer a variety of products to meet the needs of residential applications

### Super 600 enhanced weathering frp panel

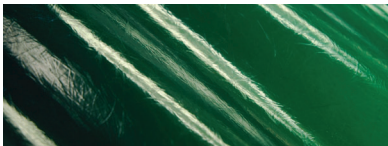
A UV resistant panel with a smooth finish and twenty year limited warranty.



Clear | 700



White | 920



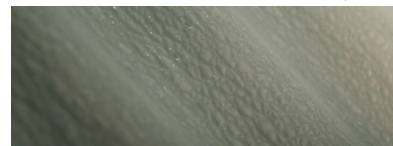
Green | 1307

### WeatherGlaze standard frp panel

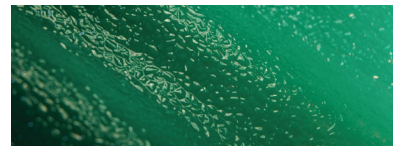
A textured finish and ten year limited warranty.



Clear | 711



White | 912



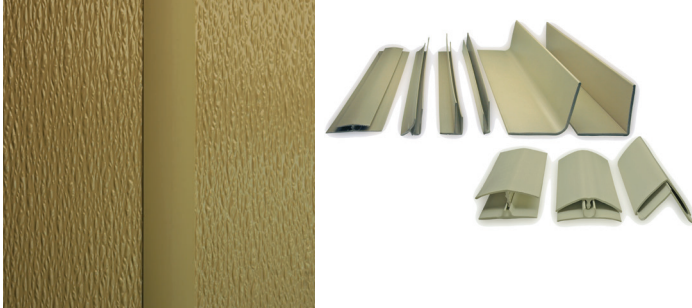
Green | 933



## SEAM TREATMENT ACCESSORIES

Crane Composites offers an array of seam treatment options to complete your wall panel installations.

### Polypropylene/PVC Moldings standard for sequentia + wide for sequentia laminated



### Silhouette Trims for varietex panels



### Beaded Panel Molding for varietex beaded panels



### Corrugated Moldings for sequentia corrugated panels



## INSTALLATION TOOLS

Our wall panels are easy to install with our tools

Installation accessories include our Crane Fast Grab or Crane Advanced Polymer Adhesive, rollers and trowels along with detailed installation guides and videos.

Visit [cranecomposites.com/resources.html](http://cranecomposites.com/resources.html) for detailed installation information.



## who we are

Crane Composites Inc., a subsidiary of Crane Co. (NYSE:CR, is the world's leading provider of fiber-reinforced composite materials.



## The superior option

Since 1954, we have continued to pioneer numerous patented technologies for industrial and commercial product applications. Crane Composites fiber-reinforced panels (FRP) can be found in virtually every type of vertical market, from highly industrialized environments to stylish retail and hospitality settings.

No matter what the application, our products and team reflect our mission statement: we are a performance

driven organization committed to global leadership and products of high-quality composite materials.

Customers benefit not only from the outstanding performance characteristics of our products, but also from our extensive support programs. Our expert product teams are focused on the needs of customers to provide unparalleled service and expertise.



[cranecomposites.com](http://cranecomposites.com) | 1.800.435.0080 | [sales@cranecomposites.com](mailto:sales@cranecomposites.com)

The following are trademarks of Crane Composites, Inc. or a related company: Sequentia, Silhouette Trims and Varietex  
Form 2507 | Rev. 23 | 09.22 (10171)

