



CONCRETE CLARITY ENHANCER



## Product Description & Benefits

### Accelerated & Enhanced Concrete Clarity

*KickStart™ Clarity Enhancer* is a unique liquid formulation that provides accelerated and enhanced clarity to hard steel troweled concrete in fewer grinding/polishing steps.

In conjunction with *CreteClean Plus with Scar Guard Single Dose™*, KickStart produces enhanced clarity at any finish, whether cream, salt 'n pepper or exposed aggregate.

### Lower Labor & Equipment Costs, Higher Profits

The KickStart process provides applicators/contractors with the ability to increase efficiency, save on labor and equipment costs, and ultimately increase profits.

#### + Increased Efficiency, Better Results

- Does not require floor to be pre-wet overnight
- Fewer steps than traditional grinding method; allows for quicker progression from metals to hybrids to resins
- Better performing diamond tools as a result of better lubricated environment

#### + Significant Labor and Equipment Cost Savings

- Fewer steps, less man hours on jobsite
- Fewer steps, less diamond tools needed
- Less operator fatigue due to enhanced lubricated environment

#### + Higher Profits

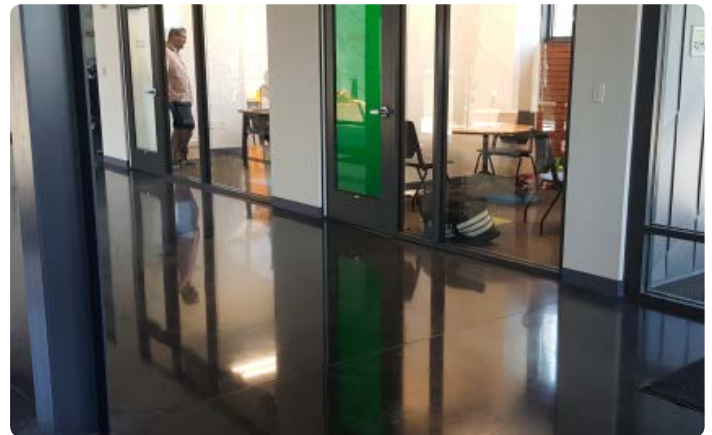
- Accomplish more work in less time, without the need to hire more labor or purchase more equipment or tools

### Benefits & Advantages

- Accelerated, enhanced clarity in fewer grinding/polishing steps
- Achieve higher clarity with lower grit diamonds
- Increased diamond tool performance as a result of enhanced lubricated environment/slurry
- Easy to clean slurry from diamonds and floor
- Can be used on Ashford Formula, RetroPlate and terrazzo floors, and in conjunction with all Curecrete supporting products
- Suitable for new or existing concrete; concrete restoration
- Single component solution
- Does not require floor to be pre-wet overnight

## Technical Data +

<b>Coverage Area:</b>	400 ft <sup>2</sup> /gal (9.8 m <sup>2</sup> /L)
<b>Form:</b>	Clear, colorless liquid
<b>Odor:</b>	Typical
<b>pH:</b>	11.2 (+/- 0.5)
<b>Specific Gravity:</b>	1.03 - 1.04 g
<b>Packaging:</b>	1 gal (3.79 L) Jugs 5 gal (19 L) Pails 55 gal (208 L) Drums
<b>Freeze Thaw Cycle:</b>	No Effect
<b>Storage Life:</b>	Two (2) Years



### Technical Info, Application Instructions & Safety Data Sheet (SDS)

Technical information and assistance can be obtained by contacting Curecrete Distribution, Inc. at 1.800.998.5664 or [techsupport@curecrete.com](mailto:techsupport@curecrete.com).

**For emergencies call 800.633.8253 or +1.801.629.0667.**



Kickstart + RetroPlate  
Application Video



Kickstart + Ashford  
Application Video



Safety Data Sheet  
(SDS)

## Typical Application Comparison & Overview

### RetroPlate and KickStart+RetroPlate

This chart compares a typical RetroPlate application process with a KickStart+RetroPlate application process. *Please read full application instructions and test compatibility before full-scale application.*

RETROPLATE	KICKSTART + RETROPLATE
CLEAN - CreteClean Plus w/Scar Guard	CLEAN - CreteClean Plus w/Scar Guard
GRIND - 70 Grit Metal	ENHANCE & TONE - KickStart
CLEAN - CreteClean Plus w/Scar Guard	GRIND - 200 Grit Metal*
GRIND - 100 Grit Metal	GRIND - 400 Grit Hybrid
CLEAN - CreteClean Plus w/Scar Guard	CLEAN - CreteClean Plus w/Scar Guard
GRIND - 100 Grit Hybrid	DENSIFY - RetroPlate
CLEAN - CreteClean Plus w/Scar Guard	CLEAN - CreteClean Plus w/Scar Guard
DENSIFY - RetroPlate	POLISH - 800 Grit Resin
CLEAN - CreteClean Plus w/Scar Guard	CLEAN - CreteClean Plus w/Scar Guard
POLISH - 200 Grit Hybrid or Resin	BURNISH - A-Pad 3000 Pad
CLEAN - CreteClean Plus w/Scar Guard	<b>The KickStart process eliminates 6 overall steps and 4 grinding/polishing steps.</b>
POLISH - 400 Grit Resin	
POLISH - 800 Grit Resin	
POLISH - 1500 Grit Resin	
CLEAN - CreteClean Plus w/Scar Guard	
BURNISH - A-Pad 3000 Pad	

\*The initial grind could be from 50 grit hybrid up to 200 grit hybrid.

### Ashford Formula and KickStart+Ashford Formula

This chart compares a typical Ashford Formula\* application process with a KickStart+Ashford Formula application process. *Please read full application instructions and test compatibility before full-scale application. \*Not used as a cure.*

ASHFORD FORMULA	KICKSTART + ASHFORD FORMULA
CLEAN - CreteClean Plus w/Scar Guard	CLEAN - CreteClean Plus w/Scar Guard
DENSIFY - Ashford Formula	ENHANCE & TONE - KickStart
CLEAN - CreteClean Plus w/Scar Guard	CLEAN - CreteClean Plus w/Scar Guard
BURNISH - Black Pad or CreteHeat™	DENSIFY - Ashford Formula
<b>The KickStart process adds 2 steps and yields better results than traditional burnishing.</b>	CLEAN - CreteClean Plus w/Scar Guard
	BURNISH - Black Pad or CreteHeat™



## Typical Labor & Time Overview

The charts below compare a typical RetroPlate and Ashford Formula process against respective KickStart processes. Significant savings in time and labor (and also tooling equipment) are achieved with the accelerated progression from metals to hybrids to resins.

\*Figures below are based on a 400 ft<sup>2</sup> area.

RETROPLATE	LABOR	RETROPLATE + KICKSTART	LABOR
CreteClean Plus w/SG	Same	CreteClean Plus w/SG	Same
70 Grit Metal	<b>160 min.</b>	KickStart	<b>5 min.</b>
CreteClean Plus w/SG	Same	200 Grit Metal	<b>70 min.</b>
100 Grit Metal	<b>80 min.</b>	400 Grit Hybrid	Same
CreteClean Plus w/SG	Same	CreteClean Plus w/SG	Same
100 Grit Hybrid	<b>80 min.</b>	RetroPlate	Same
CreteClean Plus w/SG	Same	CreteClean Plus w/SG	Same
RetroPlate	Same	800 Grit Resin	Same
CreteClean Plus w/SG	Same	CreteClean Plus w/SG	Same
200 Grit Hybrid	<b>60 min.</b>	A-Pad 3000 Pad	Same
CreteClean Plus w/SG	<b>5 min.</b>	<b>Time Differential</b> 420-75 = 345 min (5 hrs 45 min)	
400 Grit Resin	Same		
800 Grit Resin	Same		
1500 Grit Resin	<b>30 min.</b>		
CreteClean Plus w/SG	<b>5 min.</b>		
A-Pad 3000 Pad	Same		
<b>TOTAL</b>	<b>+420 min.</b>		

ASHFORD FORMULA	LABOR	KICKSTART + ASHFORD FORMULA	LABOR
CreteClean Plus w/SG	Same	CreteClean Plus w/SG	Same
Ashford Formula	Same	KickStart	<b>5 min.</b>
CreteClean Plus w/SG	Same	CreteClean Plus w/SG	<b>5 min.</b>
Burnish (Black Pad)	Same	Ashford Formula	Same
<b>Time Differential</b> 0+10 = 10 min		CreteClean Plus w/SG	Same
		Burnish (Black Pad)	Same
<b>TOTAL</b>	<b>0 min.</b>	<b>TOTAL</b>	<b>+10 min.</b>

## LABOR & TIME COMPARISON

**RP + KickStart**  
**SAVES**  
**5 hr 45 min**

**AF + KickStart**  
**ADDS**  
**10 min**

## Product Distribution & Ordering

KickStart is distributed through a worldwide network of regional factory warehouses, area sales representatives and distributors. For pricing and shipping information, please contact:

Curecrete Distribution, Inc.  
1203 Spring Creek Place  
Springville, UT 84663 USA

Phone: 801.489.5663  
Free: 800.998.5664  
Fax: 801.489.3307  
customer@care@carecrete.com