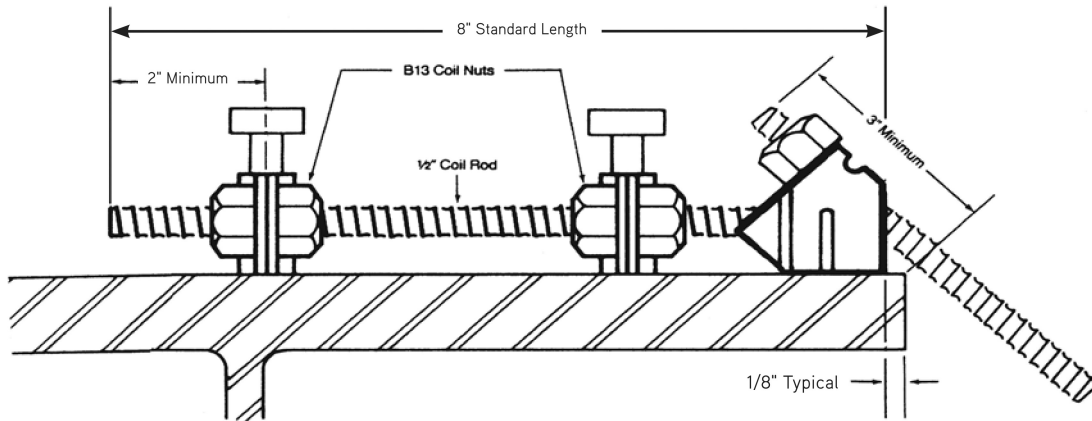


C25 45° Adjustable Half Hanger



This adjustable half hanger consists of a 45° end clip welded to a length of 1/2" diameter coil rod, two stirrup clips and five 1/2" coil nuts. The standard length is 8". Other lengths, additional stirrup clips and coil nuts are available on request.

These half hangers are used to support overhang brackets for exterior deck formwork where one-sided forming is required, welding is not permitted and rebar or headed stud shear connectors are available to connect the hanger to.

Stirrup clips are available in #3 thru #8 rebar sizes or 3/8", 1/2", 5/8", 3/4", and 7/8" stud diameters as required.

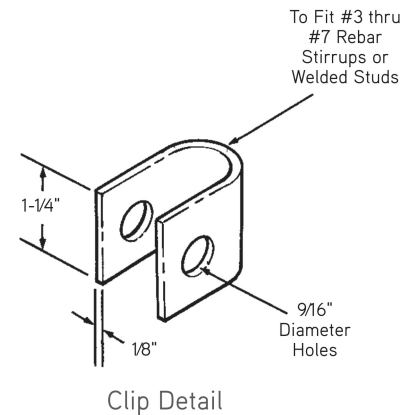
End clip accepts a 1/2" diameter coil bolt or coil rod.

SAFETY NOTE:

In order to develop the safe working load, two coil nuts must compress each stirrup clip securely to the rebar stirrup or shear stud. Failure to accomplish a secure connection will greatly reduce the safe working load of the hanger.

Safe Working Load
3,000 lbs. with 2 Clips

SWL provides a factor of safety of approximately 2 to 1.



Clip Detail

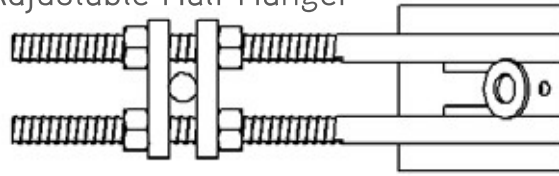
To Order:

Specify: (1) quantity, (2) name, (3) type, (4) length, (5) number of clips and (6) clip size.

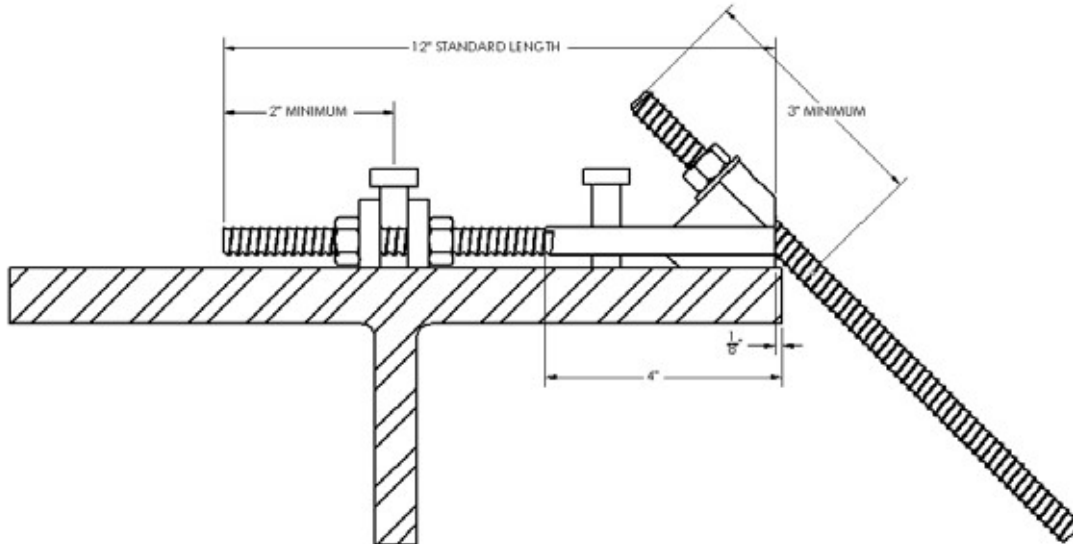
Example:

125 pcs. C25 Pres-Steel Adjustable Half Hanger, 18" long with 3 clips for #6 Rebar.

C25 45° Heavy Duty Adjustable Half Hanger



Top View without B13 and Coil Rod at 45°



This adjustable half hanger consists of a 45° end clip welded to two 1/2" diameter coil rods, two connection bars and five 1/2" coil nuts. The standard length is 12". Other lengths are available on request.

These half hangers are used to support overhang brackets for exterior deck formwork where one-sided forming is required, welding is not permitted and rebar or headed stud shear connectors are available to connect the hanger to.

Safe Working Load
6,000 lbs.

SWL provides a factor of safety of approximately 2 to 1.

To Order:

Specify: (1) quantity, (2) name, (3) type, (4) length, (5) number of connection bars.

Example:

125 pcs. C25 Heavy Duty Adjustable Half Hanger, 12" long with 2 connection bars.