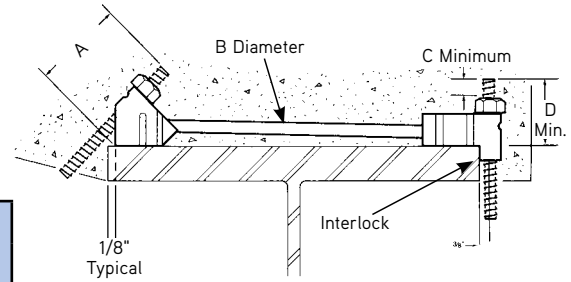


C60 Type 4-A Pres-Steel Hanger

The Type 4-A Pres-Steel Hanger is fabricated with a 90° interlock type end clip and a 45° end clip, both of which are electric resistance welded to a 0.440" diameter wire strut. Both end clips are designed to accept 1/2" diameter coil bolts and/or coil rods and nuts.

The 90° end has an interlock end clip which resist lateral forces from the loads applied at the 45° end.



Type	Safe Working Load	Bolt Diameter		A	B	C	D
		45° End	90° End				
4-A	6,000 lbs. per Side	1/2"	1/2"	3"	.440"	1/2"	2"

S.W.L. provides a factor of safety of approximately 2 to 1.

To Order:

Specify: (1) quantity, (2) name, (3) flange width.

Example:

150 pcs. C60 Type 9-A Pres-Steel Hanger for 18" flange.

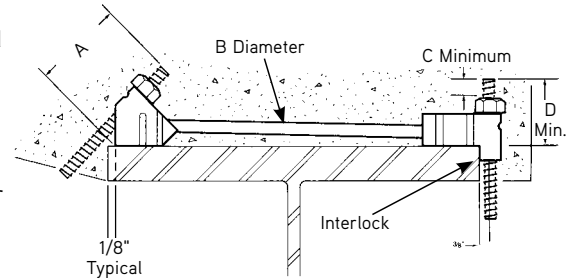
C60 Type 9-A Pres-Steel Hanger

The type 9-A Pres-Steel Hanger is fabricated with a 90° interlock type end clip and a 45° end clip, both of which are electric resistance welded to a 0.750" diameter wire strut. Both end clips are designed to accept 3/4" diameter coil bolts and /or coil rods using B13H (Heavy Hex) nut.

Type 9-A hanger is similar to the 4-A, except it is fabricated from 3/4" diameter strut wire and heavier end clips designed to accept 3/4" diameter coil rod.

The Type 9-A hanger is intended for use with the C89L Heavy Duty Bridge Overhang Brackets, which requires the use of a 3/4" diameter coil bolt.

The 90° end has an interlock end clip which resist lateral forces from the loads applied at the 45° end.



SAFETY NOTE: 11,300 lbs. per side with B13H Coil Nuts

S.W.L. provides a factor of safety of approximately 2 to 1.

WARNING: Hangers must be equally loaded on both sides.

To develop the safe working load of the Type 9-A requires the use of 3/4" B13H (Heavy Hex) Coil Nuts or two 3/4" B13 Coil Nuts with a 3/4" E7 Cut Washer.

To Order:

Specify: (1) quantity, (2) name, (3) flange width.

Example:

600 pcs. C60 Type 9 Pres-Steel Hanger for 24" flange.

Type	Safe Working Load	Bolt Diameter		A	B	C	D
		45° End	90° End				
9-A	11,300 lbs. per Side	3/4"	3/4"	4-1/2"	.750"	3/4"	3-1/2"

S.W.L. provides a factor of safety of approximately 2 to 1.

C67 Tie Bar Beam Clip Pre-Stress Hanger

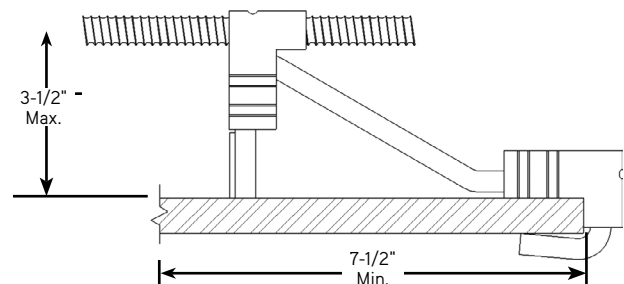
C67 Tie Bar Beam Clip Pre-stress Hanger is an ideal half hanger for supporting overhang formwork over stay-in-place decking. These half hangers are fabricated with the strut wire formed into a "J" shape so it engages the edge of the flange. A 90° interlock end clip is welded to the strut wire to provide increase capacity. This hanger is furnished with a 90° end clip that accepts a 1/2" diameter coil rod or bolt. Other sizes and configurations available. Contact technical service for assistance.

To Order:

Specify: (1) quantity, (2) name, (3) flange width, (4) anti-tip plate, if needed.

Example:

150 pcs. C67 Tie bar Beam Clip Pres-Steel Hanger, 1.00 Flange Thickness.



Hanger Safe Working Load
2,500 lbs. at 2 to 1 factor of safety.