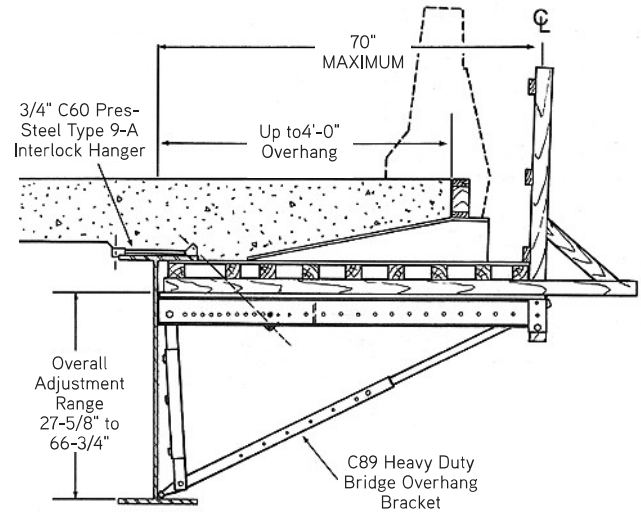


C89 Heavy Duty Bridge Overhang Bracket (72")

Up to 4'-0" Overhangs on Steel Girders



Bridge Overhang Brackets

Design Load PSF	Slab Thickness	Bracket "D" Dimension	Screed Load Per Bracket = S _i						Insert SWL
			1,500 lbs.	1,250 lbs.	750 lbs.	500 lbs.	250 lbs.	0 lbs.	
			Bracket "A" Dimension = 18" to 20"						
125	6"	30"	7'-11"	8'-0"	8'-0"	8'-0"	8'-0"	8'-0"	8000
			8'-0"	8'-0"	8'-0"	8'-0"	8'-0"	8'-0"	11300
		45"	7'-11"	8'-0"	8'-0"	8'-0"	8'-0"	8'-0"	8000
			8'-0"	8'-0"	8'-0"	8'-0"	8'-0"	8'-0"	11300
		60"	7'-11"	8'-0"	8'-0"	8'-0"	8'-0"	8'-0"	8000
			8'-0"	8'-0"	8'-0"	8'-0"	8'-0"	8'-0"	11300
150	8"	30"	6'-9"	7'-2"	8'-0"	8'-0"	8'-0"	8'-0"	8000
			7'-5"	8'-0"	8'-0"	8'-0"	8'-0"	8'-0"	11300
		45"	6'-9"	7'-2"	8'-0"	8'-0"	8'-0"	8'-0"	8000
			8'-0"	8'-0"	8'-0"	8'-0"	8'-0"	8'-0"	11300
		60"	6'-9"	7'-2"	8'-0"	8'-0"	8'-0"	8'-0"	8000
			8'-0"	8'-0"	8'-0"	8'-0"	8'-0"	8'-0"	11300
175	10"	30"	5'-11"	6'-3"	7'-0"	7'-4"	7'-8"	8'-0"	8000
			6'-9"	7'-3"	8'-0"	8'-0"	8'-0"	8'-0"	11300
		45"	6'-0"	6'-3"	7'-0"	7'-4"	7'-8"	8'-0"	8000
			8'-0"	8'-0"	8'-0"	8'-0"	8'-0"	8'-0"	11300
		60"	6'-0"	6'-3"	7'-0"	7'-4"	7'-8"	8'-0"	8000
			8'-0"	8'-0"	8'-0"	8'-0"	8'-0"	8'-0"	11300
200	12"	30"	5' 3"	5'-7"	6'-3"	6'-8"	7'-0"	7'-4"	8000
			6'-0"	6'-9"	8'-0"	8'-0"	8'-0"	8'-0"	11300
		45"	5' 3"	5'-7"	6'-3"	6'-8"	7'-0"	7'-4"	8000
			8'-0"	8'-0"	8'-0"	8'-0"	8'-0"	8'-0"	11300
		60"	5' 3"	5'-7"	6'-3"	6'-8"	7'-0"	7'-4"	8000
			8'-0"	8'-0"	8'-0"	8'-0"	8'-0"	8'-0"	11300

Notes:

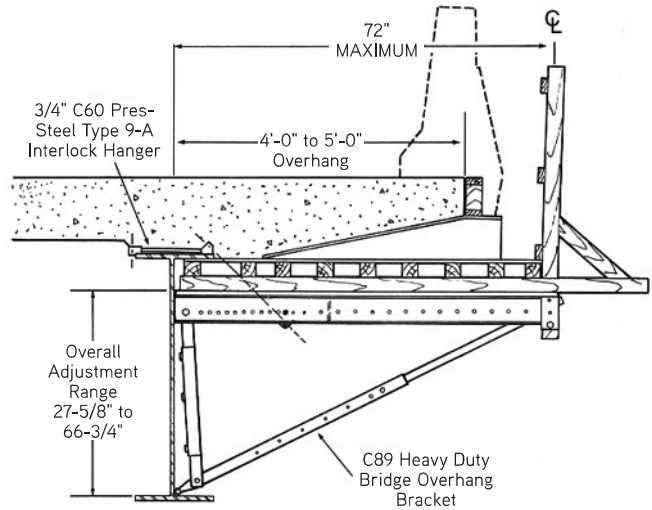
- Design includes 50 PSF live load on walkway area.
- Overhang form lumber must be checked to make sure it will span the selected spacing.

Warning:

Contact Dayton Superior Technical Assistance for recommended spacings when conditions on your specific project vary from those shown.

C89 Heavy Duty Bridge Overhang Bracket (72")

Over 4'-0" to 5'-0" Overhangs on Steel Girders



Design Load PSF	Slab Thickness	Bracket "D" Dimension	Screed Load Per Bracket = S ₁						Insert SWL
			1,500 lbs.	1,250 lbs.	750 lbs.	500 lbs.	250 lbs.	0 lbs.	
			Bracket "A" Dimension = 18" to 20"						
125	6"	30"	5'-6"	6'-6"	8'-0"	8'-0"	8'-0"	8'-0"	8000
			5'-6"	6'-6"	8'-0"	8'-0"	8'-0"	8'-0"	11300
		45"	6'-9"	7'-3"	8'-0"	8'-0"	8'-0"	8'-0"	8000
			8'-0"	8'-0"	8'-0"	8'-0"	8'-0"	8'-0"	11300
		60"	6'-9"	7'-3"	8'-0"	8'-0"	8'-0"	8'-0"	8000
			8'-0"	8'-0"	8'-0"	8'-0"	8'-0"	8'-0"	11300
150	8"	30"	5'-0"	5'-9"	7'-0"	7'-3"	7'-8"	8'-0"	8000
			5'-0"	5'-9"	7'-4"	8'-0"	8'-0"	8'-0"	11300
		45"	5'-10"	6'-3"	6'-11"	7'-3"	7'-8"	8'-0"	8000
			8'-0"	8'-0"	8'-0"	8'-0"	8'-0"	8'-0"	11300
		60"	5'-10"	6'-3"	6'-11"	7'-3"	7'-8"	8'-0"	8000
			8'-0"	8'-0"	8'-0"	8'-0"	8'-0"	8'-0"	11300
175	10"	30"	4'-3"	5'-0"	6'-0"	6'-3"	6'-8"	7'-0"	8000
			4'-3"	5'-0"	6'-6"	7'-3"	8'-0"	8'-0"	11300
		45"	5'-1"	5'-4"	6'-0"	6'-4"	6'-8"	7'-0"	8000
			7'-6"	7'-9"	8'-0"	8'-0"	8'-0"	8'-0"	11300
		60"	5'-1"	5'-4"	6'-0"	6'-4"	6'-8"	7'-0"	8000
			8'-0"	8'-0"	8'-0"	8'-0"	8'-0"	8'-0"	11300
200	12"	30"	3'-9"	4'-6"	5'-3"	5'-7"	5'-10"	6'-2"	8000
			3'-9"	4'-6"	5'-9"	6'-5"	7'-1"	7'-9"	11300
		45"	4'-5"	4'-9"	5'-3"	5'-7"	5'-10"	6'-2"	8000
			6'-9"	7'-4"	7'-10"	8'-0"	8'-0"	8'-0"	11300
		60"	4'-5"	4'-8"	5'-3"	5'-7"	5'-10"	6'-2"	8000
			7'-0"	7'-4"	7'-10"	8'-0"	8'-0"	8'-0"	11300

Notes:

Design includes 50 PSF live load on walkway area.

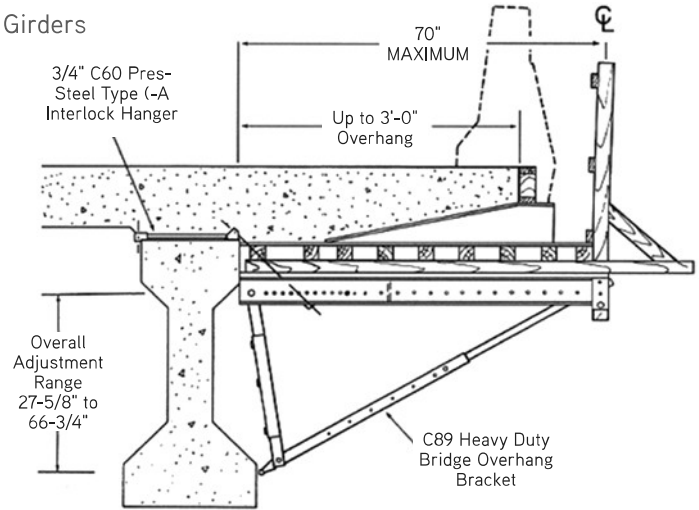
Overhang form lumber must be checked to make sure it will span the selected spacing.

Warning:

Contact Dayton Superior Technical Assistance for recommended spacings when conditions on your specific project vary from those shown.

C89 Heavy Duty Bridge Overhang Bracket (72")

Up to 3'-0" Overhangs on Precast/Prestressed Concrete Girders



Bridge Overhang Brackets

Design Load PSF	Slab Thickness	Bracket "D" Dimension	Screed Load Per Bracket = S ₁						Insert SWL
			1,500 lbs.	1,250 lbs.	750 lbs.	500 lbs.	250 lbs.	0 lbs.	
			Bracket "A" Dimension = 12" to 16"						
125	6"	30"	7'-8"	8'-0"	8'-0"	8'-0"	8'-0"	8'-0"	8000
			8'-0"	8'-0"	8'-0"	8'-0"	8'-0"	8'-0"	11300
		45"	7'-8"	8'-0"	8'-0"	8'-0"	8'-0"	8'-0"	8000
			8'-0"	8'-0"	8'-0"	8'-0"	8'-0"	8'-0"	11300
		60"	7'-8"	8'-0"	8'-0"	8'-0"	8'-0"	8'-0"	8000
			8'-0"	8'-0"	8'-0"	8'-0"	8'-0"	8'-0"	11300
150	8"	30"	6'-8"	7'-1"	8'-0"	8'-0"	8'-0"	8'-0"	8000
			8'-0"	8'-0"	8'-0"	8'-0"	8'-0"	8'-0"	11300
		45"	6'-8"	7'-1"	8'-0"	8'-0"	8'-0"	8'-0"	8000
			8'-0"	8'-0"	8'-0"	8'-0"	8'-0"	8'-0"	11300
		60"	6'-8"	7'-1"	8'-0"	8'-0"	8'-0"	8'-0"	8000
			8'-0"	8'-0"	8'-0"	8'-0"	8'-0"	8'-0"	11300
175	10"	30"	6'-0"	6'-4"	7'-1"	7'-5"	7'-10"	8'-0"	8000
			8'-0"	8'-0"	8'-0"	8'-0"	8'-0"	8'-0"	11300
		45"	6'-0"	6'-4"	7'-1"	7'-5"	7'-10"	8'-0"	8000
			8'-0"	8'-0"	8'-0"	8'-0"	8'-0"	8'-0"	11300
		60"	6'-0"	6'-4"	7'-1"	7'-5"	7'-10"	8'-0"	8000
			8'-0"	8'-0"	8'-0"	8'-0"	8'-0"	8'-0"	11300
200	12"	30"	5'-4"	5'-8"	6'-4"	6'-8"	7'-0"	7'-4"	8000
			8'-0"	8'-0"	8'-0"	8'-0"	8'-0"	8'-0"	11300
		45"	5'-4"	5'-8"	6'-4"	6'-8"	7'-0"	7'-4"	8000
			8'-0"	8'-0"	8'-0"	8'-0"	8'-0"	8'-0"	11300
		60"	5'-4"	5'-8"	6'-4"	6'-8"	7'-0"	7'-4"	8000
			8'-0"	8'-0"	8'-0"	8'-0"	8'-0"	8'-0"	11300

Notes:

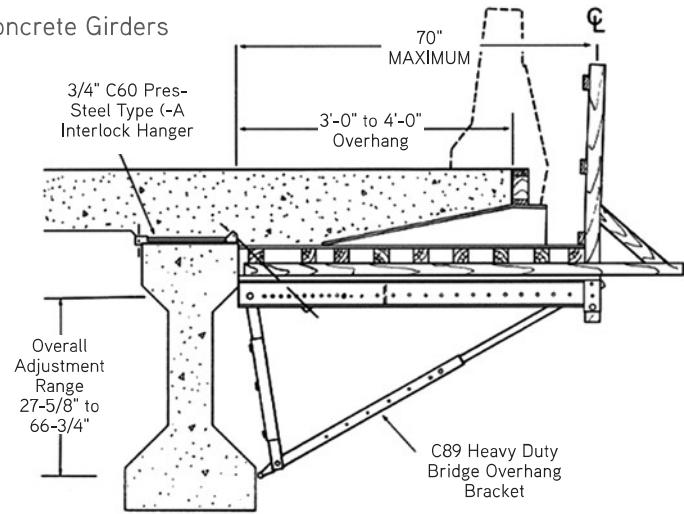
- Design includes 50 PSF live load on walkway area.
- Overhang form lumber must be checked to make sure it will span the selected spacing.

Warning:

Contact Dayton Superior Technical Assistance for recommended spacings when conditions on your specific project vary from those shown.

C89 Heavy Duty Bridge Overhang Bracket (72")

Over 3'-0" to 4'-0" Overhangs on Precast/Prestressed Concrete Girders



Design Load PSF	Slab Thickness	Bracket "D" Dimension	Screed Load Per Bracket = S ₁						Insert SWL
			1,500 lbs.	1,250 lbs.	750 lbs.	500 lbs.	250 lbs.	0 lbs.	
			Bracket "A" Dimension = 12" to 16"						
125	6"	30"	6'-9"	7'-2"	8'-0"	8'-0"	8'-0"	8'-0"	8000
			8'-0"	8'-0"	8'-0"	8'-0"	8'-0"	8'-0"	11300
		45"	6'-9"	7'-2"	8'-0"	8'-0"	8'-0"	8'-0"	8000
			8'-0"	8'-0"	8'-0"	8'-0"	8'-0"	8'-0"	11300
		60"	6'-9"	7'-2"	8'-0"	8'-0"	8'-0"	8'-0"	8000
			8'-0"	8'-0"	8'-0"	8'-0"	8'-0"	8'-0"	11300
150	8"	30"	5'-9"	6'-3"	6'-10"	7'-3"	7'-7"	7'-11"	8000
			7'-8"	8'-0"	8'-0"	8'-0"	8'-0"	8'-0"	11300
		45"	5'-9"	6'-3"	6'-10"	7'-3"	7'-7"	7'-11"	8000
			8'-0"	8'-0"	8'-0"	8'-0"	8'-0"	8'-0"	11300
		60"	5'-9"	6'-3"	6'-10"	7'-3"	7'-7"	7'-11"	8000
			8'-0"	8'-0"	8'-0"	8'-0"	8'-0"	8'-0"	11300
175	10"	30"	5'-0"	5'-4"	6'-0"	6'-3"	6'-7"	6'-11"	8000
			6'-9"	7'-6"	8'-0"	8'-0"	8'-0"	8'-0"	11300
		45"	5'-0"	5'-4"	6'-0"	6'-3"	6'-7"	6'-11"	8000
			8'-0"	8'-0"	8'-0"	8'-0"	8'-0"	8'-0"	11300
		60"	5'-0"	5'-4"	6'-0"	6'-3"	6'-7"	6'-11"	8000
			8'-0"	8'-0"	8'-0"	8'-0"	8'-0"	8'-0"	11300
200	12"	30"	4'-6"	4'-9"	5'-3"	5'-7"	5'-10"	6'-2"	8000
			6'-1"	6'-8"	7'-11"	8'-0"	8'-0"	8'-0"	11300
		45"	4'-6"	4'-9"	5'-3"	5'-7"	5'-10"	6'-2"	8000
			7'-3"	7'-7"	7'-11"	8'-0"	8'-0"	8'-0"	11300
		60"	4'-6"	4'-9"	5'-3"	5'-7"	5'-10"	6'-2"	8000
			7'-3"	7'-7"	7'-11"	8'-0"	8'-0"	8'-0"	11300

Notes:

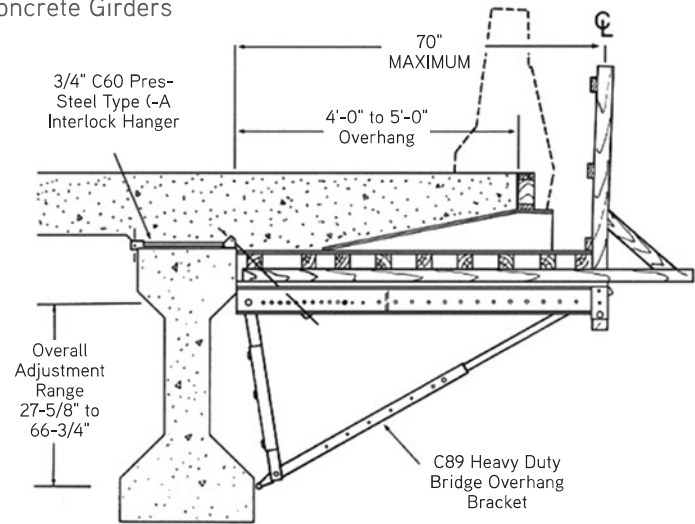
- Design includes 50 PSF live load on walkway area.
- Overhang form lumber must be checked to make sure it will span the selected spacing.

Warning:

Contact Dayton Superior Technical Assistance for recommended spacings when conditions on your specific project vary from those shown.

C89 Heavy Duty Bridge Overhang Bracket (72")

Over 4'-0" to 5'-0" Overhangs on Precast/Prestressed Concrete Girders



Bridge Overhang Brackets

Design Load PSF	Slab Thickness	Bracket "D" Dimension	Screed Load Per Bracket = S ₁						Insert SWL
			1,500 lbs.	1,250 lbs.	750 lbs.	500 lbs.	250 lbs.	0 lbs.	
			Bracket "A" Dimension = 12" to 16"						
125	6"	30"	4'-8"	5'-5"	7'-0"	7'-4"	7'-8"	8'-0"	8000
			4'-8"	5'-5"	7'-0"	7'-9"	8'-0"	8'-0"	11300
		45"	5'-11"	6'-3"	7'-0"	7'-4"	7'-8"	8'-0"	8000
			8'-0"	8'-0"	8'-0"	8'-0"	8'-0"	8'-0"	11300
		60"	5'-11"	6'-3"	7'-0"	7'-4"	7'-8"	8'-0"	8000
			8'-0"	8'-0"	8'-0"	8'-0"	8'-0"	8'-0"	11300
150	8"	30"	4'-0"	4'-8"	5'-11"	6'-2"	6'-6"	6'-10"	8000
			4'-0"	4'-8"	6'-0"	6'-9"	7'-5"	8'-0"	11300
		45"	5'-0"	5'-4"	5'-11"	6'-2"	6'-6"	6'-10"	8000
			7'-4"	8'-0"	8'-0"	8'-0"	8'-0"	8'-0"	11300
		60"	5'-0"	5'-4"	5'-11"	6'-4"	6'-6"	6'-10"	8090
			7'-10"	8'-0"	8'-0"	8'-0"	8'-0"	8'-0"	11300
175	10"	30"	3'-6"	4'-1"	5'-1"	5'-5"	5'-8"	5'-11"	8000
			3'-6"	4'-1"	5'-4"	5'-11"	6'-8"	7'-1"	11300
		45"	4'-4"	4'-7"	5'-1"	5'-5"	5'-8"	5'-11"	8000
			6'-5"	7'-1"	7'-7"	7'-10"	8'-0"	8'-0"	11300
		60"	4'-4"	4'-7"	5'-1"	5'-5"	5'-8"	5'-11"	8000
			6'-9"	7'-1"	7'-7"	7'-10"	8'-0"	8'-0"	11300
200	12"	30"	3'-1"	3'-8"	4'-6"	4'-9"	5'-0"	5'-3"	8000
			3'-1"	3'-8"	4'-8"	5'-3"	5'-9"	6'-3"	11300
		45"	3'-10"	4'-1"	4'-6"	4'-9"	5'-0"	5'-8"	8000
			5'-9"	6'-3"	6'-8"	6'-11"	7'-2"	7'-5"	11300
		60"	3'-10"	4'-1"	4'-6"	4'-9"	5'-0"	5'-3"	8000
			6'-0"	6'-8"	6'-8"	6'-11"	7'-2"	7'-5"	11300

Notes:

- Design includes 50 PSF live load on walkway area.
- Overhang form lumber must be checked to make sure it will span the selected spacing.

Warning:

Contact Dayton Superior Technical Assistance for recommended spacings when conditions on your specific project vary from those shown.