



**BUILDING
STRENGTH™**

TOP-CAST®

TOP SURFACE
RETARDER FOR
DECORATIVE
CONCRETE FINISHES





Cerritos Civic Center Library
Los Angeles California, Top-Cast Grade 100

TOP-CAST®

**ELEGANT AND BEAUTIFUL CONCRETE THAT
ENHANCES ANY LANDSCAPE**

TOP-CAST® ADVANTAGES:

- Top-Cast is a waterbased, top surface retarder which does not require covering with plastic for protection. It is available in 12 depths of etch, each one, color and number coded for safety and convenience.
- Ideal for cast-in-place flatwork and the top surface of precast concrete panels. The wide selection of grades available provides a comprehensive range of effects, from a simulated light acid wash or sand blast finish up to full exposure of 1¼ in. (32 mm) aggregate.
- Concrete mix design such as cement content, aggregate size and type will affect final appearance. Consult the online Top-Cast User Guide for additional information.
- With 12 different degrees, or depth of surface paste retardation, a contractor, architect or owner can achieve a wide range of exposed looks, depending on their choice of aggregates, mix designs, integral color, finishing techniques, and level of Top-Cast.
- Extremely environmentally friendly, Top-Cast is unmatched in reliability and control to obtain a uniform, high-quality finish.
- Three-part Guide Specification available upon request, or visit our website.



The Perfect Finish for an Urban Oasis

A multi-billion dollar urban oasis rising in the Phoenix area, CityNorth is a mixed-use residential, commercial and retail area bringing uniquely designed city living to its distinctive desert environment.

While large in scale, the project's design details are thoughtfully woven together to create an appealing mix – from the top of the modern buildings right down to the hardscape walkways. Making the latter look good was one of the responsibilities of Hensel Phelps Construction, the General Contractor for the project.

To create an attractive, textured finish, an acid wash was originally planned for the 128,000 square feet of hardscape sidewalks and courtyard areas. But when tested in small-scale mock-ups – even after three attempts – the acid wash wasn't doing the job.

"We had a lot of blotchiness, spots and inconsistency while testing the acid finish," said Ted Alvarez, project superintendent for Hensel Phelps.

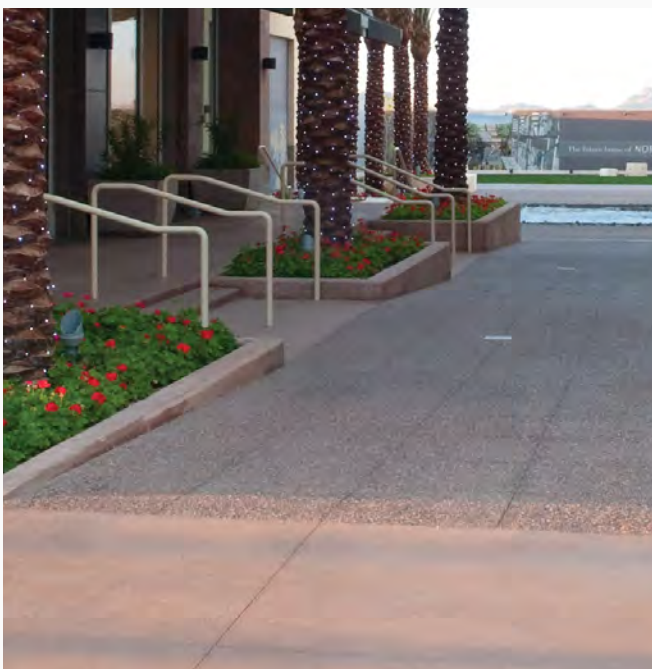
Alvarez explained that with the tremendous scale of the project and the need for a consistent, high-quality finish, Top-Cast 03 was selected for sidewalks. Top-Cast 250 was used in courtyard areas to create a coarse aggregate exposed finish.

The results were a better looking finish and a tremendous labor savings. "What took three man-hours with acid wash was done in just about an hour with Top-Cast, and without the hassles or inconsistencies of the typical acid wash approach," said Alvarez. "There's a lot less managing needed with Top-Cast. We don't have to worry about temperature and tight time tolerances like you do with the traditional acid wash process and approach. You put it down and it works. It's very forgiving."

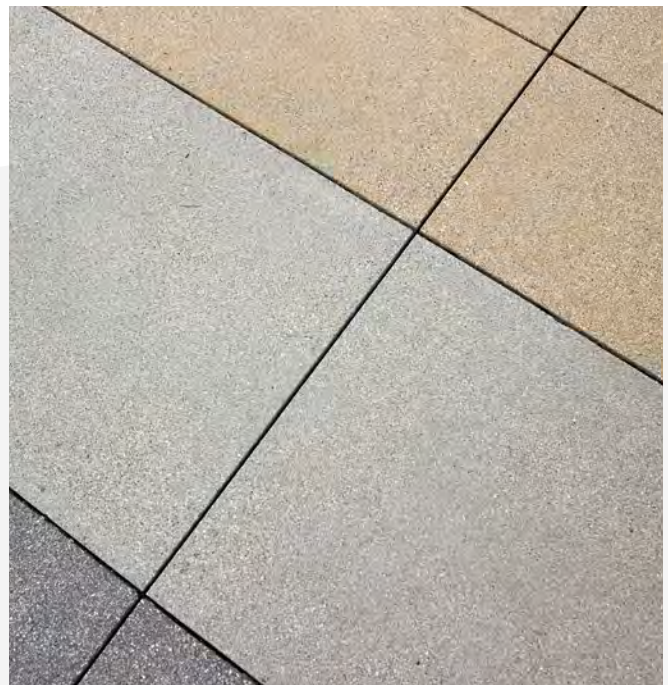
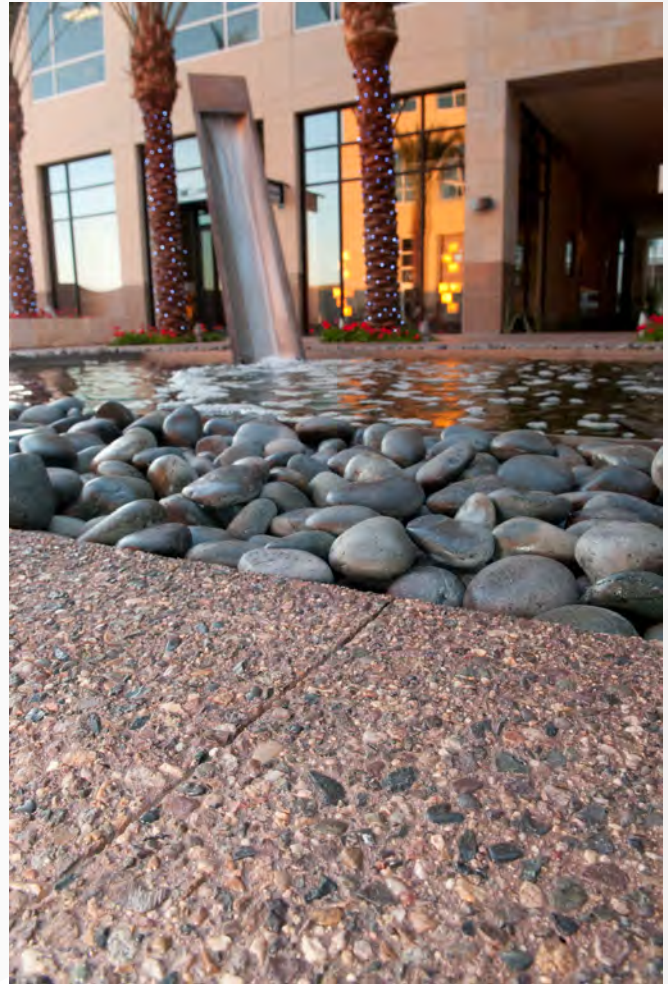
Lead finisher, Jesus Morales, agreed. "You walk away and come back, and it works just as expected. It's really easy and we're very comfortable working with Top-Cast," said Morales. "It gives us much better control and doesn't change the concrete's color like acid-wash can."



The highly textured walkways are discernible even in lower light conditions.






Using two different Top-Cast formulations allowed the contractor to achieve micro-etch and aggregate textures.



Available in 12 different grades that create a range of finishes from micro-etch to fully-exposed aggregate.

Grade selection based on estimated etch depth and strength of mix.

All grades are formulated separately to create distinctly different products.

TOP-CAST FINISH TABLE	NO. CODE	ESTIMATED ETCH DEPTH	PACKAGE COLOR
MICRO ETCH 	01	Light Acid Wash	White
	03	Acid Etch Finish	Violet
	05	Sandblast Finish	Light Blue
	15	Up to 1/4" (6.5mm)	Yellow
MEDIUM ETCH 	25	1/8" - 1/4" (3mm - 6.5mm)	Beige
	50	1/8" - 3/8" (3mm - 9.5mm)	Canary Green
	75	1/8" - 3/8" (3mm - 9.5mm)	Blue
	100	3/8" - 1/2" (9.5mm - 13mm)	Gray
FULL-DEPTH ETCH 	125	3/8" - 5/8" (9.5mm - 16mm)	Pink
	150	3/8" - 5/8" (9.5mm - 16 mm)	Green
	200	5/8" - 1" (16mm - 25mm)	Salmon
	250	1" - 1-1/2" (25mm - 38mm)	Orange

Values listed are for standard 6-Sack Mix. In some conditions with certain mixes, it may be necessary to rinse the retarded matrix the same day. Refer to the Technical Data Sheet, the Top-Cast User Guide and the Safety Data Sheet for full instructions and safe practices prior to use.



Pemberton Café, Georgia Aquarium
 Atlanta Georgia, Top-Cast Grade 250



Dolphin Fountain at the Cerritos Civic Center
Los Angeles CA, Top-Cast grade 200



1125 Byers Road, Miamisburg, OH 45342
937-866-0711 / 888-977-9600

**BUILDING
STRENGTH™**

Victoria Gardens Cultural Center
Rancho Cucamonga, California, Top-Cast Grade 05



TOP-CAST® by GCP Applied Technologies Inc.
Select photos courtesy of Trademark Concrete Systems, Inc.

REV 04/22
Copyright © 2017 Dayton Superior Corporation, All Rights Reserved.