

# DEWALT

## ANCHORS & FASTENERS

### WOOD-KNOCKER® II+

### BANG-IT®+

#### SQUARE RECESS

Located in center of head to eliminate anchor rotation when installing rod

#### PERFORATED NAILS

Allows nails to be easily removed after the formwork is stripped off

#### WIDE BASE

2-3/8 in. diameter base provides stability on formwork

#### SEALING MEMBRANE

Guides threaded rod and protects from spray insulation

#### CINCH NUT TECHNOLOGY

Internal locking mechanism allows for alignment when pushing rod into anchor

#### CONICAL SPRING

Ensures even sealing of anchor to metal deck

#### PRE-DRILLED HOLES

4 holes allow for fastening of anchor to deck

#### TOOTHED SLEEVE

Guides threaded rod and protects from spray insulation

## CAST-IN-PLACE

## PUSH-IN THREAD CONCRETE INSERTS



**GUARANTEED TOUGH.®**

**DWCIPPITSS**

# WOOD-KNOCKER®II+ PUSH-IN THREAD

## ORDERING SPECIFICATIONS

CAT#	SIZE	COLOR	QTY-BOX
PFM2610038	3/8 in.	Green	50
PFM2610012	1/2 in.	Yellow	50

## PUSH-IN INSTALLATION

### WOOD-KNOCKER®II+ PUSH-IN

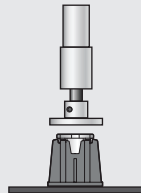
#### POSITION

1.) POSITION INSERT ON FORMWORK, PLASTIC DOWN.



#### DRIVE

2.) DRIVE INSERT HEAD DOWN UNTIL HEAD CONTACTS PLASTIC (E.G. WOOD-KNOCKER INSTALLATION TOOL, HAMMER).



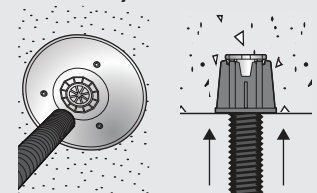
#### PREPARE

3.) AFTER FORMWORK REMOVAL, REMOVE NAILS AS NECESSARY (E.G. FLUSH MOUNTED FIXTURES).



#### ATTACH

4.) PUSH ROD/BOLT THROUGH PLASTIC CENTER (THREAD SEAL) AND FULLY SEAT STEEL ELEMENT INTO THE INSERT. ATTACH FIXTURE AS APPLICABLE (E.G. SEISMIC BRACE).



# BANG-IT®+ PUSH-IN THREAD

## ORDERING SPECIFICATIONS

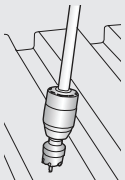
CAT#	SIZE	COLOR	QTY-BOX
PFM3610038	3/8 in.	Green	50
PFM3610012	1/2 in.	Yellow	50

## PUSH-IN INSTALLATION

### BANG-IT®+ PUSH-IN

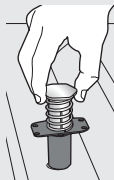
#### CREATE HOLE

1.) CUT (E.G. DRILL/PUNCH) A HOLE IN THE STEEL DECK TO THE HOLE SIZE REQUIRED BY THE INSERT.



#### POSITION

2.) PLACE THE PLASTIC SLEEVE OF THE INSERT THROUGH HOLE IN STEEL DECK.



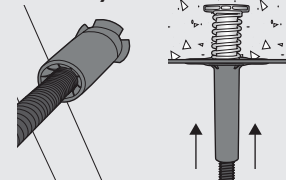
#### MOUNT

3.) STEP ON OR IMPACT THE INSERT HEAD TO ENGAGE. OPTIONALLY, BASE PLATE OF INSERT CAN ALSO BE ATTACHED TO STEEL DECK (E.G. USING SCREWS).



#### ATTACH

4.) PUSH ROD/BOLT THROUGH END OF PLASTIC SLEEVE AND FULLY SEAT STEEL ELEMENT INTO THE INSERT. TRIM AWAY / REMOVE PLASTIC SLEEVE AS NECESSARY FOR SHEAR LOADING. ATTACH FIXTURE AS APPLICABLE (E.G. SEISMIC BRACE).



## BANG-IT®+ BRIDGE BAR

### DESCRIPTION

FOR USE WITH BANG-IT®+ CONCRETE INSERTS WHEN PLACED OVER ANGLED PORTION OF METAL DECK. PROVIDES ENHANCED LOCAL PLACEMENT OF BANG-IT®+ INSERTS.

### SPECIFICATIONS

DESCRIPTION	PACKAGED WITH SCREWS	CAT#	QTY-BOX
Bang-It®+ Bridge Bar	No	PFM3613000	20
	Yes	PFM3613001	20

Copyright ©2021 DeWALT. The following are examples of trademarks for one or more DeWALT power tools and accessories: the yellow and black color scheme; the "D"-shaped air intake grill; the array of pyramids on the handgrip; the kit box configuration; and the array of lozenge-shaped humps on the surface of the tool.

DWCIPPITSS

**GUARANTEED TOUGH.®**

**1-800-4-DEWALT**

**www.ANCHORS.DEWALT.com**