

## PE1000+® VS. HILTI\* RE 500-SD

### Product Comparison

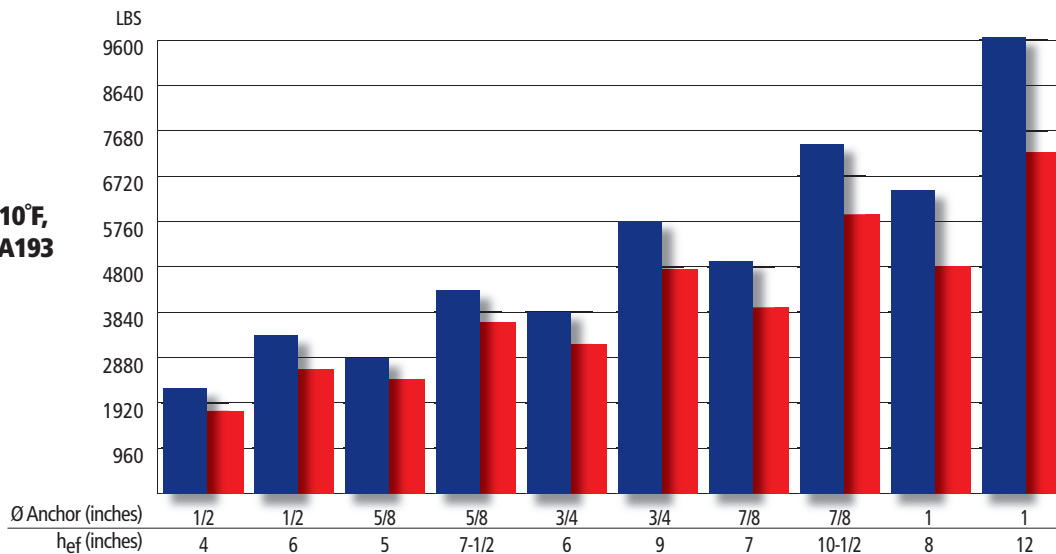
Product Name	PE1000+	RE 500-SD
Company	Powers Fasteners	Hilti*
Description	Epoxy Anchoring System	Epoxy Anchoring System
Size Range (inch)	3/8, 1/2, 5/8, 3/4, 7/8, 1, 1-1/4 / #3, #4, #5, #6, #7, #8, #9, #10	3/8, 1/2, 5/8, 3/4, 7/8, 1, 1-1/4 / #3, #4, #5, #6, #7, #8, #9, #10
ICC-ES ESR (concrete)	ESR-2583	ESR-2322
Cracked Concrete	Yes (except 3/8, #3)	Yes
Seismic Approval in Concrete	Yes (except 3/8, #3)	Yes
Rebar Approval	Yes	Yes
COLA RR	LARR-25849	LARR-25700
LEED	Yes	Yes
VOC	Yes	Yes
Core Drilled	Yes	Yes
NSF 61 (potable drinking water)	Yes	Yes

\* Hilti is a registered trademark of Hilti Corporation

### Factored Tension Loads Cracked Concrete

(2500 psi, 110°F, Rod ASTM A193 Grade B7)

■ PE1000+  
■ RE 500-SD



### Factored Shear Loads Cracked Concrete

(2500 psi, 110°F, Rod ASTM A193 Grade B7)

■ PE1000+  
■ RE 500-SD

