

## PURE110+™ VS. HILTI\* RE 500-SD

### Product Comparison

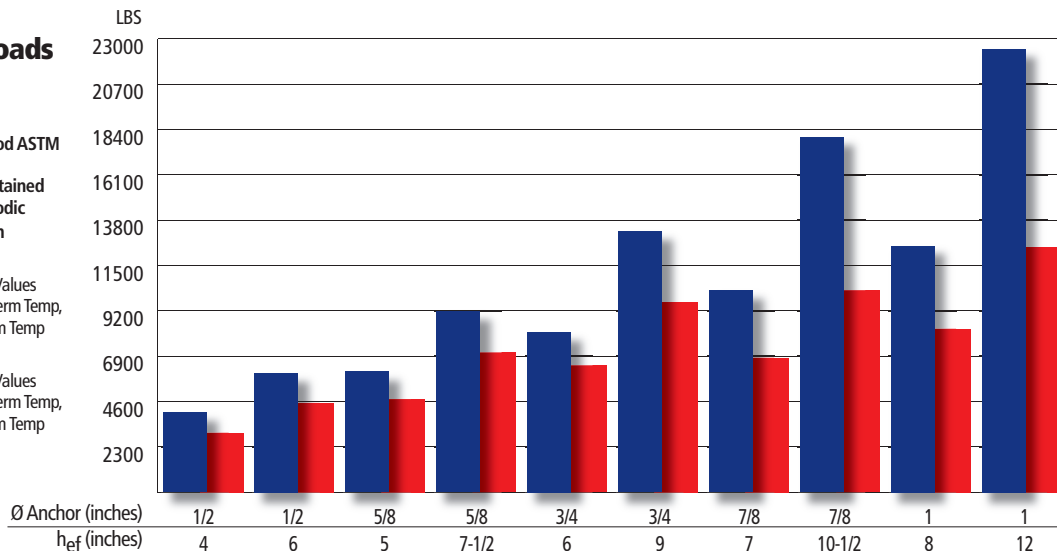
Product Name	Pure110+	RE 500-SD
Company	Powers Fasteners	Hilti*
Description	Epoxy Anchoring System	Epoxy Anchoring System
Size Range (inch)	(3/8, 1/2, 5/8, 3/4, 7/8, 1, 1-1/4) #3, #4, #5, #6, #7, #8, #9, #10	(3/8, 1/2, 5/8, 3/4, 7/8, 1, 1-1/4) #3, #4, #5, #6, #7, #8, #9, #10
ICC-ES (concrete)	ESR-3298	ESR-2322
Revised	2015 Jan	2015 Jan
Cracked Concrete	Yes	Yes
Seismic Approval in Concrete	Yes	Yes
LEED	Yes	Yes
VOC	Yes	Yes
NSF 61 (potable drinking water)	Yes	Yes

\* Hilti is a registered trademark of Hilti Corporation

### Factored Tension Loads Cracked Concrete

2500 psi NWC, Rod ASTM A193 Grade B7  
Dry concrete, sustained loading and periodic special inspection

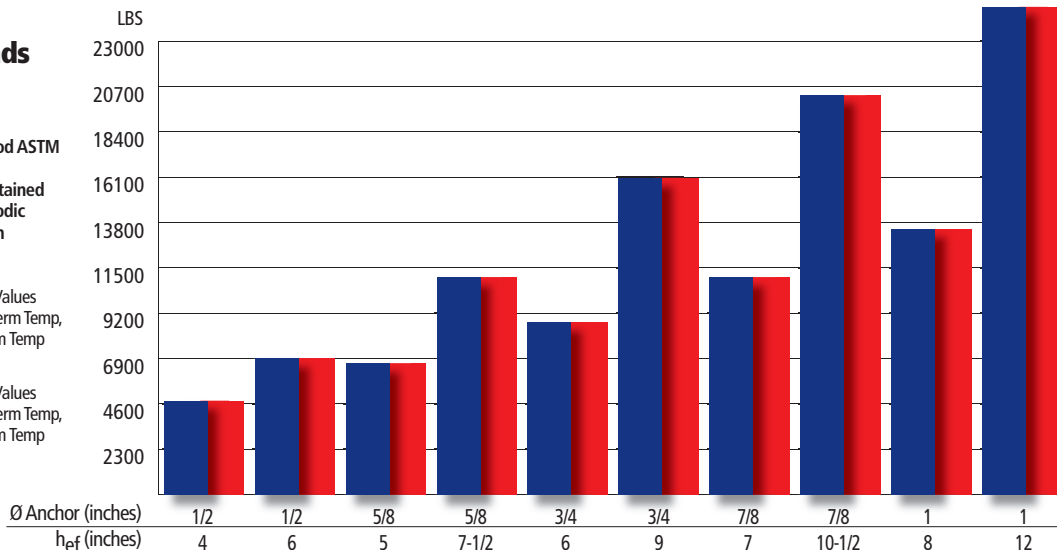
■ Pure110+ Bond Strength Values at 110°F Long-term Temp, 140°F Short-term Temp  
■ RE 500-SD Bond Strength Values at 110°F Long-term Temp, 130°F Short-term Temp



### Factored Shear Loads Cracked Concrete

2500 psi NWC, Rod ASTM A193 Grade B7  
Dry concrete, sustained loading and periodic special inspection

■ Pure110+ Bond Strength Values at 110°F Long-term Temp, 140°F Short-term Temp  
■ RE 500-SD Bond Strength Values at 110°F Long-term Temp, 130°F Short-term Temp



## PURE110+™ VS. SIMPSON\* SET-XP®

### Product Comparison

Product Name	Pure110+	SET-XP
Company	Powers Fasteners	Simpson*
Description	Epoxy Anchoring System	Adhesive Anchoring System
Size Range (inch)	(3/8, 1/2, 5/8, 3/4, 7/8, 1, 1-1/4) #3, #4, #5, #6, #7, #8, #9, #10	(3/8, 1/2, 5/8, 3/4, 7/8, 1, 1-1/4) #3, #4, #5, #6, #7, #8, #10
ICC-ES (concrete)	ESR-3298	ESR-2508
Revision Date	2015 Jan	2015 Jan
Cracked Concrete	Yes	Yes
Seismic Approval in Concrete	Yes	Yes
LEED	Yes	Yes
VOC	Yes	Yes
NSF 61 (potable drinking water)	Yes	Yes

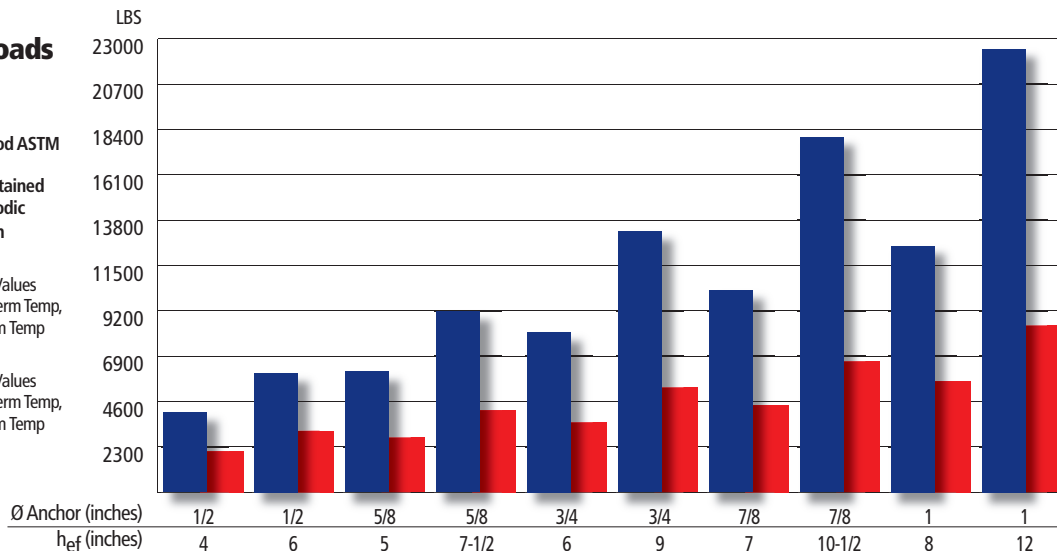
\*SET-XP and Simpson are registered trademarks of Simpson Strong-Tie Company Inc.

### Factored Tension Loads Cracked Concrete

2500 psi NWC, Rod ASTM A193 Grade B7  
Dry concrete, sustained loading and periodic special inspection

■ Pure110+  
Bond Strength Values at 110°F Long-term Temp, 162°F Short-term Temp

■ SET-XP  
Bond Strength Values at 110°F Long-term Temp, 150°F Short-term Temp

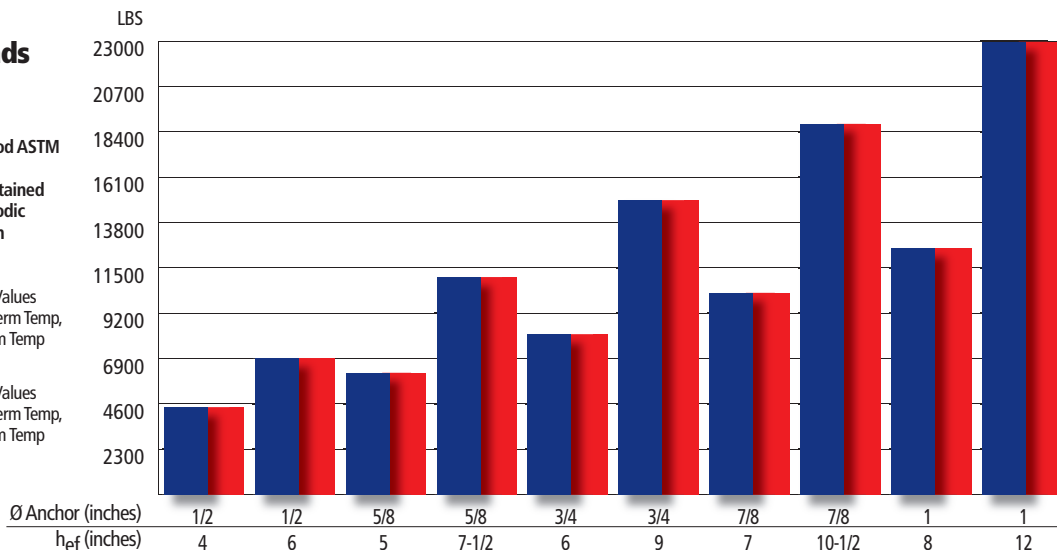


### Factored Shear Loads Cracked Concrete

2500 psi NWC, Rod ASTM A193 Grade B7  
Dry concrete, sustained loading and periodic special inspection

■ Pure110+  
Bond Strength Values at 110°F Long-term Temp, 162°F Short-term Temp

■ SET-XP  
Bond Strength Values at 110°F Long-term Temp, 150°F Short-term Temp



## PURE110+™ VS. HILTI\* HIT-HY 200

### Product Comparison

Product Name	Pure110+	HIT-HY 200
Company	Powers Fasteners	Hilti*
Description	Epoxy Anchoring System	Epoxy Anchoring System
Size Range (inch)	3/8, 1/2, 5/8, 3/4, 7/8, 1, 1-1/4 / #3, #4, #5, #6, #7, #8, #9, #10	3/8, 1/2, 5/8, 3/4, 7/8, 1, 1-1/4 / #3, #4, #5, #6, #7, #8, #9, #10
ICC-ES ESR (concrete)	ESR-3298	ESR-3187
Revision Date	2015 Jan	2015 Jan
Cracked Concrete	Yes	Yes
Seismic Approval in Concrete	Yes	Yes
Rebar Approval	Yes	Yes
LEED	Yes	Yes
VOC	Yes	Yes
Air Quality	Yes	Yes
NSF 61 (potable drinking water)	Yes	Yes
2010 FBC	Yes	Yes

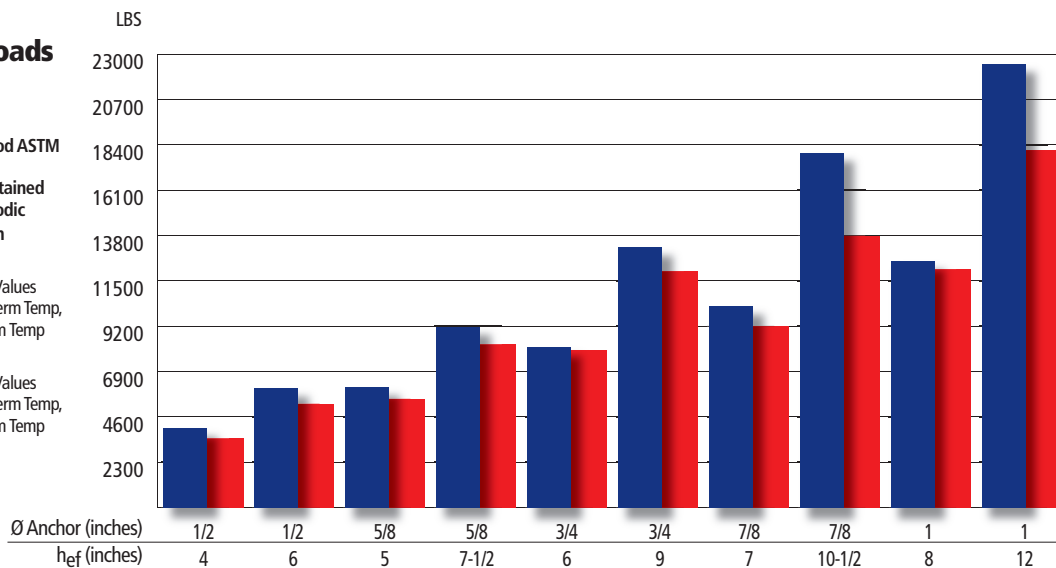
\* Hilti is a registered trademark of Hilti Corporation

### Factored Tension Loads Cracked Concrete

2500 psi NWC, Rod ASTM A193 Grade B7  
Dry concrete, sustained loading and periodic special inspection

■ Pure110+  
Bond Strength Values at 110°F Long-term Temp, 162°F Short-term Temp

■ HIT-HY 200  
Bond Strength Values at 110°F Long-term Temp, 176°F Short-term Temp

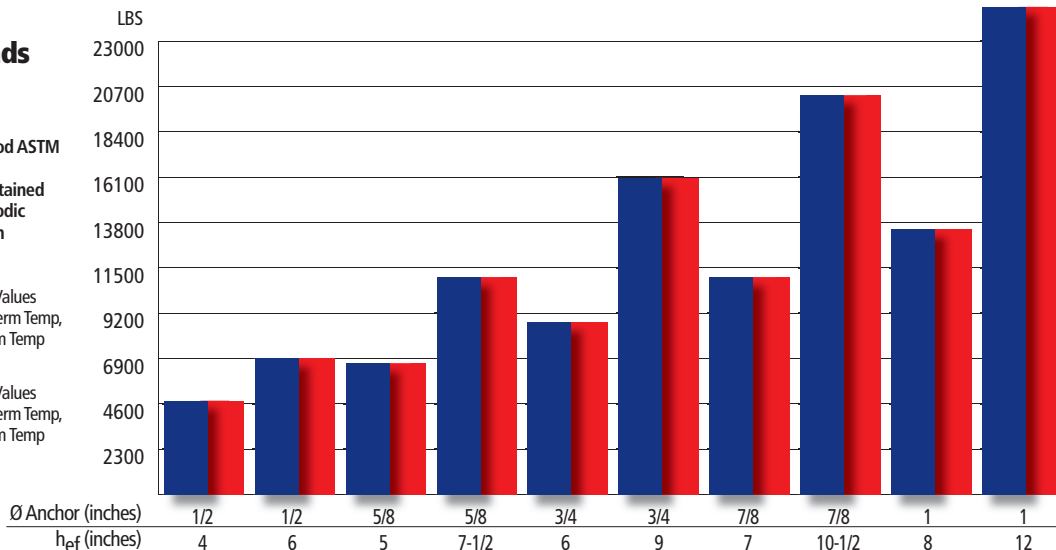


### Factored Shear Loads Cracked Concrete

2500 psi NWC, Rod ASTM A193 Grade B7  
Dry concrete, sustained loading and periodic special inspection

■ Pure110+  
Bond Strength Values at 110°F Long-term Temp, 162°F Short-term Temp

■ HIT-HY 200  
Bond Strength Values at 110°F Long-term Temp, 176°F Short-term Temp



## PURE110+™ VS. ITW RED HEAD® C6+

### Product Comparison

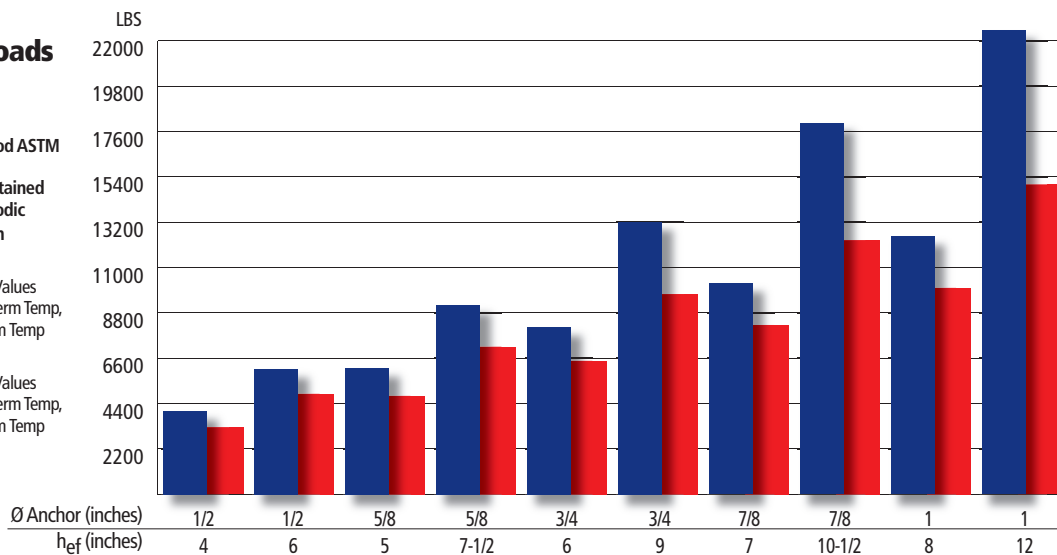
Product Name	Pure110+	Epcon C6+
Company	Powers Fasteners	ITW Red Head*
Description	Epoxy Anchoring System	Epoxy Anchoring System
Size Range (inch)	(3/8, 1/2, 5/8, 3/4, 7/8, 1, 1-1/4) #3, #4, #5, #6, #7, #8, #9 #10	(3/8, 1/2, 5/8, 3/4, 7/8, 1, 1-1/4) #3, #4, #5, #6, #7, #8, #10
ICC-ES (concrete)	ESR-3298	ESR-3577
Revised	2015 Jan	2015 Jan
Cracked Concrete	Yes	Yes
Seismic Approval in Concrete	Yes	Yes
Rebar Approval	Yes	Yes
LEED	Yes	Yes
VOC	Yes	Yes
NSF 61 (potable drinking water)	Yes	Yes

\* ITW Red Head is a registered trademark of Illinois Tool Works, Inc.

### Factored Tension Loads Cracked Concrete

2500 psi NWC, Rod ASTM A193 Grade B7  
Dry concrete, sustained loading and periodic special inspection

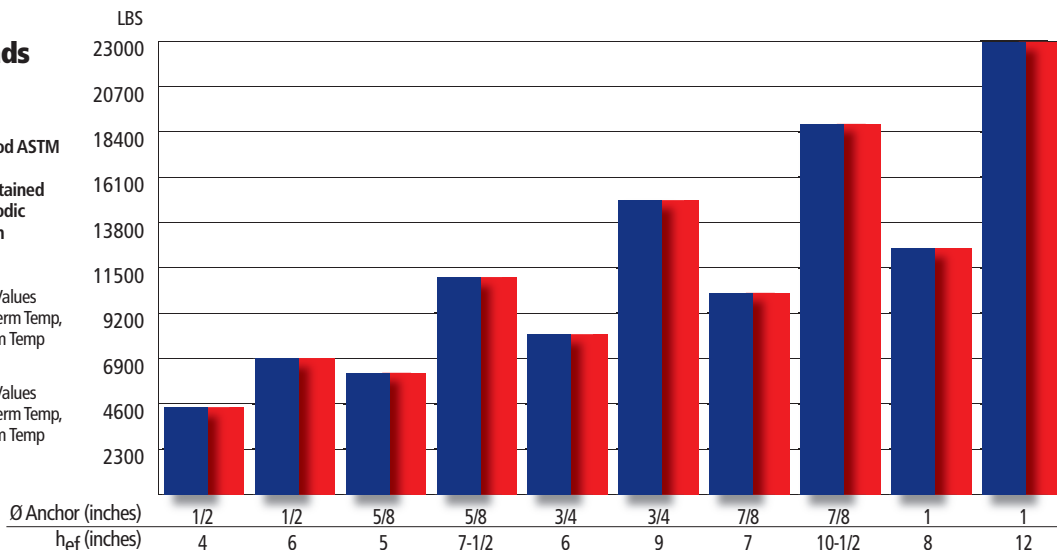
■ Pure110+ Bond Strength Values at 110°F Long-term Temp, 140°F Short-term Temp  
■ C6+ Bond Strength Values at 110°F Long-term Temp, 130°F Short-term Temp



### Factored Shear Loads Cracked Concrete

2500 psi NWC, Rod ASTM A193 Grade B7  
Dry concrete, sustained loading and periodic special inspection

■ Pure110+ Bond Strength Values at 110°F Long-term Temp, 140°F Short-term Temp  
■ C6+ Bond Strength Values at 110°F Long-term Temp, 130°F Short-term Temp



## PURE110+™ VS. ITW RED HEAD® G5

### Product Comparison

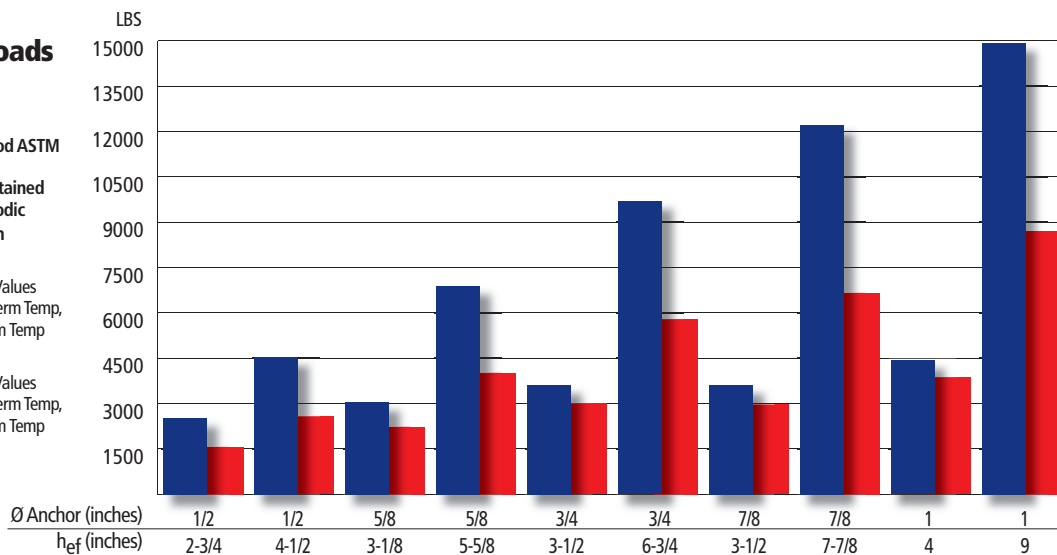
Product Name	Pure110+	Epcon G5
Company	Powers Fasteners	ITW Red Head*
Description	Epoxy Anchoring System	Adhesive Anchoring System
Size Range (inch)	(3/8, 1/2, 5/8, 3/4, 7/8, 1, 1-1/4) #3, #4, #5, #6, #7, #8, #9 #10	(3/8, 1/2, 5/8, 3/4, 7/8, 1, 1-1/4) #3, #4, #5, #6, #7, #8, #10
Maximum Embedment (inches)	20 anchor diameters	9 anchor diameters
ICC-ES (concrete)	ESR-3298	ESR-1137
Revision Date	2015 Jan	2015 Jan
Cracked Concrete	Yes	Yes
Seismic Approval in Concrete	Yes	Yes
Rebar Approval	Yes	Yes
LEED	Yes	Yes
VOC	Yes	Yes
NSF 61 (potable drinking water)	Yes	Yes

\* ITW Red Head is a registered trademark of Illinois Tool Works, Inc.

### Factored Tension Loads Cracked Concrete

2500 psi NWC, Rod ASTM A193 Grade B7  
Dry concrete, sustained loading and periodic special inspection

■ Pure110+ Bond Strength Values at 110°F Long-term Temp, 140°F Short-term Temp  
■ G5 Bond Strength Values at 110°F Long-term Temp, 130°F Short-term Temp



### Factored Shear Loads Cracked Concrete

2500 psi NWC, Rod ASTM A193 Grade B7  
Dry concrete, sustained loading and periodic special inspection

■ Pure110+ Bond Strength Values at 110°F Long-term Temp, 140°F Short-term Temp  
■ G5 Bond Strength Values at 110°F Long-term Temp, 130°F Short-term Temp

