

Commercial Cement Plaster (CCP)



dryvit® 

DS247

Dryvit Commercial Cement Plaster (CCP) – a single source solution combining the best of old and new world technology

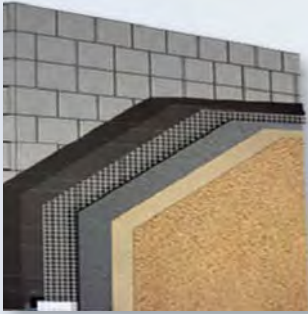
In one form or another, 'stucco' has been used for centuries. Hard and durable, it has been textured, tinted or coated to provide a colorful, attractive and cost effective exterior. As a render over masonry or with a weather-resistive barrier and lath, stucco is a preferred cladding choice for many architects and builders.

Dryvit offers a new dimension to an 'old' solution by providing a variety of stucco assemblies suited to the architect's need for both performance and aesthetics. Using the latest in 21st century chemistry, Dryvit CCP options can include superior air and weather-barrier performance, as well as aesthetic variety through a multitude of flexible, high performance finish options.

Dryvit CCP – proven, reliable, creative – building on the past with the future in mind.



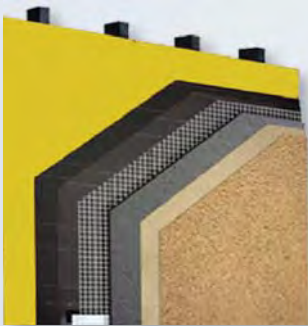
Commercial Cement Plaster Options



CCP 1

- Masonry
- Weather-Resistive Barrier (optional)
- Metal Lath (optional)
- Scratch & Brown Coat
- Primer
- Coating or Finish

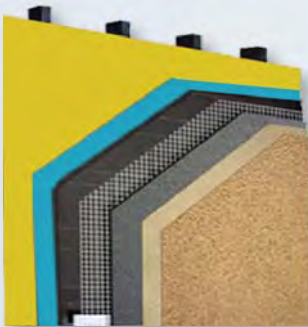
A basic render or stucco assembly for concrete or CMU only – applied directly or over approved water resistive barrier and metal lath. Dryvit supplied components are CCP Base, primer, and finish/coating.



CCP 2

- Sheathing
- Weather-Resistive Barrier
- Metal Lath
- Scratch & Brown Coat
- Primer
- Coating or Finish

CCP 2 offers a traditional stucco assembly, and is used on wood or steel frame construction with a Dryvit approved sheathing. Code approved water resistive barrier and lath are required. Dryvit components are CCP Base, primer, and finish/coating.



CCP 3

- Sheathing or Masonry
- Liquid-Applied Air/Moisture Barrier
- Slip Sheet
- Metal Lath
- Scratch & Brown Coat
- Primer
- Coating or Finish

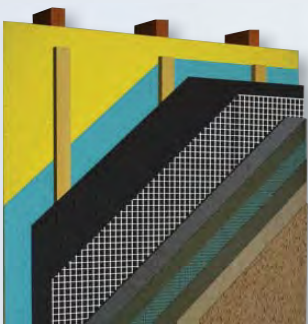
CCP 3 enhances Option 2, with the application of Backstop® NT and AquaFlash® over the sheathing and rough openings prior to the installation of paper backed lath. This option is used over wood or steel frame construction and a Dryvit approved sheathing, when an air barrier is called for in the project specification. Dryvit supplied materials here are Backstop NT, AquaFlash, CCP Base, primer, and finish/coating.



CCP 4

- Sheathing or Masonry
- Liquid-Applied Air/Moisture Barrier
- Slip Sheet
- Metal Lath
- Scratch & Brown Coat
- Reinforced Base Coat
- Primer
- Coating or Finish

CCP 4 is an option that can be used to enhance any of the previous configurations shown. It adds the performance of Dryvit fiberglass reinforcing mesh and Genesis® leveling coat to the surface of the stucco, prior to application of primer and finish/coating. This improves surface moisture resistance as well as the aesthetic appearance of the stucco. If this option is selected, Dryvit fiberglass mesh (Standard™, Standard Plus™, or Intermediate™) and Genesis are added to the material needed to complete the cladding.



CCP 5

- Sheathing
- Liquid-Applied Air/Moisture Barrier
- Furring Strips
- Breather/Backer Board
- Weather-Resistive Barrier
- Metal Lath
- Scratch & Brown Coat
- Reinforced Base Coat
- Primer
- Coating or Finish

This system is also known as a “strapped” system, and is intended for use on projects where a cavity backed, rainscreen design is specified. CCP 5 utilizes a double sheathing and weather-resistive barrier, with furring strips between the sheathing layers to produce a ventilated cavity, over which the steps in CCP 3 and 4 are followed.

General Design Guidelines

As with any cladding, stucco must be designed and installed properly in order to perform as intended. Some cracking is inevitable with any stucco, and moisture will penetrate through the cracks. When designed and installed properly over lath, this moisture settles on the external surface of the Code required weather-resistive barrier and ultimately, via gravity, drains down and out of the wall via a weep screed. Dryvit recommends that all applicable Codes be followed, ASTM guidelines maintained, and that all work is performed by a contractor familiar with these as well as the installation of stucco. Trade plastering associations exist in many parts of the US where stucco is popular, including Florida (Florida Wall and Ceiling Contractors' Association), the Southwest (Western Wall and Ceiling Contractors' Association), and Northwest (Northwest Wall and Ceiling Contractors' Association). These are excellent references and sources of information for regional nuances to stucco design and use, as well as contractors qualified to perform this type of work. Dryvit's Technical Services Department can provide more information on these upon request.



Warranty

Every Dryvit product uses superior raw materials and is formulated for optimum performance. Specification is determined by the Architect and his/her consideration of project performance requirements and applicable building Codes.

All Dryvit CCP products are warranted against manufacturer's defect for ten years. The terms and conditions of this warranty are clearly outlined and a sample is available upon request. No warranty whatsoever is made with respect to cracking.

Dryvit does not warrant nor shall it be responsible in any circumstances for defective or improper workmanship by the applicator with any CCP option.